

Franklin County Holstein show

(Continued from Page 15)
pion female and reserve grand champion female.

Ni-Crete's 2 year old was second best udder of the show, and their groups won the senior get of sire, best three females, dairy herd, and dam and daughter classes.

Judging the show was Mrs. Genie Francisco from Andover, N.J. More than 160 animals were entered.

Following are detailed placings of the open classes:

Junior Calf
1. Rowe-Spring Farm, 2. Aldean Crider, Chambersburg; 3. Lisa Gsell, Chambersburg; 4. Douglas Fahrney, Waynesboro; 5. Donna Cashell, Chambersburg; 6. Lori Gsell, 7. Trudi Christman, Chambersburg; 8. Marvin Zimmerman, Chambersburg; 9. Brenton Upperman, Chambersburg; 10. Ivan Meyers, Greencastle; 11.

Jesse Reichard, Waynesboro; 12. Brian Brake, Mercersburg.

Intermediate Calf
1. Rowe-Spring Farm, 2. Robert Mellott, Mercersburg; 3. Michael Cordell, Chambersburg; 4. Reich-dale Farm, Chambersburg; 5. Maryanne Johnson, Mercersburg; 6. Ginger Secrist, Fayetteville; 7. Timothy Donough, Chambersburg; 8. Shady Laun Farm, Chambersburg; 9. Rowe-Spring Farm, 10.

Leslie Fahrney, Waynesboro; 11. Wit-Lane Farms, Mercersburg; 12. Jan Horst, Chambersburg.

Senior Calf

1. Rowe-Spring Farm, 2. Wayne Helman, Chambersburg; 3. Rodney Crider, Chambersburg; 4. Ginger Secrist, 5. Debra Stuff, Mercersburg; 6. Clyde Miller, Chambersburg; 7. Meadow-Vu Farm, Mercersburg; 8. Cordell Brothers, Mercersburg; 9. Rhonda Fahrney, 10. Keven Mummau, Shippensburg.

Junior Yearling

1. Deborah Cashell, 2. Rodney Meyers, 3. Ginger Secrist, 4. Craig Woodring, Chambersburg; 5. Paul Cashell, 6. Wayne Helman, 7. Nancy Brake, Mercersburg.

Senior Yearling

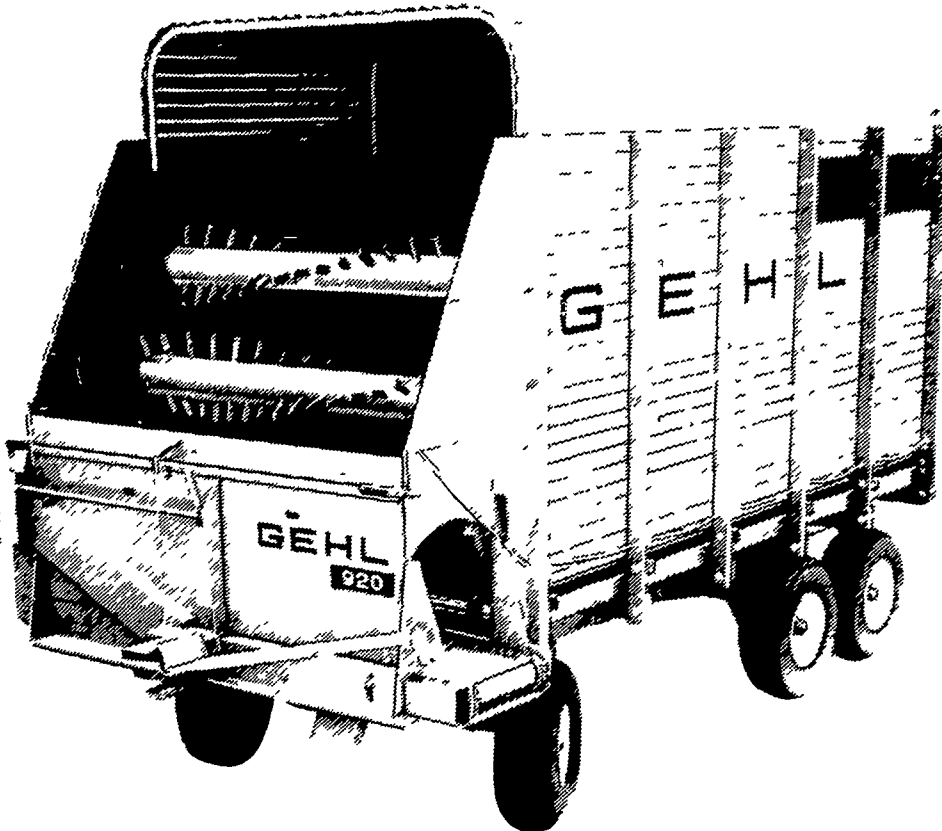
1. Ni-Crete Farm, 2. Randall Christman, Chambersburg; 3. Meadow-Vu Farm, 4. Steve Eckstine, Mercersburg; 5. Gaymere Farms, Waynesboro; 6. Lockway Farms, 7. Kirk Christman, Chambersburg; 8. Mark Stoner, Mer-

(Continued on Page 34)



Ni-Crete Barbara R Citation, grand champion female, and best udder of show, for the second year in a row at the Franklin County Holstein Show. The event drew more than 160 entries and was sponsored by the Franklin County Federation of Sportsmen and the Franklin County Holstein Club.

THE LEADER IN SELF-UNLOADING BOXES



WE HAVE YOUR SIZE, EQUIPPED THE WAY YOU WANT IT, IN STOCK
GOOD TRADE IN ALLOWANCES

CALL US NOW

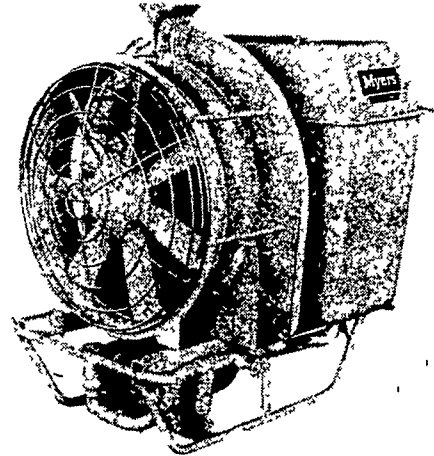
BINKLEY & HURST BROS.

133 Rothsville Station Rd. Lititz, PA 17543
Phone (717) 626-4705



Myers A32TMG

ORCHARDS • ROW CROPS
TURF • VINEYARDS
... with Lightweight, Rust Free Molded Tank



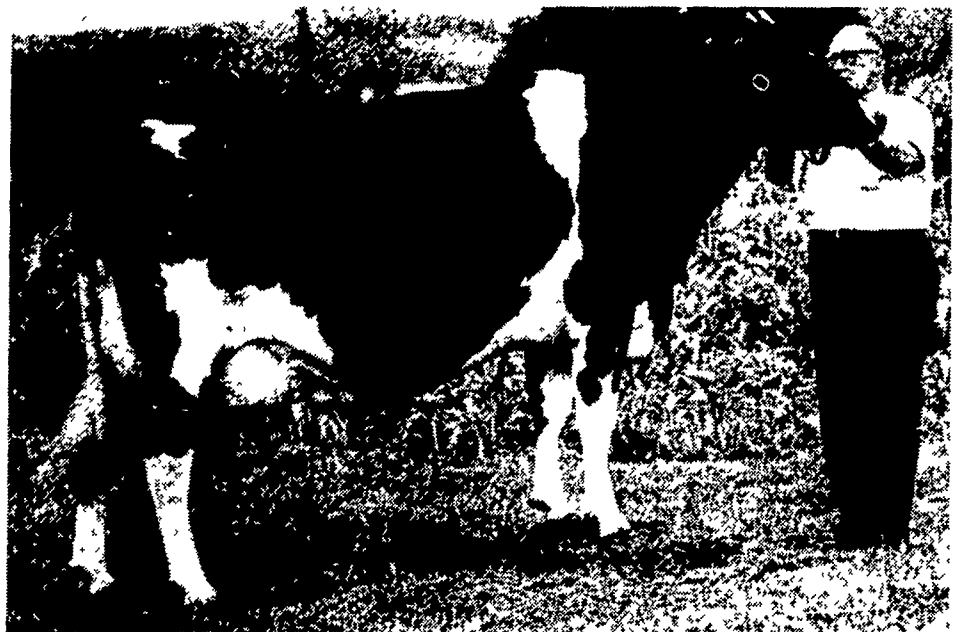
- Compact, 3 point Hitch PTO Air Sprayer
- Multi-purpose chemical applicator for Parks, Golf Courses, General Farming, Orchards and Vineyards
- Multi-use Design Cuts Cost in Half
- Big Piston Pump offers Full Range from 20 to 500 P.S.I. and 12 GPM

LESTER A. SINGER

RONKS, PA PHONE (717) 687-6712
Lancaster County's Only Dealer
Specializing in Sprayer Sales & Service

RED HOT

29H2775 Hanover-Hill Triple Threat-Red R1629391 VG-87



Dam: Tara-Hills Pride Lucky Barb 6681758 EX-94 2E
4y 3m 2x 305d 18,370M 4.2% 771BF
Sire: Roybrook Telstar 0288790C EX-Extra

TRIPLE THREAT.....TRIPLE PLUS!

USDA, 5-77 Rpt. 63%
44D., 34H. 16,454M 3.9% 637BF
PD +\$77 +\$46M +.09% +37BF
HFA, Vol. 2 1977 Rpt. 46%
11 Classified Dtrs. Age Adj. Score 84.6 PDT +0.70

TRIPLE THREAT'S proof and Pedigree tell it all. This TRIPLE PLUS RED BULL is available on a regular basis from your Professional American Breeders Service Representative.

Congratulations to Paul B. Zimmerman, Ephrata, Pa.
Owner of Chrome-View R Maple Lynn 8334323 EX-90

3y 09m 2x 305d 20,705M 3.9% 800BF
334d 21,984M 855BF

Sired by: 29H1883 Citation R Maple 1430145 EX-92 GM



Bangor, PA
Ephrata, PA
Gap, PA
Holtwood, PA
Landisville, PA
Manheim, PA
Port Murray, NJ
Reading, PA
Richland, PA
Shippensburg, PA
Thomasville, NJ
Vincentown, NJ
West Grove, PA

Eric Heinsohn
Darvin Yoder
Lynn Gardner
Paul Herr
James Charles
Lamar Witmer
Robert Kayhart
Robert Greider
Paul Martin
Jerry Babonis
Ira Boyer
Gerald Hall
Maurice Stump

215-588-4704
717-733-0966
717-656-6509
717-284-4592
717-898-8694
717-898-8694
201-689-2605
215-378-1212
717-866-4228
717-532-3711
717-225-3758
609-859-3783
215-869-9187

