

Chester County DHIA

[Continued from Page 44]

Herman Stoltzfus B8	52.5	76.3	48.0	3.5	1.70
Paul King 3	85.5	86.3	43.0	3.9	1.67
Elmer A. Mast B8	66.4	91.4	41.2	4.0	1.66
John H. Lamb B3	45.5	81.3	43.9	3.8	1.66
J. Raymond Harnish B8	79.2	81.5	40.1	4.1	1.66
John E. Bruner B3	46.6	86.9	43.6	3.8	1.66
David Walton B3	46.0	89.4	46.0	3.6	1.65
Henry S. King B3	47.0	89.5	42.7	3.9	1.65
David Bartram G3	90.7	88.3	41.6	3.9	1.64
Merle J. King B8	75.9	86.6	43.0	3.8	1.64
Leon D. Kurtz 3	31.0	86.1	47.2	3.5	1.63
Mast Stoltzfus B3	52.6	88.0	43.5	3.7	1.63
Gideon Stoltzfus, Jr. B3	42.6	93.0	44.7	3.6	1.63
Leon D. Kurtz 3	30.6	89.2	48.8	3.3	1.62
Charles H. Gable 1	51.9	88.0	38.5	4.2	1.62
J. Elmer Lapp 3	30.2	85.8	41.9	3.9	1.62

Kulp Brothers G3	90.0	86.2	41.5	3.9	1.60
David Windle B3	46.0	83.9	49.9	3.2	1.60
William P. Moore B3	147.3	80.8	42.3	3.8	1.59
Landis S. Reid B3	63.2	87.2	47.9	3.3	1.59
George Steele & Sons B3	70.2	93.0	43.1	3.7	1.59
Harry L. Griest G3	53.6	93.4	40.7	3.9	1.58
Harvey C. Waltz B8	86.8	90.3	39.9	4.0	1.58
Lester Eby B3	60.0	84.0	42.4	3.7	1.58
Gottlieb Strohmaier B8	79.1	90.2	43.7	3.6	1.58
Dean Roland B8	80.2	85.4	44.1	3.6	1.57
Daniel S. Stoltzfus B3	39.3	97.3	39.3	4.0	1.56
Wilmer L. Hostetter B3	44.1	89.2	41.0	3.8	1.55
Paul M. Snader B8	26.0	83.7	41.3	3.8	1.55
Jonas E. Stoltzfus 3	32.0	88.4	42.3	3.6	1.54
Kimberton Fm. School, Inc. 2	62.2	82.0	34.7	4.4	1.54
William E. Parry & Son B3	219.9	86.6	40.9	3.8	1.54
W.B. Dixon Strowd G3	111.3	86.5	41.1	3.7	1.54
Floyd Miller G3	51.0	88.0	41.7	3.7	1.54
Llanduey Farm B8	114.8	85.2	43.4	3.5	1.54

Eugenia C. Madeira 2	46.2	88.3	33.7	4.5	1.53
Daniel Z. Stoltzfus B3	45.8	89.9	42.1	3.6	1.53
E. Kent High G8	123.0	92.1	40.2	3.8	1.52
John R. Groff G8	42.1	93.4	41.9	3.6	1.52
S.R.T.M.J. Matthews B3	25.7	82.6	42.6	3.6	1.52

[Continued on Page 47]

HART - THE NEW WHEAT

Hart Wheat is a new variety, a high yielder, and a medium early type. It has very good straw, medium short in length and is a bearded wheat. The 1977 crop had a high test weight per bushel and averaged a 15 per cent increase in yield over Redcoat Wheat. Hart can be combined a few days ahead of Redcoat and is moderately resistant to Hessian Fly. Hart responds to fertilizer and management much like Redcoat. It is a wheat that you should check out.

Save with REIST'S SEEDS.

REIST SEED COMPANY

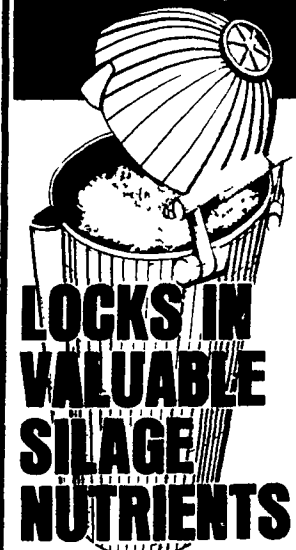
Finest Quality Seeds (Since 1925)
Mount Joy, PA Ph: 717-653-4121

Tax Tips

An estimated 67.8 million people paid about \$32.3 billion more than they had to on their income taxes in 1975. One way to stay out of such statistics is to take all the deductions you're entitled to and can prove.

SILO-BEST

inoculum & enzyme preservative



LOCKS IN VALUABLE SILAGE NUTRIENTS

- Legume Silage
- Grass Silage
- Corn Silage

University tested and farm proven SILO-BEST enzyme preservative helps save more valuable nutrients in your silage — gives you a better return on your land and labor. Just apply at the rate of 1 lb per ton when you chop or ensile. Completely safe, non caustic.

- Saves vitamins & other nutrients
- Improves palatability, digestibility
- Helps reduce oxidation

SILO-BEST

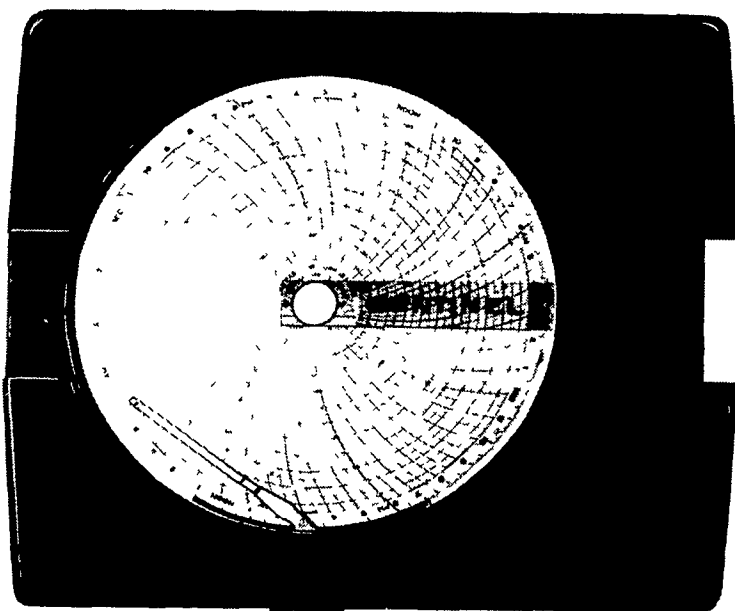
AVAILABLE NOW at

AARON S. GROFF & SON

FARM & DAIRY STORE

RD3, Ephrata, PA
17522 (Hinkletown)
Phone (717) 354 4631
Store Hrs. 7 AM to 9 PM
Closed Tues., Wed & Sat at 5:30 PM

THE SENTINEL



Round-the-clock guardian of stored milk temperature

If you depend upon your milk check for a living, protect that income by insuring milk quality.

The least expensive, single-payment insurance obtainable is the Sentinel — the heavy-duty, 10-inch recorder which charts round-the-clock temperature of your milk-cooling or holding tank.

Assure yourself — and your processor — that proper milk temperature is always maintained.

Keep a permanent log of compressor operation and tank cooling or pre-cooling efficiency, from first filling to pickup.

Cleaning temperatures — increasingly questioned by sanitarians — are recorded on the same chart.

At little added cost, the Sentinel is available with provision for actuating an alarm or warning light if milk holding temperature rises above pre-set level.

Remember — if it prevents the loss of only one tank of milk, the Sentinel has paid its own way.



See your dealer about the Sentinel — or drop us a line

P.O. Box 433
Elizabethtown, PA 17022

