

Hog Markets

Lancaster Market

Monday, August 29, 1977
 HOGS: Barrows and Gilts 1.00-1.50 lower.
BARROWS AND GILTS:
 US 1-2 200-240 lbs. 46.00-46.35; few US 1 210-240 lbs. 47.00-47.25; US 1-3 200-250 lbs. 45.50-46.00; US 2-4 255-270 lbs. 43.50-45.10.

New Holland Feeder Pig

New Holland, Pa.
 Wednesday August 31, 1977
Feeder Pigs
 Today 756
 Last Wednesday 784
TREND: Compared to last Wednesday feeder pigs steady to 5.00 lower. All prices on a per hundred weight basis.
 US 1-2 25-40 lbs. 98.00-113.00; 40-50 lbs. 88.00-100.00; 50-60 lbs. 79.00-83.00; 65-100 lbs. 53.50-69.00.
 US 2-3 30-50 lbs. 91.00-99.00; 35 head 20-25 lbs. 100.00-104.00; 35 head 32 lbs. 116.00; 50-70 lbs. 70.00-92.00.

Lancaster Auction

Lancaster, Pa.
 Wednesday, August 31, 1977
HOGS: Barrow and Gilts 1.50-2.00 lower.
BARROWS AND GILTS:
 US 1-2 200-240 lbs. 44.00-44.60; US 1 210-240 lbs. 45.25-45.50; US 1-3 200-250 lbs. 43.50-44.00.

St. Louis Hog Market

Thursday, September 1, 1977
HOGS: 5000, moderate, 25-50 lower. US 1-2 200-240 lbs. 43.75-44.00. US 1-3 200-250 lbs. 43.50-43.75.
Sows: uneven, weights under 450 lbs. mostly 1.00 lower; over 450 lbs. firm to 25 higher US 1-3 300-450 lbs. 37.00 to mostly 37.50; over 450 lbs. 38.25-38.75.

Indianapolis

Thursday, September 1, 1977
HOGS: 1500, active, 25 instances 50 higher. US 1-3 200-250 lbs. 44.00-44.50, many 44.25-44.50.

SOWS: moderately active, steady instances 25 higher.
 US 1-3 300-450 lbs. 37.50-39.00; 450-600 lbs. 39.00-39.50.

Peoria Hog Auction

Thursday, September 1, 1977
HOGS: 3000, active, opening 25-50 higher. US 1-2 200-240 lbs. 44.00-44.25, about 320 haed 44.50, 1-3 200-250 lbs. 43.50-44.00.
SOWS: 50 higher. US 1-3 350-500 lbs. 38.50-39.00; 500-600 lbs. 39.00-39.50, one small lot 40.00.

New Holland Hog

New Holland, Pa.
 Monday, August 29, 1977
Hog Auction
 Today 1761
 Last Monday 1427
Trend: Compared to last Monday barrows and gilts 25-75 lower, instances 1.00 lower.
BARROWS AND GILTS:
 US 1-2 200-240 lbs. 47.85-48.60; US 1-3 200-240 lbs. 46.75-47.60; US 2-3 210-255 lbs. 46.00-46.50; few 200-210 lbs. 45.60-46.00; one lot US 3-4 265 lbs. 43.75.

Vintage Hog

Saturday, August 27
 Reported 600 head.
 No. 1 210-240 lbs. 47.75-48.50; No. 2-3 210-240 lbs. 46.25-47.75; 1 batch straights 49.00; sows 35.00-37.00; boars 28.00-32.00; lightweights 140-180 lbs. 36.00-42.00.
 Wednesday, August 31
 Reported 616 head.
 No. 1 210-240 lbs. 44.50-45.60; No. 2-3 43.25-44.50; sows 34.75-36.25; boars 29.50; Lightweights 140-175 lbs. 37.75-40.25.

Lancaster Feeder Pig

Lancaster, Pa.
 Tuesday, August 30, 1977
Feeder Pigs
 Today 1342
 Two Weeks Ago 1714
TREND: Compared to two weeks ago US 1-2 steady to 3.00 lower, US 2-3 steady to 3.00 higher. All prices on per hundred basis.
 US 1-2 100 head 30-36 lbs. 100.00-112.00; 40-50 lbs. 88.00-98.00; 50-55 lbs. 80.50-88.00.
 100 head reputation 53-54 lbs. 93.50-96.00; couple lots 60-65 lbs. 70.00-75.00; one lot 86 lbs. 58.00.
 US 2-3 28-40 lbs. 95.00-106.50; 40-50 lbs. 88.00-98.00; 46 head 51-56 lbs. 80.00-81.00; few 58-66 lbs. 70.00-73.50.
 Utility 100 head 25-50 lbs. 52.50-70.00

Western Md. Feeder Pigs

Western Maryland Stockyards
 August 26, 1977
 Total 1217 Pigs
Prices Strong Demand!
 Light Pigs \$4.00 to \$8.00 Higher; some as much as \$10.00 Higher. Heavier pigs \$3.00 to \$5.00 Higher.
 No. 1 Pigs: 20-39 lbs. 95.00-107.00; 40-49 lbs. 94.00-103.00; 50-69 lbs. 71.00-82.00.
 No. 2 Pigs: 20-29 lbs. 91.00-113.00; 30-39 lbs. 91.00-108.00; 40-49 lbs. 90.00-105.00; 50-59 lbs. 78.00-90.00; 60-60 lbs. 76.00-81.00; 70-89 lbs. 60.00-72.00.
 No. 3 Pigs: 30-39 lbs. 89.00-105.00.

WE WILL HAUL HAY, STRAW, & GRAIN

To Local Auctions or Buy Outright
 Paid at Scales
MEADOW GREEN FARMS
 Call 717-933-4080 or 717-933-4377

Futures Trading

(Closing Bids as of Thursday, September 1)

	Chicago Cattle	Chicago Hogs	New York Maine Potatoes	Chicago Fresh Eggs
Sept.				57.65
Oct.	38.55	37.65		52.50
Nov.			4.30	56.75
Dec.	37.45	36.60		57.00
Jan.				
Feb.	37.05	33.95		
March			4.87	
April	37.25	31.60	5.35	
May				5.94
June				

Trend - Cattle are lower, Hogs are lower, Potatoes are steady, and eggs are lower.
 Market Provided by Commodity Department Reynolds Securities, Inc.

CHICAGO GRAIN FUTURES

Chicago Grain Futures

(Closing Bids as of Thursday, September 1)

	Corn	Wheat	Soybeans	Soybean Meal
Sept.	1.84	2.20½	5.32	145.20
Oct.				137.60
Nov.			5.20½	
Dec.	1.92¾	2.30¾		140.80
Jan.			5.27	142.40
March	2.01	2.38½	5.35	145.50
May	2.06	2.42½	5.40½	147.60

Trend - Corn is higher, Wheat is higher, Soybeans are higher, and Soybean Meal is higher.
 Market Provided by Commodity Department Reynolds Securities, Inc.

U.S. Inspected Livestock Slaughter

Estimated Daily Livestock Slaughter Under Federal Inspection

	CATTLE	HOGS	SHEEP
Week to Date	592,000	1,123,000	95,000
Same Period Last Week	597,000	1,105,000	91,000
Same Period Last Year	604,000	1,067,000	105,000

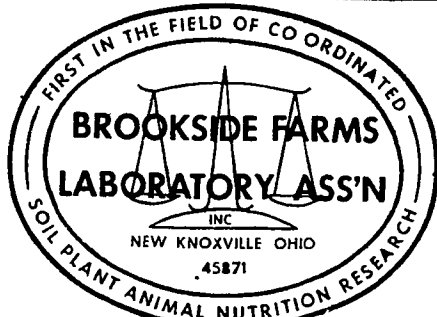
HAY, STRAW & CORN

-SALE-

Every Friday at 12 Noon.

Green Dragon Market & Auction

RD No. 4 Ephrata, Pa. 717-733-2334
 1 mile North of Ephrata on N. State St.

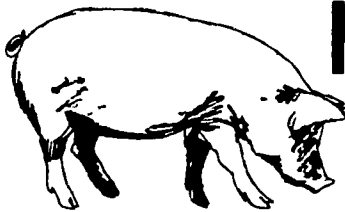


National Reputation - Local Service

CONTACT:
JOHN CAMPBELL
 Atglen, PA
 (215) 593-5529
GARY MCGEE
 Spring Run, PA
 (717) 349-2340
DAN DERR
 Conowingo, MD
 (301) 378-3280

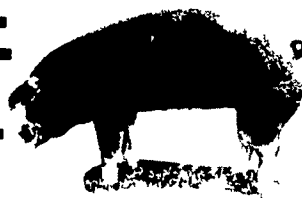
ATTENTION CATTLE FEEDERS

Do you want to make buying your stockers and feeders easy. It can be very simple. Just call and give us your order. All orders filled to your exact specifications. Call us anytime. We can be very helpful.



NEXT FEEDER PIG SALE

TUESDAY, SEPT. 13- 1 P.M.



Consign all your feeder pigs to Walter M. Dunlap & Sons where they will be handled by a capable and experienced staff.

Feeder pigs received from 6 A.M. to 11 A.M.

WALTER M. DUNLAP & SONS

LANCASTER STOCK YARDS

Consignors can get state tags at our office, thereby saving 25c marketing expense

For Further Information, Call 717-397-5136

J.M. HOOBER INC.

Serving You Since 1895

LANCASTER STOCK YARDS

Let us put your corn to work. At this time it makes good sense to turn corn into beef and pork. We at J.M. Hooper Inc. stand ready to assist you in the buying and marketing of all your livestock needs.

OUR BUSINESS IS MORE THAN LIVESTOCK
 OUR BUSINESS IS SERVICE TO YOU

Next Feeder Pig Sale - September 13, 1977

J.M. Hooper Steer Division
 Ph: (717) 397-6191, 569-2084

Please Call Us Soon

J.M. Hooper
 Hog, Calf & Sheep Division
 Ph: (717) 397-6191, 626-5659