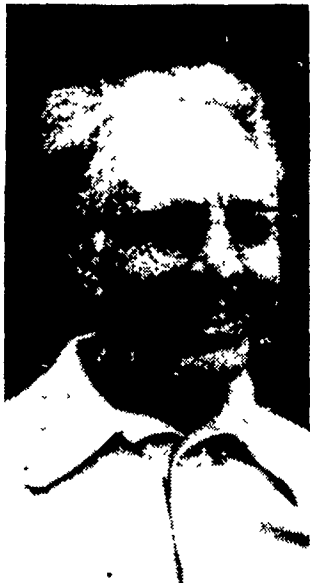


*Organic farming is a way of life*

# Proper manure usage implies storage

By DIETER KRIEG  
**EDITOR'S NOTE:** This is the fourth article in a continuing series on organic farming.  
**KIMBERTON** - The ideal system of organic farming is



Paul Keene

totally self sustaining. That is, it needs nothing for support other than the inputs which can be found within a given system.

Farmers in this part of Pennsylvania are already doing that to some extent,

but many potential routes towards the improvement of soil fertility are overlooked. In Europe, for example, farmers have been collecting the urine of their animals for years. An estimated 30 to 40 per cent of the fertilizing agents found in manure are present in the liquid portions.

Another concept which has been largely overlooked in this country, and yet has been in practice in Europe for centuries is the proper storage of manure rather than daily hauling to the field. Ideally, the manure should be composted first if the farmer wants to get the most use out of it.

Well composted manure stimulates the root system, and develops a richer soil.

According to Dr. Herbert Koepf, director of the School of Biodynamic Agriculture at Emerson College, England, a self-sustaining farming system can be brought about through diversification. He recommends that crop and livestock farming be combined into one, with each complimenting the other and that organic matter be recycled. It's a concept



Dr. Herbert Koepf

which is used rather widely in this part of Pennsylvania and neighboring areas, but not in complete harmony with the principles advocated by men such as Koepf.

A former professor at the University of Hohenheim in

Germany, Dr. Koepf visited southeastern Pennsylvania last week to deliver a talk on biodynamic agriculture. He spoke at the Kimberton Farm School, near here, which at one time specialized in training young men in the principles of organic farming. Although

the school still maintains its farms, teaching is now limited to conventional subject matter. Agriculture is no longer on the curriculum in any form.

Visitors to the talk and slide presentation last week were told that biodynamic agriculture is a new ap-

proach to farming which was put forth by Rudolf Steiner. It embraces the thought that "adherence to one-sided technological thinking and profit seeking has always led to ecological, economic and social disaster."

According to Koepf and his

[Continued on Page 29]

**CALL US FOR "ON-THE-SPOT" FARM TIRE SERVICE**

**IN—THE—FIELD  
 AT—THE—FARM  
 ON—THE—ROAD**

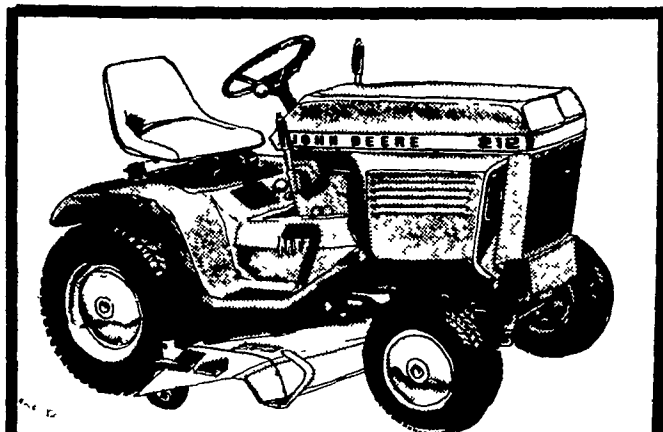
Our fully equipped farm service trucks and skilled repairmen bring you fast on-the spot tire REPAIRS, REPLACEMENTS and HYDRO-FLATION

**WHEN AND WHERE YOU NEED IT**

Our trucks are radio controlled for faster service when you need it!

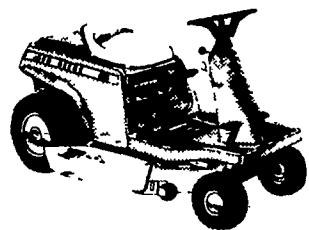
**SWEIGART TIRE SERVICE**  
 Formerly Sweigart Firestone

677 W. HIGH ST.      PHONE 665-2258  
 MANHEIM, PA      HOME 665-3603

## 10- to 14-hp Tractors

John Deere 200 Series Tractors offer three power sizes 10, 12, and 14 hp All provide built-in headlights, 3 5 U S gallon gas tank, and variable-speed drive to change ground speeds without clutching Optional attachments include 38- and 46-inch mowers, front blade, snow thrower, and rotary tiller



## 6-hp Riding Mower

Contoured styling encloses the engine for a quiet ride Five-speed transmission Wide 30-inch mower with adjustable cutting height, 1 to 4 inches



## Batteries

John Deere Batteries are built tough for trouble-free service Ask about a battery right for your machine Check our no-nonsense warranty policy


**JUST ANNOUNCED**  
 Special JDFF Finance waiver on new John Deere Lawn & Garden Tractors, Riding Mowers & Attachments

A.B.C. GROFF, INC.  
 New Holland 717 354-4191

LANDIS BROS. INC.  
 Lancaster, PA 717 393-3906

ADAMSTOWN EQUIPMENT INC.  
 Mohnton, RD2, PA 19540 (near Adamstown)  
 Phone (215) 484-4391

# Agway Feed Prepared Seattle Slew<sup>TM</sup> For Triple Crown Victory



Seattle Slew, undefeated winner of racing's Triple Crown, had Agway horse feed as his training ration during the critical yearling period.

"We found that Agway feed supplied the right nutrition for the job we wanted him to do," said Dr. Jim Hill, co-owner of Slew along with Mickey and Karen Taylor. "In fact, we've got all of our two-year olds on Agway feed."

**Doesn't your horse deserve Triple Crown treatment?**

Agway Horse Feeds are available Throughout the Northeast

