

# Livestock market and auction news

## Pa. Auction Summary

August 26, 1977  
**CATTLE** 8220. Compared with 8903 head last week, and 7476 head a year ago. Compared with last Friday's summary, slaughter steers 25 cents to \$1 higher. Slaughter heifers highly uneven. Slaughter cows steady to \$1.50 lower. Slaughter bulls and bullocks mostly steady. **STEERS:** High Choice and Prime 3-4, 40.75-42.75, Choice 2-4, 39.25-42.50, Good 35.00-39.25, Standard 32.00-35.50, few Utility 25.00-30.50. **HEIFERS:** Choice 34.00-39.00, Good 30.50-35.50, Standard 28.00-31.50, few Utility 23.00-28.00. **COWS:** Utility and Commercial 25.00-28.50, few to 29.00, Cutters 23.00-27.00, Canner and Low Cutter 21.00-24.50, Shells down to 15.00. **BULLOCKS:** Choice 35.00-38.50, Good 32.00-36.00, few Standard 29.00-32.00, few Utility 25.00-30.00. **BULLS:** Yield Grade No. 1, 1000-2100 lbs. 31.50-37.00, Yield Grade No. 2, 900-1600 lbs. 30.00-33.00. **FEEDER CATTLE:** Good and Choice 300-700 lbs. 28.00-35.00. Good and Choice 350-650 lbs. heifers 25.00-32.00, Medium 300-650 lbs. 21.50-26.75. Medium and Good 300-750 lbs. bulls 25.00-35.00. **CALVES** 5323. Compared with 4247 head last week, and 5688 head a year ago. Vealers mostly \$4 lower. **VEALERS:** Prime 65.00-78.00, Choice 50.00-65.00,

Good 40.00-55.00, Standard and Good 110-130 lbs. 35.00-45.00, 90-110 lbs. 29.00-36.00, Standard 70-90 lbs. 26.00-34.00, Utility 50-110 lbs. 22.00-28.00. **FARM CALVES:** Holstein bulls 90-120 lbs. 31.00-45.00. **HOGS:** 6228. Compared with 6046 head last week, and 6559 head a year ago. Barrows and gilts strong to \$1.50 higher. **BARROWS AND GILTS:** US No. 1-2 200-240 lbs. 48.00-49.00, few to 50.00, No. 1-3 200-250 lbs. 46.50-48.50, No. 2-3 190-260 lbs. 45.00-47.00, few No. 2-4 250-300 lbs. 40.00-44.50, No. 1-3 140-190 lbs. 36.00-42.00. **SOWS MOSTLY STEADY.** US No. 1-3 300-550 lbs. 33.00-38.00, No. 2-3 300-600 lbs. 28.00-33.50. Boars 22.00-28.00. **FEEDER PIGS** 1955. Compared with 1539 head last week, and 1605 head a year ago. Feeder pigs were unevenly steady to \$2 higher. **FEEDER PIGS PER HEAD:** US No. 1-3 20-35 lbs. 11.90-27.00, No. 1-3 35-50 lbs. 25.00-37.00, No. 1-3 50-75 lbs. 34.00-46.00, Utility 15-45 lbs. 8.00-21.00. **GRADED FEEDER PIGS** 752. Compared with 2800 head last week. Feeder pigs \$3 to \$6 higher, spots to \$15 higher. **ALL PRICES PER HUNDREDWEIGHT BASIS.** US No. 1-2 25-35 lbs. 100-118.00, 40-50 lbs. 98-104.00, 50-70 lbs. 86-91.00; US No. 2-3 25-40 lbs. 106-111.00, 40-55 lbs. 96-99.00, 55-65 lbs. 83.95.00; US No. 3, 20-35 lbs. 84-97.00, 40-50 lbs. 77-97; Utility 10-40 lbs. 78.81.00. **SHEEP** 882. Compared with 658 head last week, and 969 head a year ago. Spring

slaughter lambs steady to \$1, spots to \$3 higher. **LAMBS:** Choice 65-115 lbs. 44.00-52.50, few to 56.00, Good 50-90 lbs. 35.00-45.00. Slaughter ewes 6.00-19.50.

## Peoria Auction

Peoria, Ill.  
 September 1, 1977  
 Receipts this week: 5600  
 Last Week: 5300  
 Year Ago: 5500

Compared with last week's close, slaughter steers 50-1.00 lower. Slaughter heifers 50 lower. Cows 50-1.00 lower. Bulls steady. Receipts about 70 per cent slaughter steers, 25 per cent slaughter heifers, balance mostly cows.

**SLAUGHTER STEERS:** Choice and Prime 3-4 1100-1400 lbs. 40.25-40.75 load 41.00, late couple loads 40.25-40.50; Choice 2-4 1000-1250 lbs. 39.00-40.25; 900-1050 lbs. 38.00-39.00; Mixed Good and Choice 2-4 900-1300 lbs. 37.50-39.00; Good 2-3 35.00-37.50; few Good 2-3 holsteins 34.00-35.00.

**SLAUGHTER HEIFERS:** Choice and Prime 3-4 900-1025 lbs. early 38.50-39.00; part-load 39.25; late these kind scarce. Choice 2-4 850-1000 lbs. 37.00-38.00; part-load 38.50; 800-900 lbs. 35.00-37.00; Mixed Good and Choice 2-4 800-1100 lbs. 35.00-36.50; Good 2-3 33.00-35.00.

**BULLS:** Yield Grade 1-2 1100-1900 lbs. 29.00-33.00.

## Valley Livestock

Valley Stockyards  
 Athens, Pa.

Monday, August 29, 1977

Reported receipts of 525 calves, 166 cows, 48 hogs, 35 heifers, 20 sheep, 8 lambs, 26 bulls, and 9 steers. Cattle market steady and veals steady while bobs were easier.

Veals 35.00-65.00; bobs, 90-110 lbs. 30.00-38.00; bobs, 80 lbs. and down 20.00-29.50; grassers and feeders 18.00-29.50; lambs 43.00-52.50; sheep 2.00-10.50; hogs 200-250 lbs. 43.00-45.50; sows 23.00-36.00; boars 22.00-25.50; pigs 9.00-21.50; heifers 22.00-28.50; steers, good 34.00-38.00; steers, common, 28.00-33.00; bulls 28.00-35.00; cows, good 25.50-27.00; cows, medium 22.75-25.00; cows, poor or small 16.50-22.50; horses 70.00; ponies 15.00; goats 13.50-21.00.

**COWS:** Utility and Commercial 2-3 23.00-25.00; High-Dressing Utility 25.25-25.50; few 26.00; Cutter 1-2 21.00-23.00; Canner 19.00-21.00.

cerns. It should be noted, however, that not every dealer or broker handles each commodity. All prices are per bushel except ear corn and soybean meal which are per ton.

## Lancaster Grain

Thursday, Sept. 1  
 These prices are made up of the average prices quoted by a number of participating area feed and grain con-

BID+ OFFERED+		
Ear Corn	45.00	54.00
Shelled Corn	1.75	1.95
Barley	1.65	1.84
Oats		
Local	1.20	1.40
Western	1.52	1.71
Wheat	2.10	2.26
Soybean 5.12		
Soybean Meal		210.00

**WHAT BETTER GUARANTEE COULD YOU HAVE!**  
**JOHN F. TOUT, Paint Specialist, 30 Years**  
 MANUFACTURES PAINT - SELLS PAINT - APPLIES PAINT



**From Our Factory To Your Farm**  
**NO MIDDLEMAN INVOLVED**  
 Check your farm buildings NOW

**SPECIAL**  
 ACRYLIC LATEX PAINT  
 Exterior & Interior - White Only **\$6.00 Per Gal.**

Our Pennsylvania manufactured products are positively of supreme quality.

Call (717) 786-2061 - JOHN F. TOUT  
 Quarryville, PA 17566

# UP TO 25% OFF

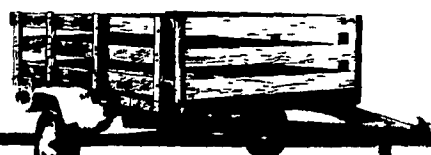
FACTORY OUTLET SAVINGS  
 ON HEAVY-DUTY, SUPER TOUGH

## TRAILERS

Trailers for every purpose at low factory outlet prices!

Save now on the best trailers on the market today! Capacities from 1000 to 30,000 lbs.

Model 907



### UTILITY TRAILERS

STAKE BODY KIT OPTIONAL  
 Choices of 4' to 7' widths  
 6' 4" to 16' lengths

#### STANDARD FEATURES

- Safety chains • ball coupler • 4 point electrical connector • stop, tail and turn signal lights • license plate holder and light • reflectors • weatherized exterior grade wood bed • three-ply springs • heavy duty automotive wheel axle assembly • weight capacities 1180 to 3000 lbs • tire sizes 4 80 x 88 or 5 70 x 88

Some models with jack stand, clearance lights, flotation tires and other features. Many optional features including tandem axles, loading ramp, stake body kit and many more

as low as  
**\$255**

Model 907



Model 900MC

#### MOTORCYCLE TRAILERS

- 1, 2 or 3 cycles
- Frame, 6' 4" x 49"
- Two 7" long cycle rails
- 1180 to 1430 lbs
- Loading ramp
- Extra cycle rail (optional)

SALE! SAVE \$\$!



GN 42096 BFR 30

#### FLAT BED GOOSENECK TRAILERS

- Bogie axle/over wheel
- Beaver tail
- Wt Capacity 30,000 lbs
- Overall length 31' 0"
- Bed length 20' 0"
- Loading width 96"

SALE! SAVE \$\$!



Model UT-12

#### COVERED TRAILERS

- 7' and 8' widths
- 12' to 32' lengths
- 8' 2" to 9' 7" heights
- 2000 to 10,000 lbs
- Single or tandem axles
- All metal exterior

SALE! SAVE \$\$\$!

Model 916ST6



FB21796BFR-15

#### HEAVY EQUIPMENT TRAILERS

- 8 ft width
- Bed lengths: 12' 6" to 27' 0"
- 6000 to 30,000 lbs wt cap
- Pintle eye or goose neck hitch
- Single, tandem or tri axle
- Loading or flip up ramps

SALE! SAVE \$\$!



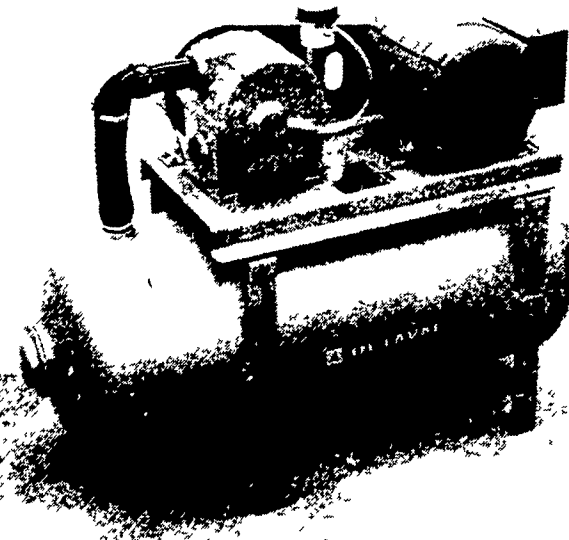
GN21694DB-20

#### GRAIN TRAILERS

- Removable 300 bu. grain box
- Wt capacity, 20,000 lbs
- Overall length: 24' 2"
- Dump bed
- Tandem axles
- Bed length: 16' 0"

SALE! SAVE \$\$\$!

## The De Laval Unitized Vacuum Group



### OUR RUGGED Space Saver

Because the tank and pump are "unitized", the DeLaval vacuum pump takes up less space. That means more room in the parlor. We designed it for easy cleaning and maintenance, ruggedness, long pump life, and quieter operation. With a sufficient capacity for every dairy farm. See one today.

FOR FURTHER INFORMATION CONTACT

**J. B. ZIMMERMAN & SONS**  
 SALES & SERVICE

West of Blue Ball, PA on Rt. 23  
 Phone (717) 354-4955

## NOW . . . RUSTPROOFING AVAILABLE



### MGS TRAILERS

DIRECT FROM THE FACTORY SALES

Division of MGS, Inc.

Muddy Creek Church Rd. R.D. 3 Denver PA (1 1/2 mi. E of Pa Turnpike—Exit 21)  
 Open daily 8 5 Saturday 8 12 Phone 215 267 7528

