

Hog Markets

Lancaster Market

Lancaster, Pa.
Monday, August 22, 1977
HOGS: Barrows and gilts 1.50-2.00 higher.
BARROWS AND GILTS: US 1-2 200-240 lb. 48.75-49.10; Few US 1 200-235 lb. 49.25-50.00; US 1-3 200-235 lb. 48.35-48.75.

New Holland Feeder Pig

New Holland, Pa.
Wednesday, August 24, 1977
Feeder Pigs
Today 784
Last Wednesday 1004
TREND: Compared to last Wednesday feeder pigs uneven, US 1-2 5.00-10.00 higher, US 2-3 10.00 to extremes 20.00 higher. All prices on a per hundred weight basis.
US 1-2 30-50 lb. 98.00-111.00; 130 Head 23-40 lb. 112.00-118.00; 50-75 lb. 85.00-95.00.
US 2-3 30 Head 15 lb. 152.50; 30-50 lb. 96.00-111.00; 40-60 lb. 85.00-95.00.
50 Head Utility 25-40 lb. 78.00-81.00.

Lancaster Auction

Lancaster, Pa.
Wednesday, August 24, 1977
HOGS: Barrows and gilts 1.00-1.25 lower.
Barrows and gilts; US 1-2 200-240 lb. 47.75-48.75; Few US 1 200-235 lb. 48.75-49.00; US 1-3 200-245 lb. 47.00-47.75; US 2-3 245-270 lb. 45.00-46.50.

New Holland Hog

New Holland, Pa.
Monday, August 22, 1977
Hog Auction
Today 1427
Last Monday 1347
TREND: Compared to last Monday barrows and gilts 1.50-2.00 higher. Bulk of supply US 1-3 200-255 lb. barrows and gilts.
BARROWS AND GILTS: US 1-2 200-235 lb. 48.50-48.75; US 1 210-235 lb. 48.85-49.10; One Lot 50.00; US 1-3 200-250 lb. 47.60-48.35; Few US 2-3 200-250 lb. 46.85-47.35; 265-280 lb. 45.75-46.10.

St. Louis Hog Market

Thursday, August 25, 1977
5500 - Barrows & gilts moderate, 50 lower. US 1-2 200-240 lb. 46.00-46.25, large share 46.00; US 1-3 200-250 lb. 45.75-46.00.
Sows: Steady. US 1-3 300-600 lb. 38.00-38.50.

Indianapolis

Thursday, August 25, 1977
1500 - Barrows & gilts moderately active, 25 instances 50 lower. US 1-3 200-250 lb. 46.00-46.50.
Sows: Moderately active, unevenly steady to weak. US 1-3 300-425 lb. 37.50-38.00.

Peoria Hog Auction

Thursday, August 25, 1977
HOGS: 3000
Barrows & gilts fairly active, opening 25-50 lower.
US 1-2 200-240 lb. 46.00-46.50; US 1-3 200-250 lb. 45.50-46.00.
Sows: Mostly steady. US 1-3 350-650 lb. 38.00 to mostly 38.50.

Vintage Hog

Saturday, August 20, 1977
Reported 646 head.
No. 1, 210-240 lbs. 48.00-49.39; No. 2-3, 210-240 lbs. 46.75-48.00; sows 34.00-36.50; boars 28.75-29.00; heavystraights, 280-290 lbs. 39.75-40.00; 1 load lightweights, 160 lbs. 40.25.
Wednesday, August 24, 1977
Reported 652 head.
No. 1, 210-240 lbs. 48.50-50.00; No. 2-3, 210-240 lbs. 47.25-48.50; sows 35.00-36.75; boars 29.75-31.00; heavystraights, 260-270 lbs. 44.00-45.25; lightweights, 145-175 lb. 36.00-40.25.

Lancaster Grain

Friday, Aug. 26
These prices are made up of the average prices quoted by a number of participating area feed and grain concerns. It should be noted, however, that not every dealer or broker handles each commodity. All prices are per bushel except ear corn and soybean meal which are per ton.

The average prices quoted Friday, Aug. 26 are as follows:

	BID	OFFERED
Ear Corn	45.50	55.50
Shelled Corn	1.78	2.00
Barley	1.62	1.84
Oats		
Local	1.20	1.40
Western	1.53½	1.71
Wheat	2.10	2.20
Soybean	5.15	
Soybean Meal		195.00

New Holland Horse

New Holland Sales Stables
Monday, August 22, 1977
Reported receipts of 345 horses and ponies. Market steady with last week's market.

Load of driving horses from Pa. 310-925; load of driving horses from New York 280-600; load of riding horses from Tennessee 330-710, 1 reg. Quarterhorse 1375; local work horses 450-650; driving horses 175-500; riding horses 175-300; better horses 325-500; lightweight killers 18-26; heavyweight killers 29-32; mares 15-55; colts 10-25; geldings 15-50; larger ponies 75-165.

Danville Auction

August 22, 1977
STEERS: 40.00-41.35; Good and Choice 38.00-40.10; Standard to Good 35.00-37.50; Other 31.00-34.85.
HEIFERS: Good to Choice 32.00-34.00; Other 28.75-31.00.
BULLS: 31.00-36.35.
COWS: High Choice to Prime 28.00-29.60; Good to Standard 26.10-27.85; Utility 24.35-25.85.
CALVES: Good to Choice 45.00-54.00; Standard to Good 24.00-40.00.
HOGS: 47.50-50.25.
SOWS: 28.00-37.00.
BOARS: 24.00-30.00.

Futures Trading

(Closing Bids as of Thursday, August 25)

	Chicago Cattle	Chicago Hogs	New York Maine Potatoes	Chicago Fresh Eggs
Sept.				57.40
Oct.	39.00	38.15		53.10
Nov.			4.40	56.65
Dec.	37.80	36.90		57.90
Jan.	37.50			55.00
Feb.	37.20	34.30		
March			5.06	
April	37.45	31.60	5.46	
May			6.10	

Trend - Cattle are higher, Hogs are higher, Potatoes are higher, and eggs are higher.

Market Provided by Commodity Department
Reynolds Securities, Inc.

CHICAGO GRAIN FUTURES

(Closing Bids as of Thursday, August 25)

	Corn	Wheat	Soybeans	Soybean Meal
Sept.	1.85¼	2.19½	5.23	136.50
Oct.				135.50
Nov.			5.16	
Dec.	1.93¾	2.30½		137.60
Jan.			5.22½	139.60
March	2.01¼	2.39¾	5.30	143.50
May	2.05¾	2.43¾	5.35	146.60

Trend - Corn is unchanged to higher, Wheat is unchanged to higher, Soybeans are lower, and Soybean Meal is lower.

Market Provided by Commodity Department
Reynolds Securities, Inc.

U.S. Inspected Livestock Slaughter

Estimated Daily Livestock Slaughter Under Federal Inspection

	CATTLE	HOGS	SHEEP
Week to Date	597,000	1,105,000	91,000
Same Period Last Week	595,000	1,083,000	94,000
Same Period Last Year	597,000	1,111,000	90,000

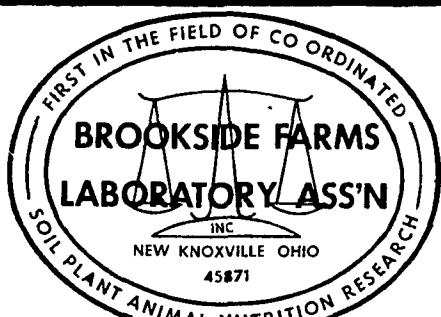
HAY, STRAW & CORN

-SALE-

Every Friday at 12 Noon.

Green Dragon Market & Auction

RD No. 4 Ephrata, Pa. 717-733-2334
1 mile North of Ephrata on N. State St.

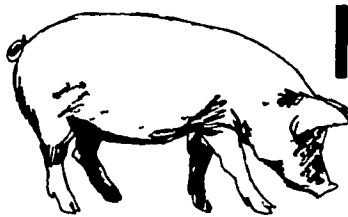


National Reputation — Local Service

CONTACT:
JOHN CAMPBELL
Atglen, PA
(215) 593-5529
GARY McGEE
Spring Run, PA
(717) 349-2340
DAN DERR
Conowingo, MD
(301) 378-3280

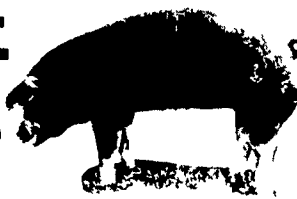
ATTENTION CATTLE FEEDERS

Do you want to make buying your stockers and feeders easy. It can be very simple Just call and give us your order. All orders filled to your exact specifications. Call us anytime We can be very helpful.



NEXT FEEDER PIG SALE

TUESDAY, AUG. 30 - 1 P.M.



Consign all your feeder pigs to Walter M. Dunlap & Sons where they will be handled by a capable and experienced staff.

Feeder pigs received from 6 A.M. to 11 A.M.

WALTER M. DUNLAP & SONS

LANCASTER STOCK YARDS

Consignors can get state tags at our office, thereby saving 25c marketing expense

For Further Information, Call 717-397-5136

J.M. HOOBER INC.

Serving You Since 1895

LANCASTER STOCK YARDS

Let us put your corn to work. At this time it makes good sense to turn corn into beef and pork. We at J.M. Hooper Inc. stand ready to assist you in the buying and marketing of all your livestock needs.

OUR BUSINESS IS MORE THAN LIVESTOCK
OUR BUSINESS IS SERVICE TO YOU

Next Feeder Pig Sale - August 30, 1977

J.M. Hooper Steer Division
Ph: (717) 397-6191, 569-2084

Please Call Us Soon
J.M. Hooper Hog,
Calf & Sheep Division
Ph: (717) 397-6191, 626-5659