

# Hog Markets

## Lancaster Market

August 8, 1977

**HOGS:** Barrows and gilts firm to 75 higher, mostly 50-75 up; sows steady.

**BARROWS AND GILTS:** US 1-2 200-235 lbs. 45.50-46.25; few US 1 200-235 lbs. 46.50-47.00; US 1-3 200-245 lbs. 44.75-45.50; US 2-3 255-275 lbs. 42.00-44.25.

**SOWS:** US 1-3 375-600 lbs. 33.00-35.50.

## Lancaster Auction

August 10, 1977

**HOGS:** Barrows and gilts mostly 50-1.00 higher; sows mostly 1.00 higher.

**BARROWS AND GILTS:** US 1-2 200-235 lbs. 46.00-47.00; few US 1 200-235 lbs. 47.50-48.00; US 1-3 200-245 lbs. 45.00-46.00; Some US 1-3 170-190 lbs. 38.00-43.00.

**SOWS:** US 1-3 330-525 lbs. 34.00-36.00.

## New Holland Hog

New Holland, Pa.  
Monday, August 8, 1977

Today 1457

Last Monday 1208

**TREND:** Compared to last Monday barrows and gilts steady to firm.

**BARROWS AND GILTS:** US 1-2 200-240 lbs. 44.85-45.75; 10 Head US 1 210-220 lbs. 46.50-47.00. US 1-3 200-245 lbs. 44.10-45.00; Few lots US 2-3 245-255 lbs. 43.25-43.85.

## St. Louis Hog Market

August 11, 1977

**HOGS:** 5500. Barrows & gilts active, 50-1.00 higher.

US 1-2 200-240 lbs. 45.50-45.75, US 1-3 200-260 lbs. 45.25-45.50.

**SOWS:** Uneven, generally steady to 75 higher. US 1-3 300-450 lbs. 37.25-38.00.

## Vintage Hog

Saturday, August 6, 1977

Reported 1045 head.

No. 1 210-240 lbs. 45.50-46.85; No. 2-3 210-240 lbs. 44.00-45.50; sows 33.75-34.75; boars 27.50-31.25; heavystraights 260-280 lbs. 37.75-41.10; lightweight 145-180 lbs. 35.00-36.50.

Wednesday, August 10, 1977  
Reported 526 head.

No. 1 210-240 lbs. 46.00-46.85; No. 2-3 210-240 lbs. 45.00-46.00, main supply 46.00 and up; sows 35.25-35.75; boars 28.00-32.00; heavystraights 280-310 lbs. 38.00-41.00; lightweight 140-175 lbs. 35.00-41.00.

## New Holland Feeder Pig

New Holland, Pa.  
Wednesday, August 10, 1977

Today 1155

Last Wednesday 939

**TREND:** Compared to last Wednesday feeder pigs steady to 5.00 higher. All prices on a per hundred weight basis. US 1-2 30-40 lbs. 94.00-110.00; 41-50 lbs. 81.00-93.50; 50-65 lbs. 76.50-81.00. US 2-3 27-40 lbs. 85.00-100.50; 40-57 lbs. 69.00-95.00; 60-75 lbs. 62.00-70.50. US 3 30-65 lbs. 57.00-74.00.

## Lancaster Grain

Friday, Aug. 12

These prices are made up of the average prices quoted by a number of participating area feed and grain concerns. It should be noted, however, that not every dealer or broker handles each commodity. All prices are per bushel except ear corn and soybean meal where are per ton.

The average prices quoted Friday, Aug. 12 are as follows:

	Bid+	Offered+
Ear Corn	51.00	59.50
Shelled Corn	1.88	2.08
Barley	1.60	1.77
Oats		
Local	1.14	1.34
Western	1.54	1.71
Wheat	2.16	2.31
Soybeans	5.60	
Soybean Meal		207.50.

## Indianapolis

August 11, 1977

**HOGS:** 1700.

Barrows & gilts very active, 50-1.00 higher.

US 1-3 200-250 lbs. 45.50-46.00.

**SOWS:** Active, strong to 50 higher, wts. under 450 lbs. not well tested. US 1-3 450-575 lbs. 38.50-39.00.

## Peoria Hog Auction

August 11, 1977

**HOGS:** 2500.

Receipts currently 600 over estimate. Barrows & gilts active, opening 75-1.00 higher.

US 1-2 210-240 lbs. 45.50-45.75, near 300 head 46.00; US 1-3 200-250 lbs. 45.00-45.50.

**SOWS:** Uneven, mostly steady. US 1-3 350-500 lbs. 37.00-38.00.

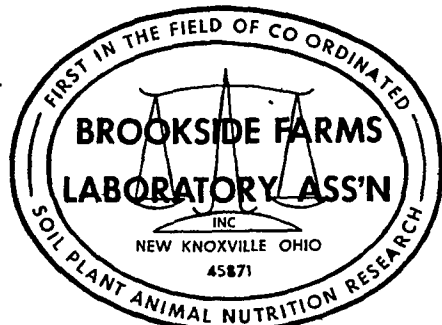
## HAY, STRAW & CORN

-SALE-

Every Friday at 12 Noon.

## Green Dragon Market & Auction

RD No. 4 Ephrata, Pa. 717-733-2334  
1 mile North of Ephrata on N. State St.



National Reputation - Local Service

### CONTACT:

**JOHN CAMPBELL**

Atglen, PA  
(215) 593-5529

**GARY MCGEE**

Spring Run, PA  
(717) 349-2340

**DAN DERR**

Conowingo, MD.  
(301) 378-3280

## READ

LANCASTER FARMING FOR FULL MARKET REPORTS

# Futures Trading

(Closing Bids as of Thursday, August 11)

	Chicago Cattle	Chicago Hogs	New York Maine Potatoes	Chicago Fresh Eggs
Aug.	40.25	43.20		
Sept.				54.40
Oct.	38.50	36.30		51.10
Nov.			4.53	56.80
Dec.	38.10	35.60		58.15
Jan.				54.45
Feb.	37.70	35.55		
March			5.33	
April			5.77	
May			6.55	

Trend-Cattle are lower, Hogs are lower, Potatoes are lower and eggs are higher.

Market Provided by Commodity Department  
Reynolds Securities, Inc.

# CHICAGO GRAIN FUTURES

(Closing Bids as of Thursday, August 11)

Aug.		6.04½		145.30
Sept.	2.23¾	1.94½	5.59	145.80
Oct.				143.30
Nov.			5.45½	
Dec.	2.35	2.03½		144.80
Jan.			5.51¾	146.70
March	2.43½	2.11	5.58	150.00
May	2.48¾	2.15½	5.56½	156.00

Trend-Corn is higher, Wheat is lower, Soybeans are lower and Soybean Meal is lower.

Market Provided by Commodity Department  
Reynolds Securities, Inc.

# U.S. Inspected Livestock Slaughter

Estimated Daily Livestock Slaughter Under Federal Inspection

	CATTLE	HOGS	SHEEP
Week to Date	591,000	1,061,000	91,000
Same Period Last Week	570,000	1,050,000	96,000
Same Period Last Year	599,000	1,056,000	108,000

## J.M.HOOBER INC.

SINCE 1895

LANCASTER STOCK YARDS

If you want your hard-earned moneys worth in quality feeder cattle and if you want expert handling of your market cattle then we should get to know each other. Please feel free to call us at any time for up-to-the-minute market information. Remember - when it comes to livestock - J. M. Hooper is Number 1.

OUR BUSINESS IS MORE THAN LIVESTOCK  
OUR BUSINESS IS SERVICE TO YOU

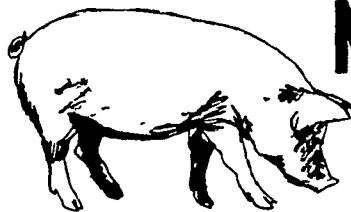
FOR TOP MARKET DOLLARS

J. M. Hooper Steer Division  
Ph: (717) 397-6191, 569-2084

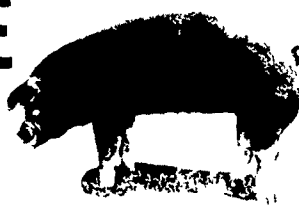
Please Call Us Soon  
J.M. Hooper Hog,  
Calf & Sheep Division  
Ph: (717)397-6191, 626-5659

# ATTENTION CATTLE FEEDERS

Do you want to make buying your stockers and feeders easy. It can be very simple. Just call and give us your order. All orders filled to your exact specifications. Call us anytime. We can be very helpful.



## NEXT FEEDER PIG SALE TUESDAY, AUG. 16 - 1 P.M.



Consign all your feeder pigs to Walter M. Dunlap & Sons where they will be handled by a capable and experienced staff.

Feeder pigs received from 6 A.M. to 11 A.M.

## WALTER M. DUNLAP & SONS

LANCASTER STOCK YARDS

Consignors can get state tags at our office, thereby saving 25c marketing expense

For Further Information, Call 717-397-5136