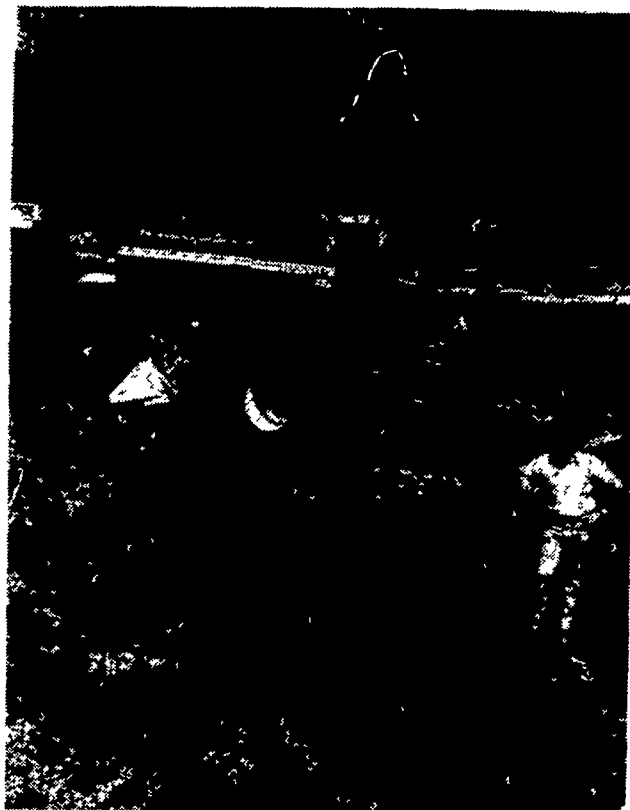


WHAT'S NEW

BIG BALE SYSTEM
Hesston's new 4800 Big Bale System is a complete system with normal capacity of 20 tons of hay per hour innovations throughout the 4800 system make it possible to package hay in tightly compressed bales weighing up to one ton. Companion moving and feeding equipment completes the system for total efficiency from field to feeding.

At the heart of the system is the 4800 Baler. The extra-wide 75-inch pickup is the widest available on any

popular baler on the market. Narrow tine spacing and stub augers at each side of the pickup contribute to high capacity. Hay is directed through a 48-inch wide opening to an exclusive charge chamber. Here the crop is accumulated until just enough hay is gathered to form a uniform flake. A sensing device actuates stuffing fingers when the proper amount of hay has accumulated in the charge chamber. Hay is then carried by the stuffing fingers up into the plunger where it is compressed into the bale.



Unique features in this part of the baler include a slow-moving plunger (26 strokes per minute compared to 80 or more on conventional balers) and bale chamber compression system that automatically controls pressure at both sides and top for consistently uniform bales. As conditions change throughout the day, a hydraulic sensor on the plunger automatically adjusts bale chamber pressure hydraulically so each bale has uniform density. Because the plunger speed is low, leaf damage and chopping are minimized.

An all-new double knotter device is also exclusive to the 4800. Each bale is

wrapped with six pieces of twine. As a completed bale is tied off, knots for the next bale are consecutively tied. The knotters tie twice per ton compared to 15 to 30 ties per ton on conventional balers. Knotter breakdown is minimized since twine is not held under tension during tying. Twine saving also results with the 4800 using about 70 per cent less than conventional balers.

The bale itself measures four feet by four feet three inches by up to eight feet long. Depending on the material being baled, it may weigh as much as one ton. Bale density normally exceeds 15 lb.-cu. ft. in alfalfa hay. At this size and weight, the big bale is in good proportion to meet tran-

Lancaster Farming, Saturday, August 13, 1977-27

sportation limits and regulations. A typical load might consist of bales loaded 2 bales wide and 2 bales high, providing a 1000-pound payload per available foot of trailer length with 8 foot wide load in alfalfa hay.

Tractor requirements for the 4800 baler are a minimum 100 PTO horsepower equipped with 1000 rpm PTO and single remote hydraulic system.

Bales are unloaded as they're completed in the field. The 4820 Accumulator will allow the operator to gather three bales at the rear of the baler before releasing the load. The Accumulator will eliminate an extra trip over the field.

The 4830 Loader Attachment is also part of the 4800 system as an attachment to many makes of front-end farm loaders. It is used to load bales out of the field and onto transport vehicles or to unload bales for stacking up to three high.

This hydraulic unit is designed with tines that penetrate the bale at top and bottom. Without damaging bale appearance, the 4830 positions the bale under the loader arms for maximum loader safety and stability.

Feeding efficiency for the big bale is made possible by the 4870 Processor. This feeding unit self-loads two bales from the ground and processes them into a

windrow configuration. Hay chopping is held to a minimum so nutrient-rich leaves remain intact.

Heavy-duty chains in the unit's bed move the bales toward the rotor area. A peak in the floor causes flakes to separate and fall into the processing area to eliminate bunching and clogging.

Tractor requirements for this unit are 50 PTO horsepower and 540 rpm PTO with dual remote hydraulics.

For more information about Hesston's 4800 Big Bale System, with a targeted production date in the Spring of 1978, write the Hesston Corporation, Hesston, Kansas 67062.

WHITE WASHING with DAIRY WHITE

- DRIES WHITE
- DOES NOT RUB OFF EASILY
- NO WET FLOORS
- IS COMPATIBLE WITH DISINFECTANT AND FLY SPRAYS
- WASHES OFF WINDOWS & PIPELINES EASILY.

ALSO BARN CLEANING SERVICE AVAILABLE WITH COMPRESSED AIR

To have your barn cleaned with air it will clean off dust, cob webs & lot of the old lime. This will keep your barn looking cleaner & whiter longer.

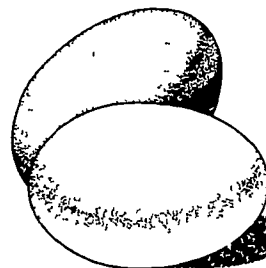
MAYNARD L. BEITZEL

Witmer, PA 17585 717-392-7227
If no answer call Willard Beitzel 717-656-9569

Barn spraying our business, not a side-line.
Spraying Since 1961

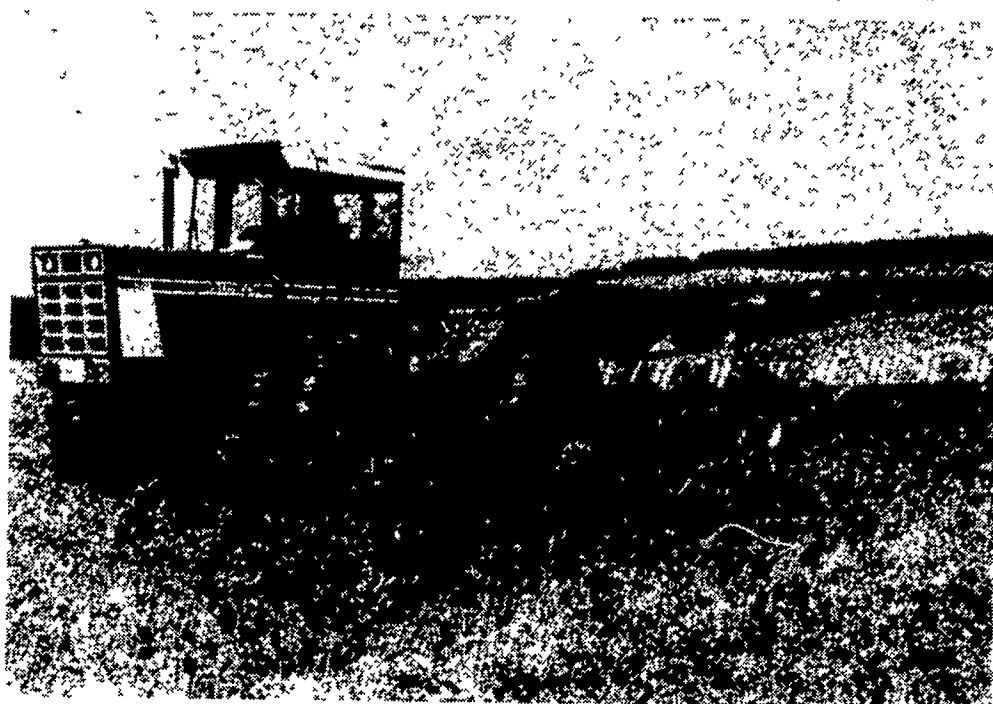
HIGH PRESSURE WASHING AND
DISINFECTING POULTRY HOUSES
AND VEAL PENS.

YOU'RE IN GREAT SHAPE WITH EGGS!



Economical,
easy to
serve.

IH 4-WHEEL DRIVES CAN DO IT ALL...CHEAPER & FASTER!



CALL ERB & HENRY FOR A PERSONAL DEMONSTRATION.

We've got a Model 4386 on display
and ready for delivery!

REMEMBER . . .

Don't Buy Til You've Checked With Us. We Have
Our Own Special Deals Plus Factory Allowances.



INTERNATIONAL
AGRICULTURAL
EQUIPMENT

THE RIGHT CONNECTION

ERB & HENRY EQUIP., INC.

New Berlinville, PA 19545

(215) 367-2169

BEFORE YOU BUY ...
SEE ERB & HENRY
'CAUSE WE'RE READY
TO DEAL!

Three ways to big pulling power

- 4586—800 cu. in. turbocharged V-8 delivers 300 engine hp*, 235 drawbar hp*.
- 4386—466 cu. in. intercooled turbocharged diesel "6" delivers 230 engine hp**, 175 drawbar hp**.
- 4186—436 cu. in. turbocharged diesel "6" delivers 150.6 PTO hp*, 130.4 drawbar hp*.

*Official test
**Mfr est

HOURS:
DAILY 7 to 5:30
FRI. to 9
SAT. to 4