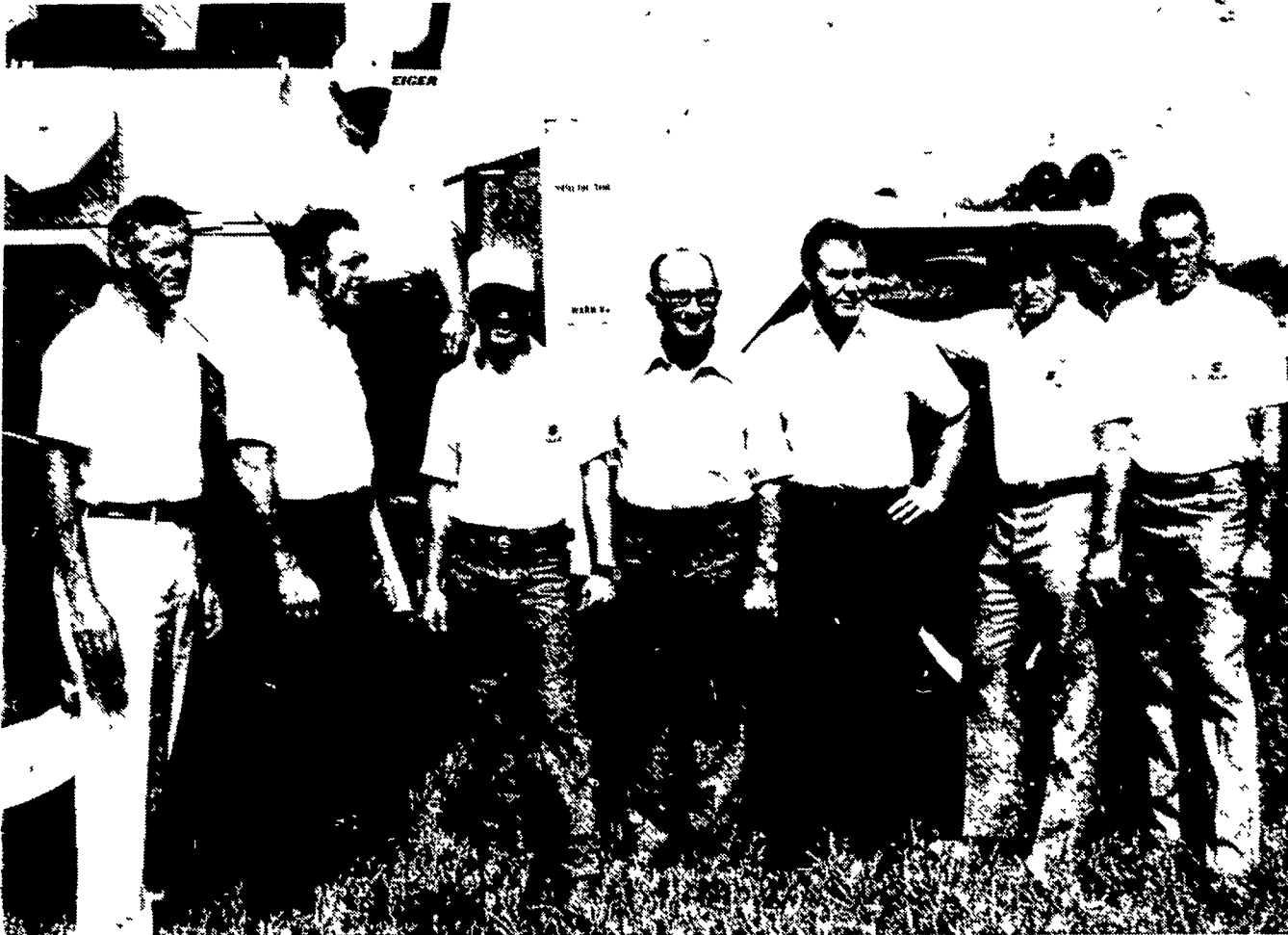
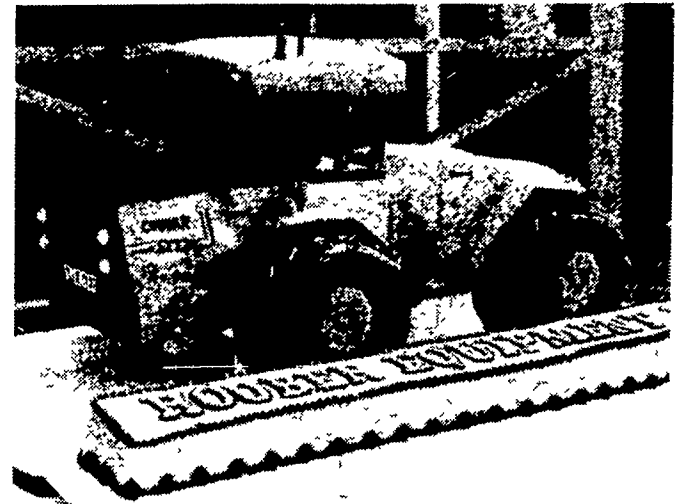


Era of government control predicted by Steiger president at Hooper open house



The Steiger tractor people gather with the Hooper personnel to discuss the day's events. From left to right are: Bob Neva, Steiger regional sales manager; Don Owens, Steiger manager of sales; Charlie Hooper Jr., Hooper Equipment

president; Darryl Peiffer, Hooper Equipment general manager; C.B. Hooper, Jack Johnson, Steiger Company president; Wally McNamee, Steiger district manager; and Jim Proctor, Hooper Equipment salesman.



Mrs. Paul Master of Clayton, Del. baked this cake for the Open House occasion at Hooper's Sudlersville, Md. store.

FISHER SPRAY PAINTERS
(Henry K. Fisher Inc.)
SANDBLASTING and SPRAY PAINTING
INTERIOR and EXTERIOR
Aerial Ladder Equipment
Office & Shop - 667 Hartman Station Rd.
Residence - 2322 Old Philadelphia Pike
Lancaster, Penna.
For FREE Estimates Call 717-393-6530



Jack Johnson, resident of Steiger tractor Inc., warns the 50 farmers who attended Hooper Equipment Inc.'s Open House that the U.S. government wants a controlled market system of farm pricing.

INTERCOURSE - Hooper Equipment Inc. officially opened its new building at an open house and field day on August 2. Three hundred fifty farmers gathered at the Sudlersville, Maryland store to see 10 new Steiger tractors hitched to 10 heavy-duty tillage tools and to hear Steiger President, Jack Johnson commend Charles Hooper Jr. for doing an outstanding job of representing the big 4-wheel drive tractors in the East. Johnson told his farmer audience that he had spent the previous day in Washington, D.C. where he and representatives of 30 other farm equipment manufacturers had met with the assistant secretary of the U.S. Department of Agriculture to discuss government farm policy. "We are entering an era of government control," Johnson warned, "that will end the free enterprise system as it relates to farm

commodity prices." Secretary of Agriculture Bergland is not to blame for the shift in farm policy, but is only a victim of circumstances. Johnson asked the farmers in the audience to write their congressional representatives and express their concern for the demise of the free market system. This treat, he felt, should not be ignored. Following Johnson on the open house program, Charlie Hooper introduced Don Owens, national sales manager of Steiger Tractor; Earl Christianson, Steiger dealer since 1961 in the Red River Valley of North Dakota; Bob Ralph, Eastern sales manager of Krause Plow Co.; Gerald Meier, general manager of Sunflower Manufacturing Co.; and Erling Falk of Wil-Rich Manufacturing. In the afternoon the farmers followed the parade of Steiger tractors and implements to the field.

Cool days favored work

HARRISBURG - The coolest week in a month treated farmers in the Commonwealth to a good time for outside activities, with just over five days rated suitable for fieldwork, according to the Pennsylvania Crop Reporting Service.

Temperatures for the week of July 26 to August 1 averaged four to eight degrees below normal for us time of the year, and showers provided moisture over the weekend. Soil moisture is now rated adequate by 90 per cent of respondents.

Virtually all reporters say the crop looks very good statewide, with height rated: 70 inches, slightly taller than at this time last year. The crop is averaging almost 73 inches in the north, 73

inches in the central counties, and 77 inches in the south, with tasselling reported in most areas.

Potatoes are reported in good condition and early varieties are being harvested in all parts of the state. Good yields are being reported in all areas. Soybeans are in fairly good shape.

This month's rains have caused hay and pasture lands across the state to continue recovery from the dry Spring. This is reflected in the fact that almost 60 per cent of the respondents rated the quality of hay made last week as good, with most of the rest rating it as fair.

Second cutting of alfalfa remained at just over 70 per cent harvested, still ahead of last year's rate. Many respondents are com-

menting that later cuttings are yielding much more than the first cut, but there are still reports of activity by the alfalfa leafhopper. Pastures are in good growth at this time, with 71 per cent of the operators reporting average amounts of feed being obtained from them.

Apples are reportedly sizing well with some early varieties being sold. Some early peaches are being harvested in southern areas of the state with color and sizing reported as fair.

All vegetables are reported to be doing well. Sweet corn is available in volume in all areas of the state, and early tomatoes are available for fresh market. Cabbage is developing well with some reports of early harvesting.



I Can Go to Work Now...

WITH MY FINANCING TAKEN CARE OF...

We speak 'farm-talk' . . . which means we understand the special financial needs of farming and the importance of your time! If you're in need of extra cash, whether it be for equipment, fertilizer, livestock, seed or expansion . . . see us. We won't tie you up with lengthy business transactions. We'll speak your language!

THE FARMERS NATIONAL BANK OF QUARRYVILLE

SMALL ENOUGH TO KNOW YOU
LARGE ENOUGH TO SERVE YOU

TWO CONVENIENT SOUTHERN LANCASTER COUNTY LOCATIONS
QUARRYVILLE PHONE (717) 786-7337 PENN HILL

An Equal Opportunity Lender • Member F.D.I.C. • Each Account Insured to \$40,000.