

## PUBLIC SALE

OF 117 ACRE FARM AND 112 ACRE FARM ALSO DAIRY HERD AND FARM EQUIPMENT

Located approximately 5 miles North of Myerstown. Take Route 501 North to Mill Road, turn left to farms.

**SATURDAY, SEPTEMBER 10, 1977**

At 10:00 A.M.

FARM No. 1 - 117 Acres, 95 acres tillable, mostly level to gentle slope, good fertile soil, very clean no rocks, type soil, part Ryder and Wiltshire silt loam, small part shale mixture, Swatara Creek and small creek flowing through property. House brick, first floor modern kitchen, dining room, and living room, Second floor, four bedrooms and bath, full basement oil-hot-water heat, 2,000 gallons in ground tank, water supply 270 ft. well.

Bank barn, three bay drive in 42' x 110' old-type stables, 12' x 55' tile silo, frame 3 bay garage, level around buildings.

FARM No. 2 - 112 acre dairy farm, approximately 95 tillable, level to gentle slope, good fertile soil. House frame, first floor, four rooms with modern kitchen, Second floor, four rooms and bath, full basement, oil-hot-water heat 2,000 gallons in ground tank. Water supply two wells and 1/2 acre farm pond. Barn 40' x 74' bank barn free span dome roof, 37 stanchions, 80' x 88', 120 free stall cow barn, 26' x 44' free stall building, 65' auger feeder with roof, 12' x 45' stave silo, 14' x 45' concrete silo, 14' x 21' milk house, 30' x 30' 1 1/2 story corn and equipment shed, 30' x 100' trench silo, wooden sides, concrete floor, 30' x 60' implement shed, 20' high free span.

Real Estate to be sold at 1:00 P.M. Inspection, anytime by appointment to be offered each individual farm or by entirety. Farms are land joining.

For inspection call HORNING FARM AGENCY, INC. 215-286-5183.

Terms: 10% down day of sale. 60 day settlement.

Terms by:

**ROY C. & JANET McLAIN**

Patrick M. Reb, Atty.

Elton & Alvin Horning, Auct.

HORNING FARM AGENCY, INC.

Main Street

Morgantown, Pa. 19543

## PUBLIC SALE

**SATURDAY, AUGUST 20, 1977**

9:30 A.M.

COMPLETE DISPERSAL  
CHAROLAIS—CROSS BEEF COWS  
TOOLS, H.H. GOODS, ANTIQUES

Located along Mt. Pleasant Rd., Mt. Joy, Pa. Midway between Mt. Joy and Elizabethtown, Pa. Just off Rt. 283. Take Rheims Exit off Rt. 283, go North on Cloverleaf Rd. 1/4 mile to Mt. Pleasant Rd. Look for sale signs.

40 - HEAD BEEF COWS, The majority being Charolais-Hereford Cross, balance Charolais-Angus Cross. Mostly with calves by their side. T.B. & Blood tested. Pregnancy checked. Health charts. Good 4-H and FFA projects.

PURE BRED HERD SIRE: Homestead Sampson 403. Sampson sires size, strength and rugged calves.

Cattle will be sold in tent at 1:00 P.M.

TOOLS—H.H. GOODS—D.B. Garden tractor, 3 B. disc plow, Co-op front mount cultivator, roller-harrow, Case hammermill, manure scoop, loader scoop attachment, corn planter, corn sheller, wh. weights, tractor cab, table saw, scorer, metal roofing, cooling compressor, milker pump, chicken crates, feeders, grind stone, hand sprayer, forks, grass seeders, assortment of hammers, saws, and jacks; ax and pick heads, door latches, antique running gear, iron wheels, fanning mill, OLD BED, jelly cupboards, blanket chests, church benches, wooden barrels, nail kegs, wooden egg case, pitcher pumps, cast iron troughs, lantern collection, license plates (1920+), milk bottles, 1-2-qt. & pt. jars.

Amana refrig-freezer, Caloric 6-burner gas stove, 20" Wincoft gas stove, two dining room suits, chairs, roll-away cot, 4-pc. bedroom suit, bureaus, Maytag washers, berry crated & boxes, oil space heater, and many many useful items not listed. COME EARLY LOTS OF ITEMS SELLING.

SALE ORDER: Sm. Tools & H.H. Goods at 9:30, Cattle at 1:00 P.M. Lunch available.

Sale by:

**MRS. ALMA W. KOPP**

Roy Kopp, Deceased

C.H. Wolgemuth & H. Shaffner (Aucts.)  
Ph: 665-5664

# Goshen sheep

[Continued from Page 115]

Yearling Ewe

1. Jeff Baroni, 2. and 3. Kathleen Baroni, 4. Ann Baroni.

Ram Lamb

1. Ann Baroni.

Pair

1. Ann Baroni, 2. Kathleen Baroni.

Champion Dorset Ewe

Jeff Baroni.

Reserve Champion Dorset Ewe

Michele Stone.

HAMPSHIRE Ewe Lamb

1. Jeff Baroni, 2. David Lytle, New London; 3. Craig Baroni, 4. Chris Baroni.

Yearling Ewe

1. Daryl Schafer, 2. Jeff Baroni.

Aged Ewe

1. Ann Baroni.

Ram Lamb

1. and 2. Ann Baroni, 3. Daren Blumenthat, 4. and 5. Daryl Schafer.

Progeny

1. Ann Baroni.

Pair

1. Ann Baroni, 2. Daryl Schafer.

Champion Hampshire Ewe

Daryl Schafer.

Reserve Champion Hampshire Ewe

Ann Baroni.

SHROPSHIRE Ewe Lamb

1. Andrea Connell, 2. Sherry Connell, West Grove;

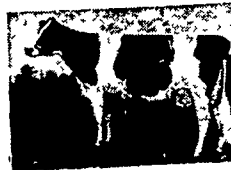
LATHROP'S

## COMPLETE DISPERSAL

Location: 5 miles East of Canton, Pa., Bradford Co., 20 miles West of Towanda, Pa., 2 miles South to Route 414 (Auction signs from Jay's Fruit Stand).

**FRIDAY, AUGUST 19, 1977**

10:00 A.M.



53 Head Hi-Grade Holstein

Dairy Cattle Sell 53

(ALL HOME RAISED)

30 young milking age animals - fresh cows, 6 due Sept., 3 Oct., balance Nov., Dec., Jan.; 4 Holstein 1st calf heifers due Sept., 5 Holstein bred heifers due Oct. to Mar., 2 Holstein open heifers, 8 Holstein started heifer calves, 1 Holstein service age bull. Above mentioned animals by son Whirlhill Kingpin and outstanding herd sire from Minnequa Farms. 2 Hereford open heifers.

Interstate Tested

Charts Sale Day

100% Calfhood Vaccinated

Pregnancy Checked

Catalogues

Machinery & Equipment

2 TRACTORS - JD 2510 diesel, JD 2020 diesel with No. 37 loader; N.H. 717 chopper with 9 knives, 1-row corn head, direct cut, pick up heads; N.H. 479 haybine, N.H. 273 baler with PTO thrower, N.H. blower, JD 25A combine with bin, JD 640 rake, JD 3-section harrow, Int. 3 pth. 3-bottom plows, Gehl, Dion forage wagons, JD spreader with hydraulic end gate, Oliver 10 ft. disc with transport wheels, Oliver 3 pth. corn planter, Grimm hay tedder, Ontario 16-hoe grain drill, Ford baler with new N.H. bale thrower with motor, 2 wagons with throw boxes, D.B. ensilage cutter, 1 flatbed wagon, JD fertilizer spreader, Smoker elevator, Skelton elevator, tractor comforter, Brillion crimper, 2 field sprayers, 1 trailer, one 3 pth. posthole digger, tractor 7 ft. front end angle blade, 2 sets tractor chains, barn fan, 2 gas engines, one 8 horse, one 2 horse; LPS tank, 48 in. sawmill saw, barn fogger, water troughs, 4 feed carts, 2 lawn mowers, Roto-tiller, 3 rolls snow fence, 20 milk cans, land roller, hydraulic cylinders, 200 ft. new hay rope, hay hoist, corn sheller, ice tongs, ice and crosscut saws, heavy duty tackle blocks, electric gas pump, locust and electric fence posts, electric and barbed wire, water pump, plus 60 other items not listed that will sell at this auction.

Horse Drawn Equipment

Int. plow, Int. cultivator, 1 horse cultivator, Int. corn harvester, lumber wagon & box, hay rake, dump scraper and whipple trees, horse collars.

Milk Equipment

DeLaval milker unit and pails.

Produce

4500 bales early cut good mix hay, sold in 3 lots; 12 acres standing corn, quantity second cutting and straw, 325 bushels ear corn.

SALE MGR. NOTE: Dairy cattle that will satisfy. Farm machinery, some pieces nearly new, rest had the best of care.

Terms: Cash or Good Check Sale Day.

Proper ID Required.

**Carl & Edna Lathrop,**

Owners

D.O. Rockwell & Associates,

Sale Managers

Troy, Pa.

Phone 717-297-3460

Lunch Available

by East Canton United Methodist Church

Aged Ewe  
1. Susan Hastings, Mimi Martin.

Ram Lamb

1. Ann Williams, 2. Billy MacCauley, 3. Janet Goodheer, 4. Ann Williams.

Progeny

1. Janet Goodheer, 2. Mimi Martin.

Pair

1. Billy MacCauley, 2. Janet Goodheer, 3. Ann Williams, 4. Meg Myers.

Champion Suffolk Ewe

Susan Hastings.

Reserve Champion Suffolk Ewe

Billy MacCauley.

Senior Blocking Contest

1. Ann Baroni, 2. Susan Hastings, 3. Fred Keys, 4. Martha Bates, 5. Jeff Baroni.

Junior Blocking Contest

1. Janet Goodheer, 2. Billy MacCauley, 3. Eddie Connell.

## Picnic planned

ELIZABETHTOWN, Pa. -

The Elizabethtown Pig and Rabbit Club is planning a club picnic for August 16, starting at 6 p.m. The picnic will be held at the Elizabethtown Park, in pavilion 2.

Members of the club and their families are invited to attend this event. Those participating should bring one cold dish, one hot dish, and place settings for their family. Drink will be provided by the club.

## CONSIGNMENT SALE

**WEDNESDAY, AUG. 17, 1977**

At 9:30 A.M.

Location: 1/2 mile North of Route 23 on North Maple Ave. in Leola, Lancaster Co., Pa. Watch for sale sign.

Tractors, Farm Machinery, including International 915 combine, cab, air, turbocharger and hydrostatic with 13 ft. grain platform, 4 row corn head. Excellent condition. Also, fast 5 cubic yard hydraulic carry-all. New Idea 2 row narrow corn picker with 12 roll husking bed; horse drawn implements, new tools & hardware. Positively no household goods.

We sell on Commission.

Hay & Straw Sale Every Wednesday.  
at 12:00 Noon by Harvey Z. Martin.

Sale by,

**David H. Good**

717-656-8911

Auctioneers - F. Snyder, R. Martin,

C. Wolgemuth, J. Fry, L. Horst

NOT RESPONSIBLE FOR ACCIDENTS.

Next Sale Wednesday, Sept. 7, 1977

## FEESER'S PRODUCTION SALE

**NEW HOLLAND FEEDER PIG SALE BARN NEW HOLLAND, PA.**

CATALOG AVAILABLE WRITE OR CALL FOR YOUR COPY

20 MARCH HAMP BOARS  
10 YORK GILTS    15 X-BRED GILTS  
10 FEB. YORK BOARS  
50 HAMP GILTS    10 BRED GILTS

ALL OPEN GILTS BREEDING AGE  
SCANOGRAM FIGURES AVAILABLE ON BOARS  
ALL PIGS HAVE BEEN TESTED NEGATIVE FOR PSEUDORABIS  
Auct. order is ABE DIFFENBACH    Field man is BILL POWELL

FRANK FEESER - TANEY TOWN MARYLAND 21787 301/848-6280

**productivity - soundness  
growing ability**

SALE TELEPHONE 717 354 4341    LUNCH AT NOON

**Saturday, Sept. 10, 1977  
1:00 p.m.**