

# Jed Hoffer has champion steer

By DIETER KRIEG  
LEBANON - Calling the Hereford in the ring "the most ideal type of steer - the kind we're looking for today," Dr. Robert Herr of Narvon, Lancaster County, declared Jed Hoffer's animal to be the grand champion of the show.

Herr, who heads the agriculture department at Eastern Lancaster County Schools, judged livestock shows here at the Lebanon Area Fair on Wednesday.

Hoffer's winning animal

was a Hereford heavyweight which appeared in a group Herr described as "a very strong class of steers." He went with the Hereford in first place, he explained, because it was a long, tall, completely uniform, and trim, steer which possessed a lot of refinement.

"There's no doubt in my mind that this is the Number One steer," Herr announced.

Jay Bomgardner showed another Hereford for second-place honors in the

heavyweight contest and subsequently was chosen as reserve grand champion.

In looking over the line-up of champions to determine which would get the nod for top honors, Herr said: "This is a very, very strong class as I look down the line." He complimented all three weight champions, conceding especially that the reserve champion was a "tremendously quartered steer also." Continuing, Herr announced: "We must consider what's waste and

what's meat ... I'm completely satisfied with the first-place animal."

Hoffer, 17, is the son of Mr. and Mrs. Lester Hoffer of Lebanon R1. He'll be

preparing his steer for future shows, including the big one at the Farm Show in January.

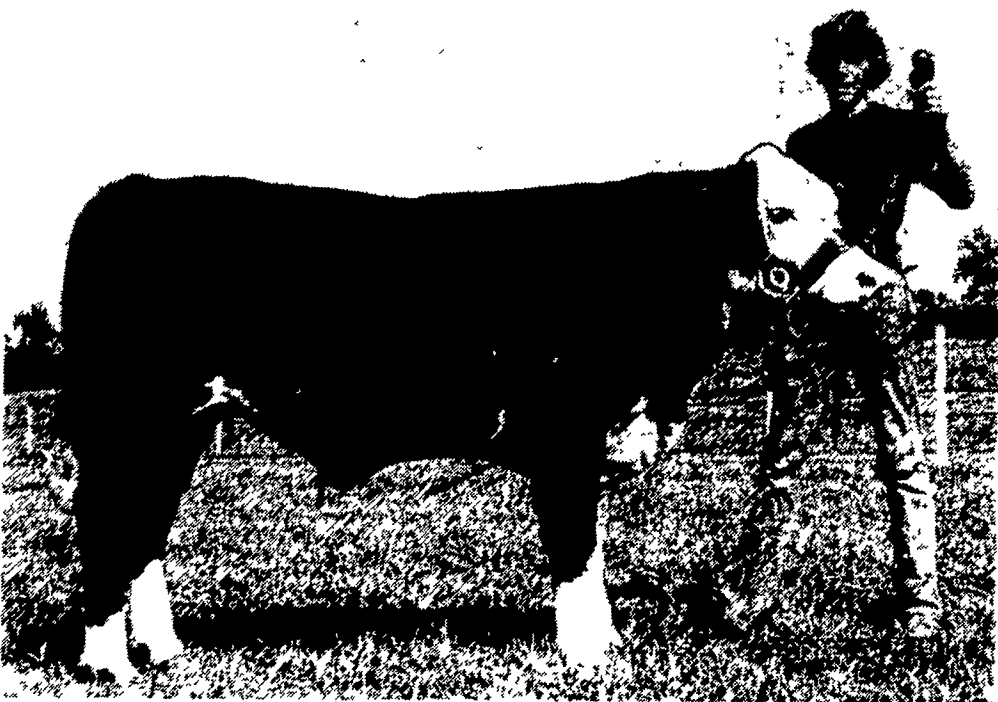
Hoffer's animal placed

first in the youth contest for 4-H and FFA members, and later in the open class. Bomgardner was second in

[Continued on Page 101]



The champion lightweight and mediumweight steers at the Lebanon Area Fair were exhibited by Edwin Houser and Brett Eberly, respectively. Houser, 10, is the son of Mr. and Mrs. Elwood Houser, Lebanon R5. Eberly's parents are Mr. and Mrs. Rael Eberly of Newmanstown R1.



Jed Hoffer and the grand champion steer at the Lebanon Area Fair.

## SOYBEAN ROASTING ON YOUR FARM

For peak feeding value have your soybeans roasted.  
(To kill toxic enzymes in raw soybeans.)

### MOLDY OR MUSTY CORN?

Have it restored to usable condition by roasting.

Roasted Soybeans and Roasted Soybean screenings for sale in small lots or trailer loads.

CUSTOM SOYBEAN ROASTING DONE IN PA. AND SURROUNDING STATES

**DALE L. SCHNUPP**

RD6, Lebanon, PA 17042

Phone 717-865-2534

## ATTENTION: Cattlemen

### For better daily gains at lower costs

#### Feed Bovotone 21

Higher feed costs and unstable market prices make it more important than ever for cattlemen to keep the cost of gain down. One sure way is to feed your own alfalfa haylage and Bovotone 21 from Vigortone.

Bovotone 21, in addition to delivering proper levels of important major minerals, trace elements and vitamins, contains abundant phosphorus to balance off the high calcium content of legume roughages.

Seldom will you need to feed any supplemental protein with a corn, haylage and Bovotone 21 program. Your cattle will do better, and your out-of-pocket costs will be cut dramatically.

#### Bovotone 110 and 111

Vigortone has two new pre-mixes for

feedlot cattle, Bovotone 110 and 111. Both contain high levels of major minerals, trace elements and vitamins as well as non-protein nitrogen (NPN). They are particularly suited for grain and grain silage rations needing supplemental protein.

Bovotone 111 also contains MGA\*, which produces a quieter bunch of heifers and promotes better daily gains.

#### See your Vigortone Serviceman now

If you're concerned about feeding costs, too, give your Vigortone serviceman a call. He has many up-to-date feeding programs that will help you save money.

You'll soon see why more cattlemen are feeding Vigortone — especially now.

\* Registered trade mark of the Upjohn Company for melengestrol acetate.

Over 150 Servicemen in PA alone!

Better rations cost less . . .

with Vigortone.

# VIGORTONE

## PRE-MIXES Especially Now!

50 warehouses—over 5400 servicemen  
3 manufacturing plants

#### FENNA

LEON B. HERSHEY  
Box 166 Paradise, PA  
717-442-4807

RON. L. HERSHEY  
R2 Gap, PA  
717-442-8573

JASON E. MILLER  
169 Strasburg Pike  
Lancaster, PA

WM. J. YODER  
23 N Bridge St  
Christiana, PA  
215-593-2101

RAY E. HILLARD, JR.  
RD 1, Box 220A Milroy, PA  
717-667-2421

ALVIN ESH  
Box 72 Intercourse, PA  
717-768-3128

H. MELVIN CHARLES  
R1 Washington Boro, PA  
717-684-5783

PETE CALDWELL  
R1 Windsor, PA  
717-246-1046

RALPH E. BRUNGART  
Loganton PA  
717-725-2355

ELAM G. HOOVER  
R1 New Holland, PA  
717-354-0432

PHILIP A. HAYES  
Oxford RD2  
215-932-8736

CHRISTIAN L. STOLTZFUS  
R2 Box 409 Elverson PA  
215-286-5995

CHESTER SOLTYS, JR.  
Spring City, PA  
215-948-3647

JAMES STUTZMAN SONS  
R3 Kutztown, PA  
215-683-7198  
215-682-2624

ELWIN REAM  
Hughesville, PA  
717-584-4085

SHERWOOD A. WITMER  
Box 138 Berrysburg, PA  
717-362-8823

PAUL L. KREIDER  
R2 Palmyra, PA  
717-964-3791

WILMER J. WEAVER  
R1 Fredericksburg, PA  
717-865-6710

C. GEORGE BOOK  
RD2, Box 80 Mifflintown, PA  
717-527-2228

RUSSELL FRY  
Duncannon, PA

PAUL BITTNER  
Germansville, PA  
215-767-7140



CLIFFORD GRUBE  
RD 1 Womelsdorf, PA  
717-933-8763

THOMAS R. WORTHINGTON  
RD3 Muncy, PA  
717-546-2313

#### DELMARVA

ROMAN YODER  
R1 Grantsville, MD  
301-895-5302

ERIC W. FOGG  
Rehobeth, Del  
302-227-3361

KAREN TAYLOR  
R3 Cambridge, MD  
301-228-3989

#### NEW JERSEY

ED FOGG  
Malvern, PA  
215-647-6818

C. OWEN FRANKLIN  
R3 Bridgeton, NJ  
609-451-5919

JOHN KLEMIUK  
Box 368 Hammonton, NJ  
609-561-0982

RAYMOND CANTI  
RD2 Phillipsburg, NJ  
201-859-1314

NED SHIMP  
Woodstown, NJ  
609-769-3481

LEE TICE  
R2 Elmer, NJ  
609-358-2622