

Chicken cook champ chosen

JACKSON, Miss.—A grandmother from Georgia, using a quick stir-fry method, cooked chicken with vegetables to win the \$10,000 top prize in the 1977 National Chicken Cooking Contest.

Mrs. Ann Costa of Atlanta prepared Chicken Ratatouille to win over 50 other contestants in the annual event held recently in Jackson, Miss.

Placing second, and winning \$4000, was Dr. Linda Louise Walsh, a psychology professor from Cedar Falls, Iowa. Her recipe for Chicken in Tomato-Wine Sauce won the approval of a panel of national food experts who served as judges.

Other winners shared a total of \$20,000 in prizes.

The contest, one of the nation's oldest cooking competitions, is sponsored by the National Broiler Council and the makers of Ac'cent flavor enhancer and the makers of Mazola corn oil. Ranges for the contest were furnished by White-Westinghouse. This year's hosts were members of the Mississippi Poultry Association.

Sweet smell of silage success

When something goes wrong in your silo you can smell it. But when you hedge your silage investment with silaGain all you'll smell is the sweet smell of silage success. Any silo any forage every time. Here's proof from university research.

CORN SILAGE		
Item	Control	silaGain
Energy Preservation	75%	88%
Energy Digestion	67%	70%
Protein Preservation	71%	84%
Protein Digestion	55%	59%
NFE Preservation	67%	80%
NFE Digestion	72%	74%

WHEAT SILAGE		
Item	Control	silaGain
Energy Preservation	85%	93%
Energy Digestion	61%	65%
Protein Preservation	72%	81%
Protein Digestion	58%	56%
NFE Preservation	61%	73%
NFE Digestion	53%	62%

SORGHUM SILAGE		
Item	Control	silaGain
Energy Preservation	75%	88%
Energy Digestion	67%	70%
Protein Preservation	71%	84%
Protein Digestion	55%	59%
NFE Preservation	67%	80%



silaGain

FORAGE INOCULANT

NuLabs Division
3930 S.W. Maradain Ave
Portland, Oregon 97201

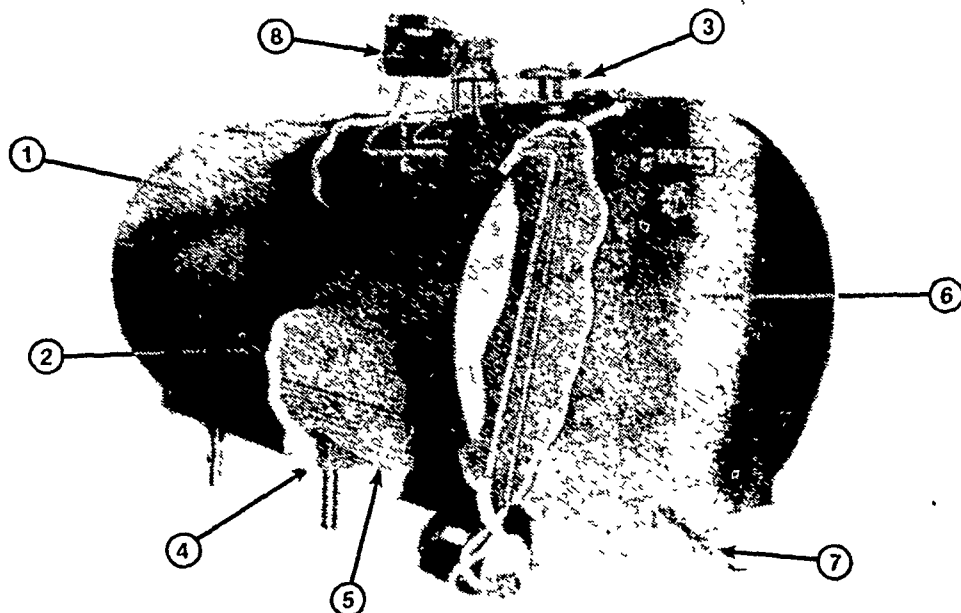
A B I O N I A I N C.

For Your Nearest Dealer Write or Phone

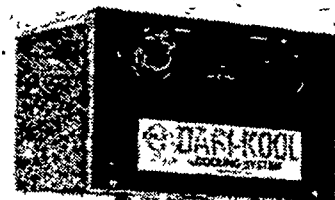


RD #1
Lewisberry, Pa 17339
717-766 0951

NEW FROM DARI-KOOL



1. Completely Stainless Steel Exterior
2. One-Piece Polyurethane Foam Insulation — 3 times more effective than other insulation types. Moisture resistant. Forms a solid bond between the inner and outer tank to increase the rigidity and structural strength of the cooler.
3. Clamped and Gasketed Manhole Cover
4. Legs and Structural Steel Support Channels Are Welded Together — Forms a SOLID support for the inner tank to insure the ultimate in tank calibration accuracy.
5. Thermal Barrier Between Inner Tank and Support Channel Assemblies — Insures No metal-to-metal contact to minimize heat transfer.
6. Built-In Washing System — Permanently attached stainless steel pump and lines.
7. Stainless Steel Milk Valve — Available in 2 in. or 2 in. x 1 1/2 in.
8. Dependable, 90° offset, Heavy-Duty Agitation



Built-In, Automatic 5-cycle Washing Cycle

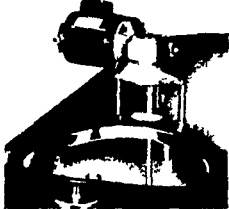
All washer and cooler controls are conveniently located in the wall mounted, water-proof, stainless steel washer control cabinet.

5-Cycles—completely Automatic

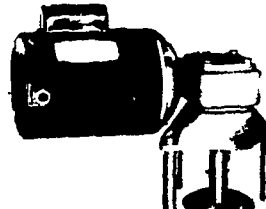
1. Cold Rinse—eliminates the need to manually rinse out the tank after the milk is removed, before washing.
2. Hot Rinse—to warm up the inner tank.
3. Hot Wash—to clean the inner tank.
4. Cold Rinse—to cool inner tank and remove soap water.
5. Cold Acid Rinse—to completely remove mineral deposits and/or sanitize interior.



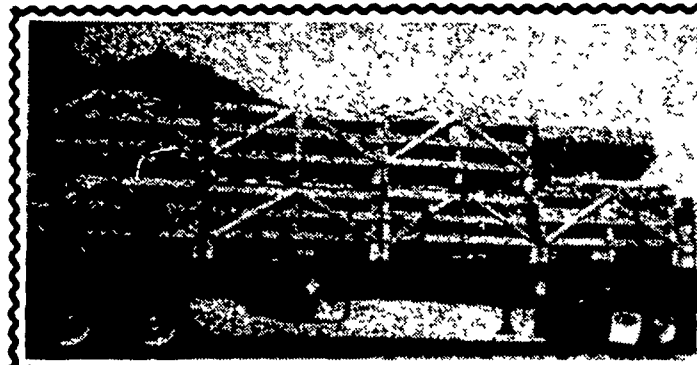
The washer pump is permanently attached and the stainless steel wash lines are built-in to eliminate lugging washer pumps and fighting a mass of hoses.



The built-in spray head eliminates the need to insert a washer spray-head every time you wash. Located in an optimum wash position, the high velocity spray head assures that every inch of the interior will be thoroughly cleaned and sanitized.



Heavy Duty Agitators
These agitators are built tough, to handle day-in, day-out agitation. The motors are thermally protected and the 90° offset, heavy-duty gearbox has a full 240 in/lb rating (3000-4000 gallon D-K coolers have (2) 440 m/lb agitators).



JUST ARRIVED ANOTHER LOAD OF MILKKEEPER MILK TANKS

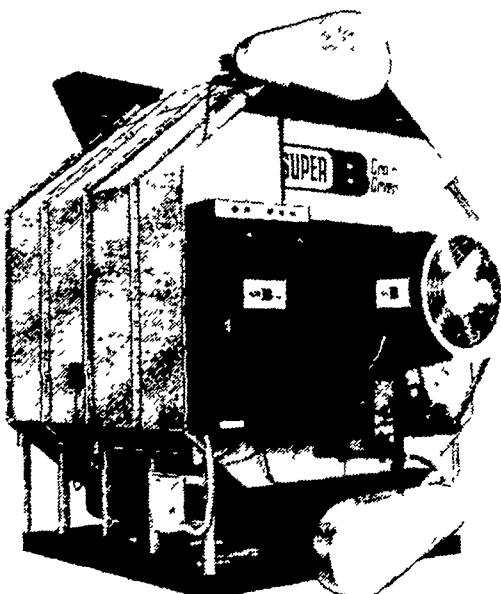
If in need of a 500 or 600 gal. tank, get our price before you buy a milk tank.

USED MILK TANKS

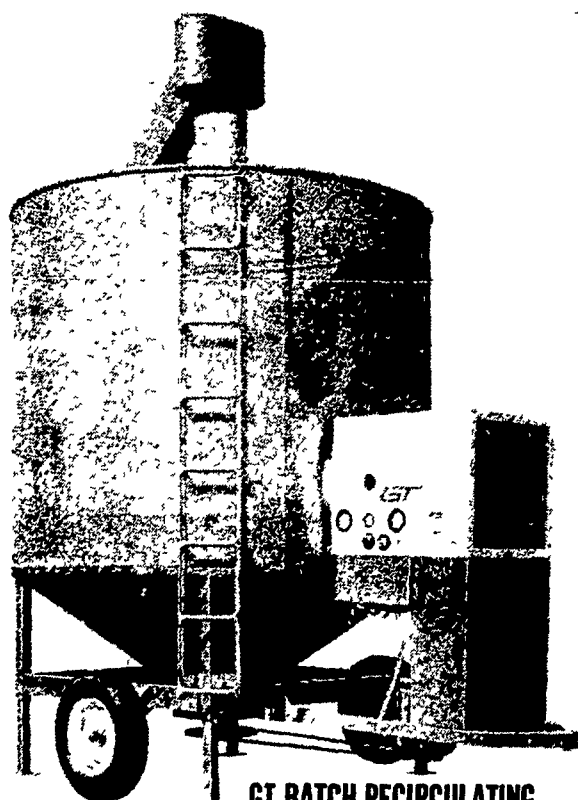
- 1 - 800 Gal. Dari-Kool Direct Expansion Bulk Tank w/automatic tank washer and 4 HP Compressor. Used 3 years.
- 1 - DKS 650 Gal. Dari-Kool Ice Bank. Late Model, A-1 Shape.

▶▶ GRAIN DRYING EQUIPMENT ◀◀

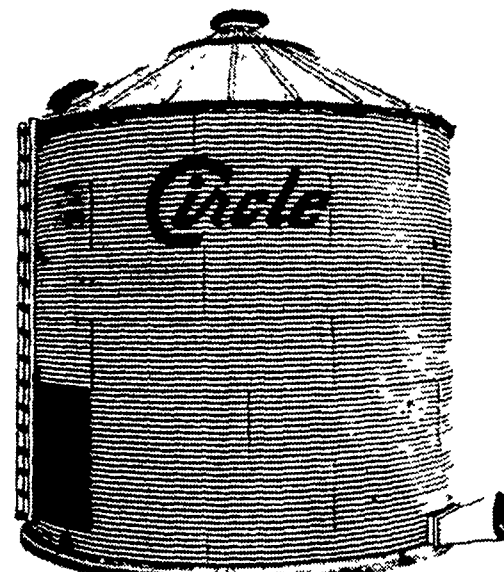
- Read Grain Bins
- Circle Grain Bins
- Grain Legs
- Grain Augers
- Continuous Flow Dryers
- Grain Cleaners
- GT Batch
- Recirculating Dryers



SUPER B AUTOMATED BATCH GRAIN DRYER



GT BATCH RECIRCULATING



CIRCLE GRAIN BINS FEED BINS

SALES — INSTALLATION — SERVICE

SHENK'S FARM SERVICE

501 E. Woods Drive

Lititz, Pa. 17543

Phone 717-626-1151

Bulk Tanks & Therma • Stor — After 5 P.M. Call Titus Burkholder 717-859-1620

Our Service Trucks Are Radio Dispatched
24.HR. SERVICE OFFERED