

# Hog Markets

## Lancaster Market

Lancaster Pa.  
Monday, July 25, 1977  
HOGS: Barrows and gilts mostly 2.00 lower.  
BARROWS AND GILTS: US 1-2 200-235 lb. 46.00-46.25; Few US 1 200-235 lb. 47.00-47.25; US 1-3 200-245 lb. 45.00-46.00; Late mainly 45.00-45.50; US 2-3 245-275 lb. 43.00-44.50.

## Vintage Hog

Saturday, July 23  
Reported 613 head.  
No. 1 210-240 lbs. 46.50-47.50; No. 2-3 210-240 lbs. 45.35-46.50; sows 32.00-34.75; boars 29.50-31.00; heavystraights 265-295 lbs. 37.25-42.00; lightweight 145-175 lbs. 38.25-40.00.  
Wednesday, July 27  
Reported 431 head.  
No. 1 210-240 lbs. 44.50-45.75; No. 2-3 210-240 lbs. 43.35-44.50; sows 33.00-35.00; boars 29.00-31.75; heavystraights 260 lbs. 42.35-43.00; lightweight 175-185 lbs. 35.00-37.00.

## Lancaster Auction

Lancaster, Pa  
Wednesday, July 27, 1977  
HOGS: Barrows and gilts mostly 1.00 lower.  
BARROWS AND GILTS: US 1-2 200-235 lb. 45.00-45.25; Few US 1 200-235 lb. 46.25-46.50; US 1-3 200-240 lb. 44.50-45.00; US 2-3 200-240 lb. 43.75-44.25.  
SOWS: US 1-3 400-550 lb. 32.50-33.50.

## New Holland Hog

Monday, July 25, 1977  
HOG AUCTION  
Today 1435  
Last Monday 1477  
TREND: Early sales barros and gilts 2.00-2.50 lower. Bulk of supply US 1-3; US 1 and US 1-2 scarce.  
BARROWS AND GILTS: Few US 1-2 200-230 lb. 46.35-47.00; 15 Head US 1 220-235 lb. 47.25-47.85; US 1-3 200-240 lb. 45.35-46.25; 190-200 lb. 45.00-45.60; Couple lots 180-190 lb. 40.85-43.00; US 2-3 235-255 lb. 44.25-45.00

## Indianapolis

Thursday, July 28, 1977  
HOGS: 2000 - Barrows & gilts moderately active, mostly 50 lower. US 1-3 200-240 lb. 43.00-43.50.  
Sows: Moderately active, 25 to mostly 50 lower. US 1-3 300-600 lb. 36.50-37.50.

## Peoria Hog Auction

Thursday, July 28, 1977  
HOGS: 2800.  
Barrows & gilts fairly active, opening weak to mostly 50 lower.  
US 1-2 210-240 lb. 43.00-43.50, about 120 head 43.75; US 1-3 200-250 lb. 42.50-43.00.  
Sows: Weak. US 1-3 350-650 lb. 37.00-37.50.

## New Holland Feeder Pig

Wednesday July 27, 1977  
Feeder Pigs  
Today 1357  
Last Wednesday 834  
TREND: Compared to last Wednesday feeder pigs mostly 10.00-15.00 lower. All prices on a per hundred weight basis. US 1-2 26-37 lb. 84.00-88.00; 38-47 lb. 75.00-94.00; 55-98 lb. 56.00-70.00. US 2-3 29-52 lb. 60.00-90.00; 53-79 lb. 43.00-69.00. US 3 26-55 lb. 40.00-66.00. Utility 23-53 lb. 44.50-63.00.

## St. Louis Hog Market

Thursday, July 28, 1977  
HOGS: 5500  
Barrows & gilts moderately active, steady to 25 lower than Wednesday's general trade.  
US 1-2 200-240 lb. 42.75-43.00; US 1-3 200-270 lb. 42.25-42.75.  
Sows: 75-1.50 lower. US 1-3 300-450 lb. 35.00-36.00.

## Lancaster Grain

Thursday, July 29  
These prices are made up of the average prices quoted by a number of participating area feed and grain concerns. It should be noted, however, that not every dealer or broker handles each accomodity. All prices are per bushel except ear corn and soybean meal where are per ton.

The average prices quoted Thursday, July 29 are as follows:

	Bid	Offered
Ear Corn	48.00	58.00
Shelled Corn	2.08	2.25
Barley	1.65	1.87
Oats		
Local	1.27	1.42½
Western	1.61	1.78½
Wheat	2.21	
Soybeans	5.75	
Soybean Meal	230.00	
Rye	1.70	

+Bid is the price the dealer will buy from the farmer delivered to the mill. Sell is the price the dealer will sell for at his mill.

## Valley Livestock

Valley Stockyards  
Athens, Pa.  
Monday, July 25, 1977

Reported receipts of 81 calves, 122 cows, 53 hogs, 33 heifers, 12 sheep, 12 lambs, 28 bulls, and 19 steers. Cattle market higher than last week and calf market steady.

Veals 35.00-40.50; hobs 90 to 110 lbs. 30.00-32.00; hobs, 80 lbs. and down 22.00-27.00; grassers and feeders 24.00-28.00; lambs 38.00-45.00; sheep 12.00-20.00; hogs, 200 to 250 lbs. 43.00-45.00; sows 28.00-35.00; boars 23.00-26.00; pigs 10.00-31.00; heifers 26.00-31.75; steers, good 34.00-35.00; steers, common 28.00-32.00; bulls 28.00-34.50; cows, good 26.50-28.00; cows, medium 23.00-25.00; cows, poor or small 16.00-21.50; horses 60.00-130.00; ponies 15.00-50.00 goats 12.00-40.00.

# Futures Trading

(Closing Bids as of Thursday, July 21)

	Chicago Cattle	Chicago Hogs	New York Maine Potatoes	Chicago Fresh Eggs
Aug.	39.25	40.50		
Sept.				57.55
Oct.	38.20	34.75		54.50
Nov.			4.71	58.00
Dec.	38.45	34.85		59.70
Feb.	38.30	34.15		
March			5.60	
April			6.05	
May			6.85	

Trend-Cattle are lower, Hogs are mixed, Potatoes are stronger and eggs are higher.  
Market Provided by Commodity Department  
Reynolds Securities, Inc.

# CHICAGO GRAIN FUTURES

(Closing Bids as of Thursday, July 21)

	Wheat	Corn	Soybean	Soybean Meal
Aug.			6.15½	158.60
Sept.	2.25	1.99		157.70
Oct.				151.00
Nov.			5.68½	
Dec.	2.35	2.06		152.80
Jan.			5.75	154.50
March	2.42¾	2.13½	5.82	157.50
May	2.48	2.18		

Trend-Corn is lower, Wheat is lower, Soybeans are lower and Soybean Meal is lower.  
Market Provided by Commodity Department  
Reynolds Securities, Inc.

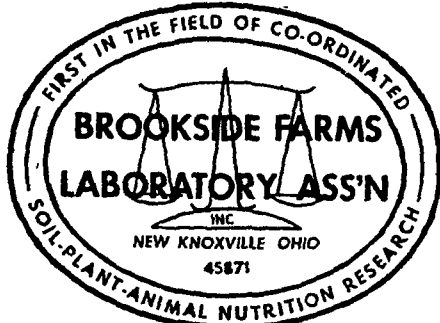
## HAY, STRAW & CORN

-SALE-

Every Friday at 12 Noon.

Green Dragon Market & Auction

RD No. 4 Ephrata, Pa. 717-733-2334  
1 mile North of Ephrata on N. State St.



National Reputation - Local Service

## CONTACT:

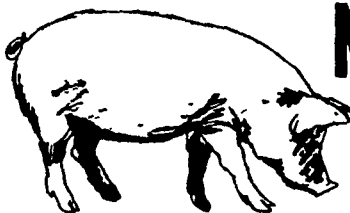
JOHN CAMPBELL  
Atglen, PA  
(215) 593-5529

GARY MCGEE  
Spring Run, PA  
(717) 349-2340

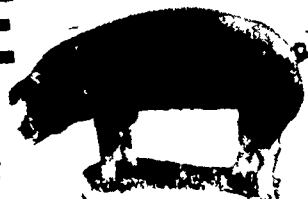
DAN DERR  
Conowingo, MD.  
(301) 378-3280

# ATTENTION CATTLE FEEDERS

Do you want to make buying your stockers and feeders easy. It can be very simple. Just call and give us your order. All orders filled to your exact specifications. Call us anytime. We can be very helpful.



## NEXT FEEDER PIG SALE TUESDAY, AUG. 2 - 1 P.M.



Consign all your feeder pigs to Walter M. Dunlap & Sons where they will be handled by a capable and experienced staff.

Feeder pigs received from 6 A.M. to 11 A.M.

## WALTER M. DUNLAP & SONS

### LANCASTER STOCK YARDS

Consignors can get state tags at our office, thereby saving 25c marketing expense

For Further Information, Call 717-397-5136

# U.S. Inspected Livestock Slaughter

Estimated Daily Livestock Slaughter Under Federal Inspection

	Cattle	Hogs	Sheep
Week to date	567,000	1,076,000	98,000
Same period last week	563,000	966,000	95,000
Same period last year	574,000	1,017,000	98,000

## J.M.HOOBER INC.

SINCE 1895

LANCASTER STOCK YARDS

If you want your hard-earned moneys worth in quality feeder cattle and if you want expert handling of your market cattle then we should get to know each other. Please feel free to call us at any time for up-to-the-minute market information. Remember - when it comes to livestock - J. M. Hooper is Number 1.

OUR BUSINESS IS MORE THAN LIVESTOCK  
OUR BUSINESS IS SERVICE TO YOU

FOR TOP MARKET DOLLARS

J. M. Hooper Steer Division  
Ph: (717) 397-6191, 569-2084

Please Call Us Soon  
J.M. Hooper Hog,  
Calf & Sheep Division  
Ph: (717) 397-6191, 626-5659