

# Livestock market and auction news

## Middleburg Cattle

**Middleburg, Pa. July 19, 1977**  
**CATTLE 320.** Compared with last Tuesday's market, slaughter steers grading Good through Prime 50 cents to \$1 lower. Slaughter cows 25 cents to \$1.50 lower. High Choice & Prime No. 2-4 1050-1300 lbs. slaughter steers 38.50-40.00, one at 41.25, Choice No. 2-4 950-1200 lbs. 37.00-39.00, Good 34.50-36.75, few Standard 31.00-34.75. Few Choice No. 1 slaughter heifers 36.85-40.00. Utility & High Dressing Cutter slaughter cows 23.00-25.85, couple 26.85, Cutters 23.00-25.00, Canners 21.25-23.00, Shells down to 15.00. Choice slaughter bullocks 35.00-38.35, few Good 33.85-34.85, few Standard 31.00-33.50, few Utility 29.75-31.00. Few Yield Grade No. 1 1200-1600 lbs. slaughter bulls 32.85-34.85.  
**CALVES 239.** Vealers \$4 to \$8 lower. Choice vealers 43.00-53.00, Good 37.00-42.00, few Standard & Good 110-130 lbs. 30.00-35.00, 90-110 lbs.

28.00-33.00, Standard 70-85 lbs. 22.00-28.00, Utility 59-75 lbs. 10.00-20.00. Farm calves, holstein bulls 90-120 lbs. 30.00-40.00.

**HOGS 476.** (Monday, July 18, 1977). Barrows & Gilts steady to 75 cents higher. US No. 1-2 200-230 lbs. barrows & gilts 48.00-49.80, No. 1-3 200-240 lbs. 47.00-48.20, No. 2-3 210-250 lbs. 46.00-47.00, No. 2-4 300-350 lbs. 36.00-40.50. US No. 1-3 400-575 lbs. sows 35.00-37.00, No. 2-3 300-500 lbs. 29.50-32.25. Boars 24.25-28.10.

**FEEDER PIGS 99.** US No. 1-3 20-30 lbs. feeder pigs 16.00-25.50 per head. No. 1-3 40-60 lbs. 33.00-39.50 per head.

**SHEEP 16.** Slaughter ewes 10.50-13.50.

## Lebanon Valley

**Fredericksburg, Pa. July 19, 1977**

**CATTLE 293.** Compared with last Tuesday's market, slaughter steers 25 cents to 75 cents higher. Slaughter heifers highly uneven. Slaughter cows steady to weak, spots 50 cents lower. Few High Choice & Prime

slaughter steers 39.85-41.25, Choice 38.00-39.85, few to 41.00, Good 35.00-38.35, Standard 33.75-34.85, few Utility & Low Standard 28.85-30.50. Choice slaughter heifers 33.60-36.85, Good 33.10-37.00, few Standard 30.00-32.85, few Utility 25.00-28.25. Utility & High Sreasing Cutter slaughter cows 26.00-27.35, few to 27.60, Cutters 25.00-26.85, Canners 22.00-24.60, Shells down to 15.75. Few Good slaughter bullocks 32.50-33.75, Standard 30.75-32.85. One Yield Grade No. 1 2250 lbs. slaughter bull at 33.85.

**CALVES 249.** Vealers \$2 to \$6.50 lower. Few Choice vealers 48.00-52.00, Good 39.50-42.50, few to 47.50, Standard & Good 110-130 lbs. 35.00-42.00, 90-115 lbs. 28.50-35.00, Standard 70-110 100 lbs. 23.50-30.00, Utility 60-115 lbs. 10.00-24.00. Farm calves, holstein bulls 80-125 lbs. 46.00-52.50, few to 55.00.

**HOGS 246.** Barrows & Gilts mostly steady. US No. 1-2 200-230 lbs. barrows & gilts 47.75-48.35, No. 1-3 190-225 lbs. 47.50-47.85, few No. 2-3 185-255 lbs. 46.10-47.10, few No. 1-3 160-190 lbs. 40.00-44.75. US No. 1-3 305-560 lbs. sows 34.00-35.00, No. 2-3 400-605 lbs. 33.50-34.25, few 28.25. Couple Boars 25.60 and 26.50.

**FEEDER PIGS 23.** US No. 1-3 20-40 lbs. feeder pigs 22.00-30.00 per head, one lot Utility 30 lbs. 18.50 per head.

**SHEEP 16.** Good & Choice 75-105 lbs. spring slaughter lambs 36.00-42.50. Few slaughter ewes 10.00-13.00.

## Baltimore USDA

July 18, 1977

**CATTLE 500:** Slaughter steers and heifers 50 cents lower, cows 1.00 higher, bulls steady.

**SLAUGHTER STEERS** Choice 2-4 950-1200 lbs. 37.50-39.00; Good 2-3 34.00-36.00; Good Holsteins 29.00-32.50; Standard 26.00-29.00.

**SLAUGHTER HEIFERS:** Choice 2-4 825-1100 lbs. 33.00-35.60; Good and Choice 2-4 31.50-33.00; Good 2-3 28.25-29.50.

**COWS:** Utility 2-3 23.00-27.35; Cutter 21.50-22.60.

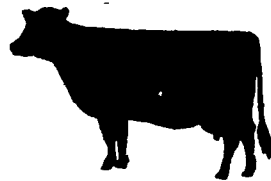
**BULLS:** Yield Grade 1-2 1000-1700 lbs. 30.50-35.35; Individual 2175 lb. 39.75.

**HOGS: 900 -** Compared with Thursday, Barrows and Gilts steady to 25 cents higher. U.S. 1-3 200-260 lbs. 47.50-47.75 early, 47.75-48.25 late.

**SOWS:** steady U.S. 1-3 300-600 lbs. 34.00-35.00.

**VEAL AND CALF AUCTION 200:** Prime vealers 200-250 lbs. 44.00; Choice 150-300 lbs. 32.00-41.00; Good 27.00-33.00; Good and Choice 70-90 lbs. 22.00-27.00; 90-125 lbs. 27.00-33.50. Choice calves 300-375 lbs. 30.00-32.50; Good 300-350 lbs. 25.00-29.50.

**SHEEP AUCTION:** Prime and Choice spring slaughter lambs 76-112 lbs. 40.00-43.50.



## Valley Livestock

**Valley Stockyards Athens, Pa. Monday, July 18**

Reported receipts of 360 calves, 105 cows, 115 hogs, 35 heifers, 10 sheep, 9 lambs, 17 bulls, and 16 steers. Cattle market easier and calf market easier.

Veals 38.00-50.50; bobs, 90 to 110 lbs. 32.00 to 34.00; bobs, 80 lbs. and down, 25.00-30.00; grassers and feeders 22.00-

28.00; lambs 30.00-49.00; sheep 10.00-16.00; hogs, 200 to 250 lbs. 45.00-47.75; sows 30.00-35.00; boars 25.00-27.00; pigs 8.00-30.00; heifers 24.00-31.50; steers, good 34.00-36.50; steers, common 28.00-32.00; bulls 27.00-35.75; cows, good 25.00-28.75; cows, medium 22.00-24.00; cows, poor or small 18.00-21.00; horses 60.00-100.00; ponies 12.00-25.00; goats 10.00-30.00.

## New Holland Dairy

**New Holland Sales Stables Wednesday, July 20**

Reported receipts of 93 cows, 5 heifers, and 3 bulls. Market lower than last week's market.

Load of York Co. springers 540-670; load of Pa. fresh 625-960, springers 620-700; load of Pa. fresh 545-735, springers 600-745; load of Pa. fresh 540-680; load of Butler Co. springers 500-540. Local cows 425-875; springing heifers 510-625; bulls 355-400.

## New Holland Horse

**New Holland Sales Stables Monday, July 18**

Reported receipts of 338 head of horses, mules, and ponies. Market lower than last week's market.

Local driving horses 175-675; riding horses 150-300; better horses 325-625; lightweight killers 18-20; heavyweight killers 26-28; mares 15-60; colts 10-25; geldings 15-50; larger ponies 75-160.

## Carlisle Auction

**Carlisle, Pa. July 19, 1977**

**CATTLE 207.** Compared with last Tuesday's market; Choice slaughter steers 38.60-40.10, Good 34.00-37.60, Standard 27.00-34.50. Good slaughter heifers 31.35-34.35, Standard 28.00-30.50, Utility 23.00-27.75. Utility & High Dressing Cutter slaughter cows 23.85-25.00, Commercial 22.00-24.00, Cutters 20.75-22.50, Canners 18.00-20.50, Shells down to 15.00. Few Good slaughter bullocks 34.10, Standard 31.00-31.50.

**CALVES 149.** Standard & Good 110-130 lbs. vealers 37.00-45.50, 90-110 lbs. 28.00-35.50, Standard 70-90 lbs. 20.50-29.00.

**HOGS 302.** US No. 1-2 190-30 lbs. barrows & gilts 46.85-47.85, No. 1-3 200-240 lbs. 44.75-47.00, No. 2-3 200-250 lbs. 41.00-44.00. Boars 20.00-23.00.

**FEEDER PIGS 349.** US No. 1-3 30-45 lbs. feeder pigs 23.50-28.00 per head, No. 1-3 30-60 lbs. 29.00-33.50.

**SHEEP 24.** Good spring slaughter lambs 42.00-44.45, Utility 32.50-37.00.

## READ LANCASTER FARMING FOR FULL MARKET REPORTS

### L & M FUR & WOOLEN ENTERPRISE



Quality Electrified Mountons & Furs Tannery Direct Dist. - Wholesale & Retail Check our Quality, Price & Services!

- Woolen Hosp. Pads - Natural & All Colors
- Pa Largest Selection of Woolen Products
- Sheepskin Coats at Reasonable Prices
- See Us At Meadowbrook Market in Leola

117 W. Summit St., Mohnton, Pa. 215-777-2465

Hours: Mon - Fri. 9-8:30; Sat. 9-5

### VINTAGE SALES STABLES, INC.

10 mi. East of Lancaster on Rt. 30 Box 100, Paradise, PA 717-442-4181 or 768-8204

### EVERY THURSDAY AT 12 NOON Hay, Straw & Grain Sale

We have plenty of good buyers each week. We need consigners.

Contact:

L. Robert Frame, manager

### GREEN DRAGON LIVESTOCK SALES

1 mile North of Ephrata, PA



### COWS COWS COWS BUYERS FROM 3 STATES

Regular consignments from Ray Kyper, Bob Kennedy, Dale Brewer and Ed Stover plus local consigners.

Lots of good Northern Feeders and Stockers

### SALE EVERY FRIDAY

Bulls, Steers Slaughter Cows Lambs and veal calves

11 00 A.M. - Beef Sale Stockers & Feeders 200 to 250 each week

12 30 P.M. - Dairy Cows

2 00 P.M. - Cattle & Veal Sale

For Special Sales and Herd Dispersals on the farm or at our barn or other market information call Office 717-733-2444

Walter H. Risser, Proprietor

REMEMBER US when you purchase cattle in the South... call us collect from the sale. HAPPY TO SERVE YOU!!

### S. K. SHOTZBERGER, INC.

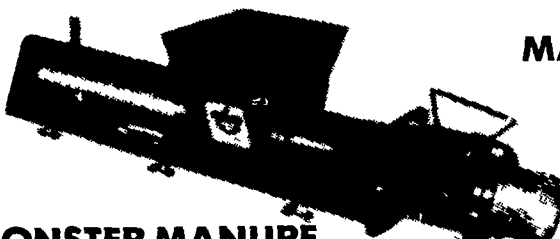
#### LIVESTOCK TRANSPORTATION

Gene Zwally, President Marvin Johns, Secy.-Treasurer

P.O. Box 925, Lancaster, Pa. 17604

Phone: (717) 393-4641 (day or night)

## MATERIAL HANDLING EQUIPMENT



### MONSTER MANURE TRANSFER PUMP

Do you need manure storage during growing season?

- Without fly problems
- Without losing valuable nutrients
- Without odors

Do you want daily hauling in cold weather?

- Without freezing of equipment
- Without starting tractors every day
- Without additional investment in hauling equipment

Handles all types of manure, from liquid to box stall manure

### ACORN MANURE HANDLING EQUIPMENT



### MARK II ALLEY SCRAPER

- Automatic scraping chores in free-stall, farrowing houses or chicken houses
- Dependable, scrapes up to six times per day with safety cut-off
- Low-cost cable operated adaptable to existing installations with no channels to cut eliminates dangerous gases in slatted floor buildings



TRUE ALTERNATORS CLEANERS & SANITIZERS

CONSULTING

LAYOUT

MODERNIZING

PROMPT SERVICE

SERVING LANCASTER, CHESTER AND DECEL COUNTIES

COME IN, WRITE OR PHONE FOR FULL INFORMATION

## W & J DAIRY SALES

R.D. 2, OXFORD, PA. 19363

CALL BILL GUHL

717-529-2569