

# Livestock market and auction news

Dewart Auction

## Pa. Auction Summary

Harrisburg, Pa.  
July 15, 1977

**CATTLE** 10,536. Compared with 6785 head last week, and 8846 head a year ago. Compared with last week's market, slaughter steers steady to \$1 lower, spots to \$2.50 lower. Slaughter heifers mostly \$1 lower. Slaughter cows \$1.50 to \$2 lower, spots to \$3 lower. Slaughter bullocks and bulls \$1 to \$2 lower. **STEERS:** High Choice and Prime 3-4, 39.50-41.10, Choice 2-4 37.50-41.35, Good 34.50-38.00, Standard 30.00-35.00, few Utility 27.50-32.00. **HEIFERS:** Choice 34.00-38.00, few to 40.00, Good 31.00-36.00, Standard 28.00-31.50, few Utility 24.00-28.00. **COWS:** Utility and High Dressing Cutter 23.50-27.85, few to 29.00, Cutters 22.75-26.00, Canners 20.00-24.50, Shells down to 15.00. **BULLOCKS:** Choice 34.00-38.50, Good 32.00-35.50, few Standard 29.00-32.00, few Utility 27.50-30.50. **BULLS:** Yield Grade No. 1, 1000-1900 lbs. 32.00-35.50, few to 38.00, Yield Grade No. 2, 900-1500 lbs. 29.00-34.00. **FARM CALVES:** Good and Choice 300-550 lbs. steers 36.00-42.50, Good 300-700 lbs. 30.00-36.50, Medium 300-750 lbs. 25.00-30.00. Good and Choice 300-650 lbs. heifers 25.00-35.00, Medium 300-700 lbs. 20.00-25.50. Medium and Good 300-800 lbs. bulls 22.00-31.00. **CALVES** 5826. Compared with 3845 head last week, and 4759 head a year ago. Vealers \$1 to \$4 lower. **VEALERS:** Few Prime 55.00-68.00, Choice 49.00-58.00, Good 41.00-50.00.

## Chambersburg Auction

Chambersburg, Pa.  
July 4, 1977

**CATTLE** 355. Compared with last Thursday's market, slaughter steers grading Good and Choice weak to 75 cents lower. Slaughter cows \$2 to 2.75 lower. Choice 2-4, 1050-1250 lbs. slaughter steers 38.10-39.75, Good 35.00-37.85, few Standard 32.10-36.10. Few Choice slaughter heifers 35.00-37.10, few Good 32.25-34.75, few Standard 29.25-31.50. Utility and High Dressing Cutter slaughter cows 24.75-27.10, few to 28.00, Cutters 24.10-26.10, Canners 21.50-24.25, Shells down to 16.50. Few Utility slaughter bullocks 27.75-30.60. Yield Grade No. 1, 1200-1600 lbs. slaughter bulls 33.00-35.00. Few Medium and Good 250-500 lbs. feeder bulls 28.50-35.00. **CALVES** 770. Vealers grading Choice \$3 to \$4 lower, Standard and Good \$6 to \$8 lower. Few Prime vealers 59.50-61.00, Choice 48.00-55.00, Good 37.00-46.00, Standard and Good 110-130 lbs. 31.00-38.00, 90-110 lbs. 28.00-32.00, Standard 70-85 lbs. 22.00-29.00, Utility 50-80 lbs. 10.00-20.00. Holstein bulls 90-120 lbs. 30.00-55.00; Holstein heifers 85-110 lbs. 25.00-35.00, couple to 40.00. Good and Choice 125-275 lbs. slaughter calves 34.00-40.00, Standard 28.00-34.00. **HOGS** 89. Barrows and gilts \$1.50 to \$2 lower. US No. 1-2 215-230 lbs. barrows and gilts 47.60-48.50, No. 1-3 200-235 lbs. 46.60-47.60. Few US No. 1-3 300-475 lbs. sows 33.00-36.00. Boars 23 75-29 00

Standard and Good 110-135 lbs. 34.00-45.00, 90-110 lbs. 28.00-38.00, Standard 70-90 lbs. 24.00-35.00, Utility 55-110 lbs. 19.00-28.00. **FARM CALVES:** Holstein bulls 90-130 lbs. 35.00-51.00, few to 55.00.

**HOGS** 7615. Compared with 4629 head last week, and 8172 head a year ago. Barrows and gilts 50 cents to \$1.25 lower. barrows 9 gilts: US No. 1-2 200-240 lbs. 47.75-49.00, few to 50.00, No. 1-3 200-250 lbs. 46.00-48.00, No. 2-3 290-260 lbs. 43.00-47.25, few No. 2-4 250-325 lbs. 40.00-44.00, few No. 1-3 140-190 lbs. 35.00-42.00. **SOWS UNEVEN.** US No. 1-3 390-550 lbs. 33.00-37.50, few No. 2-3 300-650 lbs. 27.00-33.00. Boars 21.00-29.00. **FEEDER PIGS** 2051. Compared with 1513 head last week, and 1606 head a year ago. Feeder pigs were uneven. US No. 1-3 20-35 lbs. 15.00-26.00 per head, No. 1-3 35-50 lbs. 25.00-39.00, No. 1-3 50-80 lbs. 33.00-42.00, few to 56.00, Utility 20-50 lbs. 15.00-25.00, per head.

**GRADED FEEDER PIGS** 1225 HEAD PER HUNDREDWEIGHT BASIS. Compared with 2524 head last week; Feeder pigs highly uneven. US No. 1-2 35-50 lbs. 85.00-95.00, 50-60 lbs. 74.00-88.00; No. 2-3 25-30 lbs. 82.00-91.00, lot 38 lbs. at 96.00, 50-75 lbs. 66.00-75.50. **SHEEP** 941. Compared with 212 head last week, and 821 head a year ago. Spring slaughter lambs steady to \$1 higher. **LAMBS:** Choice 65-110 lbs. 45.00-52.00, few 59.50, Good 40-100 lbs. 35.00-47.00, Utility 40-65 lbs. 30.00-35.00. Slaughter ewes 5.00-16.50.

## Martinsburg Auction

Martinsburg, Pa.

July 18, 1977

**CATTLE** 312. Compared with last Monday's market; High Choice & Prime slaughter steers 38.50-41.00, Choice 37.50-40.00, Good 34.50-37.00, Standard 32.00-35.00, Utility 27.00-30.00. Choice slaughter heifers 34.50-37.00, Good 32.00-34.00, Standard 28.50-32.00. Utility 23.50-25.00. Utility & High Dressing Cutter slaughter cows 25.00-27.00, few to 28.00, Cutters 23.00-25.00, Canners 21.00-24.50, Shells down to 17.00. Choice slaughter bullocks 34.00-36.00, Good 32.00-35.00, Standard 31.00-34.00. Yield Grade No. 1000-2000 lbs. slaughter bulls 34.00-37.00; yield grade No. 2 900-1600 lbs. 31.50-34.50. Few Medium & Good 400-650 lbs. feeder steers 26.50-34.50; few Medium & Good 400-650 lbs. feeder heifers 21.00-26.00;

few Medium & Good 400-650 lbs. feeder bulls 22.00-30.00.

**CALVES** 479. Choice vealers 50.00-58.00, Good 42.00-50.00, Standard & Good 110-130 lbs. 28.00-32.00, 90-110 lbs. 26.50-30.00, Standard 70-90 lbs. 24.00-29.00. Farm calves, holstein bulls 90-120 lbs. 33.00-51.00.

**HOGS** 483. US No. 1-2 200-240 lbs. barrows & gilts 47.50-48.50, No. 1-3 200-250 lbs. 46.50-48.00, No. 2-3 190-230 lbs. 45.50-46.50, No. 1-3 160-190 lbs. 37.00-42.00. US No. 1-3 300-500 lbs. sows 33.00-35.0, No. 2-3 300-650 lbs. 30.00-33.00. Boars 21.50-25.00.

**FEEDER PIGS** 69. US No. 1-3 20-35 lbs. feeder pigs 18.00-24.00 per head, No. 1-3 35-50 lbs. 24.00-38.00 per head.

**SHEEP** 11. Not enough of any one grade to establish a market.

## Danville Auction

Danville, Pa.  
July 18, 1977

**STEERS:** High Choice and Prime 38.00-39.50, Good to Choice 35.00-37.60; Standard to Good 30.00-34.00.

**HEIFERS:** Good to Choice 32.00-34.00.

**BULLS:** 28.00-33.00.

**COWS:** High Choice to

Prime 25.50-27.00; Good to Standard 24.00-25.25; Utility 22.00-23.85.

**CALVES:** High to Choice 40.00-45.00; Good to Choice 32.00-40.00.

**HOGS:** 47.30-49.40.

**SOWS:** 31.50-36.00.

**BOARS:** 24.00-28.00.

## HAY, STRAW AND EAR CORN SALE

Every Wednesday at 12 Noon  
At David Good's Farm Equipment Sale  
North Maple Ave., Leola, PA

### HARVEY Z. MARTIN

Home Phone 215-445-5303  
We Buy On Orders  
Bus. Phone Wed. Only  
717-656-7270

We also buy hay and straw privately.

Dewart, Pa.

July 18, 1977

**CATTLE** 203. Compared with last Monday's market, slaughter steers grading Good & Choice uneven, mostly steady to 25 cents lower. Slaughter cows \$1 to \$2 lower. Choice No. 2-4 975-1250 lbs. slaughter steers 37.00-39.00, few to 40.60, Good 34.75-37.10, few Utility 30.25-33.25. Few Good slaughter heifers 32.25-34.50. Utility & High Dressing Cutter slaughter cows 25.00-27.60, one at 29.60, Cutters 24.50-26.50, Canners 21.00-24.00, Shells down to 19.25. Few Good slaughter bullocks 34.25-34.75. Few Yield Grade No.1 1170-1620 lbs. slaughter bulls 29.60-35.60. Few Good 500-800 lbs. feeder steers 33.75-35.50.

**CALVES** 210. Vealers grading Good & Choice \$2 to \$5 lower; Standard & Good 70-110 lbs. steady to \$3 lower. Choice vealers 45.00-52.00, one at 59.00, Good 38.00-45.00, few Standard & Good 110-130 lbs. 35.00-40.00, 90-110 lbs. 32.00-38.00, Standard 70-85 lbs. 30.00-35.00, Utility 50-75 lbs. 10.00-25.00. Farm calves,

holstein bulls 90-120 lb 35.00-49.00.

**HOGS** 396. Barrows & Gilts strong to \$1 higher. US No. 1-2 200-225 lbs. barrows & gilts 49.70-50.10, No. 1-3 190-230 lbs. 48.10-49.60, No. 2-3 185-250 lbs. 47.10-48.00. US No. 1-3 350-600 lbs. sows 34.00-37.00, No. 2-3 450-650 lbs. 29.75-33.50. Boars 24.00-28.00.

**FEEDER PIGS** 260. US No. 1-3 20-35 lbs. feeder pigs 20.00-30.00 per head, No. 1-3 40-60 lbs. 33.00-41.00 per head, few lots Utility 75-115 lbs. 37.50-39.75 cwt.

**SHEEP** 2. Couple Choice 80 lbs. spring slaughter lambs 50.00 and 52.00.

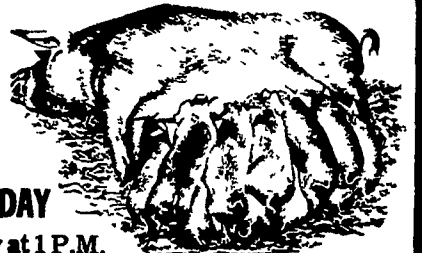
## TRY A CLASSIFIED

2070 HARVESTORE  
For Sale  
White Roof  
Call 215-967-2901

## NEW HOLLAND SALES STABLES, INC.

12 Miles East of Lancaster  
on Route 23, New Holland, Penna.

WEEKLY  
FEEDER PIG  
SALE  
EVERY WEDNESDAY



to Start Promptly at 1 P.M.

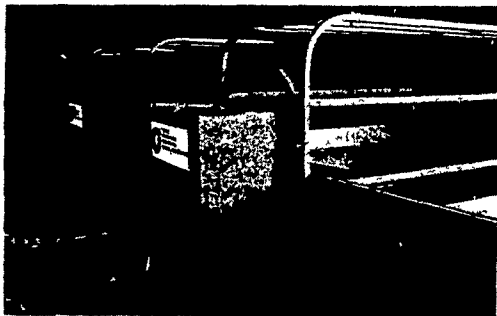
We Will Receive Your Pigs Anytime  
From 7 A.M. Wed. Morning

State Graded Until 12 Noon.  
All pigs inspected by State Approved Veterinarian.  
State tags available at our office for you to tag pigs at home to save 25 cents tagging charge.  
Tags delivered if you call 717-354-4341 our office in advance.

Calf Sale To Be Held In New Sales Pavilion  
Every Thursday At 6:30 P.M.

NORMAN KOLB ABE DIFFENBACH  
717-397-5538 717-393-4464

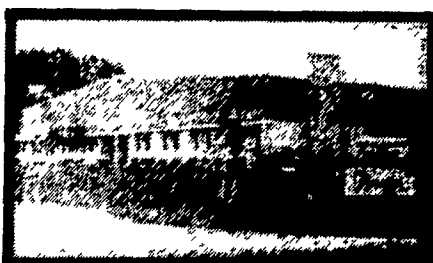
## Cyclone - YOUR SOURCE FOR MORE PROFITABLE HOG SYSTEMS



FARROWING



GESTATION



• CYCLONE Farrowing Systems — they will lower your hog mortality, increase profits.

• CYCLONE Nursery Systems — provide the ideal environment for faster growth.

• CYCLONE Gestation Systems — allows controlled feeding, makes your feed dollar do more for you.

• CYCLONE Finishing Systems — you finish your hogs with less feed per pound of gain.



NURSERY



FINISHING

AUTHORIZED  
**Cyclone**  
DISTRIBUTOR

Phone or Write Your Local Representative for Details; He is your exclusive source for Cyclone Equipment.

**H**  
HERSHEY EQUIPMENT  
COMPANY, INC.

SYCAMORE IND. PARK  
255 PLANE TREE DRIVE  
LANCASTER, PA. 17603  
(717) 393-5807

Route 30 West at the Centerville Exit