

Quick and Easy

9052 10½-18½



7075

Alternate embroidered and plain 9½" squares for a fascinating effect. Crochet 1½" borders of bedspread cotton and join squares to form cloth. Pattern 7075 18 motifs, directions.

Triple seams in front TRIPLE the 'flattery effect'! Sew tunic plus easy pull on pants or dress version in low cost, low upkeep polyester knits.

Printed Pattern 9052 Half Sizes 10½, 12½, 14½, 16½, 18½ Size 14½ (bust 37) tunic 1 3/4 yds 45 inch, pants 2 3/8

Look beautifully dressed in any crowd in this pretty two-part outfit. Shapely dress is topped by easy cardigan with smart seaming detail.

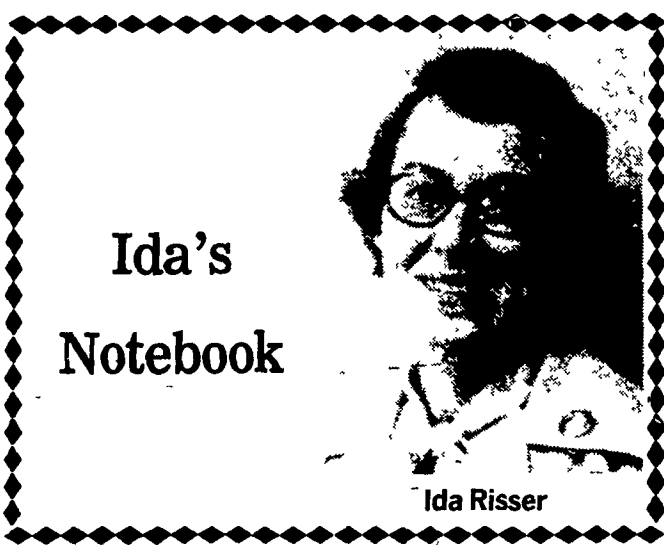
Printed Pattern 9413 Misses' Sizes 8, 10, 12, 14, 16, 18, 20 Size 12 (bust 34) dress 2 yds 45 inch, jacket 1 5/8

\$1.25 for each pattern. Add 35¢ for each pattern for first-class airmail, handling. Send to QUICK and EASY PATTERNS 170 232 W 18 St New York NY 10011

Fashions to Sew (S/S)	\$ 75
1977 Needlecraft Catalog	75
Easy Art Hairpin Crochet	1 00
Easy Art Ripple Crochet	1 00
Easy Art Needlepoint	1 00
Instant Sewing Book	1 00
Nifty Fifty Quilt Book	1 00
Stitch n Patch Quilts	1 25
Stuff n Puff Quilts	1 25

9413
8-20

Please add 25 cents for each Book for postage and handling



How many things can go wrong in one day? You'd be surprised if you could envision a whole day's activities before they even take place. In fact, sometimes I think we'd be better off staying in bed.

Yesterday was "one of those days." While I was picking some of my bushels of green and yellow beans, my husband informed me that one of our older sons, who has come home to help us, had inadvertently chopped off my six foot English Walnut tree. I had bought it two years before and hoped to live to see it bear nuts.

Then one of our biggest and friendliest kittens was run over by our pickup truck. So I dutifully buried it in the corn field.

Next came a late afternoon thunderstorm which struck our telephone line with a

large flash of light in the kitchen and a deafening crack. Now we had no phone to report that our water pump had stopped functioning, and the 50 cows had to be milked.

I've always found that lack of water is one the greatest inconveniences. How well I remember those five days without electricity some years ago when an ice storm hit us. I melted snow and more snow.

Oh, but our troubles weren't over for the day. Just before midnight, we discovered that a cow that had freshened that day was laying out flat with milk fever. No phone - so I drove about a mile to a development to find a house with lights on, as I didn't want to chase anyone out of bed.

Almost forgot - had a flat tire in Lancaster too.

FOR LADIES ONLY

Tuesday, July 26
Jelly and Pickle Making demonstration; Kennett Square Friends Meeting House, W. Sickie St., Kennett Square, Pa., 9:30 to 11:30 a.m.

Pickles and Jam meeting; Berks County Agricultural Center, Leesport, Pa., 8 p.m.

Wednesday, July 27
Canning and Freezing demonstration; 4-H Center, Snyder Rd., Lansdale Pa. 7 to 9 p.m.

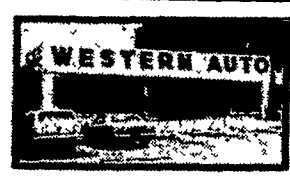
York Co. Farm Women Society County Picnic, 4-H Center, Bair, Pa., 11:30 a.m.

Friday, July 29
Berks County 4-H Fair,

Kutztown Fairgrounds, Kutztown, Pa., 9:30 a.m. to 10 p.m.

Farm Women's Calendar

- Saturday, July 23**
Lancaster County Society 4 family picnic, 5:30 p.m. at the East Petersburg Civic Center.
- Monday, July 25**
Berks County Society 5 tour of the Hickory Farm Store, Berkshire Mall. Meeting will be held at home of Mrs. Herbert Kurtz.
- Tuesday, July 26**
Lancaster County Society 27 fruit salad luncheon with Lancaster County Society 15; 6:30 p.m. at the Donegal Presbyterian Church.
- Berks County Society 3** family picnic, 6:30 p.m.
- Berks County Society 2** meeting at the home of Lois Miller, 8 p.m.
- Wednesday, July 27**
Berks County Society 7 will meet at the Tulpehocken Manor Restaurant.
- Lancaster County Society 24** family picnic at the home of Ira and Dot Mast.
- Thursday, July 28**
Lancaster County Society 11 picnic at the Quarryville Legion Park.
- Friday, July 29**
Lancaster County Society 28 picnic supper and ride on the Strasburg Railroad.



YOU CAN OWN A
WESTERN AUTO
STORE IN:

LITITZ, PA.
CARLISLE, PA.
EBENSBURG, PA.

There is an opportunity available in the above towns for a Western Auto Associate Store selling hardware, sporting goods, automotive supplies, furniture, refrigerators, freezers, washers, televisions, C.B.'s, radios, other electronics, etc. We will train you, help install your store and provide counseling after you're open. Financing is available to qualified prospects. If you're interested in owning your own Western Auto Associate Store call this toll free number today.

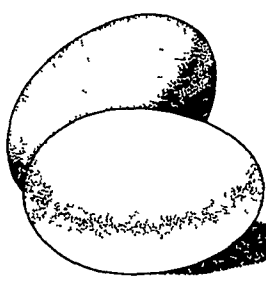
800-821-7700 Ext. 818

Or write:
R.T. Renfro, VP, Western Auto
2107 Grand Ave.,
Kansas City, Mo. 64108

Be sure to provide your phone number and complete address.



**YOU'RE
IN GREAT
SHAPE
WITH EGGS!**



TRY A CLASSIFIED

**29th ANNUAL
OLD THRESHERMAN'S
REUNION
AUG. 17, 18, 19, 20
THE ROUGH
AND TUMBLE
ENGINEERS
HISTORICAL ASSOC.
KINZER, PA.
For more information
contact
AMOS STAUFFER
717-354-4181**

**SUMMER
PAINT
SALE
AMERICAN**

Best Quality Latex
House and Trim Paint
Semi-Gloss or Velvet Flat

Save **\$9.99**
\$4.00 gal.

Hurry, Sale ends
July 30th.

Bring us your painting problems. We give dependable advice to our customers as to what to use and how to use it.

W.L. ZIMMERMAN & SONS
Ph: 717-768-8291
Intercourse, Pa.

LEBANON AREA FAIR

AUGUST 8 - 13, 1977

2 Miles South of Lebanon Plaza
Cornwall & Evergreen Roads

Sunday AUGUST 7	Ham Bar-B-Q - 11:30 a.m. - 2:00 p.m. Marlene Hershey at the Organ 12:00-3:00 p.m. Vespers 7:00 p.m.
Monday AUGUST 8	County Tractor Pull (local) 7:00 p.m. \$2.00 Adults (12 & over) Country Velvets 8:00 p.m.
Tuesday AUGUST 9	Dairy Nite - Hand Milking Contest - Calf Dressing Contest - 8:00 p.m. Square Dance 8:00 - 11:00 p.m. Floyd Feick-Music; Earl Batman - Caller
Wednesday AUGUST 10	Riverboat Crew 7:30 - 10:30 p.m.
Thursday AUGUST 11	Horse Pulling Contest 7:00 p.m. \$2.00 Adults Chicken Bar-B-Q - 2:00-8:00 p.m.
Friday AUGUST 12	State Sanctioned Tractor Pull (class A) - 7:00 p.m. \$3 00 Adults
Saturday AUGUST 13	County Garden Tractor Pull 7:00 p.m. \$1 00 Everyone

Many 4-H, FFA, Open, and Commercial Exhibits will be on display throughout the week.

BIG COUNTRY MUSIC SHOW

COMING TO THE PEQUEA SILVER MINES

PEQUEA SILVER MINES PRESENTS DONNA FARGO



SUNDAY JULY 24th...2 SHOWS...3 P.M. & 6 P.M.

BOTH SHOWS FOR ONE ADMISSION PRICE
TICKETS ON SALE AT THE GATE \$8.00

Located approximately 10 miles Southwest of Lancaster, Pa. It lays between Route 324 and the New Danville Pike.

KEN LIGHTER and the PLAYBOYS

Will Also Appear
Food Served by the Following Fire Companies
CONESTOGA FIRE CO., WEST WILLOW FIRE CO.,
NEW DANVILLE FIRE CO.

This is a SILVER FORD PRODUCTION
Co-ordinated by
"THE OLE SHERIFF" Bobby Montgomery
Sound by Ken Alexander
MC's - Bobby Montgomery & Chet E.

RAIN OR SHINE BRING LAWN CHAIRS

Also in attendance will be Providence Township Ambulance Association and West End Ambulance Association.