

# Orchardists

[Continued from Page 1]

the main weather worry of most orchard farmers in the county. John Wolgemuth, Mount Joy, too stated that moisture now was his main concern. "The moisture content in the topsoil is all right now with the recent rains but we could use more moisture in the subsoil," he mentioned. Wolgemuth started picking early apples and peaches last week and he expects better than average crops.

sudden freezing weather, high winds, and storms can all greatly affect the fruit harvest in a very short time and have a disastrous effect on it.

Another problem which affects orchard farmers is insect and disease control. Although the crops are fairly clean now, constant inspection of trees and fruit for insects and disease must be done. Insecticides play an important part of pest control.

Raymond Kauffman, Ronks, noted that his peaches and apples looked very good and he hoped for nearly 100 per cent from his crops. "About the worst thing that could happen now is for a hail storm to come along," was his comment. "However, unless something unforeseen happens this summer, the crops should be excellent."

There are also labor problems in orchard farming. Government regulations can make it difficult for both the farmer and the migrant worker in the large orchard business. Recent laws have added to the problem.

Weather seems to be a main concern of fruit growers in Lancaster County. Too much moisture or not enough moisture, hail,

Orchard farmers predict that in the future more dwarf trees will be grown in Lancaster County, more mechanical harvesting will be done using less workers, and the fruit crops will be bigger and better in the next few years.

## 4-H horse club lists activities

NEFFSVILLE, Pa.—The July meeting of the Boots and Saddles 4-H was held the home of Lori Sammons, Neffsville. Films of past trail rides were shown.

Fellenbaum and Sandy Hamilton; break and out-Roz Falk; pony trail-class-Cindy Wenger; and horse trail class-Doug Fellenbaum.

Two demonstrations were given. Beth Harcelrode, Leola, talked about the beats of the various gaits of the horse. Lori Sammons spoke on the proper pulling of the horse's mane and tail.

## Loan officer named

The next meeting will be held August 19. Members are reminded that the Lancaster County Roundup is July 23.

LANCASTER - John J. Barrett has joined the loan administration department of National Central Bank as a loan quality control officer according to an announcement made this week by Donald M. Cooper, executive vice president and head of the bank's loan group.

The club held its first gymkhana of the season on June 25. Winners in the grooming and showmanship contest were: senior-Lashon Bussell; and junior-Pam Sammons.

Other classes and winners include: Jr. hunt seat equitation-Lori Sammons; Sr. western equitation-Donna Sammons; pony barrel race-Karen Eberle; horse barrel race-Terry Miller; western pleasure pony, 12.2 hands and under-Pam Sammons; western pleasure pony, 12.2 to 14.0 hands-Doug Fellebaum; western pleasure horse-Donna Sammons.

Barrett was an assistant vice president and credit manager with the Mid-Atlantic National Bank, New York, prior to coming with National Central Bank.

Western riding class-Kathy Delmonte; pony pole bending-Pam Sammons; horse pole bending-Terry Miller; pair class-Doug

A native of Buffalo, New York, he graduated from Uniondale High School and Adelphi University with a degree in business administration.

He is married to the former Diane H. Diamond of New York City.



## The Buccaneer

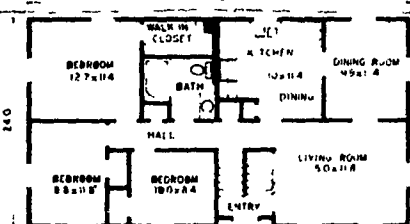
A Distinctive Split-Foyer Home, In Two Styles . . . A Traditional Colonial and Smart Contemporary . . . Planned For Expansion.

SEE LOWES ENERGY EFFICIENT HOMES

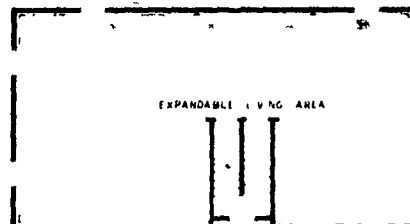
SAVE UP TO 65%  
OF MONTHLY  
UTILITY BILLS

**\$13,605.00\***

\*Price Includes: All Materials From Foundation Plate Up, To Complete The Upper Level.



Upper Level Plan  
1050 Square Ft.



Lower Level Plan  
1050 Square Ft.

The Optional Lower Level Finish Materials Makes This Home Even Larger.

For a reasonable additional fee, Lowe's will furnish the materials to complete the lower level of the Buccaneer, giving you more total living space — or perhaps a one or two car garage with family room or utility room. This addition will give you a total of 2,100 square feet of living area for your comfort . . . so, you have the choice of finishing it now or later . . . and of how you wish to finish it. It's yours to plan the way you want it!

The Buccaneer is NOT a pre-fab, NOT a shell house. It IS the complete material package necessary to build this attractive, split-foyer home.

### Here's What's Included:

The basic package provides all materials from foundation plate up, to finish completely the upper story, which has 3 bedrooms, full bath, kitchen, dining room, and large living room with wrought iron railing overlooking entry foyer. This gives you a total of 1,050 square feet of heated living area (electric baseboard heat), with the lower level to be completed at your option. The materials furnished will meet or exceed the minimum property standards of FHA. Any changes necessary to meet local or state building codes may alter the price accordingly.

### You Can Tailor This Home To Be Uniquely and Individually Yours.

The unfinished lower level of the Buccaneer is yours to grow with! When finished, it doubles the home's living space — and it's yours to finish any way you like. Add more bedrooms and baths . . . a garage and family room . . . a utility room and large recreation room. Whatever you choose to do with the space, this Homestead® is a home you can build the way you want to . . . when you want to! Let Lowe's show you the many options available. So, remember, with a Lowe's Homestead®, you can think big in every way except cost.

### Want More Information?

We've got the whole story and we'd like to share it with you. There's no obligation — just clip coupon and mail.

Mail To: Lowe's, Inc.  
1107 Enterprise Rd.  
Lancaster, PA 17520

Yes, I want more information on the Buccaneer

Name: \_\_\_\_\_

Street: \_\_\_\_\_

City: \_\_\_\_\_

State: \_\_\_\_\_ Zip: \_\_\_\_\_

I own land ( ) yes ( ) no — I am a builder ( ) yes ( ) no

# LOWE'S

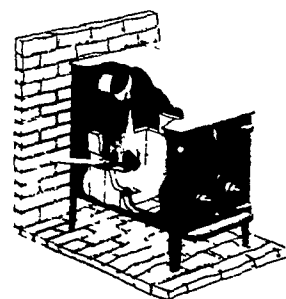
## THE FARMERS' MARKET

1107 ENTERPRISE RD. LANCASTER

E. PETERSBURG 569-7341

Open Mon. & Fri. 8 to 8  
Wed. & Thurs. 8 to 5:30  
Sat. 8 to 4

## FISHER WOODBURNING STOVES



3 STOVE  
MODELS  
2 FIREPLACE  
MODELS

THE FINEST WOODBURNING STOVES  
MONEY CAN BUY  
**BOWMANS STOVE SHOP**

RD 3, Napierville Rd.  
Ephrata, PA 17522  
Ph: 717-733-4973