

Livestock market and auction news

Leesport Auction

July 6, 1977
CATTLE 257. Supply included 44 head feeder cattle. Compared with last Wednesday's market, slaughter steers about steady. Slaughter cows 50 cent to \$2 lower. High Choice & Prime No. 2-4 1150-1300 lbs. slaughter steers 40.00-41.00, Choice No. 2-4 1000-1250 lbs. 38.75-41.10, Good 35.10-38.60, Standard 32.00-34.85. Few Choice slaughter heifers 35.85-37.50, few Good 34.00-36.00, few Standard 30.00-31.50. Utility & High Dressing Cutter slaughter cows 26.85-28.85, Cutters 25.50-27.50, Canners 23.00-25.25. Few Good slaughter bullocks 34.25-38.50, few Standard 32.25-34.00, few Utility 28.10-33.00. Few Yield Grade No. 1 1000-1400 lbs. slaughter bulls 31.00-35.00. Good 400-580 lbs. feeder steers 35.00-41.50; Good 300-500 lbs. feeder bulls 35.00-41.50.

CALVES 182. Choice vealers 50.00-60.00, Good 41.00-47.00, Standard & Good 110-130 lbs. 38.00-42.00, 90-110 lbs. 34.50-38.50, Standard 70-85 lbs. 25.00-35.00. Farm calves, holstein bulls 95-120 lbs. 44.00-49.50.

HOGS 226. Barrows & gilts \$3 to \$3.25 higher. US No. 1-2 200-230 lbs. barrows & gilts 49.60-50.25, No. 1-3 190-240 lbs. 48.75-49.60, No. 1-3 150-165 lbs. 38.00-38.50. US No. 1-3 350-650 lbs. sows 33.00-35.75, couple 36.75. Few Boars 25.00-33.00.

FEEDER PIGS 169. Few US No. 1-3 13-16 lbs. feeder pigs 105.00-145.00 per lbs., No. 1-3 20-30 lbs. 86.00-107.00 per lb., No. 1-3 35-55 lbs. 76.00-97.00 per lb., lot No. 1-3 65 lbs. 72.00 per lb.

SHEEP 33. Few Choice 60-110 lbs. spring slaughter lambs 50.00-55.50, few Good 60-100 lbs. 43.00-47.00. Slaughter ewes 10.00-14.00.

TRY A CLASSIFIED

Des Moines

July 6, 1977
 Compared to Tuesday's close, beef trade closed slow. Demand light to moderate. Choice 4 steer beef 50 higher. Choice 3 heifer beef steady. Choice 4 heifer beef 50 higher. Good heifer beef 1.00 higher. Primal beef cuts, arm chucks 50 higher. Canner-Cutter cow beef steady. Sales on 33 loads steer and heifer beef confirmed. One cow beef load.

STEER BEEF
 9 Confirmed Loads
 Choice 4 600-900 lbs. 61.00 50 higher
 Good 2-3 500-800 lbs. 59.75-60.25.

HEIFER BEEF
 24 Confirmed Loads
 Choice 3 500-700 lbs. 63.75
 Steady last Friday;
 Choice 4 500-700 lbs. 60.25
 Good 2-3 500-700 lbs. 56.75-57.50, mostly generally 1.00 higher; 57.25-57.50 than last thursday

COW BEEF
 1 Confirmed Load
CANNER & CUTTER 55.00 steady

CHOICE 3 PRIMAL BEEF CUTS
 9 Confirmed Loads
 Hinds (steer) 145-190 lbs. 78.25 load
 Fores (heifer) 130-210 lbs. 51.00
 Arm Chucks 75-120 lbs. 46.00 50 higher
 Arm Backs 58.00

Lancaster Feeder Cattle

Friday, July 1, 1977
Feeder Cattle
 Today 253
 Last Friday 242
TREND: Market fully tested, bulk of supply sold in lots of 3 or less in clean-up trade; couple loads and few lots fully steady.
FEEDER STEERS: One lot Choice 320 lbs. 41.75; couple loads mixed Good and Choice 680-700 lbs. 37.50-37.60; one lot Good 770 lbs. 36.00.

New Holland Horse

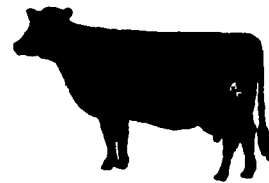
New Holland Sales Stables
 Monday, July 4
 Reported receipts of 300 head of horses, mules, and ponies. Market steady with last week's market.

Driving horses 175-185, riding horses 150-300, better horses 325-800, lightweight killers 24-26, heavyweight killers 28-30, mares 15-55, colts 10-25, geldings 15-55, larger ponies 65-145.

New Holland Dairy

New Holland Sales Stable
 Wednesday, July 6
 Reported receipts of 104 cows and 10 heifers. Market steady with last week's market.

Load of Butler Co. fresh 530-830, springers 645-700; load of New York fresh 650-1085, springers 675-1150; load of Pennsylvania springers 595-615; load of Wisconsin fresh 600-740; load of Pennsylvania fresh 550-900. Local cows 450-800; springing heifers 500-650.



BEEF TRIMMINGS
 15 Confirmed Loads
 Beef Trimmings - 50
 Chemical lean (Fresh) 28.50-29.00.

Compared to Tuesday's close, fresh pork cut trade moderate; demand good. Fresh loin steady to 6.75 higher; skinned hams 1.00-4.00 higher; Bellies 50-4.00 higher. Picnics, boston butts and spareribs not well established.

FRESH PORK CUTS
 Loins 14-down lbs. 91.50-96.50 5.75-6.75 higher; 14-17 lbs. 93.50-95.50 4.75-6.75 higher; 17-20 lbs. 80.00-84.50 steady to 4.50 higher.
 Picnic 4-8 lbs. 50.00
 Boston Butt 4-8 lbs. 83.25-84.00.

Spareribs 2-3 lbs. 127.00 selected load
 Skinned Hams 14-17 lbs. 75.00; 1.00-2.00 higher; 17-20 lbs. 75.00; 20-26 lbs. 76.00-77.00; 26 & Up lbs. 71.50-72.25 1.50-2.25 higher.
 Bellies, Sdls 10-12 lbs. 62.00 4.00 higher; 12-14 lbs. 70.00; Frozen 56.35-57.00 4.00 higher; 16-18 lbs. 66.00-1.00 higher; 18-20 lbs. 59.50 50 higher; 20-25 lbs. 49.50-49.75 1.50-1.75 higher.

Bnls Cut Butt 1-1/2 - 3 lbs. 104.00
 Pork Trim 50 lean 44.00; 80 lean 72.00 fresh; 74.50 frozen.
 Cheek Meat 73.00
 Jowl 39.50 frozen.
 Offal and Variety:
 Feet 15.75 frozen
 Melts 11.00.

HAY, STRAW AND EAR CORN SALE

Every Wednesday at 12 Noon
 At David Good's Farm Equipment Sale
 North Maple Ave., Leola, PA

HARVEY Z. MARTIN

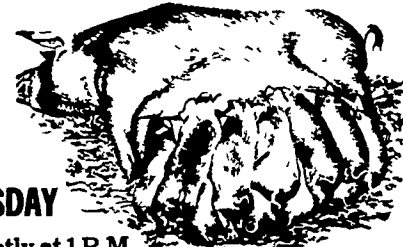
Home Phone 215-445-5303
 We Buy On Orders
 Bus. Phone Wed. Only
 717-656-7270

We also buy hay and straw privately.

NEW HOLLAND SALES STABLES, INC.

12 Miles East of Lancaster
 on Route 23, New Holland, Penna.

WEEKLY FEEDER PIG SALE EVERY WEDNESDAY



to Start Promptly at 1 P.M.
 We Will Receive Your Pigs Anytime
 From 7 A.M. Wed. Morning

State Graded Until 12 Noon.
 All pigs inspected by State Approved Veterinarian.
 State tags available at our office for you to tag pigs at home to save 25 cents tagging charge.
 Tags delivered if you call 717-354-4341 our office in advance.

NOTICE

Wednesday, July 13, 1977 Jonathan G. Lapp will consign 34 bred Gilts. 3 way cross. Also 3 Duroc Boars. Gilts will begin to farrow July 18.

Calf Sale To Be Held In New Sales Pavilion
 Every Thursday At 6:30 P.M.

NORMAN KOLB ABE DIFFENBACH
 717-397-5538 717-393-4464

Valley Livestock

Athens, Pa.
 Monday, July 4
 Reported receipts of 291 calves, 110 cows, 31 bulls, 28 heifers, 36 steers, 144 hogs, 3 lambs, and 14 sheep. Cattle market steady and calf market steady.
 Veals 40.00-55.00; bobs, 90 to 110 lbs., 34.00-38.00; bobs, 80 lbs. and down, 26.00-33.00; grassers and feeders, 26.00-

32.00; lambs 30.00-40.00; sheep 12.00-20.00; hogs 250 lbs. 44.00-46.75; 30.00-32.00; boars 24.00-27.00-30.50; steers, 34.00-38.50; steers, 26.00-31.50; bulls, 30.00-36.00; cows, good 28.00-30.50; med. 24.00-25.50; cows, or small 18.00-22.00; 15.00-50.00; goats 12.00-

Joliet Cattle

July 6, 1977
CATTLE: 1800 trading slow. Slaughter steers 50 to 75 higher. Heifers steady to 50 higher. Receipts about 20 per cent.
SLAUGHTER STEERS: High Choice and Prime 3-4 1125-1275 lbs. 41.75-42.25. Choice 2-4 1050-1350 lbs.

40.50-41.75. Mixed Good Choice 2-3 900-1250 lbs. 40.50.
SLAUGHTER HEIFERS: Choice, few Prime, 24-1100 lbs. 39.50-40.50. Good and Choice 2-3 700-1000 lbs. 37.50-37.50. Cows: 1-3 25.50-27.00.

Know Where the Activities Will Be
 Read the Farm Women Calendar

GREEN DRAGON LIVESTOCK SALES

1 mile North of Ephrata, PA



COWS COWS COWS
 BUYERS FROM 3 STATES

Regular consignments from Ray Kyper, Bob Kennedy, Dale Brewer and Ed Stover plus local consigners.

Lots of good Northern Feeders and Stockers

SALE EVERY FRIDAY

Bulls, Steers, Slaughter Cows, Lambs and veal calves.

11:00 A.M. - Beef Sale Stockers & Feeders 200 to 250 each week.

12:30 P.M. - Dairy Cows

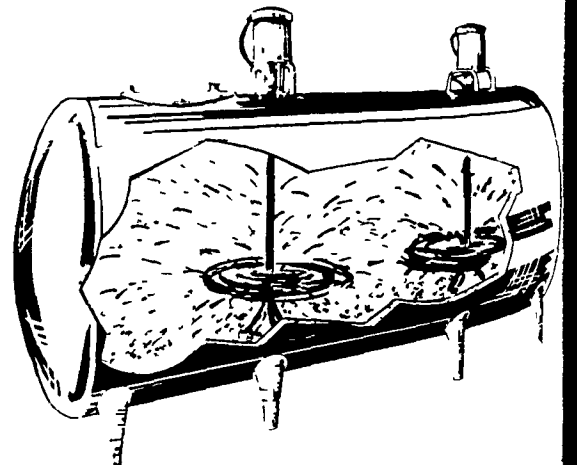
7:00 P.M. - Small Animal Sale

For Special Sales and Herd Dispersals on the farm or at our barn or other market information call: Office 717-733-2444.

Walter H. Risser, Proprietor

Zero Concord

MOST ADVANCED MILKING SYSTEM
 AVAILABLE FROM "TEAT TO TANK"



"SPATTER SPRAY" AUTOMATIC TANK WASHER

- Entirely push-button
- Only tank with a built-in washer

J. M. HORST SERVICE CO.

Box 231, Quentin, PA Phone (717) 274-1242

L & M FUR & WOOLEN ENTERPRISE



Quality Electrified Mountons & Furs
 Tannery Direct Dist. - Wholesale & Retail
 Check our Quality, Price & Services!

- Woolen Hosp. Pads - Natural & All Colors
- Pa. Largest Selection of Woolen Products
- Sheepskin Coats at Reasonable Prices
- See Us At Meadowbrook Market in Leola

117 W. Summit St., Mohnon, Pa.
 215 777-2465
 Hours: Mon. - Fri. 9-8:30; Sat. 9-5

VINTAGE SALES STABLES, INC.

10 mi. East of Lancaster
 on Rt. 30
 Box 100, Paradise, PA
 717-442-4181
 or 768-8204

EVERY THURSDAY AT 12 NOON

Hay, Straw & Grain Sale

We have plenty of good buyers each week.
 We need consigners.

Contact:

L. Robert Frame, manager