

# Hog Markets

## Lancaster Market

Monday, July 4, 1977  
 1179  
 Monday 1944  
 Mail 48.25-48.75;  
 weight 45.75-47.25;  
 weight 44.50-47.25;  
 sale 47.25-48.25; sows  
 7.00; boars 28.00-30.00.

## Indianapolis

July 7, 1977  
 slow steady to weak,  
 prices 25 lower US 1-2 200-  
 49.25-49.50; 1-3 200-  
 48.50-49.25. Sows:  
 few sales 25-50 higher  
 bid test US 1-3 few 40-  
 39.25-40.00 one lot 600  
 0.50.

**TRY A  
 CLASSIFIED**

## Lancaster Auction

Wednesday, July 6, 1977  
**HOGS:** Barrows and gilts  
 2.00-3.00 higher, although  
 few sales 260-280 lbs. steady  
 to firm.  
**BARROWS AND GILTS:**  
 US 1-2 200-240 lbs. 48.85-49.25;  
 US 1-3 210-245 lbs. 48.00-48.75;  
 few US 2-3 260-280 lbs. 43.00-  
 45.00.

## New Holland Feeder Pig

Wednesday, July 6, 1977  
**Feeder Pigs**  
 Today 760  
 Last Wednesday 820  
**TREND:** Compared to last  
 Wednesday feeder pigs 6.00  
 lower. All prices on a per  
 hundred weight basis.  
 US 1-2 35-50 lbs. 83.00-93.00;  
 50-60 lbs. 76.00-84.00; 60-75  
 lbs. 61.75.  
 US 2-3 25-50 lbs. 79.00-85.00;  
 50-60 lbs. 68.00-78.00; one lot  
 70 lbs. 62.00.

## Vintage

Saturday, July 2  
 Reported 203 head.  
 No. 1 210-240 lbs. 46.00-  
 47.35; No. 2 and 3 210-240 lbs.  
 45.00-46.25; sows 380-585 lbs.  
 33.25-36.00; boars 225-560 lbs.  
 28.00-32.50, heavyweights  
 270-360 lbs. 36.25-41.25; light-  
 weights 40.25.

Wednesday, July 6  
 Reported 779 head.  
 No. 1 210-240 lbs. 48.50-  
 49.85; No. 2 and 3 210-240 lbs.  
 47.00-48.60. Sows 410-450 lbs.  
 35.50-36.25; Boars 180-595 lbs.  
 29.75-35.75; heavyweights  
 270-360 lbs. 37.00-43.10;  
 lightweights 150-185 lbs.  
 40.25-45.75.

## Lancaster Feeder Pigs

Thursday, July 5, 1977  
**Feeder Pigs**  
 Today 1586  
 Two Weeks Ago 2094  
**TREND:** Compared to two  
 weeks ago, feeder pigs firm  
 to 5.00 higher. All prices on a  
 per hundred weight basis.  
 US 1-2 30-40 lbs. 99.00-  
 102.50; 40-50 lbs. 82.00-95.00;  
 50 head 74.50-78.00; 50-60 lbs.  
 77.50-82.00; 30 head 50-55 lbs.  
 89.00-93.00; 64.76 lbs. 66.00-  
 68.00.  
 US 2-3 25-40 lbs. 72.00-88.00;  
 40-50 lbs. 68.00-80.00; one lot  
 47 lbs. 88.00; 50-60 lbs. 50.00-  
 70.00.

## Vintage Feeder Pig

July 7, 1977  
 Reported 178 head.  
 No. 2 and 3 33-45 lbs. 70.00-  
 85.00; No. 2 45-60 lbs. 65.00-  
 86.00; Utility 25-40 lbs. 74.00-  
 76.00.

## Peoria Auction

July 7, 1977  
 3400, fairly active, 25-50  
 higher. US 1-2 200-230 lbs.  
 49.00-49.25, about 260 head  
 49.50, few 180-200 lbs. 40.50-  
 48.50. US 1-3 200-260 lbs.  
 48.00-49.00; sows 50 lower.  
 US 1-3 350-650 lbs. 39.00-40.00.

## St. Louis

July 7, 1977  
 4,000 moderate, steady to  
 25 higher. US 1-2 200-240 lbs.  
 49.00-49.25; 1-3 200-250 lbs.  
 48.75-49.00; 2-3 240-270 lbs.  
 48.25-48.75. Sows: steady to  
 50 higher. US 1-3 300-500 lbs.  
 39.50-39.75; over 500 lbs.  
 39.75-40.50.

## Lancaster Grain Prices

Thursday, July 7  
 These prices are made up  
 of the average prices quoted  
 by a number of participating  
 area feed and grain concern.  
 It should be noted, however,  
 that not every dealer or broker  
 handles each commodity. All prices  
 are per bushel except ear  
 corn and soybean meal which  
 are per ton.

The average prices quoted  
 Thursday, July 7 are as  
 follows:

|              | Bid    | Offered |
|--------------|--------|---------|
| Ear Corn     | 51.50  | 62.00   |
| Shelled Corn | 2.32   | 2.53    |
| Barley       | 1.71   | 1.95    |
| Oats         |        |         |
| Local        | 1.35   | 1.55    |
| Western      | 1.72½  | 1.92½   |
| Wheat        | 2.29   | 2.46    |
| Soybeans     | 6.00   | —       |
| Soybean Meal | 227.00 | —       |

+Bid is the price the  
 dealer will buy from the  
 farmer delivered to the mill.  
 Sell is the price the dealer  
 will sell for at his mill.

# Futures Trading

(Closing Bids as of Thursday, July 7)

|       | Chicago Cattle | Chicago Hogs | New York Maine Potatoes | Chicago Fresh Eggs |
|-------|----------------|--------------|-------------------------|--------------------|
| June  |                |              |                         |                    |
| July  |                | 47.98        |                         | 51.10              |
| Aug.  | 40.30          | 44.25        |                         |                    |
| Sept. |                |              |                         | 56.70              |
| Oct.  | 38.90          | 37.98        |                         | 55.68              |
| Nov.  |                |              | 4.83                    | 57.25              |
| Dec.  | 39.55          | 37.55        |                         | 59.15              |
| Jan.  | 39.60          | 36.20        |                         |                    |
| March |                |              | 5.64                    |                    |
| April |                |              | 6.04                    |                    |
| May   |                |              | 6.81                    |                    |

May-Cattle are lower, Hogs are lower, Potatoes are lower and eggs are lower.

Market Provided by Commodity Department  
 Reynolds Securities, Inc.

# CHICAGO GRAIN FUTURES

(Closing Bids as of Thursday, June 30)

|       | Wheat | Corn  | Soybean | Soybean Meal |
|-------|-------|-------|---------|--------------|
| July  | 32.36 | 2.18½ | 6.41    | 168.50       |
| Aug.  |       |       | 6.38½   | 170.30       |
| Sept. | 2.46¼ | 2.24¼ | 6.16½   | 169.30       |
| Oct.  |       |       |         | 165.30       |
| Nov.  |       |       | 6.08¾   |              |
| Dec.  | 2.54  | 2.29¾ |         | 168.80       |
| Jan.  |       |       | 6.14    | 168.50       |
| March | 2.62¼ | 2.38¼ |         |              |

Trend-Corn is lower, Wheat is lower, Soybeans are lower and Soybean Meal is lower.

Market Provided by Commodity Department  
 Reynolds Securities, Inc.

# U.S. Inspected Livestock Slaughter

Market report not available.

Know Where the Activities Will Be?  
 Read the Farm Women Calendar.

## J.M.HOOBER INC.

SINCE 1895

LANCASTER STOCK YARDS

If you want your hard-earned moneys worth in quality feeder cattle and if you want expert handling of your market cattle then we should get to know each other. Please feel free to call us at any time for up-to-the-minute market information. Remember - when it comes to livestock - J. M. Hooper is Number 1.

OUR BUSINESS IS MORE THAN LIVESTOCK  
 OUR BUSINESS IS SERVICE TO YOU

FOR TOP MARKET DOLLARS

J. M. Hooper Steer Division  
 Ph: (717) 397-6191, 569-2084

Please Call Us Soon  
 J.M. Hooper Hog,  
 Calf & Sheep Division  
 Ph: (717) 397-6191, 626-5659

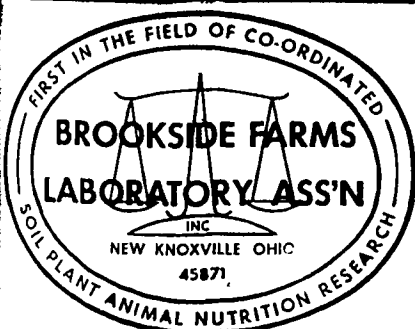
## HAY, STRAW & CORN

-SALE-

Every Friday at 12 Noon.

## Green Dragon Market & Auction

RD No. 4 Ephrata, Pa. 717-733-2334  
 1 mile North of Ephrata on N. State St.



## CONTACT:

JOHN CAMPBELL

Atglen, PA  
 (215) 593-5529

GARY MCGEE

Spring Run, PA  
 (717) 349-2340

DAN DERR

Conowingo, MD.  
 (301) 378-3280

have a nice weekend...

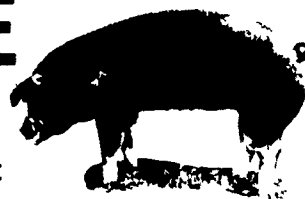
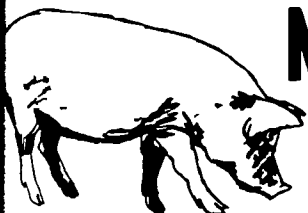


# ATTENTION CATTLE FEEDERS

Do you want to make buying your stockers and feeders easy. It can be very simple. Just call and give us your order. All orders filled to your exact specifications. Call us anytime. We can be very helpful.

## NEXT FEEDER PIG SALE

TUESDAY, JULY 19 - 1 P.M.



Consign all your feeder pigs to Walter M. Dunlap & Sons  
 where they will be handled by a capable and experienced staff.

Feeder pigs received from 6 A.M. to 11 A.M.

## WALTER M. DUNLAP & SONS

### LANCASTER STOCK YARDS

Consignors can get state tags at our office, thereby saving 25c marketing expense

For Further Information, Call 717-397-5136