

Bull testing nominations accepted

HARRISBURG -- Pennsylvania Agriculture Secretary Kent Shelhamer has announced that nominations are now being accepted for the 1977-78 Pennsylvania Bull Testing Program. The test is sponsored by the Pennsylvania Department of Agriculture and is conducted at the Meat Animal Evaluation Center located on the Penn State University campus.

Shelhamer said that bulls born between October 1, 1976 and April 15, 1977 are eligible for this Fall's test. They must have a type score of 12 or higher and an adjusted 205 day weight of 475 or 525 pounds depending on the breed. The bulls must also have an adjusted 205 day ration of 100 or higher.

First choice in the testing program is given to Pennsylvania producers. If open space remains, then out-

of state bulls will be accepted until the pens are full.

Shelhamer said that sale prices for performance tested bulls over the past few years show that people are willing to pay more for a bull that has a good honest performance rating. "If we look at the Angus bulls that sold this past year," Shelhamer noted, "bulls with a final Index Ratio below 100 averaged \$475 per bull while those bulls with a final Index Ratio above 105 averaged \$807 each."

The program is designed to provide information into improvement of the breed, Shelhamer said, and both large and small producers can participate and have their bulls compared under similar conditions.

The deadline for nominations is August 15, 1977. Any person wanting a copy of the Bull Testing

Rules and Regulations or applications should contact the Pennsylvania Department of Agriculture, Meat Animal Evaluation Center, University Park, Pa. 16802, or phone 814-238-2527.

Jobs added in rural areas

WASHINGTON, D.C. -- The nation's rural improvement effort has been getting a boost from a steep rise in the number of non-metro jobs.

Nearly four million non-farm jobs were added in rural and other small communities between 1970 and 1977. That's about 40 per

cent of the U.S. total during that time period, according to a USDA economist.

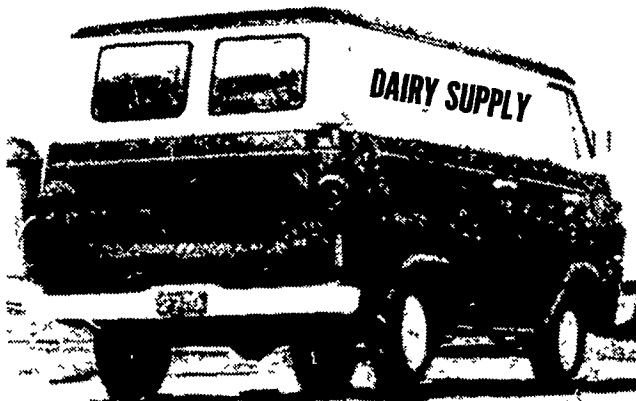
The USDA's Economic Research Service says that the rate of gain was about twice as great in non-metro areas as compared to metro areas. In all major non-farm categories, non-metro employment rose 22 per cent

(3.8 million) from 1970. Metro areas reported a 10 per cent increase (3.8 million) from 1970.

The biggest non-metro increases were in services (39 per cent), mining (36 per cent), and finance, insurance and real estate groups (34 per cent).

TRY A CLASSIFIED

We Do Want To THANK YOU



FOR THE SUPPORT OF OUR SUPPLY TRUCK IN THE LAST SIX MONTHS. WE WILL CONTINUE TO OFFER YOU THIS SERVICE.

Kids' recipes in print

PARK RIDGE, Ill. - The American Egg Board has responded to the need for child-tailored recipes with a bright new recipe leaflet, "Kids in the Kitchen."

School-aged children can easily master the nine

recipes specially developed for this leaflet. From the kid-illustrated cover to the instructions on "How to peel a hard-cooked egg," "Kids in the Kitchen" is designed and written at a level to which children can relate.

All the recipes have been child-tested for appeal and ease of preparation, and combine some child-appeal regulars - like bologna, hotdogs, pizza - with that nutrition favorite, eggs. The recipes range the menu with beverages, sandwiches, main dishes and snacks, including step-by-step instructions for frying and hard-cooking eggs.

"Kids in the Kitchen" is available from AEB, 205 Touhy, Park Ridge, Ill. 60068 for \$1 per 100.

Demo. planned

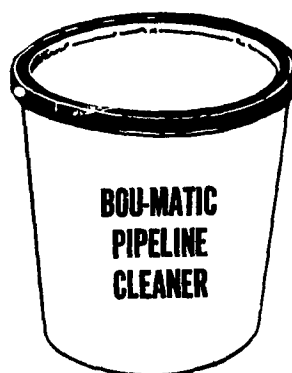
NORRISTOWN, Pa. - Dried apples, apricots and banana chips along with corn and other dried vegetables are appearing on the market. Campers and back-packers are finding them convenient, others enjoy them.

There is interest in how to dry vegetables and fruits at home. Penn State Extension home economists will have a demonstration on how and a discussion of safe practices for drying foods on Wednesday, July 20, 9:30 to 11:30 a.m. at the 4-H Center, Snyder Road, Lansdale, Pa.

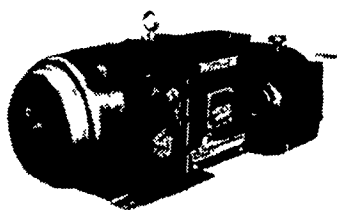
The leaflets available at the meeting will show how to construct trays for drying in the oven and directions for making a dryer using electric lights. There will be an exhibit of dried foods and a demonstration of making fruit leathers.

Everyone is welcome and there is no fee or pre-registration required.

BOU-MATIC MEANS GOOD MILKING



SPECIAL PRICE ON BOU-MATIC EXTRA CHLORINATED PIPELINE CLEANER (POWDERED) IN 300 GAL. DRUMS CALL NOW

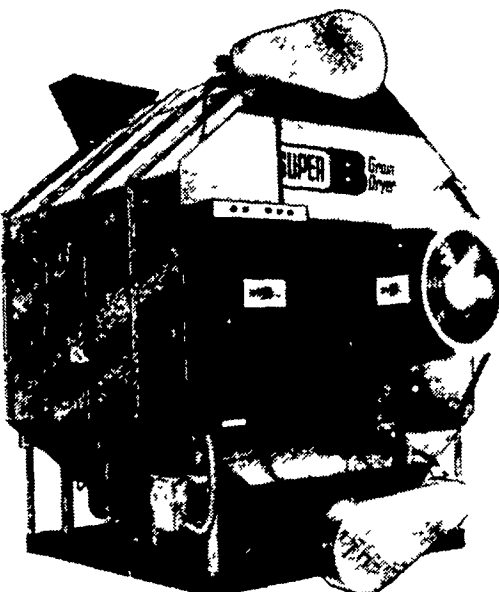


GET PREPARED WITH STANDBY POWER
WINCO GENERATORS
PTO - Sizes 15 KW to 65 KW
Portable Units 1000 Watts to 7300 Watts
Stationary Units 25 KW to 100 KW

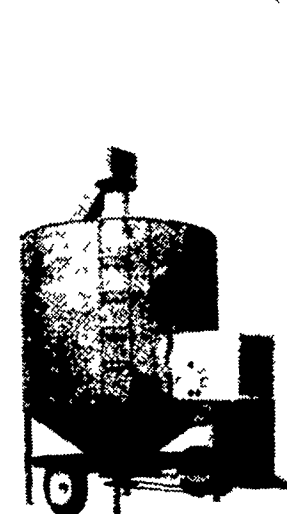
GRAIN DRYING EQUIPMENT

- Read Grain Bins
- Grain Legs
- Continuous Flow Dryers
- GT Batch
- Circle Grain Bins
- Grain Augers
- Grain Cleaners
- Recirculating Dryers

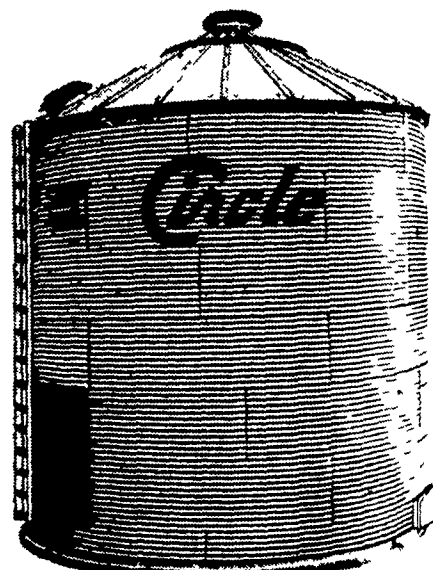
USED 36 FT. 16,000 BU. STORMOR IN-BIN DRYER WITH 2 - 24" HEATING FANS, COMPLETE WITH ACCESSORIES.



SUPER B AUTOMATED BATCH GRAIN DRYER



GT BATCH RECIRCULATING



CIRCLE GRAIN BINS FEED BINS

SALES—INSTALLATION—SERVICE

SHENK'S FARM SERVICE

501 E. Woods Drive
Bulk Tanks & Therma • Stor

Lititz, Pa. 17543

Phone 717-626-1151

Our Service Trucks Are Radio Dispatched
24 HR. SERVICE OFFERED

ERTH-RITE SOIL CONDITIONER

MAXICROP LIQUID PLANT FEEDING

FEED-RITE

Vitamin & Mineral for livestock and poultry.

ZOOK & RANCK, INC.

RD1, Gap, PA 17527
Phone 717-442-4171

SOONER OR LATER YOU'LL OWN A GENERAL PURPOSE BARN



Q

Why are Huskee-Bilt general purpose buildings so popular?

They are versatile and economical. Plus we offer you a wide range of options — multiple colors, big, wide doors, high eaves, stress rated lumber, skilled crews and Huskee-Bilt reliability.

If you need a machine storage building, hay shelter, animal shelter or repair shop, you've got it in the Huskee-Bilt General Purpose Building. You'll be surprised at the low square footage price.

ALSO ask about Thrive Center Environmental, our Total Animal Confinement Systems



MERVIN MILLER

R R 2 — KEENER ROAD
LITITZ, PA 17543
PHONE: (717) 626-5204