

Livestock market and auction news

Pa. Auction Summary

June 24, 1977

CATTLE 8915. Compared with 8333 head last week, and 8282 head a year ago. Compared with last week's market, slaughter steers 25 cents to \$1 higher. Slaughter heifers & bulls uneven. Slaughter cows uneven, week started mostly steady, ended up to \$1.25 higher. Slaughter bullocks steady to \$1 higher. **STEERS:** High Choice & Prime 39.00-41.25, Choice 38.00-41.00, Good 34.50-38.50, Standard 30.25-35.35, few Utility 27.00-32.00. **HEIFERS:** Choice 34.00-38.25, Good 31.50-36.00, Standard 26.00-31.60, few Utility 23.50-30.00. **COWS:** Utility & High Dressing Cutter 24.25-29.00, Cutters 22.50-27.50, Canners 20.00-25.00. **BULLOCKS:** Few Choice 33.50-38.00, Good 31.50-36.50, few Standard 28.50-33.10, few Utility 26.50-30.00. **BULLS:** Yield Grade No. 1 1000-2000 lbs. 31.35-38.25; yield grade No. 2 800-1700 lbs. 28.50-34.00. **FEEDER CATTLE:** Good 300-700 lbs. feeder steers 28.50-39.00, few Medium 300-600 lbs. 26.00-31.75; Medium & Good 300-500 lbs. feeder heifers 22.00-30.00; Medium & Good 300-600 lbs. feeder bulls 22.00-31.50.

CALVES 4578. Compared with 4132 head last week, and 4630 head a year ago. Vealers unevenly steady. **VEALERS:** Few Prime 57.00-70.00, Choice 48.00-60.00, Good 40.00-52.00, Standard & Good 110-130 lbs. 35.00-45.00, 90-110 lbs. 32.00-42.00, Standard 70-90 lbs. 26.00-37.50, Utility 50-100 lbs.

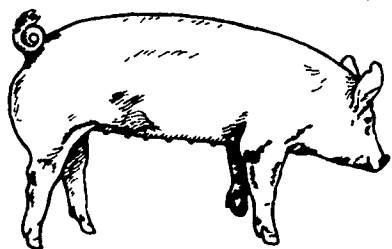
Chambersburg Auction

Chambersburg, Pa.
June 23, 1977

CATTLE 409. Compared with last Thursday's market, slaughter steers strong to 50 cents higher. Slaughter cows \$2 to \$2.25 higher. One Prime slaughter steer at 40.00, few Choice 1000-1200 lbs. No. 2-4 38.25-39.50, Good 35.00-37.50, Standard 30.75-35.00, few Utility 27.75-30.25. Few Choice slaughter heifers 33.00-35.10, few Good 32.25-35.25, Utility 27.00-30.00. Utility & High Dressing Cutter slaughter cows 26.75-29.35, Cutters 25.50-28.25, Canners 22.75-25.75. Few

Good slaughter bullocks 34.60-37.50, Utility 26.60-31.10. Yield Grade No. 1 1100-1900 lbs. slaughter bulls 31.75-37.10, one at 37.85. Few Good 500-700 lbs. feeder steers 32.50-36.50; few Good 400-700 lbs. feeder heifers 24.25-30.00.

CALVES 732. Vealers \$1 to \$4 lower. Few Prime vealers 55.00-57.00, Choice 45.00-53.50, Good 40.00-47.00, Standard & Good 110-130 lbs. 37.00-40.00, 90-110 lbs. 34.00-40.00, Standard 70-90 lbs. 29.00-35.00, Utility 50-90 lbs. 12.00-30.00. Farm calves, holstein bulls 90-120 lbs.



PENN PACKING BUYING STATION

At Green Dragon Livestock Sale
1 mile north of Ephrata, Pa.

**WILL BE CLOSED FOR PLANT VACATION
June 27 to July 10**

Have a Happy Fourth of July!

Will Reopen Mon. July 11

37.00-50.00; holstein heifers 75-100 lbs. 30.00-40.00.

HOGS 112. Barrows & Gilts steady to \$1 lower. US No. 1-2 200-235 lbs. barrows & gilts 45.75-46.50, No. 1-3 200-245 lbs. 44.10-45.35. US No. 1-3 300-450 lbs. sows 32.25-35.25. Boars 22.00-25.75.

FEEDER PIGS 90. US No. 1-3 20-30 lbs. feeder pigs 18.00-24.50 per head, No. 1-3 (one lot) 45 lbs. 34.50 per head.

SHEEP 25. Few Choice 85-

115 lbs. spring slaughter lambs 44.50-49.00, few Good 40-85 lbs. 34.00-34.50.

Danville Auction

Danville, Pa.
June 27, 1977

STEERS: High Choice and Prime 40.00-41.00, Good to Choice 37.50-39.00, Standard to Good 34.00-36.00.

FEEDER STEERS: Good to Choice 35.00-37.50, Stan-

VINTAGE SALES STABLES, INC.

10 mi. East of Lancaster
on Rt. 30
Box 100, Paradise, PA
717-442-4181
or 768-8204

EVERY THURSDAY AT 12 NOON

Hay, Straw & Grain Sale

We have plenty of good buyers each week.
We need consigners.

Contact:

L. Robert Frame, manager

Put it all together!

The Babcock B-300V is rapidly reestablishing herself as the world's top layer. Egg producers with flocks well into production are reporting performance they haven't seen for years... from any layer. In many cases, in fact, they are reporting their best performance ever.

But in this business, potential is only half the game. Babcock backs its bird with the most professional, experienced distribution team in the egg industry.

Consider these features:

PRODUCT

The B-300V rates "excellent" in all key indicators of profitable performance:

- * **EGG PRODUCTION** -- The B-300V peaks high and early, for quick recovery of your costs, and early profitability. Her persistency after peak translates to top egg production.
- * **FEED CONVERSION** -- The B-300V has a proven ability to efficiently convert feed to eggs. From 1966, until 1973 when she was withdrawn from Random Sample Tests, she was the top average feed converter in the industry.
- * **LIVABILITY** -- Field results from all B-300V flocks in production since her reintroduction in late '76 indicate she may have far-and-away the best livability in the business.
- * **EGGSHELL QUALITY** -- Eggshell strength is one of the greatest assets of the 1977 B-300V. Between 1972 and 1976, shell strength of eggs produced by B-300V's has improved by a measured 15% in early lay (36 weeks) and 30.8% in late lay (68 weeks).
- * **RESISTANCE TO STRESS** -- We call it "manageability". The B-300V is a calm, adaptable bird. She resists environmental stresses and recovers rapidly from management problems.

SERVICE

The Babcock distribution team has developed service programs to provide each individual grower or egg producer with the optimum product for his specific operation:

- * **DELIVERY** -- Careful, on-time and courteous.
- * **QUALITY PRODUCTS** -- Birds are hatched and/or grown with Babcock technical assistance. Uniform, healthy chicks and started pullets are vaccinated for your area challenges, and are correctly and fully-developed for their age.
- * **SERVICE** -- Experienced, professional service is available before, during and after delivery.
- * **FLEXIBILITY** -- Babcock distributors are equipped to supply the needs of your operation, whatever the size of your order. Cage or floor grown started pullets are available, depending on the needs of your program.

Talk to a professional about your next replacement flock. The businessmen behind the businessman's bird... a performance package tailored to your chick or started pullet program.

Quality and service. Put it all together with Babcock!

BABCOCK FARMS

Box 285 Lititz, PA (717) 626-8561

* Dave Delaney (717) 898-0234

* Harold James (717) 587-3301

* Walt Weydman (716) 649-5987

* Lee Walker (304) 496-7807

* Glenn Morgan (717) 394-3320

BABCOCK POULTRY FARM, INC.

Box 280

Ithaca, NY (607) 272-5990

* Bob Grunder (607) 387-3941

Please call us collect!

dard to Good 26.00-34.00. 40.00-50.00, Standard 32.00-40.00
COWS: High Choice to Prime 28.85-30.10, Good to Standard 26.00-27.75, Utility 24.00-26.25.
CALVES: High to Choice 50.00-55.00, Good to Choice

GREEN DRAGON LIVESTOCK SALES

1 mile North of Ephrata, PA

COWS COWS COWS BUYERS FROM 3 STATES

Regular consignments from Ray Kennedy, Dale Brewer and Ed Stover consigners.

Lots of good Northern Feeders and Sale EVERY FRIDAY

Bulls, Steers, Slaughter Cows, Lambs and veal calves.

11:00 A.M. - Beef Sale Stockers & Feeder Cows 200 to 250 each week.

12:30 P.M. - Dairy Cows
7:00 P.M. - Small Animal Sale

For Special Sales and Herd Dispersal farm or at our barn or other market info call: Office 717-733-2444.

Walter H. Risser, Proprietor

BABCOCK B-300V CHICKS AND STARTED PULLETS NOW AVAILABLE