

Hog Markets

Lancaster Market

Monday, June 27
 HOGS: Barrows and gilts 2.00 higher.
BARROWS AND GILTS:
 US 1-2 200-240 lb. 48.00-48.50;
 US 1 210-230 lb. 49.25-50.00;
 US 1-3 200-250 lb. 47.25-48.00;
 US 2-3 220-250 lb. 46.50-47.25;
 US 3-4 250-265 lb. 40-44.50

Indianapolis

Thursday, June 30
 2500 - Barrows & Gilts active, 25 to mostly 50 instances higher. US 1-3 200-250 lb. 47.00.
 SOWS: Active, steady prices 25 higher. Few US 300-400 lb. 37.00-38.00.



Lancaster Auction

Wednesday, June 29
 HOGS: Barrows and gilts mostly 2.00 lower.
BARROWS AND GILTS:
 US 1-2 200-240 lb. 46.00-46.35;
 Few US 1 210-230 lb. 47.25-47.50;
 US 2-3 200-240 lb. 45.00-46.00;
 Few 245-260 lb. 44.25-45.00

New Holland Feeder Pig

Wednesday, June 29, 1977
 Feeder Pigs Today 820
 Last Wednesday 1075
 TREND: Compared to last Wednesday feeder pigs 3.00-5.00 higher, instances 10.00 higher on US 2-3. All prices on a per hundred weight basis.
 US 1-2 35-50 lb. 88.00-99.50;
 65-85 lb. 64.00-69.00; US 2-3 25-50 lb. 85.00-94.50; One Lot 32 lb. 100.00; 50-70 lb. 64.00-78.00.

Vintage

Saturday, June 25
 Reported 811 head.
 No. 1 200-240 lbs. 48.00-48.85; No. 2 and 3 200-240 lb. 45.00-48.00; sows 300-600 lbs. 32.00-37.00; boars 200-600 lbs. 28.00-33.00; heavyweights 270-290 lbs. 40.00-43.00; lightweights 150-175 lbs. 38.00-44.00.

Wednesday, June 29
 Reported 993 head.
 No. 2 210-240 lbs. 46.00-47.35; No. 2 and 3 210-240 lbs. 44.00-46.25; sows 325-585 lbs. 32.00-35.00; boars 200-575 lbs. 28.00-34.50; heavyweights 255-270 lbs. 42.25-44.00; lightweights 145-180 lbs. 38.25-42.25.

New Holland

Monday, June 27, 1977
 Hog Auction Today 1944
 Last Monday 1622
 TREND: Barrows and gilts 1.25-1.75 lower than last Monday
BARROWS AND GILTS:
 US 1-2 200-240 lb. 47.50-47.85;
 Few US 1 200-230 lb. 48.00-48.25; US 1-3 200-245 lb. 46.85-47.50; US 2-3 225-250 lb. 46.00-46.35; 250-265 lb. 45.00-46.00;
 US 3-4 250-265 lb. 42.00-43.75,
 One Lot 275 lb. 37.85.

St. Louis

Thursday, June 30
 5000-Barrows & Gilts fairly active, steady to 25 higher.
 US 1-2 200-240 lb. 46.50-46.75; US 1-3 200-250 lb. 46.00-47.50.
 SOWS: Unevenly 50-1.50 lower. US 1-3 300-450 lb. 37.00-37.50, shipment about 100 head around 360 lb. 38.75.

Peoria Auction

Thursday, June 30
 2500 - Barrows & Gilts active, opening fully 50 instances 1.00 higher.
 US 1-2 200-230 lb. 46.50-47.00; US 1-3 200-240 lb. 46.00-47.50.
 SOWS: Weak to 50 lower.
 US 1-3 350-500 lb. 37.50-38.50, some 37.00.

Lancaster Grain Prices

Thursday, June 30
 These prices are made up of the average prices quoted by a number of participating area feed and grain concerns. It should be noted, however, that not every dealer or broker handles each commodity. All prices are per bushel except ear corn and soybean meal which are per ton.
 The average prices quoted Thursday, June 30 are as follows:

	Bid	Offered
Ear Corn	53.00	64.00
Shelled Corn	2.32	2.46
Barley	1.73	1.90
Oats		
Local	1.38½	1.58½
Western	1.82	2.03
Wheat	2.37	2.51
Soybeans	7.16	
Soybean Meal		258.50

+Bid is the price the dealer will buy from the farmer delivered to the mill. Sell is the price the dealer will sell for at his mill.

READ

LANCASTER FARMING FOR FULL MARKET REPORTS

Futures Trading

(Closing Bids as of Thursday, June 30)

	Chicago Cattle	Chicago Hogs	New York Maine Potatoes	Chicago Fresh Eggs
June				
July		47.90		51.40
Aug.	41.50	45.25		
Sept.				58.10
Oct.	40.30	39.05		55.65
Nov.			5.04	58.60
Dec.		40.40	39.50	60.50
Feb.	40.80	38.20		
March			5.88	
April			6.28	
May			7.24	

May - Cattle are down, Hogs are mixed, Potatoes are down, and eggs are mixed.

Market Provided by Commodity Department Reynolds Securities, Inc.

CHICAGO GRAIN FUTURES

(Closing Bids as of Thursday, June 30)

	Wheat	Corn	Soybean	Soybean Meal
July	2.44½	2.20¾	7.61	202.30
Aug.			7.58½	204.70
Sept.	2.51¾	2.26	7.13½	197.70
Oct.				187.30
Nov.			6.86	
Dec.	2.62	2.30½		184.30
Jan.			6.90½	185.50
March	2.70¼	2.38¾		

Trend-Corn is lower, Wheat is lower, Soybeans are lower and Soybean Meal is lower.

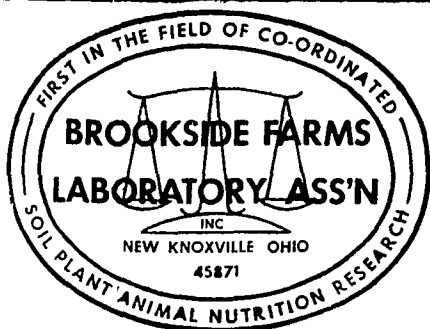
Market Provided by Commodity Department Reynolds Securities, Inc.

HAY, STRAW & CORN -SALE-

Every Friday at 12 Noon.

GREEN DRAGON MARKET & AUCTION

RD No. 3 Ephrata, Pa. 717-733-2334
 1 mile North of Ephrata on N. State St.

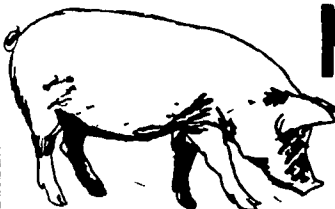


CONTACT:
JOHN CAMPBELL
 Atglen, PA
 (215) 593-5529
GARY MCGEE
 Spring Run, PA
 (717) 349-2340
DAN DERR
 Conowingo, MD.
 (301) 378-3280

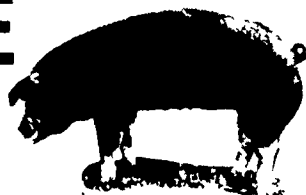
National Reputation - Local Service

ATTENTION HOG PRODUCERS

- Our Hog Department will be open for business as usual on Independence Day, Monday, July 4th.
- Fat hogs will be received between 7:00 A.M. and noon and all consignments are respectfully solicited.
- For further information concerning the July 4th Market call either 397-5136 or Ollie Nagle 626-2583.



NEXT FEEDER PIG SALE TUESDAY, JULY 5 - 1 P. M.



Consign all your feeder pigs to Walter M. Dunlap & Sons where they will be handled by a capable and experienced staff.

Feeder pigs received from 6 A.M. to 11 A.M.

WALTER M. DUNLAP & SONS

LANCASTER STOCK YARDS

Consignors can get state tags at our office, thereby saving 25c marketing expense

For Further Information, Call 717-397-5136

U.S. Inspected Livestock Slaughter

Estimated Daily Livestock Slaughter Under Federal Inspection

	CATTLE	HOGS	SHEEP
Week to date	572,000	905,000	93,000
Same Period Last Week	565,000	980,000	98,000
Same Period Last Year	576,000	860,000	86,000

J.M.HOOBER INC.

SINCE 1895

LANCASTER STOCK YARDS

If you want your hard-earned moneys worth in quality feeder cattle and if you want expert handling of your market cattle then we should get to know each other. Please feel free to call us at any time for up-to-the-minute market information. Remember - when it comes to livestock - J. M. Hooper is Number 1.

OUR BUSINESS IS MORE THAN LIVESTOCK
 OUR BUSINESS IS SERVICE TO YOU

FOR TOP MARKET DOLLARS

J. M. Hooper Steer Division
 Ph: (717) 397-6191, 569-2084

Please Call Us Soon
 J.M. Hooper Hog,
 Calf & Sheep Division
 Ph: (717) 397-6191, 626-5659