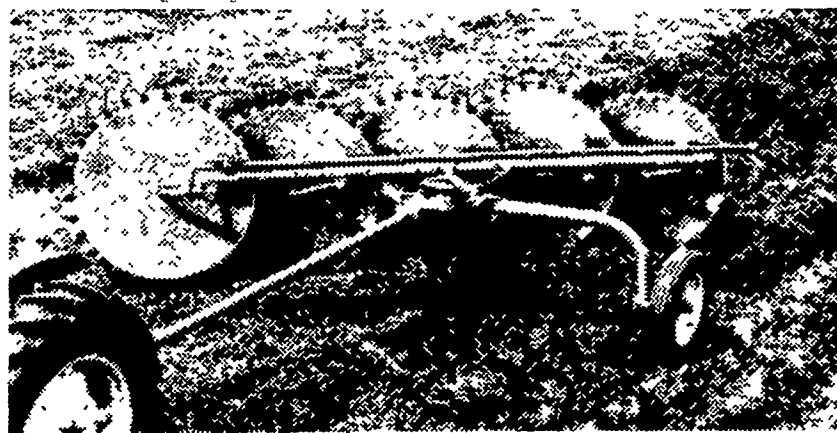


### New Idea's Wheel Rake

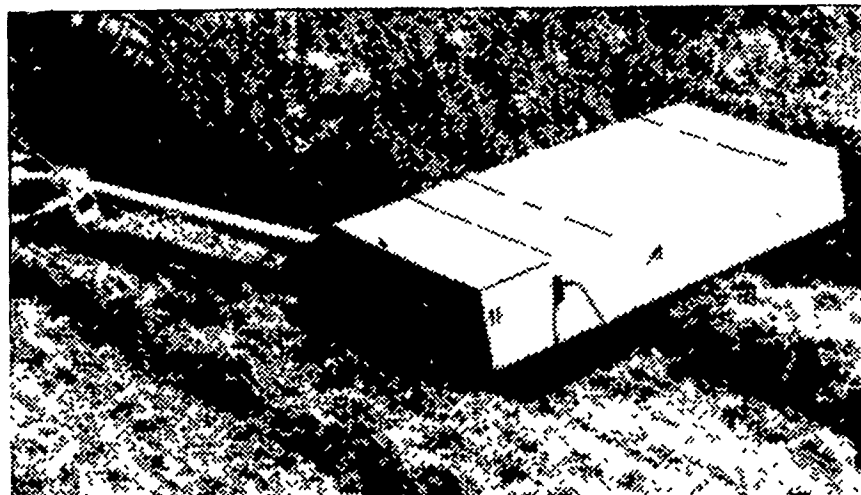


## The quick 'n clean hay machine

Use the Avco New Idea Speed Wheel Rake over any terrain—smooth, uneven, hilly or contoured—and it gets the hay other rakes miss . . . and gets it fast. Raking wheels feature independent spring counter-balancing so teeth follow ground contour. Gentle action builds big fluffy windrows without shattering valuable leaves. You can use the basic 5-wheel rake (8'4" width) for the first cutting, then add 6th or 7th wheel for later cuttings. Stop in and see this low cost rake for yourself!

Costs hundreds of dollars less . . . unsurpassed in heavy, down, tangled hay . . .

## Cut/ditioner

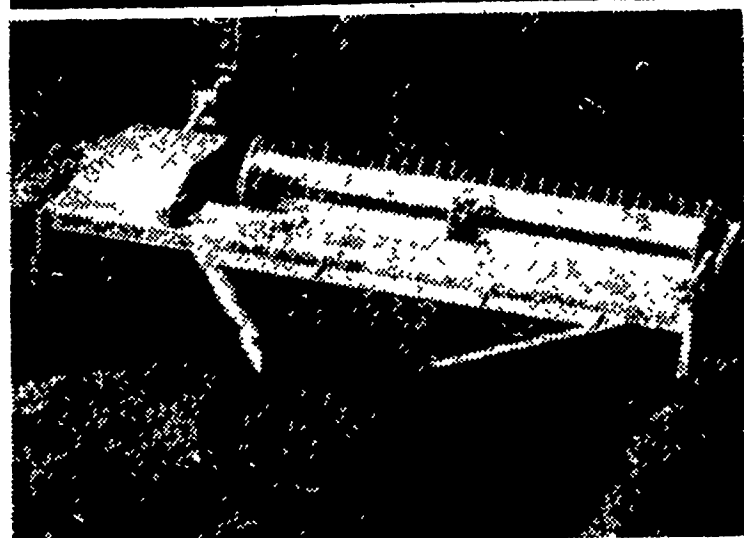


It's a simple machine, with fewer moving parts. Cuts 7-feet wide. Conditions. Makes windrow or swath. When you can't cut hay with a sickle bar, Cut/ditioner it! Non-stop. Plug-free.



*We make your job a little easier.*

### New Idea's Mow/ditioner



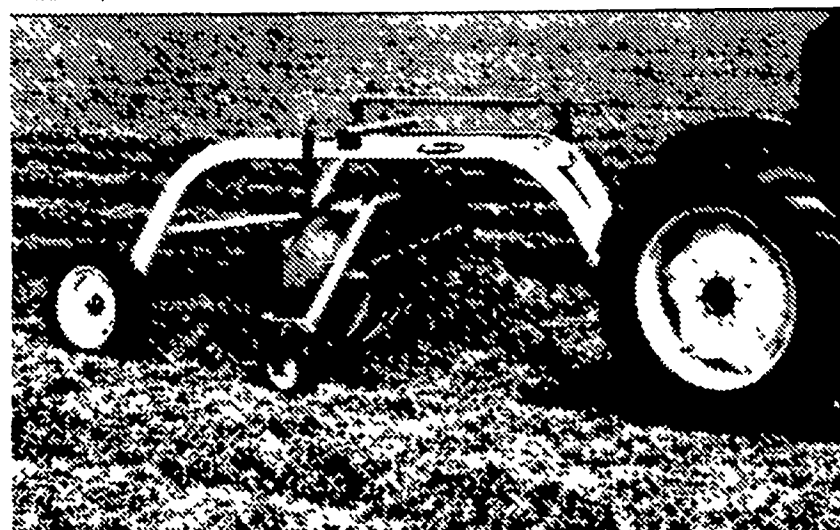
## Cows can tell the difference

That's what farmers tell us. Mow and condition part of your hay with a New Idea Mow/ditioner and the other part with any other mower-conditioner—and your cows will tend to pick the Mow/ditioner hay. Why? Because cows don't like "match-stick" broken stems. They do like soft hay. The kind a New Idea Mow/ditioner makes.

This rugged 9-foot machine is the best all-around machine you can buy for making quality hay. It features a header so well balanced . . . and flotation so well controlled . . . that you avoid excessive knife and guard damage, scalping and poor cutting. Swing-out shields adjust to many positions for swaths or windrows of any desired width.

Come on in and check out New Idea's Mow/ditioner. You'll see the difference in your hay—and chances are, your cows will, too.

### New Idea's Belt Rake



## For turning over a new leaf . . . gently

Steady, positive, clean raking without noisy clatter! This is what you get with the Avco New Idea belt drive rake. Exceptionally clean raking and minimum leaf shattering are the result of the constant ratio between reel speed and forward travel. The smooth, lifting rolling action of the tooth bars builds uniform fluffy windrows . . . windrow fluffiness can be varied by tilting the basket. Long lasting optional rubber Flex-joint teeth available. And, for raking over rough terrain, there's an optional guage wheel that fits on the frame end.

# SEE DEALERS ON OPPOSITE PAGE.

#### Washington County

ALLISON BROS.  
Main St.  
Hickory, Pa.  
412-356-2261

FIELDS IMPLEMENT STORE  
P.O. Box 97  
Eighty Four, Pa.  
412-222-1154

#### Armstrong County

SNYDERS IMPLEMENT STORE  
220 N. Grant Avenue  
Kittanning, Pa.  
412-543-2441

#### Westmoreland County

WILPEN EQUIPMENT  
R. D. 3  
Greensburg, Pa.  
412-837-3777

#### Fayette County

UNIONTOWN FARM EQ. CO.  
P.O. Box 1030  
Uniontown, Pa.  
412 437 9851

#### Indiana County

W. G. SATTERLEE, INC  
Main Street  
Marion Center, Pa.  
412-397-5533

BLAIRSVILLE FARM SERVICE, INC  
R. D. 1 - Box 625  
Blairsville, Pa.  
412-459 9600