



HEY! NEED A LAWN MOWER?

CHECK OUR JUNE SPECIALS

	LIST	SALE PRICE
MF 22 in electric start self-propelled	\$ 279.95	\$ 179
MF 22 in self-propelled.	\$ 179.95	\$ 119
21 in. self-propelled	\$ 249.95	\$ 219
MF 4 horsepower tiller w/reverse	\$ 349.95	\$ 229
Lighty Mac 5 horsepower tiller	\$ 352.95	\$ 289
Lighty Mac 8 horsepower rear tiller	\$ 749.95	\$ 589
MF 5 horsepower 26 in. rider	\$ 639.95	\$ 449
MF tractor 10 horsepower 36 in cut.	\$1079.95	\$ 789
MF tractor 10 horsepower 42 in cut	\$1235.95	\$ 929
21 in rider 8 horsepower 30 in cut	\$ 759.95	\$ 649
5 horsepower rider 26 in. cut	\$ 619.95	\$ 449

GOOD USED EQUIPMENT

5 HP MTD tractor.	\$ 400
5 HP Snapper rider electric start	\$ 550
5 HP Geldon hydrastatic tractor with mower snow blower and tiller	\$ 1700

—WE SERVICE WHAT WE SELL—
COME EARLY, LIMITED SUPPLY!

RESSLER'S SALES & SERVICE

179 West Main St.
Leola, Pa. 17540
717-656-6260

For Sale - 2 piece antique threshing Machine in good condition and working order. Won first prize in Bloomsburg fair farm show in 1957. Phone 717-759-3207.

Ford Power Units 4, 6 and 8 cylinder with clutch reduction
New Gehl machinery in stock
FB99 Blower
CB 800 with hydraulic sharpener
CB 700 with hydraulic sharpener
HA 1000 hay pickup head
4-6-8-10 ton wagons

Special Mention
1 Only
MC 770 7'3" cut
MOWER
CONDITIONER
\$2,950.00

Century Sprayers
Vicon and Pequea Hay Tedders
Custom built manure pit elevators
Zimmerman Elevators
Hawk Bilt Manure Spreaders
Taylorway Tractor and Horse Drawn Disk Harrows
Glencoe, Athens, Howard and Landoll Chisel Plows

ZOOK'S FARM STORE
Box 222 RD2
Honeybrook, PA 19344

For Sale - Irrigation pumps and pipe. High pressure main line type, circle lock couplings 6" \$1.70 per ft., 8" \$2.35 per ft. Other sizes available. Engine and PTO driven pumps. Can deliver to your farm. Gaylord Equipment 201-329-2666 day or night.



USED EQUIPMENT FOR SALE

J.D. 4020 Tractor w-M & W Blower \$9,500.
Oliver Super 99D w-3-71GM \$2,000.
J.D. 435 Tractor \$1,600
J.D. 50 Tractor w-227 Corn Picker \$1,100.
J.D. A Tractor \$800.
A.C. B Tractor w-5' Mower and 2-way plow \$800.
Farmall F20 Tractor \$500.
J.D. 65 Blower \$550.
Ford 309 2-row planter \$450.
(2) Silver Shield Silos each \$500.
J.D. 45 Roundback Combine \$2,200.

TOBIAS
EQUIPMENT CO. INC.

Halifax, Pa. 17032
Phone 717-362-3132

For Sale - Myers blower sprayer with Wisconsin engine, pivots from side to side, \$1500; FMC flatbed tomato harvester, bulk bin trailer, holds 6 boxes. Richard Hess, RD1, Liverpool, Pa. Phone 717-444-3958.

USED EQUIPMENT

JD 440 Dozer
MF 175 Tractor
Farmall H with cultivator
Ford 8 N with loader
JD 720 with plow
Hesston self-propelled windrower
JD 1440 Zero till planter

NEW EQUIPMENT

Hesston PT10 mower conditioner
Hesston PT7 mower conditioner
JD 336 baler with thrower
JD 1209 mower conditioner
JD 4430 Tractor
JD 2440 Tractor
GT Dryers
Pequea Hay Tedders

PIKEVILLE
EQUIPMENT, INC.

R.D. 2
Oley, Pa.
Phone 215-987-6277
Serving the Oley Valley
41 Years.



BETTER HURRY
NEW COMBINES
ARE GOING LIKE

{}{}{}{} {}{}{}{}{}
HOT CAKES



15 Diesel Hydrostatic with float bar and 4 row Cornhead. **SOLD**

15 Diesel Hydrostatic with 13 ft platform and 4 row Cornhead. **SOLD**

COMING IN

15 Diesel Hydrostatic with 13 ft. platform and 4 row Cornhead

USED COMBINES

103 Diesel Hydrostatic with 13 ft platform and 4 row Cornhead. **SOLD**

315 Gas with 1 ft. platform and 2 row Cornhead.

USED TRACTORS

1066D with cab-new tires

100 Hydro-400 hrs.

Super MTA

D. 1010

74 Gas Utility

06-Diesel with duals-excellent

06-Diesel

USED HAY & FORAGE EQUIP.

I.H. 550 Harvester with hay pickup and 2 row Cornhead

J.D. No. 6 Forage Harvester

I.H. No. 20-C Chopper

46 Baler with kicker

440 Baler with Kicker

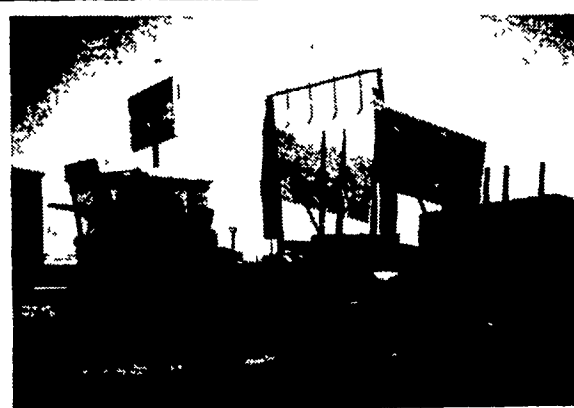
Massey 3 pt. Sickle Bar Mower

NEW IH FORAGE HARVESTERS, FORAGE BOXES, BALERS, RAKES, AND BLOWERS IN STOCK.

— WAIVER OF FINANCE ON
464, 574 and 674 TRACTORS —

C.H. MANIFOLD INC.

New Park, Pa.
717-382-4272



NEW HOLLAND 1048 SELF PROPELLED BALE WAGON EX. COND. - LOW HOURS

AG. IND. EQUIPMENT CO., INC.

R.D. 2 273 East
Rising Sun, Md. 21911
301-658-5568 - 301-398-6132



FOR SALE
New Fuel Tanks
and Pumps

All Types Available
Call for information

AGWAY PETRO.

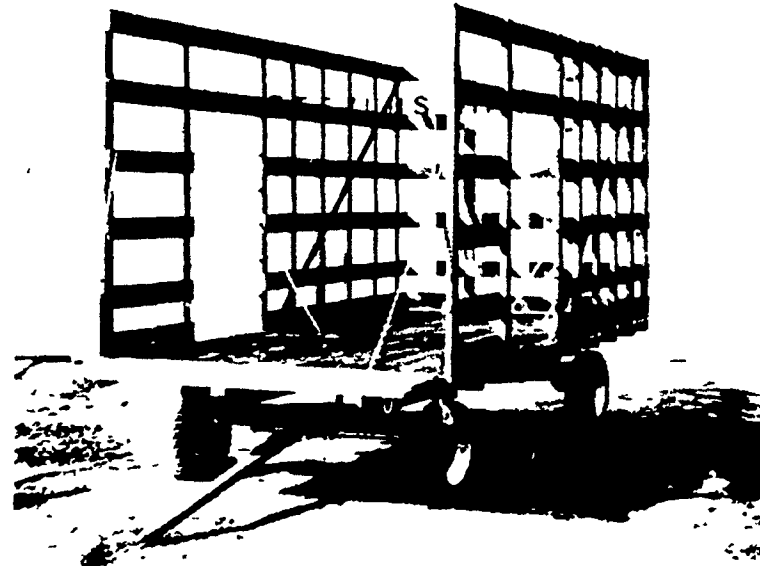
Box 1197, Dillerville,
Rd.
Lancaster, PA
Phone 397-4954

QUALITY HAY WAGONS & FLAT WAGONS

8x8x18

8x16

ON STOCK



8 TON RUNNING GEARS AVAILABLE

STEVENS MANUFACTURING

RD 1

Stevens, Pa.

17578

215-267-6974