

Thomas takes top dollar in Cowtown Rodeo events

WOODSTOWN, N.J. - Stanley Thomas, Woodstown, was the money winner in the Cowtown Rodeo last night. Thomas won both the bare back riding and the bull riding events. Winning does not come new to this Cowtown cowboy. He has won the bare back riding event this season and placed second in the rodeo. Thomas's winnings were \$12 for a mark of 64 in the bare back and 68 in the bull riding.

Three of the 15 calf ropers qualified in that event. Quinn D'Imperio of Cherry Hill, N.J. winning with 11.5 seconds for

Grant Harris of Cowtown, N.J. moved from last week's third position to first this week in the saddle bronc event, with a mark of 66 for \$111.72.

Chris Gerhardt of Sicklerville, N.J. had top time for the second consecutive week for his steer wrestling. With an 8.8 seconds he won \$237.16.

Consistent winner, Lorraine Alexander of Newton, N.J., ran the girl's barrel race in 17.58 seconds for \$174.44. Lorraine is presently leading for the season and will be a top competitor for the cowtown barrel racing trophy this year.

Over 1700 people were on

hand to watch the 97 contestants each try for their share of the \$2,979.20 in prize money.

Complete results of last Saturday's rodeo follow:

Bare Back Bronc Riding
1. Stanley Thomas, Woodstown, N.J.; 2. Jay Stover, Washington, Pa.; 3. Jack Meli, St. Cloud, Fla.; 4. Buck Howard, Woodstown, N.J.

Saddle Bronc Riding
1. Grant Harris, Cowtown, N.J.; 2. Willie Ed Walker; 3. Reid Bergstrum, Miles City, Mt.; 4. Dan Aurand, Lewistown, Pa.

Calf Roping
1. Quinn D'Imperio, Cherry Hill, N.J.; 2. Bud Bramwell, Norwalk, Ct.; 3.

Andy Jackson, Peach Bottom, Pa.; 4. Ground Split between the remaining 12 calf ropers.

Brahma Bull Riding
1. Stanley Thomas, Woodstown, N.J.; 2. Grant Harris, Cowtown, N.J.; 3.

Bob Carrol, Philadelphia, Pa.; 4. J. B. McLamb, North Carolina.

Steer Wrestling
1. Chris Gerhardt, Sicklerville, N.J.; 2. Charles Hayde, Staten Island, N.Y.;

4. Marty Fink, Englewood Cliff, N.J.

Girl's Barrel Race
1. Lorraine Alexander, Newton, N.J.; 2. Par Aurant, Vincentown, N.J.; 3. Judy Clement, Thorofare, N.J.; 4. Kathy Troast, Lebanon, Pa.

Corn contest deadline nears

UNIVERSITY PARK - Corn producers wishing to enter the Five-Acre Corn Club, sponsored by Penn State's Agricultural Extension Service and the Pennsylvania Master Corn Growers Association, should file an official entry form at their County Extension Office by July 1.

Any farmer or farm operator who is 18 years of age or older by August 1, 1977 is eligible to enroll. There is no charge for entering the Corn Club. However, farmers are encouraged to become members of the Pennsylvania Master Corn Growers Association. One entry is allowed per farmer, or farm operator - if more than one farm is involved.

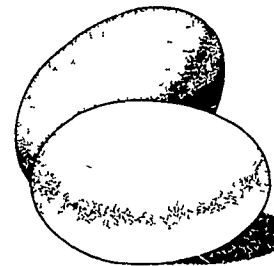
The field must be five acres or more and a complete Penn State soil test must have been taken within the last two years to be eligible for entry. If the corn

is grown in contour strips, two or three strips on the same slope may be used as long as the combined acreage is five acres or more.

The entire acreage must be planted to one variety of corn. Irrigated fields cannot be entered.

There are two harvest classes - an ear corn and shelled grain harvest class. In addition, awards will be made for the highest three year average yield in each of the two classes.

**YOU'RE
IN GREAT
SHAPE
WITH EGGS!**



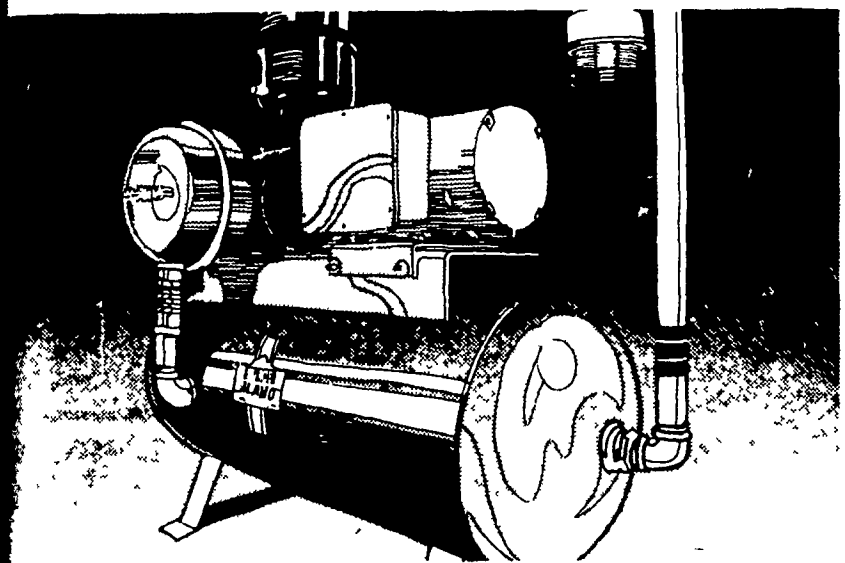
**Joyce
Moyer**

[Continued from Page 56]

Miley, Susan Oonton, Jodi Pettesy, and Tina Low.

Assisting Ruther Miller on the dairy promotion committee were Ed Arnold, Pat Arnold, Rose Marie Brandt, Sandy Lentz, Irene Mase, Brenda Maulfair, and Karen Sellers.

Bigger milk checks start with the right vacuum pump.



A Surge Alamo could improve your production a pint-per-cow per day.

There's probably not a single piece of dairy equipment that's more important to good milk production than an efficient vacuum pump.

Here's why: You can be feeding 'em right, breeding 'em right, doing everything you can to be a better manager, only to have a worn or faulty vacuum pump rob you of thousands of pounds of milk per year.

Ask us to run a levograph on your system soon. If it just needs repairing, we'll give you an estimate. If it needs replacing, we can recommend the right Alamo for the job. Alamo pumps are now available in 20, 40, 60, 75, 100 and 200 cfm models.

It's the pump that sets the pace with such valuable features as continuous flood-type lubrication, exclusive oil reclaiming system, large oil reserve and more. Call us today.

SURGE We make your cows worth more.

ANDY'S FARM SUPPLY INC.
601 E. High St.
Elizabethtown, Pa.
Ph. (717)367-1221

ANN E. HURST
22 East Earl, Pa.
Ph. (215)445-6865

ALD UPPERMAN
33 N. Franklin St.
Lebanon, Pa.
Ph. (717)264-6007

LESTER B. BOLL
RD 1, Litz, Pa.
Ph. (717)626-6198

JIM'S SALES & SERVICE
Oak Bottom RD, Box 37
Quarryville, Pa.
Ph. (717)786-1533

SURGE SALES & SERVICE
WILLIAM A. DOUGLASS
Box 745, RD 1
Sabinsville, Pa. 16943
Ph. (814)628-3541

PEN W. HOSTETTER
RD 2, Annville, Pa.
Ph. (717)867-2896

LONGACRE ELECTRICAL SVC. INC.
Bally, Pa.
Ph. (215)845-2261

H. DANIEL WENGER & BRO. INC.
RD 1, Hamburg, Pa.
Ph. (215)488-1025

ONLY BROCK has all this.

Full Range Of Bin Sizes And Styles
6 models. 28 sizes. 6, 7, 9 and 12 foot diameters. Capacities range from 3 to 55 tons.

Completely Galvanized Bin
Every part, from lid to boot, including legs and braces, is fully galvanized.

Better, Built Bin
Heavier gauge steel, higher tensile steel, better galvanized finish makes BROCK the finest in its field.

New All Out Boot Design
With a new one piece injection molded transition for new easier feed down.

Ground Level Operated Lid
Lid opens or closes easily with the pull of a chain.

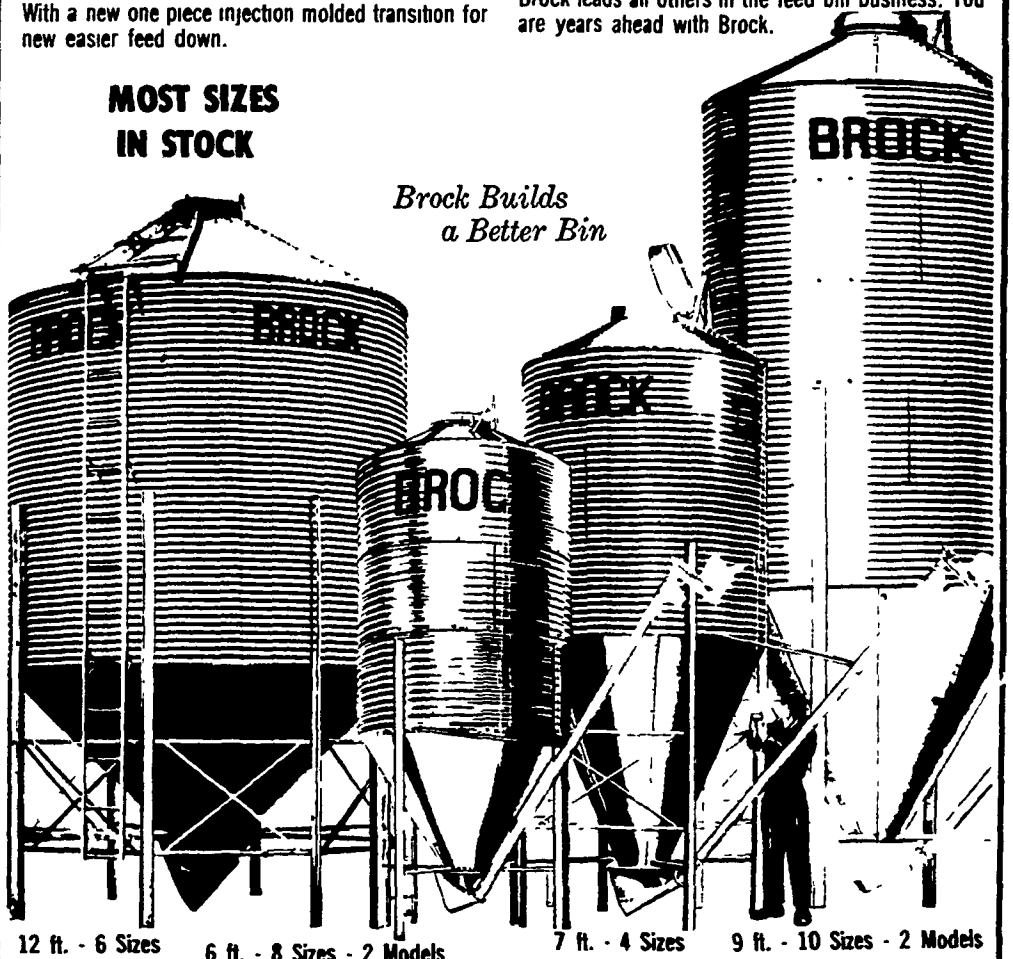
Precision Fabrication
A new plant using the latest manufacturing methods produces a more accurately punched, more beautifully formed, easily erected bin.

Brock Auger Delivery System
A single motor delivery system for poultry, hog and cattle feeding.

Brock Leadership
Brock leads all others in the feed bin business. You are years ahead with Brock.

**MOST SIZES
IN STOCK**

*Brock Builds
a Better Bin*



12 ft. - 6 Sizes 6 ft. - 8 Sizes - 2 Models 7 ft. - 4 Sizes 9 ft. - 10 Sizes - 2 Models

FULL LINE PARTS DEPT.



WE SELL, SERVICE AND INSTALL
**E. M. HERR
EQUIPMENT, INC.**



R.D. 3 Sprecher Road Willow St. Pa. Lancaster Co. 717-464-3321