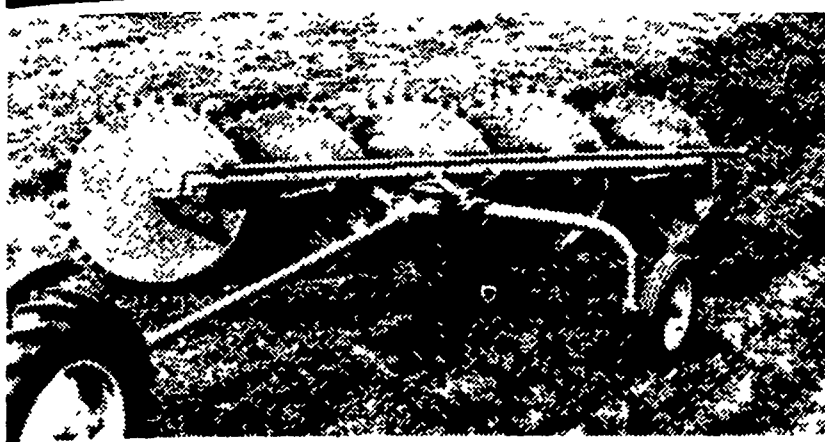


New Idea's Wheel Rake

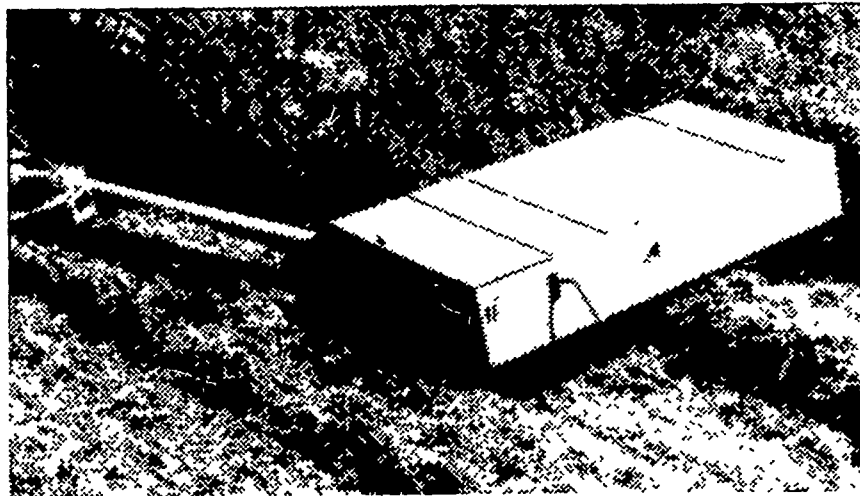


The quick 'n clean hay machine

Use the Avco New Idea Speed Wheel Rake over any terrain—smooth, uneven, hilly or contoured—and it gets the hay other rakes miss . . . and gets it fast. Raking wheels feature independent spring counter-balancing so teeth follow ground contour. Gentle action builds big fluffy windrows without shattering valuable leaves. You can use the basic 5-wheel rake (8'4" width) for the first cutting, then add 6th or 7th wheel for later cuttings. Stop in and see this low cost rake for yourself!

Costs hundreds of dollars less . . . unsurpassed in heavy, down, tangled hay . . .

Cut/ditioner

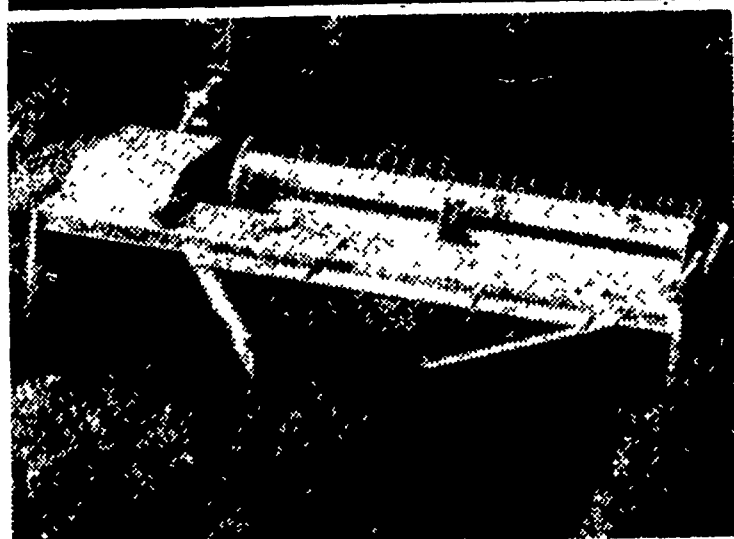


It's a simple machine, with fewer moving parts. Cuts 7-feet wide. Conditions. Makes windrow or swath. When you can't cut hay with a sickle bar, Cut/ditioner! Non-stop. Plug-free.



We make your job a little easier.

New Idea's Mow/ditioner



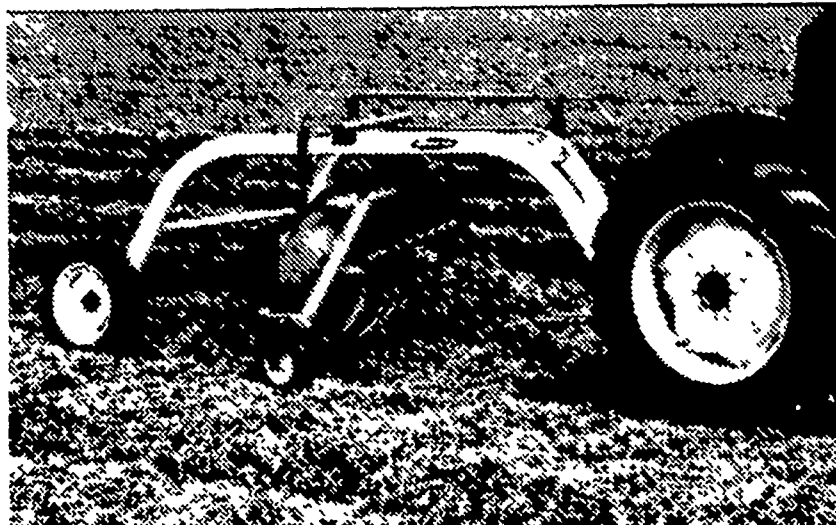
Cows can tell the difference

That's what farmers tell us. Mow and condition part of your hay with a New Idea Mow/ditioner and the other part with any other mower-conditioner—and your cows will tend to pick the Mow/ditioner hay. Why? Because cows don't like "match-stick" broken stems. They do like soft hay. The kind a New Idea Mow/ditioner makes.

This rugged 9-foot machine is the best all-around machine you can buy for making quality hay. It features a header so well balanced . . . and flotation so well controlled . . . that you avoid excessive knife and guard damage, scalping and poor cutting. Swing-out shields adjust to many positions for swaths or windrows of any desired width.

Come on in and check out New Idea's Mow/ditioner. You'll see the difference in your hay—and chances are, your cows will, too.

New Idea's Belt Rake



For turning over a new leaf...gently

Steady, positive, clean raking without noisy clatter! This is what you get with the Avco New Idea belt drive rake. Exceptionally clean raking and minimum leaf shattering are the result of the constant ratio between reel speed and forward travel. The smooth, lifting rolling action of the tooth bars builds uniform fluffy windrows . . . windrow fluffiness can be varied by tilting the basket. Long lasting optional rubber Flex-joint teeth available. And, for raking over rough terrain, there's an optional gauge wheel that fits on the frame end.

SEE DEALERS ON OPPOSITE PAGE.

Washington County

ALLISON BROS.
Main St.
Hickory, Pa.
412 356 2261

FIELDS IMPLEMENT STORE
P O Box 97
Eighty Four, Pa.
412 222-1154

Armstrong County

SNYDERS IMPLEMENT STORE
220 N. Grant Avenue
Kittanning, Pa.
412-543-2441

Westmoreland County

WILPEN EQUIPMENT
R. D. 3
Greensburg, Pa.
412-837 3777

Fayette County

UNIONTOWN FARM EQ. CO.
P.O. Box 1030
Uniontown, Pa.
412-437 9851

Indiana County

W. G. SATTERLEE, INC.
Main Street
Marion Center, Pa.
412-397-5533

BLAIRSVILLE FARM SERVICE, INC
R. D. 1 - Box 625
Blairsville, Pa.
412-459-9600