

Lancaster COUNTY DHIA MONTHLY REPORT

APRIL 1977

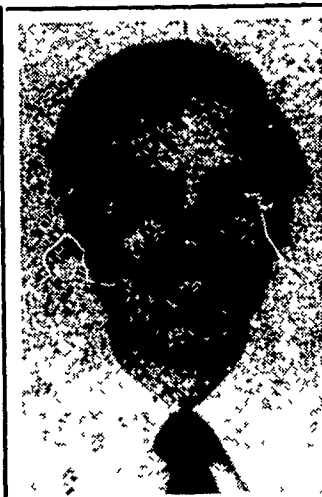
A registered Holstein cow owned by Furry H. Frey, 1343 Gypsy Hill Rd., Lancaster, completed the highest 305 day lactation. Arline produced 25,548 lbs. of milk, 1,035 lbs. of butterfat with a 4.1 per cent test. Second high lactation was completed by a registered Holstein cow owned by Lancaster Mennonite Hospital Farm, Lebanon R5. Unel produced 23,994 lbs. of milk, 933 lbs. of butterfat with a 3.9 per cent test in 305 days.

The herd of Rufus G. Martin, Ephrata R3, had the highest daily butterfat average. This herd of 26 registered Holstein cows averaged 59.3 lbs. of milk, 2.32 lbs. of butterfat with a 3.9 per cent test. The herd of Dan S. Stoltzfus, Mt. Joy, placed second. This herd of 39 registered Holstein cows averaged 60.2 lbs. of milk, 2.30 lbs. of butterfat with a 3.8 per cent test.

OWNER - COW'S NAME	BREED	AGE	DAYS IN MILK	LBS. MILK	% FAT	LBS. FAT
Furry H. Frey						
Arline	RH	5-3	305	25,548	4.1	1,035
Milly	RH	5-7	305	17,836	3.9	693
Lancaster Mennonite Hospital Farm						
Unel 42	RH	5-5	305	23,994	3.9	933
Rmudy 89	RH	8-6	305	18,828	3.9	726
Kenneth L. Beiler						
Leonora	RH	9-6	305	25,855	3.4	876
Posie	RH	6-6	305	21,226	3.5	747
Nit	RH	6-2	305	18,591	3.6	675
Robert H. Kauffman						
Jem	RH	7-8	305	22,578	3.8	867
Sparkie	RH	3-8	305	18,001	4.3	774
Gypsie	RH	6-9	305	17,665	4.0	708
Donna	RH	4-3	304	14,767	4.4	654
Dan S. Stoltzfus						
Carolyn	RH	4-5	305	20,307	4.2	862
Julie	RH	3-3	305	16,976	4.1	695
David B. King						
Pearl	RH	6-0	305	21,211	4.0	854
Meadow Vista Farm						
Sweetie	RH	6-8	305	19,664	4.3	852
Audrey	RH	6-2	305	21,602	3.5	749
Drizzle	RH	5-1	305	18,430	4.0	740
Ada	RH	4-0	296	16,645	4.0	659
Edgefield Farm No. 2						
Cookie	RH	6-7	305	19,755	4.2	835
Clyde W. Martin						
Empress	RH	5-0	305	19,047	4.3	824
Twila	RH	5-6	305	18,245	3.9	704
Princess	RH	3-8	305	20,682	3.2	669
Erla	RH	5-7	305	17,956	3.7	656
Sorry	RH	8-8	305	16,273	4.0	654
Nora	RH	3-8	305	17,663	3.7	646
Samuel F. Long						
Kim	RH	7-10	305	20,046	4.1	823
Vernon R. Umble						
Margret	RH	8-4	305	19,590	4.2	817
Karen	RH	6-7	305	18,851	4.1	780
Dee	RH	3-8	305	17,504	4.0	700
Polly	RH	3-10	305	17,621	3.7	659
W. Eugene Witwer						
Mistres	RH	6-6	305	21,504	3.8	815
John M. Harnish						
Coleen	RH	4-6	305	24,730	3.3	810
Ellen	RH	6-8	248	17,469	3.9	685
Daisy	RH	3-9	305	19,604	3.4	658
John A. Harsh						
Holly	RH	5-7	302	16,248	5.0	808
Don Ranck						
54 Pat	RH	6-7	305	21,124	3.7	789
77 Goofy	RH	5-7	305	19,847	3.4	682
James L. High						
Freda	RH	6-5	305	20,375	3.9	789
Ruth	RH	9-11	305	21,592	3.5	765
Lady	RH	4-2	305	19,551	3.4	656
Elam P. Bollinger						
Gateway	RH	3-6	305	20,550	3.8	787
Pompoms	RH	6-2	305	16,016	4.5	725
Dorothy	RH	6-5	305	19,218	3.7	709
Ben K. Stoltzfus						
Hanna	GrH	4-2	305	20,078	3.9	787
Polly	RH	3-3	305	18,735	3.7	695
Samuel M. Martin Jr.						
Holly	GrH	6-9	305	18,809	4.2	784
Beverly	GrH	4-10	305	15,456	4.4	676
Lucy	GrH	3-10	305	15,834	4.2	671
Tootsie	GrH	5-9	305	17,217	3.8	658
Robert Kauffman Jr.						
Sally	RH	8-0	303	16,117	4.9	784
Missy	GrH	4-4	305	20,057	3.9	783
Speedy	RH	6-2	305	18,725	4.1	775
Elsie	RH	3-0	305	18,830	4.0	748
Adell	RH	3-1	285	14,968	4.8	716
Pat	RH	4-0	305	18,595	3.8	704
Sarah	RH	4-3	305	17,005	4.1	704
Jody	RH	3-2	305	16,822	4.1	696

Raymond M. Weaver	RH	5-9	305	17,984	4.3	777
Calvin D. Beiler						
Belle	RH	6-3	305	20,873	3.7	772
Wanda	RH	6-7	305	20,081	3.6	725
Rhelda & Lynn Royer						
Bubbles	RH	11-0	305	19,468	4.0	769
L. Luck	RH	4-5	305	13,913	4.8	670
J. E. & Shirley Hershey						
Marian	RH	6-2	305	17,547	4.4	768
Tillie	RH	5-2	305	19,093	3.8	731
Karl W. Herr						
Peggy	RH	5-0	305	20,630	3.7	765
Dixie	GrH	7-10	305	-17,972	3.9	698
Ellis D. Kreider						
84	GrH	4-7	305	19,573	3.9	765
52	GrH	8-2	305	20,686	3.6	750
Conewago View Farms						
Lucy	RH	6-4	305	17,702	4.3	764
Leila	RH	5-5	305	17,490	4.0	708
Mable	RH	5-4	305	14,474	4.6	666
Amos B. Lantz						
Polite	RH	6-5	305	21,267	3.6	763
Robert F. & Joan B. Book						
Sally	RH	4-9	305	19,414	3.9	763
Cutie	RH	3-7	305	20,292	3.5	709
Nelson E. Martin						
Bottle	RH	6-4	305	19,539	3.9	760
Barbara	RH	6-10	305	19,095	3.6	683
Parke H. Ranck						
Minnie	RH	7-5	292	15,842	4.8	760
Rose	RH	6-6	251	17,858	3.6	651
Earl W. Weaver						
Patricia	GrH	4-4	298	19,206	3.9	758
Kandy	RH	4-7	305	13,807	4.7	645
Leona	GrH	5-10	305	19,136	3.3	639
Edgefield Farms						
Sue	GrH	5-4	286	20,457	3.7	756
Kenneth D. Myer						
Goldie	RH	3-8	305	19,622	3.9	756
Roxanne	RH	4-0	305	18,191	3.9	709
Paul V. Nissley						
Beth	GrH	6-1	305	22,152	3.4	755
Rae	GrH	8-2	305	16,697	4.1	684
Kim	RH	9-2	302	16,664	3.8	636

(Continued on Page 88)



Facts for dairymen

By Alan Bair
Assoc. County Agent
Lancaster, Pa.

If you have been so busy planting corn and making hay that you haven't had time to look at your recent feed bills, you better go take a look. Protein prices, particularly soybean oil meal prices have risen sharply over the past several months.

At these current prices for protein supplementation, you should make certain that you are not overfeeding protein. This can best be done through sound feed programming, such as that available from our Penn State Forage Testing Service.

You do have several alternatives to consider in adjusting feeding programs to ease the high cost burden. One of these is to replace at least part of the low-protein forages such as corn silage, grass or mixed mainly grass forage with higher protein material. If you have it available, feed more legume or mixed mainly legume forages. Small grain forages are also high in protein if harvested in the pre-flower stage.

When only high protein forages are fed a 12-14 per cent grain mix is generally sufficient. A 16-18 per cent feed may be needed when only 50 per cent of the hay-equivalent is furnished by high protein forages.

I know from talking with you that many of you are using a 16-20 per cent protein level in your grain mix, when only 12-14 per cent is needed. Most recommendations include margins of safety.

You do not need to add more. Check with our Forage Testing Service to be sure you are not overfeeding high priced protein.

xxx

"Are the ends of your cows teats normal?" It's absolutely amazing to me how often you can't answer this simple question about the most important part of the cow. The teat end is the cows first line of defense against disease organisms and one of the more visible indicators of physical stress as a cause of mastitis.

In our experience teat end damage can have several causes. While talking recently with Raymond Hoover, a good dairyman from the White House area, his concern was teat damage due to extremely cold weather. This can be a cause of teat end damage, but more often than not, the cold is simply the stress that brings the damage to your attention.

Most teat end damage is caused by malfunction or missusage of the milking machine. Some teat end damage can also result from teat dips and the environment. Obviously we are not going to recommend that you stop using milking machines or teat dips. The point is that when you first observe teat end damage, find the cause and correct the situation immediately. It's a losing battle to fight the cause of mastitis without first correcting the situation that is damaging the teat ends.

LOOK FOR

NEW IDEA

- ADAMS CO.**
O.C. RICE, INC.
Biglerville, PA
717-677-8135
- LANCASTER CO.**
ROY H. BUCH, INC
Ephrata, RD2
717-859-2441
A.B.C. GROFF, INC
New Holland
717-354-4191
- BERKS CO.**
N.H. FLICKER & SONS INC.
MAXATAWNY
Ph 215-683-7252
- LANCASHIRE CO.**
LANDIS BROS. INC
Lancaster
717-393-3906
- STANLEY A. KLOPP INC.**
Bernville
Ph 215-488-1500
- LONGENECKER FARM SUPPLY**
Rheams
717-367-3590
- MILLER EQUIPMENT**
Bechtelsville
Ph. 215-845-2911
- N.G. HERSHEY & SON**
Manheim
717-665-2271
- SHARTLESVILLE FARM SERVICE**
RD 1, Hamburg, Pa.
215-488-1025
H. Daniel Wenger, Prop.
- LEHIGH CO.**
C.J. WONSIDLER BROS
Jct. Rt. 309 and 100
Pleasant Corners, Pa
215-767-7611
- ZIMMERMAN'S FARM SERVICE**
Bethel
Ph 717-933-4114
- LYCOMING CO.**
RICE FARM SUPPLY, INC
Jersey Shore, Pa.
717-398-1391
- BRADFORD CO.**
CARL L. PIERCE
RD 2
Columbia Cross Roads, PA
717-297-3513
- MONTGOMERY CO.**
WYNNE'S GARAGE
Canton, PA
717-673-8456
- WENTZ FARM SUPPLIES**
Route 29
Palmer, PA
215-679-7164
- BUCKS CO.**
C.J. WONSIDLER BROTHERS
Trumbauersville Road
Quakertown, PA 18951
215-536-1935
- NORTHAMPTON CO.**
GEORGE V. SEIPLE & SON
Easton, PA
215-258-7146
- PAUL HISTAND CO., INC.**
397 North Main Street
Doylstown, PA
215-348-9041
- NORTHUMBERLAND CO.**
MECKLEY'S LIMESTONE
PRODUCTS, INC.
Herdon, Pa.
717-758-3915
- CECIL CO.**
AG INDUSTRIAL EQUIPMENT CO.
Rising Sun, Md.
301-658-5568
- SCHUYLKILL CO.**
L.L. ECKROTH FARM EQUIP., INC.
New Ringgold
717-943-2367
- CHESTER CO.**
CHAS. J. MCCOMSEY & SONS
Hickory Hill, PA
215-932-2615
- STANLEY'S FARM SERVICE**
RD, Kingertown
717-648-2088
- STOLTZFUS FARM SERVICE**
Cochranville, PA
215-593-5280
- SNYDER CO.**
ROYER'S FARM SERVICE
RD1, Winfield
New Berlin - Middleburg Hwy
717-837-3201
- M.S. YEARSLEY & SONS**
West Chester
215-696-2990
- TIOGA CO.**
CANYON IMPLEMENT, INC
Mansfield, Pa.
717-24-2731
- COLUMBIA CO.**
ORANGEVILLE FARM EQUIPMENT
Orangeville, PA
717-683-5311
- WAYNE CO.**
MARSHALL MACHINERY
Honesdale, PA
717-729-7117
- WILLIAM F. WELLIVER**
Jerseytown, Pa.
717-437-2430
- WYOMING CO.**
ACE-JURISTA, INC.
Tunkhannock, Pa
717-836-2610
- CUMBERLAND CO.**
ERNEST SHOVER
FARM EQUIPMENT
19 West South St.,
Carlisle, PA
717-249-2239
- DAUPHIN CO.**
SWEIGARD BROS.
RD3, Halifax, PA
Ph. 717-896-3414
- FRANKLIN CO.**
CHAMBERSBURG FARM SERVICE,
INC.
975 S. Main St.,
Chambersburg, PA
717-264-3533
- YORK CO.**
AIRVILLE FARM SERVICE
Airville, PA
717-862-3358
- A.C. HEISEY FARM EQUIPT. INC.**
RD 1, Jonestown
717-865-4526
- UMBERGERS MILL**
RD4, Lebanon (Fontana)
717-867-5161
- MEYERS IMPLEMENTS, INC.**
Greencastle, PA
717-597-2176
- ANDERSON BROTHERS**
New Park, PA
717-382-4272
- LEBANON CO.**
GEORGE N. GROSS, INC
RD2, Dover, Pa
717-292-1673
- ROBINSON BROTHERS**
Carroll, Md.
Ph 717-456-5215
- WALTER G. COALE, INC**
Churchville, MD 21028
301-734-7722