

Livestock market and auction news

Chambersburg Auction

May 26, 1977
CATTLE 430. Compared with last Thursday's market, slaughter steers 25 cents to 75 cents lower. Slaughter cows steady to \$1.25 lower. Slaughter bulls 25 cents lower. Choice 950-1250 lbs. 2-slaughter steers 38.75-40.75, Good 35.75-38.50, Standard 32.75-35.00, few Utility 30.60-32.00. Few Choice slaughter heifers 35.10-36.35, Good 33.50-35.60, few Standard 31.00-33.50. Utility and High Dressing Cutter slaughter cows 27.75-30.25, few to 32.00, Cutters 26.75-28.50, Canners 23.75-26.00, Shells down to 20.35. Few Good slaughter bullocks 25.00-36.75, few Standard 22.25-34.00, few Utility 29.75-32.35. Yield Grade No. 1, 1000-1700 lbs. slaughter bulls 33.75-35.85, individual at 37.10. Good and Choice 300-600 lbs. feeder steers 31.00-39.50. Medium and Good 275-500 lbs. feeder heifers 23.50-32.50.
CALVES 579. Vealers grading Choice and Prime \$1 to mostly \$6 to \$9, higher, Standard and Good \$4 to \$9 lower. Prime vealers 68.00-75.00, Choice 53.00-69.00, Good 40.00-50.00, Standard and Good 110-130 lbs. 35.00-44.00, 90-110 lbs. 32.00-37.00, Standard 70-90 lbs. 27.00-33.00, Utility 50-85 lbs. 20.00-30.00. Farm Calves: Holstein bulls 90-120 lbs. 34.00-52.00; Holstein heifers 90-115 lbs. 34.00-42.00.
HOGS 120. Barrows and gilts 25 cents to 75 cents lower. US No. 1-2 200-220 lbs. barrows and gilts 44.00-45.00.

No. 1-3 200-235 lbs. 42.85-43.75, No. 2-3 230-250 lbs. 42.00-43.00. US No. 1-3 300-600 lbs. sows 28.25-32.00.

FEEDER PIGS 86. US No. 1-3 20-30 lbs. feeder pigs 17.50-25.00 per head, No. 1-3 35-50 lbs. 29.00-36.50 per head.

SHEEP 100. Choice 75-100 spring slaughter lambs 49.00-56.50, Good 40-80 lbs. 38.00-48.00. Slaughter ewes 11.50-19.50.

Valley Livestock

Valley Stockyards, Inc.
Athens, Pa.

Monday, June 27
 Reported receipts of 92 cows, 28 bulls, 249 calves, 81 hogs, 16 steers, 33 heifer, and 16 sheep. Cattle market good, calf market steady to higher than last week's market.

Veals 45.00-59.00; bobs 30.00-42.00; grassers and feeders 25.00-36.00; lambs 30.00-56.00; sheep 12.00-20.00; hogs 25.00-41.00; pigs 12.00-30.00; heifers 25.00-31.75; steers 30.00-38.00; bulls 28.00-36.00; cows, good 28.00-32.50; cows, med. 25.50-27.00; cows, poor or small 20.00-24.00; horses, small 20.00-30.00; ponies 8.00-20.00; goats 18.00-30.00.

New Holland Dairy

New Holland Sales Stables
Wednesday, June 1
 Market stronger than last week's market.

Reported receipts of 97 cows, 18 heifers, and six bulls.

Load of New York state fresh 590-900, springers 600-1150; load of Wisconsin fresh 600-820; two loads of Pennsylvania fresh 530-700, 610-1720; load of Butler County fresh 445-950, springers 415-850.

Local cows 450-700; springing heifers 425-625; bred heifers 490-620; bulls 175-500.

New Holland Horse

New Holland Sales Stables
Monday, May 30

Reported receipts of 370 head of horses, mules and ponies. Market steady with last week's market.

Local driving horses 150-995; local riding horses 150-325; better horses 350-610; one registered quarter horse 1000; lightweight killers 20-24; heavyweight killers 31-33; mares 20-55; colts 10-20; geldings 20-50; larger ponies 60-140.

Carlisle Auction

May 31, 1977

CATTLE 190. Compared with last Tuesday's market: One Choice slaughter steer at 41.25, Good 36.60-38.35, Standard 34.75-36.00, Utility 27.50-32.75. Good slaughter heifers 33.85-36.10, Standard 31.75-32.25, Utility 27.75-28.50. Utility and High Dressing-Cutter slaughter cows 26.75-28.00, Cutters 23.85-27.00, Canners 20.75-24.00, Shells down to 18.00. Good slaughter bullocks 34.00-37.50, Standard 28.60-33.00.

CALVES 143. Good vealers 47.00-54.00, Standard and Good 110-130 lbs. 37.50-45.50, 90-115 lbs. 30.00-38.00.

HOGS 254. US No. 1-2 barrows and gilts 43.75-46.10, No. 1-3 42.10-43.75, No. 2-3 40.00-41.75, No. 2-4 270-340 lbs. 33.25-34.85. US No. 1-3 300-600 lbs. sows 33.50-35.00, No. 2-3 27.50-29.00. Boars 25.50-28.00.

FEEDER PIGS 288. US No. 1-3 25-35 lbs. feeder pigs 19.00-27.00 per head, No. 1-3 35-50 lbs. 30.00-35.50, Utility 20-30 lbs. 13.00-16.50 per head.

SHEEP 52. Good spring slaughter lambs 49.00-63.00, Utility 42.00-46.00. Slaughter ewes 9.50-17.00.

Des Moines

June 1, 1977

Compared to Tuesday's close, fresh prok cut trade closing slow, demand moderate to light. Fresh loins steady to 1.00 higher; picnics 2.50-5.50 lower; Boston butts not fully established: skinned hams steady to 3.00 lower, mostly 1.00-3.00 lower: bellies steady to 1.00 lower: Spareribs not established.

Fresh Prok Cuts

Loins 14-DN lbs. 85.00-93.00 export steady 14-17 lbs. 84.00-85.00 1.00 higher

Picnic 4-8 lbs. 44.00 5.50 lower. 8&up lbs. 45.25 2.50 lower.

Boston butts part load 4-8 lbs. 72.75

Spareribs 3-DN lbs. 100.00 frozen

Skinned hams 14-17 lbs. 70.00-71.00; 7&up export 17-20 lbs. 70.00 1.00-3.00 lower; 20-26 lbs. 70.00: load 71.00 1.00 lower; 26 & up lbs. 68.00-69.00 steady to 1.00 lower.

Bellies, SDLS 12-14 lbs. 55.00 1.00 higher; 16-18 lbs. 53.00 steady; 18-20 lbs. 51.00.

Pork trim 50 lean 39.25 fresh; 38.75 frozen 80 lean 65.00 fresh: 67.25 frozen

BNLS picnic 68.00 fresh: 69.00 frozen

Compared to Tuesday's close, beef trade closed moderate to slow. Demand moderate to light. Steer beef steady to 1.00 lower. Heifer beef steady to 50 lower. Primal beef cuts, steer rounds steady, arm chucks steady to 2.00 higher. No comparable cow beef sales. Sales on 56 loads steer and heifer beef confirmed. 1 cow beef load.

Steer Beef

34 Confirmed Loads
 Choice 3 600-800 lbs. 62.75-63.75, mostly 63.75 steady to 1.00 lower.

Choice 2 600-800 lbs. 64.75
 Choice 4 600-900 lbs. 60.00 steady

Good 2-3 500-800 lbs. 59.25 steady.

Heifer Beef

22 Confirmed Loads
 Choice 3 500-700 lbs. 62.25-62.75, mostly 62.25 50 lower
 Good 2-3 500-700 lbs. 58.25 steady

Cow Beef

1 Confirmed Load
 Utility (BRKG) (NTHR) 3-4 47.00

Cow Beef

1 Confirmed Load
 Choice 3
 Pinal Beef Cuts
 15 Confirmed Loads
 Hinds (steer) 145-190 lbs. 83.50 load.

Fores 130-210 lbs. 47.50-48.00

Arm Chucks 75-120 lbs. 44.00-46.00 steady to 2.00 higher.

Rounds (Steer) 70-95 lbs. 68.00 steady

Short Plates 25.00 load
 Beef Trimmings

12 Confirmed Loads
 Beef Trimmings - 50 Chem Lean (Fresh) 29.00

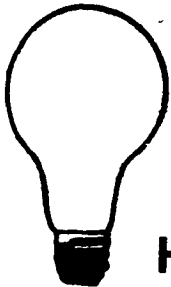
Good Primal Beef Cuts
 2 Confirmed LOADS

Forequarters 46.50



SCARLET SAGE

POULTRYMEN



FOR A
BRIGHT IDEA

CALL
HALLER ELECTRIC, INC.

Route 2
 Denver, Pa. 17517

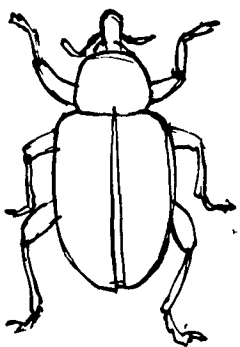
SPECIALIZING IN POULTRY HOUSES, ALSO GRAIN DRYERS

SEE JOHN FOR ALL YOUR WIRING NEEDS.

CALL
215-267-7610

Alfalfa weevil control-

SUPRACIDE 2E Insecticide for the control of ALFALFA WEEVIL, APHIDS AND OTHER INSECTS.



In 7 years of testing, SUPRACIDE has demonstrated a higher kill rate and longer control than most of the other insecticides now being used on Alfalfa.

It has been used for the control of Leaf Hoppers and Lygus Bugs also.

MELVIN R. WEAVER

RD1 Box 529 Manheim, PA
 PH: 717-569-6576

GREEN DRAGON LIVESTOCK SALES

1 mile North of Ephrata, PA



COWS COWS COWS
 BUYERS FROM 3 STATES

SPECIAL FOR JUNE 10th SALE

1 herd from Clarion County consisting of 21 Cows and 11 Heifers, mostly fresh.

Regular consignments from Ray Kyper, Bob Kennedy, Dale Brewer and Ed Stover plus local consigners.

Lots of good Northern Feeders and Stockers.

SALE EVERY FRIDAY

Bulls, Steers, Slaughter Cows, Lambs and veal calves

11:00 A.M. - Beef Sale Stockers & Feeders 200 to 250 each week.

12:30 P.M. - Dairy Cows
 7:00 P.M. - Small Animal Sale

For Special Sales and Herd Dispersals on the farm or at our barn or other market information call: Office 717-733-2444.

Walter H. Risser, Proprietor

We would be happy to have you as a Customer . . .

S. K. SHOTZBERGER, INC.

LIVESTOCK TRANSPORTATION

Gene Zwally, President
 Marvin Johns, Secy.-Treasurer
 P.O. Box 925, Lancaster, PA 17604
 Phone: 393-4641 (day or night)

L & M FUR & WOOLEN ENTERPRISE



Quality Electrified Moultons & Furs

Tannery Direct Dist. - Wholesale & Retail

Check our Quality, Price & Services!

- Woolen Hosp. Pads - Natural & All Colors
- Pa. Largest Selection of Woolen Products
- Sheepskin Coats at Reasonable Prices
- See Us At Meadowbrook Market in Leola

117 W. Summit St., Mohnton, Pa.
 215-777-2465

Hours: Mon.-Fri. 9-8:30; Sat. 9-5

VINTAGE SALES STABLES, INC.

10 mi. East of Lancaster
 on Rt. 30
 Box 100, Paradise, PA
 717-442-4181
 or 768-8204

EVERY THURSDAY AT 12 NOON

Hay, Straw & Grain Sale

We have plenty of good buyers each week.
 We need consigners.

Contact:

L. Robert Frame, manager