

York County DHIA

(Continued from Page 122)

Iris	3	6-3	305	16,934	3.6	614
Rosie	3	3-1	305	18,731	3.8	710
Milly	3	3	303	15,465	3.7	572
Pat	3	2	305	16,355	3.7	601
T Edwin Johnson						
Star C	3	6-5	264	12,587	4.5	568
Hidden Springs Farm						
Franny	3	8-4	296	18,482	3.5	651
Lynn	3	7-2	151	10,314	4.8	500
Barb	3	6-4	305	18,911	3.7	706
Maria	3	6-3	286	19,501	3.7	714
Susan	3	9-8	300	14,819	4.7	692
Wenona	3	4-7	280	15,904	4.7	752
Erin	3	4-2	305	16,109	4.1	661
Margo	3	4-3	305	19,624	3.6	703
J H & M B Hushon						
73	3	7	305	15,002	4.3	649
106	3	6-7	305	13,851	4.2	588
22E	3	4-11	305	14,648	3.7	540
110 E	3	3-9	305	12,738	4.2	541
76	3	2-9	305	14,958	3.6	535
Adrian Rinehart						
80	3	7-5	305	14,491	3.6	522
1	3	3-3	305	14,572	3.9	572
Robert R Stewart						
Joel	3	6-5	305	19,106	3.7	714
Mindy	3	4-6	305	18,351	3.4	620
Milly	3	4-5	254	13,656	3.9	537
Reta	3	3-5	305	13,162	4.5	590
Cinda	3	2-10	305	15,481	3.7	574
Betty	3	6-9	305	18,915	3.7	703
Boots	3	5-8	305	17,175	3.7	636
Rhoda	3	4-8	305	18,642	3.4	636
Carla	3	4-4	305	22,775	2.8	635
Joyce	3	4-6	297	17,727	3.2	560
H E Petrow & Sons						
Carman	3	6-6	305	18,628	4.1	756
Flossy	3	4-8	305	15,889	3.9	620
Rodman C Thompson						
Sophia	3	3-4	305	17,298	3.9	669
Stump Acres						
Jill	3	11-2	305	16,192	4.0	651
Jessie	3	7-11	305	21,846	4.1	885
Julie	3	7-5	305	15,649	3.7	574
Gilda	3	6	303	16,553	4.2	692
Vera	3	4-7	305	15,879	4.6	731
Vina	3	3-10	305	15,357	3.3	502
Marleta	3	2-11	305	13,479	4.1	550
Jetleah	3	3-1	305	15,880	3.7	587
Thomas A Boyer						
Odessa	3	6-5	236	14,702	3.7	542
Pebbles	3	4-8	305	20,721	4.1	844
Ruby	3	3-7	253	20,782	3.3	678
Earl Fuhrman						
Della	3	9-10	305	15,090	4.5	674

Nell	3	7-5	305	13,856	3.7	518
Juno	3	2-6	305	13,657	3.8	514
Guy A Leader & Sons						
Jill	2	3-5	304	12,784	5.5	704
Camay	2	3-10	305	13,474	5.1	692
Annabel	2	3-4	305	9,806	5.6	545
Bess	2	2-7	305	14,643	4.8	706
Dot	2	2	301	10,726	4.9	526
Vincent C Webb						
49	3	7-10	305	15,791	3.5	554
91	3	7-2	305	15,805	3.8	602
144	3	6-6	305	16,158	3.4	626
3A	3	6-8	305	16,892	3.6	608
158	3	6-6	305	16,590	3.4	571
166	3	4-8	305	19,183	3.9	745
Roy & Frank Feeser						
Holly	3	8-4	305	14,890	3.5	521
Lady	3	7-6	305	15,592	3.5	544
Jay L Hoover						
32	3	5-1	305	16,003	4.0	643
12	3	5-1	305	13,590	4.1	557
Fred Sprenkle						
Aunt	3	5-6	298	16,812	3.6	610
Noreen	3	3-3	305	14,625	3.8	556
Eugene M Kilgore						
Wilma	8	6-7	305	12,425	4.1	514
Beshore Farms						
Jamie	3	7-4	305	17,758	4.0	714
Alda	3	2-1	305	16,390	3.9	636
Harold Brown						
Koren	3	15-1	305	15,553	3.5	542
Kathlen	3	8-9	305	14,279	3.8	546
Moie	3	2-6	305	14,602	4.0	578
Shirley	3	2-3	305	16,066	3.3	530
Gum Tree Farm						
Petal	3	8-5	305	17,746	3.4	597
Worker	3	2-5	305	16,227	3.4	555
Albert Dehoff						
18A	3	6-8	288	14,281	3.7	524
123	3	2-7	297	14,224	4.0	566
Ellis Crowl						
Miss	3	3-9	305	13,835	4.5	629
B 28	3	4-2	300	13,566	5.1	695
J E Lanius & Son						
Millie	2	2-7	305	12,426	4.7	586

Sinking Spring Fm Inc						
Theodor	3	3-8	298	23,172	3.6	824
Jot	3	3-5	290	21,958	3.2	692
Rutter Bros						
Pet	2	6-11	305	12,693	5.0	636
Bell	2	4-4	266	10,485	4.9	513
Mite	2	3-5	305	15,389	4.0	613
Ola	2	2-6	305	10,228	5.5	559
Sara	2	2-2	305	10,183	5.1	518
Red	2	2-4	305	10,525	4.8	505
Petty	2	2-5	305	10,885	4.9	538
Emory & Wm Kilgore						
10	8	5-10	305	13,851	3.8	528
Gum Tree Farms						
120	3	7-5	305	16,324	3.8	616
Curtis V Thompson						
88	3	2-11	305	13,448	4.1	556
91	3	3	305	13,792	4.2	574

(Continued on Page 152)

HOG PRODUCERS!

Get Top Price for

Your Hogs at

New Holland



Sold in sorted lots the auction way. See them weighed and sold and pick up your check.

SALE EVERY MONDAY 8:00 A.M.

NEW HOLLAND SALES STABLES, INC.

Phone 717-354-4341
Daily Market Report Phone 717-354-7288
Abe Diffenbach, Manager

COMPLETE GRAIN HANDLING EQUIPMENT

BROCK

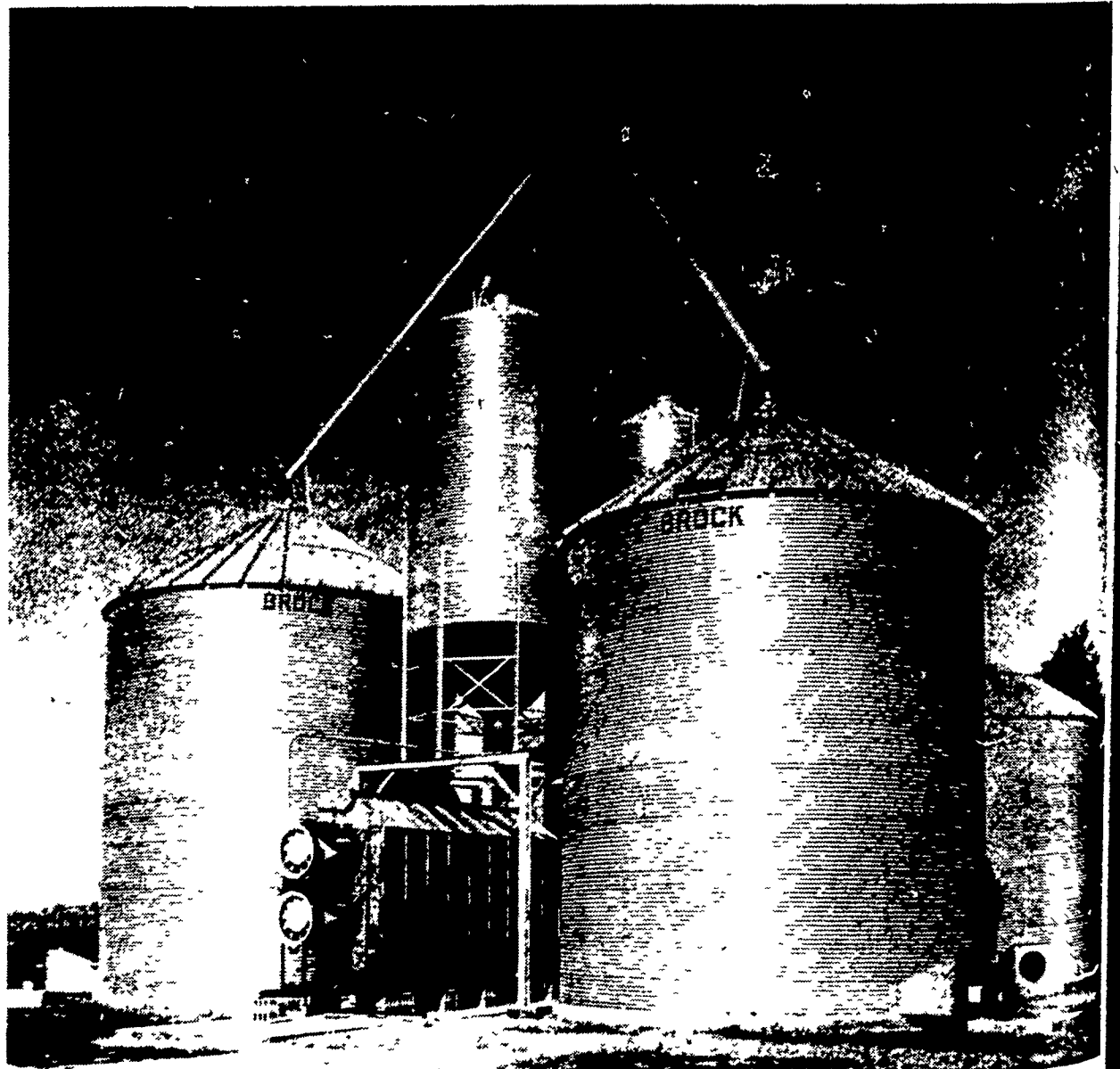
Feed Bins and
Grain Bins

CARDINAL

Bucket Elevators
and Auger Equipment

FARM FAN

Grain Dryer, Aeration
and In-Bin Drying



WE SELL, SERVICE AND INSTALL

E. M. HERR EQUIPMENT, INC.

R.D. 3 Sprecher Road Willow St. Pa. Lancaster Co. 717-664-3321

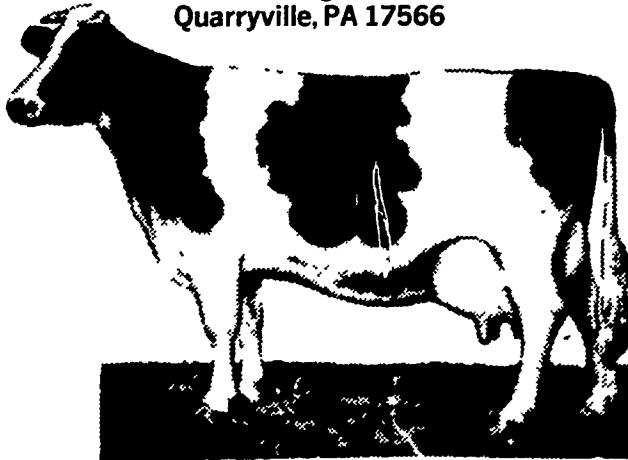
EDGEFIELD FARMS

AMOS RUTT (717) 786-3897

KEN RUTT (717) 786-3591

Rt. 472 & Edgefield Rd.

Quarryville, PA 17566



- Service age sires for sale at all times.
- Sired mostly by top Atlantic sires, Sire Power & ABS.
- Many from cows with over 26,000 lbs. milk.
- All Animals Home Bred and From Accredited Herd.
- Rolling Herd Avg. 100 Cows - 18,200 Milk 683 Fat.
- Quality Disease-Free. Breeding Stock at Reasonable Prices.



JUNE DAIRY MONTH SPECIALS

(End June 30th)

Air-omatic Fans
Weaverline Electric Silage Carts
Bray Magnetic Breeding Calendars
(See Page 122)
Milk Porter Sputnik Parts

PARTS & SERVICE
All Equipment Sold & Serviced
with Full Warranty

Check Our Prices Before You Buy.