

Auction earns \$158,732

HERSHEY, Pa. - The ninth annual WITF Auction, broadcast May 15-21, generated gross receipts of \$158,732, an increase of 5.4 per cent over 1976. The auction, which supports the operation of non-commercial, public broadcasting stations WITF-TV-33 and WITF-FM-89.5, ended at 5:37 a.m. on May 22, after 66 hours of air time, during which a record 1985 items were sold for an average of 75 per cent of retail value.

Danville Auction

Danville, Pa. May 23, 1977
FEEDERSTEERS: - Good to Choice 36.00-41.50; Standard to Good 28.00-35.00.
BULLS: 33.00-35.60
COWS: - High Choice to Prime 28.00-30.00; Good to Standard 25.50-27.75; Utility 22.00-25.00
CALVES: - High to Choice 50.00-56.00; Good to Choice 40.00-50.00.
HOGS: 43.00-45.20.
SOVS: 28.00-34.00
BOARS: 20.00-28.00
SHEEP: 12.00-17.00.
LAMBS: 38.00-64.00

Livestock market and auction news

Des Moines

May 25, 1977
 Midwest carlot meat trade for midwest river area as of 2:15 and close. Compared to Tuesday's close, fresh pork cut trade closing moderate, demand moderate to light. Fresh loins steady to 1.00 higher late, except 17-20 lbs. 2.75 lower; picnics 1.00-1.75 higher; skinned hams 50-1.50 lower; bellies steady to 2.00 lower, except 10-12 lbs. 4.00-4.75 lower; other cuts not established.

Fresh pork cuts: Loins 14/DN lbs. 79.75-80.75; 92.25 export, 14-17 lbs. 76.75-79.75, mostly 78.75 steady 1.00 higher. 17-20 lbs. 76.00 2.75 lower. 20-UP lbs. 71.75-74.25. Picnic 4-8 lbs. 48.75-49.50 1.00-1.75 higher. Boston Butt no sales reported. Spareribs 3/DN lbs. 98.25-100.00. Skinned hams 17-20 lbs. 71.50-72.50 50-1.50 lower. 17-20 lbs. 75.00 export. 20-26 lbs. 72.25 75 lower. 20-26 lbs. 75.00 export. Bellies, sds 10-12 lbs. 50.25-51.00 4.00-4.75 lower, 12-14 lbs. 53.00 steady to 2.00 lower. 14-16 lbs. 52.00-54.00 1.00-2.00 lower. 16-18 lbs. 52.00-53.00. 18-20 lbs. 49.00 2.00 lower. 20-25 lbs. 47.00. Pork Trim 80 lean 63.25 frozen. Pork feet 16.00. Offal & Variety: Livers 60's 13.50. Stomach 30's 17.00, 85's 13.00. Kidney 10.50.

Compared to Tuesday's close, beef trade closed moderate. Demand

moderate to good. Most interest in reported limited supply for immediate shipment. Steer beef steady to 50 higher. Heifer beef steady to 1.00 higher. Primal beef cuts, forequarters 1.00 higher; arm chucks steady to 1.00 higher. Sales on 87 loads steer and heifer beef confirmed. 4 steady canner/cutter cow beef sales.

STEER BEEF: 43 confirmed loads. Prime & choice 3 500-900 lbs. 63.75. Choice 2 600-750 lbs. 64.75 steady. Choice 3 600-900 lbs. 62.50-63.75, steady to 50 higher. Late mostly 63.25-63.75. Choice 2-3 500-900 lbs. 59.50 Holstein type. Choice 4 600-900 lbs. 58.00-58.50. Good 2-3 500-900 lbs. 58.50 Holstein type steady. Good 2-3 500-800 lbs. 58.25.

HEIFER BEEF: 44 confirmed loads. Choice 3 500-700 lbs. 62.25-63.25, steady to 1.00 higher. Mostly 62.75. Good 2-3 500-700 lbs. 57.25 steady.

COW BEEF: 4 confirmed loads. Canner & cutter 51.00-52.00 steady. Bull beef 57.00.

CHOICE 3: Primal beef cuts 13 confirmed loads. Fores 130-210 lbs. 45.50 1.00 higher. Arm chucks 75-120 lbs. 41.00-42.00 steady to 1.00 higher. Ribs 24-40 lbs. 91.00-93.00 couple loads. Loins (trimmed) 35-70 lbs. 137.00 load. Rounds (steer) 70-95 lbs. 67.00 couple loads.

Leesport Auction

Leesport, Pa. May 25, 1977

CATTLE 328. Compared with last Wednesday's market; supply included 132 head feeder cattle. Slaughter steers mostly 50 cents to 75 cents lower. Slaughter cows mostly 50 cents to \$1 lower. Few High Choice & Prime 3-4, 990-1300 lbs. slaughter steers 40.50-40.85, few 4-5, 1125-1220 lbs. 36.75-38.75, Choice 2-4, 1000-1300 lbs. 39.00-40.25, High Good to Low Choice 38.00-39.25, Good 35.00-38.10, Standard 33.00-34.85, few Utility 32.00-33.60. Few Choice slaughter heifers 34.35-37.00, Good 32.75-34.10, few Utility and Standard 30.00-32.50. Utility & High Dressing Cutter slaughter cows 27.00-28.85, few Commercial 26.25-28.00, Cutters 25.25-27.10, Canners 24.00-25.75, few shells down to 21.00. Few Choice slaughter bullocks 34.00-37.75, few Good 33.25-35.85, Standard 31.25-34.75. Few Yield Grade No. 1, 1415-1460 lbs. slaughter bulls 32.00-33.00; individual Yield Grade No. 2, 1060 and 1150 lbs. 33.00 and 35.60. Good and Choice 300-570 lbs. feeder steers 37.75-44.00, Medium 500-750 lbs. 34.00-37.00. Good and Choice 400-650 lbs. feeder heifers 33.75-40.00, few Medium 300-600 lbs. 30.75-34.85. Good and Choice 300-

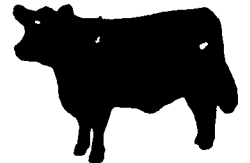
750 lbs. feeder bulls 32.00-39.00.

CALVES 140. Vealers mostly \$5 to \$9 lower. Few Choice vealers 51.00-61.00, Good 43.00-51.00, Standard and Good 110-135 lbs. 38.00-46.00, 90-110 lbs. 30.00-39.00, Standard 60-90 lbs. 21.00-29.00. Farm Calves: Holstein bulls 80-120 lbs. 33.00-55.00; Beef cross bulls and heifers 100-110 lbs. 40.00-45.00.

HOGS 293. Barrows and gilts steady to 25 cents lower. US No. 1-2 200-235 lbs. barrows and gilts 44.75-45.60, lot to 46.10, No. 1-3 200-240 lbs. 44.00-45.25, No. 2-3 195-255 lbs. 42.75-44.10, few 180-200 lbs. 39.75-42.85, few No. 1-3 155-175 lbs. 32.00-41.25. US No. 1-3 350-515 lbs. sows 33.00-33.75, No. 2-3 300-705 lbs. 30.00-33.25. Few Boars 22.00-29.00, few light weights stock boars 28.00-37.50.

FEEDER PIGS 246. US No. 1-3 20-35 lbs. feeder pigs 20.00-31.50 per head, No. 1-3 35-50 lbs. 27.00-36.50 per head, few No. 1-3 125-155 lbs. 35.50-40.50 per hundred-weight.

SHEEP 21. Choice 25-70 lbs. spring slaughter lambs 50.50-59.00, one Good 50 lbs. at 41.00. Few slaughter ewes 15.00-27.00.



Oklahoma Cattle

May 26, 1977

Estimated receipts 9,000
 Same day last week 9,899
 Fairly active, feeder cattle under 600 lb. poorly tested, near steady; feeder cattle over 600 lb. firm to 50 cents higher; majority receipts choice 500-850 lb. feeder steers and 400-700 lb. feeder heifers including large percentage of receipts arriving from graze off wheat pastures. Fairly large attendance buyers.

FEEDER STEERS: Choice 300-500 lb. 44.25-47.50; 500-600 lb. 41.50-43.50. Two part loads 507-512 lb. 44.75-44.90; 600-700 lb. 39.00-41.50, small lot 607 lb. at 42.05; 700-800 lb. 38.50-39.75, small lot 729 lb. at 39.90; 800-950 lb. 38.25-39.75; mixed good and choice 300-500 lb. 43.00-43.75; 600-800 lb. 37.75-39.00; part load 834 lb. at 37.90; good 500-700 lb. 37.50-38.00; 700-810 lb. 35.00-37.00.

FEEDER HEIFERS: Choice 300-500 lb. 34.75-36.50, part load 417 lb. at 37.80; 500-700 lb. 34.50-36.75, small lot 718-811 lb. 600 lb. 34.00-34.75; few good 500-600 lb. 32.25-33.50.

FOR THE WEEK: Compared to late last week, feeder cattle and calves closed 50 cents to 1.00 higher; cows closed 50 cents to 1.00 lower; late sales utility and commercial 2-3 24.00-27.25, cutter 1-3 22.50-24.50; bulls closed steady to 1.00 higher, late sales YG 1-2 1000-1800 lb. 32.00-36.00. Salable receipts near 18,000 head, compared to 22,243 head last week and 12,381 head the comparable week one year ago. Cows and bulls near 7 percent of cattle receipts, feeder near 91 percent of the total.



INCREASE YOUR PRODUCTION!

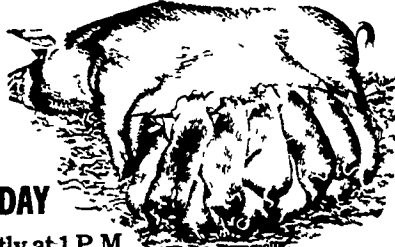
LEASE QUALITY DAIRY COWS
 DHIA HERDS AVAILABLE
 DAIRY FARM LEASING COMPANY
 1700 DUPONT AVENUE SOUTH
 MINNEAPOLIS, MINNESOTA 55403

CALL 612-377-1489 TODAY!

NEW HOLLAND SALES STABLES, INC.

12 Miles East of Lancaster
 on Route 23, New Holland, Penna.

WEEKLY FEEDER PIG SALE EVERY WEDNESDAY



Sale to Start Promptly at 1 P.M.

We Will Receive Your Pigs Anytime

From 7 A.M. Wed. Morning

State Graded Until 12 Noon.

All pigs inspected by State Approved Veterinarian. State tags available at our office for you to tag pigs at home to save 25 cents tagging charge. Tags delivered if you call 717-354-4341 our office in advance.

Calf Sale To Be Held In New Sales Pavilion Every Thursday At 6:30 P.M.

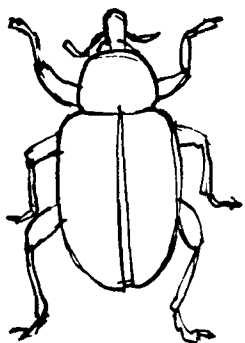
NORMAN KOLB ABE DIFFENBACH

717-397-5538

717-393-4464

Alfalfa weevil control-

SUPRACIDE 2E Insecticide for the control of ALFALFA WEEVIL, APHIDS AND OTHER INSECTS.



In 7 years of testing, SUPRACIDE has demonstrated a higher kill rate and longer control than most of the other insecticides now being used on Alfalfa.

It has been used for the control of Leaf Hoppers and Lygus Bugs also.

MELVIN R. WEAVER

RD1 Box 529

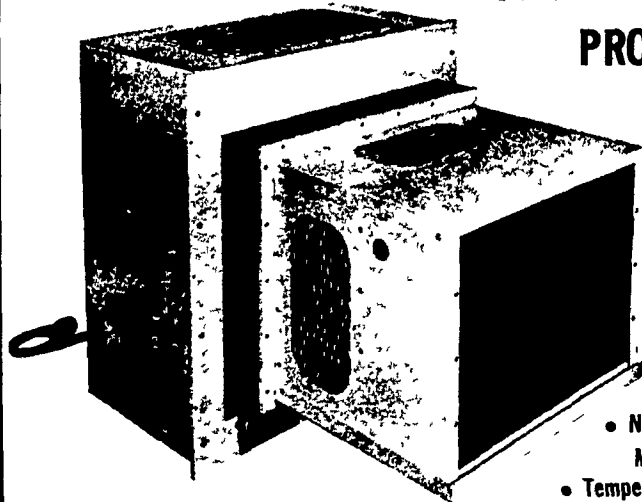
Manheim, PA

PH: 717-569-6576

BURCH EGG COOLERS

PROTECT QUALITY

PROTECT PROFITS



- Maintains Proper Egg Room Temperatures
- Maintains High Humidity to Safeguard Quality
- Cools Eggs Quickly - Holds Them at Proper Temperature
- Rugged, Compact Unit. Easy to Install and Maintain
- Provides Increased Air Movement even in extreme Temperatures

- No Defrosting Required! Designed for Minimum Maintenance
- Temperature Range, 50 Degrees F and up
- 3,000 to 50,000 BTU

BURCH COOLER DOORS

- Burch Egg Room Doors
- Burch Loading Chute Doors
- Right or Left Hand Doors
- Sizes Available on Request



FOR THE EGG PROCESSOR — HOUSING by CYCLE SYSTEMS, EGOMATIC & KUHL EQUIPMENT for the PROCESSING ROOM, also OTHER SUPPLIES.

Modern Poultry Supplies, Inc.

Call Jim or Mike Enck

Office and Warehouse (Pickup)
 752 East Ross St.
 Lancaster, Pa. 17602

717-299-0828 or 717-397-5850

