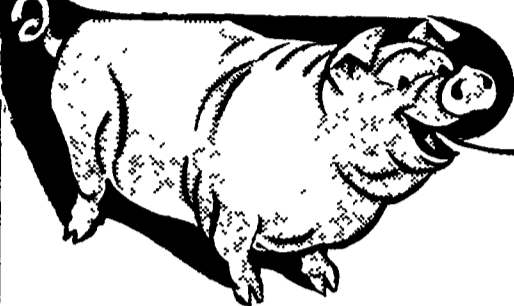




# Livestock market and auction news

## ANNOUNCING LANCASTER STOCKYARDS 1st FAT HOG SHOW AND SALE



**WEDNESDAY, JUNE 15TH**

Judging 10 A.M. Show Sale 1 P.M.

Chairmen: Jack Forsyth, Lloyd Hoover,

Pat McCoy

Judged and Sold in Lots of 10

3 CLASSES

Light — 195 to 210 Medium — 211 to 230  
Heavy — 231 to 250

- All Hog Feeders Eligible
- One Lot of 10 per Consignor
- Entries must be registered with a Commission Firm and received prior to 10 A.M.
- Ribbons awarded to sellers and buyers
- 1st and 2nd for each class
- Trophies to Grand Champion and Reserve Champion

**LANCASTER STOCKYARDS, INC.**  
(717) 394-2611

## Omaha Cattle

May 19, 1977

Weekly 51 - Cattle - compared with the previous weeks close

SLAUGHTER STEERS 75 - 1.00 lower than previous midweek and heifers were 50-75 cents lower. Cows 1.00-1.50 lower and bulls mostly 1.00 lower.

Four day receipts 18,500 as compared 18,400 previous week and 15,100 a year ago. Fed cattle prices were bent downward under the bearish influence of lowered carcass realizations. Trading was often slow and deliberate as buying interests sought to establish an acceptable ratio between live prices and the declining carcass realizations; Yield grade

was usually a greater price determining factor than weight. Local supplies little changed from the previous week and were well distributed over the trading period. The overall finish continued attractive with a liberal percentage good and a moderate volume Choice and Prime including some loadlots predominantly 4 steers. Slaughter Steers made up approximately 49 and Heifers 29. Cows comprised 9 and feeders for auction 14.

STEERS: Several loads choice 3 1107-1150 lbs. 42.75 fore part of week. At mid-week, four loads Choice 3 1125-1200 lbs. 42.10-42.25. Few Loads Choice and

Prime with large percentage 4 1225-1300 lbs. 40.00-40.75. Choice 2-4 975-1300 lbs. mainly 40.75-41.75, some loadlots predominantly 3 or carrying end prime 41.75-42.00. Mixed Good and Choice 2-3 975-1250 lbs. 40.25-41.00, load 1354 lb. Holsteins 38.00. Good 2-3 37.00-40.00, Couple loads Holsteins 37.00-37.25. Standard and Good 203 35.00-36.00.

Average of LS-214, detailed quotations for Choice 900-1710 lb. Steers this week 41.78; Choice 1100-1300 lbs. 41.65. Average weight steers first three days 1149 lbs. as compared 1145 lbs. previous week. Average

weight Heifers first three days 1002 lbs. as compared 991 lbs. previous week.

HEIFERS: Five loads Choice and Prime 3-4 1019-1087 lb. 41.25 early. At midweek, two loads Choice 3 974-1009 lbs. 41.00. Choice 2-4 875-1050 Lbs. closed 39.25-40.75. Mixed Good and Choice 2-3 800-1000 lbs. 38.00-39.25. Good 2-3 34.00-37.00. Standard and Good 2-3 32.00-33.50.

COWS: Utility and Commercial 2-4 25.00-26.50. Canner and Cutter 21.00-25.00.

BULLS: At close, 1-2 1400-1800 lbs. 32.00-35.50, Few 1 36.00-37.00.

## Oklahoma Cattle

Thursday, May 19

Estimated Receipts 10,500. Same Day Last Week 8,902.

Moderately active, feeder cattle and calves generally steady; majority receipts Choice 500-850 lb. feeder steers and 450-700 lb. feeder heifers; moderate attendance buyers.

FEEDER STEERS: Choice few 400-500 lb. 43.50-46.50; 500-600 lb. 38.25-41.25, package 590 lb. 44.00; 600-700 lb. 38.00-39.75, 700-800 lb. 38.00-39.00, 800-885 lb. 38.00-38.75; mixed Good and Choice, few 400-500 lb. 42.50-43.00, 500-865 lb. 37.50-38.00; Good 300-500 lb. 37.00-37.75; 500-700 lb. 35.75-37.25, 700-850

lb. 35.75-37.00.

FEEDER HEIFERS: Choice 400-600 lb. 34.00-35.75, 600-760 lb. 34.50-35.75, two part loads 649-655 lb. 35.90-36.35; mixed Good and Choice 400-715 lb. 33.00-34.00; Good 400-665 lb. 30.00-33.00.

For the week: Compared to late last week, feeder cattle and calves closed 50 cents to 1.00 lower, instances of 2.00 lower; cows closed 1.00-1.50 lower; bulls closed 1.00-2.00 lower; salable receipts 22,300 head compared to 17,460 last week and 16,456 the comparable week a year ago. Cows and bulls near 8 per cent of cattle receipts, feeders near 89 per cent of the total.

## L & M FUR & WOOLEN ENTERPRISE



Quality Electrified Moutons & Furs

Tannery Direct Dist. - Wholesale & Retail

Check our Quality, Price & Services!

- Woolen Hosp. Pads - Natural & All Colors
- Pa. Largest Selection of Woolen Products
- Sheepskin Coats at Reasonable Prices
- See Us At Meadowbrook Market in Leola

117 W. Summit St., Mohnton, Pa.  
215-777-2465  
Hours: Mon.-Fri. 9-8:30; Sat. 9-5

## INCREASED PROFITS FROM EVERY ACRE OF CORN?

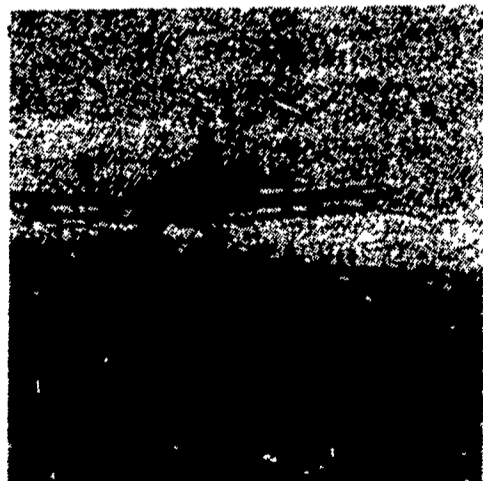
# Spark

## DID IT LAST YEAR!

### SPARK GROWTH STIMULANT ON CORN

### LANCASTER COUNTY AVERAGE INCREASES:

↓  
**11 BUSHELS  
OF CORN  
PER ACRE!**



↓  
**\$18.00  
PER ACRE  
ADDED  
PROFIT!**

APPLIED PROFESSIONALLY BY AIR

LANCASTER AND CHESTER COUNTIES EXCLUSIVE DISTRIBUTOR:



## ORGANIC PLANT FOOD

ASSOCIATED  
DEALER

Farmer's Fertilizer  
Elizabethtown

2313 NORMAN RD. LANCASTER, PA.  
PH. 717-397-5152

REMEMBER - TIME OF APPLICATION IS CRITICAL!

• Average of Eleven Lancaster County Checks



## St. Louis Cattle

May 19, 1977

Receipts this week 6900: week ago 7700: year ago 6400.

Compared to last week's close, slaughter steers traded uneven again, closing generally steady after slight price strength Tuesday was offset by a weaker trend at mid-week. Slaughter heifers also somewhat uneven but mostly steady. Cows 1.00-1.50

lower. Bulls fully steady. Supply mainly Good to Prime 2-4 950-1250 lb. steers, about 25 per cent heifers and fully 10 per cent cows.

SLAUGHTER STEERS: Several loads mixed Choice and Prime 2-4, 1050-1250 lbs. 41.50, part load 42.00 Tuesday, load Choice and

[Continued on Page 12]

## CATTLE FEEDERS

- You've Fattened Your Cattle,  
Now Fatten Your Profits.

WIN A

**\$1,000 SAVINGS BOND**  
If You Are the Consignor Of The  
**MILLIONth HEAD**

Whether a Steer, Bull, Heifer or Cow, to be Sold at LANCASTER STOCKYARDS at the Monday or Wednesday Cattle Auction, You Will be the Winner

- It's Due to Occur Sometime in May or June.

• Free • No Gimmicks • No Entry Blanks • Just Ship Your Cattle to LANCASTER STOCKYARDS And Sell Them Through Your Favorite Commission Firm • That's All There Is to It •

Participating Firms

Walter M. Dunlap & Sons G.G. Lorah Louis Lyons & Son  
S.L. Heilbron & Sons T.G. Kreider McCoy Cattle Co.  
J.M. Hooper Inc. Johnson Cattle Co. William W. McCoy

When You Think About Going To Market,  
THINK:

**LANCASTER STOCKYARDS**

(The East Coast's Livestock Trend-Setter)  
Phone (717) 394-2611