

Livestock market and auction news

Lancaster Market

Monday, May 16, 1977
Cattle Calves Hogs Sheep
Today 1551 162 846 147
Last Monday 1650 93 718 110
Last Year 1370 108 661 169
Monday's auction 1399 166 884 164
Last Monday's Auction 1391 97 741 113

CATTLE: Compared to last Wednesday slaughter steers steady, instances 50 lower; slaughter heifers fully steady; cows fully steady; bullocks 50-1.00 higher; bulls 50-1.00 higher, instances 2.00 higher.

SLAUGHTER STEERS: High Choice and Prime 3-4 1100-1375 lb. 41.50-42.60; Choice mainly 2 1050-1325 lb. 42.00-42.60; Choice 2-4 975-1325 lb. 40.50-42.10, few 40.00-40.50; high Good and low Choice 2-3 39.00-40.50; Good 2-3 35.25-39.25; Standard 1-2 33.00-35.60.

SLAUGHTER HEIFERS: Choice 2-4 900-1025, lb. 37.00-39.25, few 40.00-40.25; Good 2-3 34.50-37.50.

COWS: Utility 1-3 30.50-32.10, few head 33.50-34.25; few Commercial 3-4 28.50-30.50; Cutter 27.00-30.50.

BULLOCKS: Choice 975-1250 lb. 37.50-39.50, couple 39.50-40.25; Good 34.50-37.00.
BULLS: Yield grade 1 1100-1800 lb. 35.50-38.25, few 40.00-41.75; yield grade 2 1000-1350 lb. 32.00-35.50.

VEAL CALVES: Vealers fully steady.
VEALERS: Prime 74.00-80.00; Choice 62.00-72.00; high Good and low Choice 55.00-65.00; Good 48.00-55.00; Standard and Good 90-110 lb. 40.00-48.00, few standard 35.00-40.00.

SHEEP: Spring lambs fully steady; slaughter ewes steady.
SPRING LAMBS: Choice 75-90 lb. 62.00-63.00, few 35-45 lb. 75.00-80.00.

SLAUGHTER EWES: Utility and Good 17.00-20.00

Vintage Market

Tuesday, May 17, 1977
Cattle Calves Sheep
Today 1191 405 64
Last Tuesday 1022 390 33
Last Year 911 375 31

CATTLE: Compared to last Tuesday slaughter steers steady to 50 lower, least decline on average Choice; cows 1.00-1.50 lower; bullocks steady; bulls steady to firm.

SLAUGHTER STEERS: High Choice and Prime 3-4 1100-1375 lb. 41.60-42.50, few to 42.85; Choice mainly 2 1050-1325 lb. 42.00-42.85, around 12 head 43.10-44.25; Choice 2-4 975-1350 lb. 40.50-42.00, part load 1500-1600 lb. Holsteins 34.25-34.50; high Good and low Choice 2-3 38.50-40.75.

SLAUGHTER HEIFERS: Choice 2-3 975-1075 lb. 38.00-40.10, load Choice 900-1065 lb. 40.10-41.85; Good 2-3 775-880 lb. 35.25-37.00.

COWS: Utility 1-3 29.00-31.00, few 31.00-31.75, couple 32.50-33.10; Commercial 3-4 25.00-28.50, few 28.50-30.00; Cutter 1-2 27.50-29.50, few 29.50-30.75; Canner and low Cutter 24.50-26.50.

BULLOCKS: Few Good and Choice 1000-1275 lb. 35.00-37.50, couple 37.50-39.00.

BULLS: Yield grade 1 1100-1750 lb. 35.50-37.75, few 37.75-38.35 yield grade 2 1000-1350 lb. 32.50-35.00.

VEAL CALVES: Vealers 1.00-3.00 lower, although Choice and Prime not tested. Supply included 258 in graded sale of which 31 per cent sold to return to farm.
VEALERS: High Good and low Choice 54.00-61.00, couple Choice 64.00-66.00; Good 47.00-56.00; Standard and Good 80-115 lb. 43.00-52.00; Standard 65-95 lb. 30.00-41.00.

RETURNED TO FARM: 65 head Standard and Good 100-115 lb. Holstein bulls

Lancaster Auction

Wednesday, May 18, 1977
Cattle Calves Hogs Sheep
Today 1447 103 570 30
Last Wednesday 1612 77 748 27
Last Year 1048 81 637 67
Wednesday's auction 1649 133 664 30
Last Wednesday's Auction 1326 77 759 27

CATTLE: The cattle receipts were the largest in the history of Lancaster Livestock Auction. Slaughter steers accounted for 88 per cent of the supply. Slaughter steers steady to 50 lower, instances 75 lower, although Standard and Good Holsteins firm to 50 higher; cows 1.00-2.00 lower; bullocks scarce, few sales steady; bulls steady, although few yield grade 1 1.00 lower.

SLAUGHTER STEERS: High Choice and Prime 2-4 1050-1325 lb. 41.10-42.25, few head 42.35-42.75; Choice 2-4 1000-1400 lb. 40.25-41.85, few 39.75-40.25; Choice mainly 4 1275-1425 lb. 38.50-40.50; high Good and low Choice 2-3 38.50-40.25; Good 2-3 36.00-39.00; Good and Choice Holsteins 1200-1450 lb. 35.50-37.50; few Standard 1-2 33.00-34.50.

SLAUGHTER HEIFERS: Good 2-3 750-1025 lb. 33.00-37.60, few Choice 38.50-39.75.

COWS: Utility 1-3 28.75-30.00, few 30.25-30.75; Cutter 1-2 27.50-29.00; Canner and low Cutter 25.50-28.00.

BULLOCKS: Good 100-1250 lb. 34.25-36.75, couple Choice 37.35-37.85.

BULLS: Yield grade 1 1100-1800 lb. 34.75-37.50, couple 39.00-40.00; yield grade 2 1000-1300 lb. 32.50-35.00.

VEAL CALVES: Vealer 1.00-5.00 lower, although Standard and Good 90-110 lb. steady.

VEALERS: Choice 57.00-65.00, couple Prime 65.00-70.00; high Good and low Choice 50.00-60.00; Good 45.00-52.00; Standard and Good 90-110 lb. 40.00-48.00, few Standard 35.00-40.00.

SHEEP: Few Good 55-75 lb. spring lambs 53.00-57.00.

New Holland

Thursday May 19, 1977
Cattle Calves Sheep
Today 800 384 4
Last Thursday 1243 510 16
Last Year 1152 362 13

CATTLE: Compared to last Thursday slaughter steers 50-1.00 lower; cows 1.00 lower, instances 2.00 lower on Utility; bullocks scarce; bulls steady to 50 lower.

SLAUGHTER STEERS: High Choice and Prime 3-4 1100-1300 lb. 41.25-42.00; Choice mainly 2 1050-1250 lb. 41.50-42.00, few 42.00-42.60; Choice 2-4 975-1325 lb. 40.00-41.75; high Good and low Choice 2-3 38.00-40.10; Good 2-3 34.00-39.00; Standard 1-2 31.00-35.50.

COWS: Utility 1-3 28.75-30.50, few 30.50-31.75; Commercial 2-4 25.75-29.00; Cutter 1-2 26.50-29.50; Canner and low Cutter 24.50-26.50.

BULLOCKS: Choice 1000-1300 lb. 37.50-39.00, few 39.00-39.50; Good 1000-1250 lb. 33.00-36.50.

BULLS: Yield grade 1 1100-1700 lb. 35.00-37.60, couple 38.00-39.50; yield grade 2 1000-1350 lb. 33.50-35.50.

VEAL CALVES: Vealers 1.00-4.00 lower, although Standard and Good 70-110 lb. fully steady.

VEALERS: Choice 62.00-69.00, couple Prime 74.00-79.00; high Good and low Choice 53.00-63.00; Good 47.00-53.00; Standard to low Choice 90-115 lb. 42.00-46.00; Standard and Good 70-95 lb. 35.00-42.00; Standard 60-85 lb. 30.00-35.00.

RETURNED TO FARM: grade 2 1000-1300 lb. 32.50-35.00.

VEAL CALVES: Vealer 1.00-5.00 lower, although Standard and Good 90-110 lb. steady.

VEALERS: Choice 57.00-65.00, couple Prime 65.00-70.00; high Good and low Choice 50.00-60.00; Good 45.00-52.00; Standard and Good 90-110 lb. 40.00-48.00, few Standard 35.00-40.00.

SHEEP: Few Good 55-75 lb. spring lambs 53.00-57.00.

Lancaster Weekly

Friday May 20, 1977
Cattle Calves
This Week 6000 1075
Last Week 6466 1071
Last Year 4761 929

CATTLE: Slaughter steers 50 lower, some sales as much as 1.00 off although Standard and Good Holsteins fully steady, instances 50 higher; slaughter heifers fully steady; cows 1.00-2.00 lower; bullocks steady; bulls steady, although few yield grade 1 1.00 higher early part of week. Supply included 66 per cent slaughter steers, 10 per cent cows, 5 per cent bulls, 4 per cent heifers with the balance feeder steers.

SLAUGHTER STEERS: High Choice and Prime 3-4 1100-1375 lb. 41.25-42.25, few head 42.25-42.85; Choice mainly 2 1050-1325 lb. 41.50-42.50, few head 42.50-43.25; Choice 2-4 975-1350 lb. 40.00-42.00, few 39.25-40.00; Choice mainly 4 1275-1425 lb. 38.50-40.50; high Good and low Choice 2-3 38.00-40.50; Good and Choice 1200-1600 lb.

Few Standard and Good Holstein bulls and heifers 48.00-55.00.

SHEEP: No market test.

B & R CATTLE CO.

Washington Boro, PA 17582
Office Phone (717) 872-5491

Specializing in Stockers & Feeders

John Bowman
Ph: (717) 653-5728

Ron Ranck
Ph: (717) 656-9849

Holsteins 34.25-37.50; Good 2-3 34.00-39.00; few Standard 1-2 31.00-35.00.

SLAUGHTER HEIFERS: Choice 2-3 900-1050 lb. 37.00-40.10, lead 900-1065 lb. 40.10-41.85; Good 2-3 750-1025 lb. 33.00-37.50.

COWS: Utility 1-3 28.75-31.00, few 31.00-32.00, with some sales on Monday 33.50-34.25; Commercial 3-4 25.00-29.00; Cutter 1-2 26.50-29.50; Canner and low Cutter 24.50-26.50.

BULLOCKS: Choice 975-1250 lb. 37.50-39.50, few head 39.50-40.25; Good 1000-1250 lb. 33.00-37.00.

BULLS: Yield grade 1 1100-1800 lb. 35.00-38.00, few 38.50-40.00, couple 40.50-41.75; yield grade 2 1000-1350 lb. 32.00-35.50.

VEAL CALVES: Vealers 1.00-4.00 lower, although Standard and Good 70-110 lb. mostly steady.

VEALERS: Prime 74.00-80.00; Choice 62.00-70.00; high good and low Choice 50.00-60.00; Good 45.00-55.00; Standard and Good 90-110 lb. 40.00-48.00; Standard 70-100 lb. 30.00-40.00.

RETURNED TO FARM: Standard and Good 90-110 lb. Holstein bulls and heifers 48.00-55.50.

LEBANON VALLEY LIVESTOCK MARKET, INC.

1 mile East of Fredericksburg along Route 22

PHONE JONESTOWN 865-2881

Sale every Tuesday at 1:30 P.M. starting with feeder cattle and pigs.

HAY, STRAW AND EAR CORN SALE

Every Wednesday at 12 Noon
At David Good's Farm Equipment Sale
North Maple Ave., Leola, PA

HARVEY Z. MARTIN

Home Phone 215-445-5303
We Buy On Orders
Bus. Phone Wed. Only 717-656-7270

We also buy hay and straw privately.

NEW HOLLAND The Action Auction

AUCTIONS make the difference in marketing livestock!

NEW HOLLAND makes the difference in auctions!

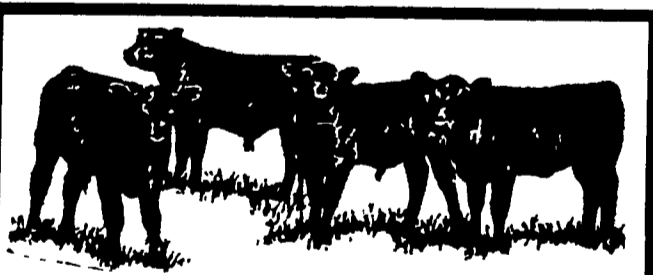
MONDAY'S ACTION:
8:00 A.M. - Fat Hogs
10:00 A.M. - Horse Sale
11:00 A.M. - Hay, Straw & Ear Corn
1:30 P.M. - Fat Steers, Bulls, Cows & Veal

WEDNESDAY'S ACTION:
12:00 Noon - Hay, Straw & Ear Corn
12:30 P.M. - Dairy Sale
1:00 P.M. - Feeder Pig Sale

THURSDAY'S ACTION:
11:00 A.M. - Beef Sale
Order of Sale - Bulls, Fat Steers, Cows, Veal.
6:30 P.M. - Calf Sale

NEW HOLLAND SALES STABLES INC.

New Holland, PA
Abram W. Diefenbach, Manager Phone: 717-354-4341



NOTICE

Cattle division closed Mon. May 30th
Memorial Day

Hog division open for private treaty

LANCASTER STOCKYARDS WEEKLY SALES

Slaughter Sales - Mon. & Wed. 11:00 A.M.
Vealers, Lambs, Hogs - Mon. & Wed. 11:00 A.M.
Stocker & Feeder Sale - Friday 12 Noon
Hogs Sold Sat. - Private Treaty 7-12 Noon

NEXT FEEDER PIG SALE MAY 24 - 1 P.M.

PRIVATE TREATY DAILY

LANCASTER STOCKYARDS, INC.
(717) 394-2611



VINTAGE SALES STABLES, INC.

BULLS, STEERS, BUTCHER COWS, LAMBS AND VEAL CALVES SOLD ON COMMISSION

SALE EVERY TUESDAY 11 A.M.

HOG SALES WEEKLY - WED. & SAT. 9 A.M.

STATE GRADED FEEDER PIG SALE - 1ST & 3RD THURSDAY, 1:00 P.M.

(\$1.00 a head Commission)

EVERY THURSDAY - 12:00 P.M.

HAY & STRAW SALE

Get calves in early for grading & weighing. No weight loss.

FOR MARKETING INFORMATION
PHONE AREA CODE 717-768-8204

Home Phone 215-458-5060
L. Robert Frame, Manager

Box 100

Paradise, PA

10 miles East of Lancaster on Rt 30