

MARTIN'S SIXTH ANNUAL CARRIAGE & ANTIQUE AUCTION MAY 19, 20, & 21, 1977

LOCATED AT PAUL Z. MARTIN'S SALES STABLES, INTERCOURSE, PENNA., 12 MILES EAST OF LANCASTER, PENNA. ON ROUTE 340 AND 4 MILES SOUTH OF NEW HOLLAND, LANCASTER COUNTY, PENNA.

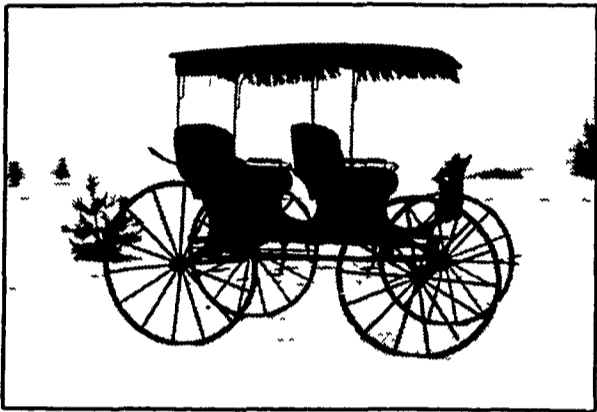
(TENTATIVE SALE ORDER)

THURSDAY, MAY 19, 10:00 A.M. & 7:00 P.M.

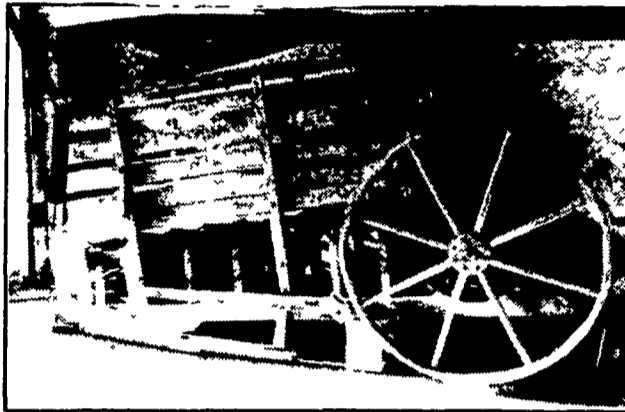
(PLEASE POST)

Large assortment of furniture, glassware, toy sale and primitive tools, large wooden ice cream box, all refinished; oak and walnut furniture; glass china cabinet; oak round and square extension tables; old dining room suites; assortment of rockers including goose back, wicker and cane seated; three matching Empire walnut side chairs; oak wash stands; brass bed; wood boxes; camel back and assortment of trunks;

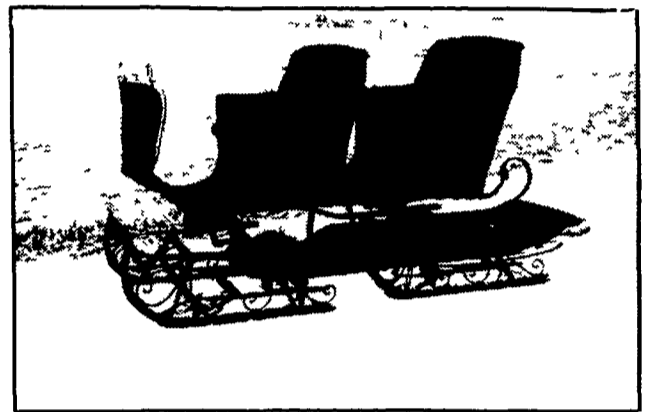
tables; fainting couch; oak side boards; dressers; picture frames; 2 small Fratrus - 1½ by 3 (child's drawing); 3-ft. custom manikin doll and antique dresses and ladies shoes; toys consigned by Publican; friction locomotive; metal police car; cast iron 3-horse and ladder wagon; small 2-horse ladder wagon; tin fire engine. Also fire bucket glass lined; mechanical barman (battery operated); toy trains and many cast iron and wooden toys. Primitive tools, including wooden planes, chisels, etc.



TWO—SEAT SURREY



HORSE TREAD POWER



TWO—SEAT BOB SLEIGH

FRIDAY, MAY 20, 10:00 A.M. SHARP

Broom maker's machine, carriage and buggy parts, large assortment of harness and horse related items. Poles, shafts, wheels and axles, wagon and carriage boxes, dashes, springs.

LOTS OF FARM EQUIPMENT AND LARGER PRIMITIVE TYPE MERCHANDISE FROM THE FIELD, WE WILL CONTINUE TO SELL UNDER TENT MANY HORSE RELATED ITEMS INCLUDING BOOKS, A COLLECTION OF ASSORTED BUGGY & LAP ROBES, OX YOKES, LAMPS, HARNESS, SADDLES, SIDE SADDLES, BRIDLES & MISCELLANEOUS ITEMS.

FRIDAY, MAY 20, 1:00 P.M.

Carriages and sleighs from partial liquidation of Mrs. Jean DuPont McConnell including wagonette break, Stanhope Phaeton (Brewster & Co.), slat side shooting wagon, Brougham tub cart, pony freight wagon, large shooting break, ladies Phaeton, Stanhope gig with lamps (Brewster), pony back to back trap, wicker seat pony runabout and several sleighs. Immediately following this nice collection, we will continue with catalogued carriages and sleighs.

PLEASE NOTE: On Friday afternoon there will be a large quantity of good vehicles being sold along with some restored carriages and sleighs (approximately 100 vehicles).

FRIDAY, MAY 20, 7:00 P.M.

The complete liquidation of "The Hex Barn" carriage collection and antique items to settle the Estate of W.R. Devlin. Partial listing Conestoga Wagon jacks (4), pot belly and Ben Franklin stoves, drugstore scales, post office front with boxes, side saddles, 4 fiberglass horses, 2 & 1 horse tread powers, dog tread powers, saddlers bench, and carriages consisting of early C-Spring chaise on wooden axles, milk wagon, Brougham, natural wood Essex trap, Omnibus, Gruber wagon, hay wagon with cab, 1 large hearse, 1 hearse on sleigh, bobs, surreys, side-bar and top buggies, sleighs, orchard wagon, large market wagon, very nice market sleigh, 5th wheel and farm type wagons. There are approximately 60 carriages and sleighs and 300 lots of small items to be sold in the collection on Friday Evening.

FUTURE CARRIAGE SALE DATES

June 18 - Westward Frontier Museum of America, Minerva, Ohio
July 15 & 16 - West Springfield, Massachusetts
August 25, 26 & 27 - Intercourse, Penna.



Sale conducted by:

MARTIN AUCTIONEERS, INC.



Box 71, Blue Ball, Pa. 17506
"Complete Auction Service"
PAUL Z. LARRY L. PAUL Z., JR.
717-354-6671 215-445-4413 717-768-8994
Office. 717-354-7006 (Electronic Secretary)



Member of National and Pennsylvania Auctioneers Association

SATURDAY, MAY 21, 9:00 A.M. PROMPTLY

Another large selection of harness, books, buggy and lap robes, lamps, side saddles, ox yokes, miniature and baby carriages and hundreds of horse related items.

SATURDAY, MAY 21, 2:00 P.M.

Carriages and sleighs consisting of Broughams, Victorias, Phaetons, 2 & 3 seated surreys and sleighs, runabouts (side-bars and top buggies), pony wagonette (wicker), pony surrey, pony traps, restored ABBOT & DOWNING MUD WAGON (STAGE COACH), side curtain and side panel rockaways, ROAD COACH BY PETERS & SON, 2 hearses, plantation surrey & runabout, Doctor's sleigh, horse size traps, marine artillery wagon, ladies basket Phaeton, freight wagons, buckboards, pony circus calliope, tub carts, village carts, pony hitch wagon, drop front Phaeton, BRONSON WAGON, high wheel racing sulkys, horse and pony governess carts, cabriolet, horse drawn fire pumper, 2 & 4 wheel horse carts, Stanhope and 2-wheel gigs and carts of many descriptions.

PLEASE NOTE

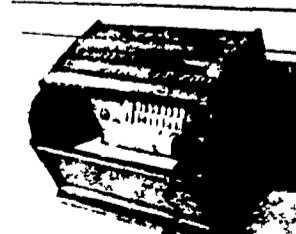
This is only a partial listing for 3 Big Days. Many more carriages and sleighs not listed. A large quantity of vehicles are restored for both carriage and sleigh days. On our August '76 sale we sold over 4000 items in three days and we plan to sell more this year. So make reservations early and send for catalogues in plenty of time. Plan to come early and stay late.

Catalogues listing all horse drawn vehicles available for \$4.00 to cover postage and handling.

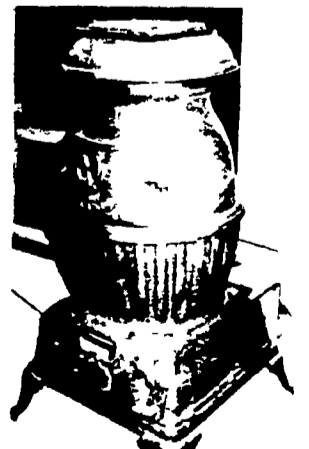
TERMS: CASH, CERTIFIED CHECK, MONEY ORDER, OR A CURRENT LETTER OF CREDIT OR REFERENCE FROM YOUR BANK MUST ACCOMPANY ALL BUSINESS AND PERSONAL CHECKS. Purchases will not be released until settlement has been made with MARTIN AUCTIONEERS, INC. at the end of each sale day. All articles, items or vehicles shall be removed from sale area by the purchaser at his expense. For your convenience, storage will be available by contacting Martin Auctioneers, Inc.

WE WELCOME INQUIRIES FROM ANYONE
WITH QUALITY ANTIQUES TO DISPOSE OF.

SALE SITE PHONE:
717-768-8108
WEEK OF SALE ONLY



18th Century Concert Roller Organ. Beautiful Walnut Console model New Bellows Perfect



One of several Stoves from the Hex Barn.

Sale located One Hour from the Harrisburg Airport, 1½ Hours from Philadelphia International Airport and approximately 20 miles from the Penna Turnpike