

**TALKING ABOUT FARMS!!**

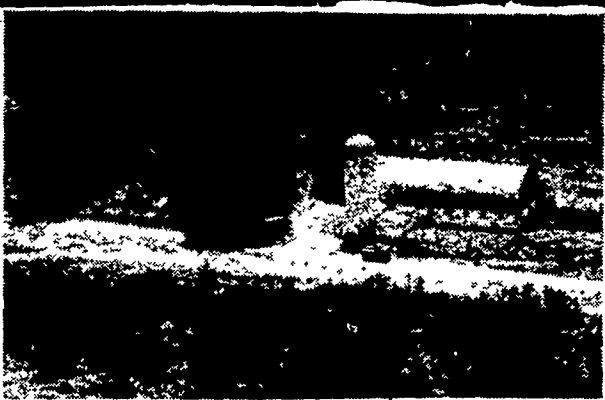
90 Acres, nearly all tillable, limestone, plenty of frontage, beautiful buildings, modern brick home, 40 stalls, 600 gallon tank, Be sure to call on this one located in Cumberland County. \$320,000.

MENNONITE NEIGHBORS, fertile 39 tillable acres, 20 acres woods (pines) w-frontage in a little peaceful valley, 13 acres meadow which offers a good spot for a pond, farm buildings. Oh yes, a landing strip included, Snyder Co. \$82,900.

120 ACRE going dairy operation w-pipeline. Plenty of frontage near rtes 22 & 181. Offers many possibilities. Owner financing, Dauphin Co. \$200,000.

COLUMBIA CO. 65 acres poultry farm. Presently 50,000 broilers, 14,000 pullets. Fine buildings. \$125,000.

**CALL TODAY!**  
Ask for one of the Farm Men at:



**FOR SALE**

**BRADFORD COUNTY PENNSYLVANIA**

Two Hundred Nine (209) acre farm. 100 acres tillable river flat land, farm house and excellent dairy barn.

House and barn on west side of Route 220, five miles north of Towanda, Bradford County, Pennsylvania.

Must sell to settle estate.  
Call or write:

**ELLEN BUSTIN, EXECUTRIX**

217 N. Main Street  
Towanda, Pennsylvania 18848  
(717)265-6534

**CENTRAL PA. FARMS.**

Centre County - 217 General Farm, 5 miles from State College, limestone ground, good buildings. \$260,000. convenient terms available

Centre County - Ideal as a farmette or weekend retreat and located approximately 12 miles from State College This property contains 103.5 acres with 21 acres tillable and 82.5 acres woodland. It features an almost new semi-A-frame two story home in excellent condition, a small barn 4 springs & a small year-round stream. With good access, seclusion and privacy and low taxes it is fairly priced at \$75,000

Huntingdon County - Ideal for general or livestock farming or for investment. This farm contains 180 acres with 100 tillable, 60 acres pasture & 20 acres woodland. Featured is a sound brick home built in 1842, excellent, never-failing spring water, a large 2 story frame barn with horse stalls & 2 horse riding areas. Located 2 miles off Rt. 222 near Huntingdon & 7 miles from the Raystown dam. Priced at \$135,000 with owner financing at 7 1/4 percent interest

Huntingdon County - Nice 277 acre Dairy farm with 240 acres tillable, 33 acres pasture, & 4 acres woodland. Featured is a 2 story frame house, with aluminum siding, 2 story frame barn with 50 stanchions, milk house with bulk tank, & water heater, large concrete block garage & shop with cement floor, all in good condition & several miscellaneous buildings. The majority of this farm lays quite nicely. Located 20 miles from State College. Priced at \$275,000 with owner financing available

Huntingdon County - Good General, Beef, or Hog Farm, 160 Acres, 100 Acre Tillable, 30 Acres Pasture & 30 Woodland. Large double house, barn with liquid manure pit & cemented floor (fixed for finishing 200 hogs), 2 trench silos (cemented), excellent spring water, pond & productive soil. Only 40 minutes from Raystown Dam, the farm has good frontage & very low taxes. Equipment available & it adjoins state game lands. Priced at \$128,000. Owner financing with only 20 percent down

Blair County - 200 acre farm and nursery. Features 9 room stone Colonial house, 50' x 80' barn and new 26' x 91' combination greenhouse and shop. Approximately 50,000 pieces of nursery stock plus large amount of equipment. 94 acres tillable land, 76 acres pasture, 30 acres woodland. Approximately 1/2 mile road frontage plus 1/4 mile river frontage having a variable interesting topography with several limestone caves. Great potential in scenic, historic Central Penna with mineral rights intact. Priced at \$330,000 complete

**PLANNING TO SELL YOUR FARM?**

Our Farm & Land Department would be happy to talk to you without obligation, to explain our detailed farm sales program. We have had excellent farm sales this spring, and have prospects now looking for farms for the spring of 1978. Our Farm & Land Department specializes only in farm & rural land sales to provide the best professional service for the buyer & seller. We would welcome the opportunity to chat with you at your convenience.

**CENTRAL PA. LAND, CABINS**

Ideal for Weekend Relaxation  
Many properties have terms available

Centre County - 210 acres prime hunting ground on Nittany Mountain joining state-owned land, 2 springs, nice laying topography, owner financing, \$79,500.

19.3 Acres all tillable, along Rt. 45, excellent location \$29,500.

1 Acre - top of Centre Hill Mountain, Cabin - \$10,000.

3.38 Acres - wooded lot in Corl Acres subdivision in Ferguson Twp., approximately 4 miles from State College \$20,000.

189 Acres - wooded, adjoining State ground - privacy - could be split - \$72,765

68-Acres - wooded, good hunting area - price reduced! \$29,500.

218.9 Acres - wooded ground, stream, good hunting - Priced at \$350 an acre

100 Acres - wooded - two springs, excellent weekend home - excellent hunting

39 Acres - wooded - frontage on Penn's Creek - \$17,000

100 Acres - pond, orchard and woodland - excellent hunting and fishing - \$75,000

35 Acres - two acres clear - balance wooded - some nursery stock \$21,000

50 acres at \$450 an acre; (with year round spring), light timber, good bird hunting, electricity available, suitable for building a cabin

Mifflin County - 15.98 Wooded acres with excellent A frame home, good hunting area, ideal for weekend retreat. \$48,500.

Huntingdon County - Located near Huntingdon and the Raystown Dam, 150 acres of woodland, good access, many streams, nice view, good hunting \$65,000.



**FARM & LAND DEPARTMENT**

Evenings Call.

Don Myers PH (814) 422-8111  
Fred Strouse PH (814) 364-1705  
F J Kissinger PH (814) 466-7372

245 South Allen St. State College

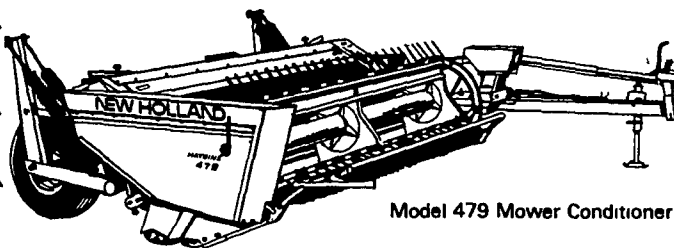
PH: (814) 234-4000

"Serving Central Pa. Since 1933"

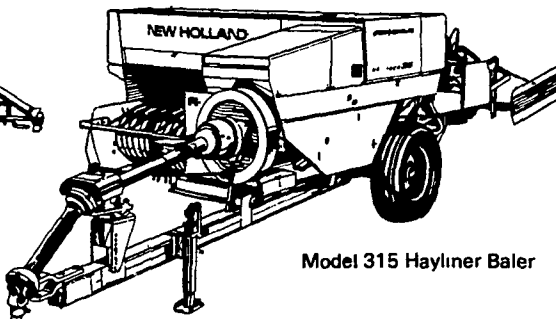


**SPEERY-NEW HOLLAND**

OUR POLICY ON MACHINERY PARTS & SERVICE  
● QUALITY FIRST ● AT A FAIR PRICE



Model 479 Mower Conditioner



Model 315 Hayliner Baler

**THE SEASON IS HERE  
WE HAVE THE HAY TOOLS TO  
HANDLE YOUR WORK LOAD**

**WAIVER OF FINANCE ON SPREADERS &  
MIXERS TILL AUG. 1ST.  
HAY EQUIPMENT TILL JUNE 1, AND  
FORAGE EQUIPMENT TILL SEPT. 1, 1977**

**Used Equipment**

- Int. 4 Bot. plow
- 276 N.H. Baler w/thrower
- AC 302 baler w/engine
- Load King forage box
- (2) Grove Forage boxes w/wagon running gears
- IH 370 disc harrow 11 ft.
- ARPS HD Manure Loader
- Farmall MD tractor
- AC model C tractor
- 300 Far. Tractor
- 1880 NH forage harvester w-cab & 3 row head
- NH 350 Grinder-mixer
- NH 351 Grinder-mixer
- 180 Bu. Starline Spreader (excellent cond.)
- A.C. Gleaner Combine w/grain Head & corn Head
- (2) 18 Ft. Hayrack wagons
- (2) 10 Ft Brillion cultipackers

**SPREADERS AVAILABLE**

**WE HAVE FERTILIZER FOR LAWN &  
GARDEN PLUS-GRASS  
CONDITIONERS,  
WEED & FEED**



**FARMERS' FERTILIZER**

**We have planters in stock  
Priced to move -  
Air & Conventional, 2, 4, and 6 Row**

AUTHORIZED



PARTS and SERVICE



MODEL YM155D,  
4-wheel drive  
MODEL YM155  
2-wheel drive)

**YANMAR**

AVAILABLE IN 13-15-24 H.P.  
ALL - 2 CYLINDER DIESELS

The Diesel Tractor with the necessary muscle, small size, short turning radius and operating economy for mowing, digging post holes, small area plowing-harrowing-cultivating, hauling and many more uses.

CALL OUR FRIENDLY SALESMAN

**BOB GANTZ** OFFICE 397-5179  
or 687-6002  
Home 653-5020



**SALES AND SERVICE  
PARTS AND EQUIPMENT**

**L. H. BRUBAKER, INC.**

350 Strasburg Pike Phone 717-397-5179

