

The Rolland home

[Continued from Page 48]

birds in the place of what had been the hay mows and granary and barn floor sections.

The living room formerly was the hay mow, with floor joists and black walnut floor from the Bucks County added.

"This room is a great area for entertaining," Mrs. Rolland points out.

The room's atmosphere is created by its depth (it measures 20 by 40 feet), which Mrs. Rolland has accentuated with two double trees (a piece of wooden equipment used to harness horses to a carriage) suspended from the ceiling and used to support hanging flower baskets. The family also has a swinging wicker chair hung from above.

Adding more flavor to the room are the windows. They are long, narrow vertical portals which serve three purposes—they allow the sun to brighten the area, they accentuate the height of the room, and they replicate the ventilation slits built into barns. Similar windows adorn each wall of the house, and each room they illuminate has a different flavor.

For instance, the kitchen. It is the most "enjoyed" room of the house, and features Rutt cabinets made from birchwood and stained with yellow alcohol to let the grain exposed; counter tops created from handmade ceramic tile, and a floor surfaced with handmade Mexican tile.

Other rooms in the home are the master bedroom



This is a shot of the dining room and entranceway to the kitchen in the home of the William Rollands.

which is in the loft area with the beam structure exposed. Below all this, on the granary level, is an apartment for William Rolland's mother and some office space. The downstairs foyer floor leading into the apartment and office is made of crosscut logs of cherry, walnut, and oak wood. Also in this foyer area is a brick wall constructed from red bricks originally used to seal the entire granary from rodents.

"The brick was formerly under the wood, which we pulled off. Then, we decided to move the brick into the foyer and decorate the wall

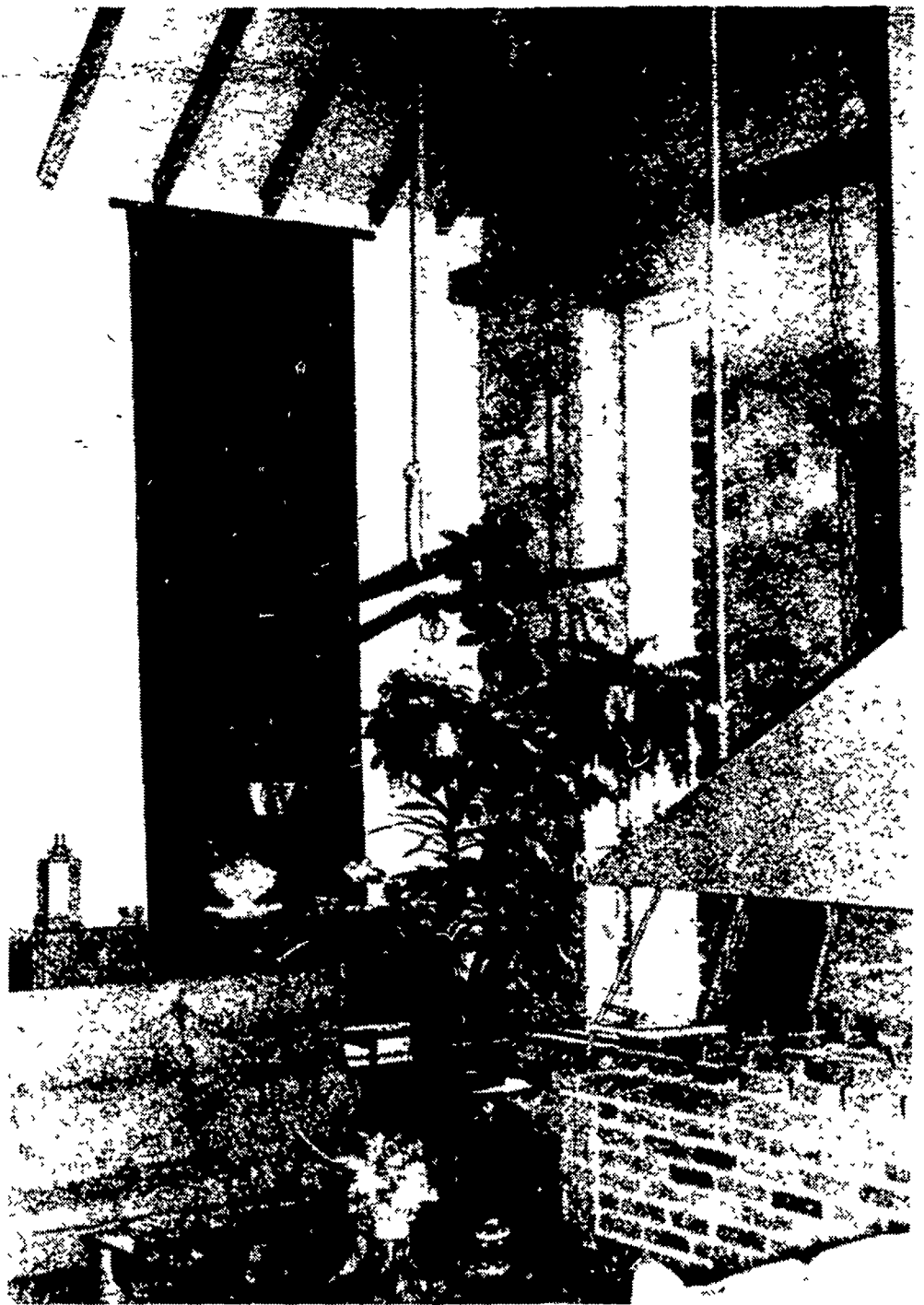
to exemplify what the barn construction was really like," Mrs. Rolland explained.

To move between the many levels of the house, the Rollands built a 12 x 12 foot cinderblock structure which is sunken in the ground and runs the whole height of the dwelling.

The structure is multipurpose, housing two wood boxes, three fireplaces, a circular stairwell, and all the separate flues for the fireplaces.

"There's not a bit of space wasted with that box," Mrs. Rolland points out. The major fireplace in the upstairs living quarters is faced with stone taken from the walls of the barn when windows were set in, offering a very attractive addition to the living and dining rooms.

As can be imagined from the size of the rooms and the open space, heating can be a problem with this barn, as well as many others.



The living room in the remodeled barn is an excellent place to do entertaining, says Mrs. Rolland. She has accentuated the depth of the room by adding a hanging wicker chair and a

double tree with house plants attached. The elongated windows also highlight the room with its 30-inch thick stone walls.

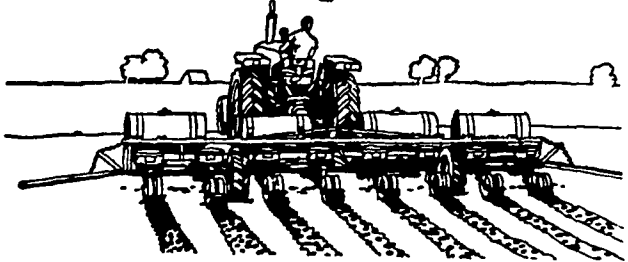
"Heating isn't difficult," noted Mrs. Rolland, "but it is expensive." They heat with electric.

But, for the Rollands, the heating bills aren't enough to detract from their unique house.

"I always thought that it would be nice to live in a barn," notes Mrs. Rolland. "And, if there is one thing we tried to achieve, it was that the house would always look like a barn." They have achieved that goal.

Arcadian Liquid.

Now's the time to give corn a good start.



Plant and feed more acres per day with liquid starter. Seedlings develop faster, roots grow bigger, maturity comes earlier when you plant and feed an Arcadian SLF premium liquid starter. It provides the nourishment germinating seeds need for a vigorous start in the critical early stage of growth. High analysis phosphate from POLY-N^o, Golden URAN^o liquid nitrogen, potash, secondary elements, micronutrients, even pesticides.

can be prescription-mixed to suit your soils and crops. And SLF liquid saves time and labor. The Gumz Farms in Indiana, plants 1300 acres of corn 50% faster since switching from dry to an SLF liquid starter. If you want to get your corn off to a running start, then count on us and SLF premium grade liquid starter.



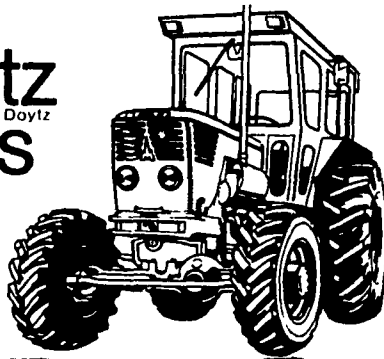
See me now.

JOHN Z. MARTIN

New Holland R#1

Phone 717-354-5848

Deutz gives you



power

ON ALL FOUR WHEELS

Four-wheel drive lets you work wet fields where two-wheel tractors can't go. You get extra traction—up to 49% more driving-wheel contact. Less rear wheel slippage. Extra flotation. The Deutz air-cooled diesel engine is famous for fuel savings. Four-wheel drive gives you even greater savings. Ask for a field demonstration and see why you should switch to one.



Tractors

STAUFFER DIESEL, INC.

312 W. Main St.

New Holland, PA

Ph. 717-354-4181

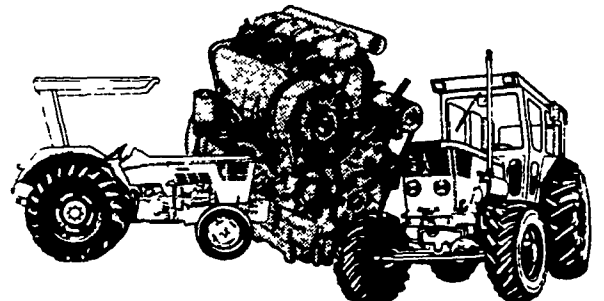
DEUTZ The most carefully engineered tractor in the world.

Termites? Ehrlich in. Termites out



EHRlich PEST CONTROL • SINCE 1928
1278 Loop Road - Lancaster, Pa. 717-397-3721

ASK US ABOUT THE **DEUTZ** 2-YEAR OR 2000-HOUR ENGINE WARRANTY



All Deutz air-cooled diesel tractors purchased after January 1, 1977 carry this outstanding parts and labor warranty on the engine and cooling system, except the injector and electrical systems. Come in and check the complete written warranty.

