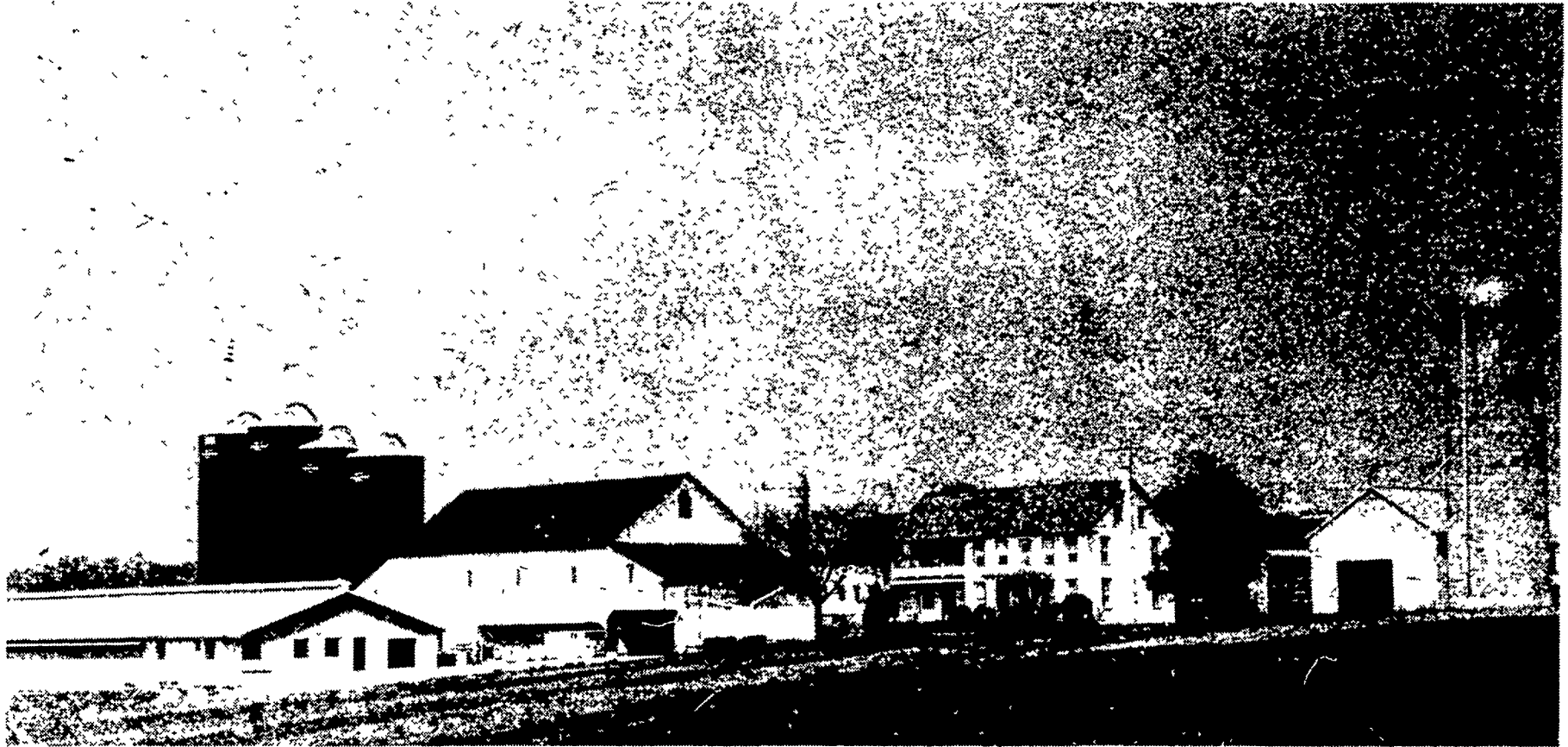


CONGRATULATIONS TO THE ROHRER'S For Good Farm Management



When Robert Rohrer decided to make haylage instead of hay, he turned to HARVESTORE.

He tells why:

BOTTOM UNLOADING — "Harvestore was the only one with a proven bottom unloader. Theirs worked best while the others were still experimenting."

SERVICE — "It's available when needed."

OXYGEN-FREE STORAGE — "There's no spoilage. Two independent feed companies tested my haylage last Winter at six week intervals. Both samples were over 19% protein. Haylage in a Harvestore has cut my protein buying requirements."

EFFICIENCY — "I'm spending less time now to feed 200 cows than I did four years ago to feed 40 head. I feed 200 cows in about 15 minutes. Also, haylage eliminates baling, and there's less of a gamble with the weather. The labor savings are terrific."

LONG LASTING QUALITY — "I bought my first Harvestore nine years ago, and the fourth just last year. We went into it gradually. The HARVESTORE system proved well; as we expanded we kept adding on. Over the years I can see that they'll last and last. I think over the long run they're well worth it."

YES YOU CAN

Have a HARVESTORE built
for first cutting this spring
IT'S NOT TOO LATE.....

HARVESTORE BUILT FOR SPRING

NAME _____

ADDRESS _____

CITY _____ STATE _____ ZIP _____

MAIL TO:

Penn-Jersey
Harvestore Systems, Inc.
P.O. Box 91
New Holland, Pa. 17557



Penn-Jersey HARVESTORE Systems, Inc.

P.O. BOX 91

NEW HOLLAND, PENNSYLVANIA 17557