



Richard Glatfelter poses with his team of horses and carriage. Glatfelter organized the carriage parade that toured the Lititz area last Sunday. One

stop on the route was the Stanley S. Stephen farm near Lititz, where this picture was taken.

## Carriage parade tours country and city

By JOANNE SPAHR  
LITITZ, Pa. - The refreshing, cool wind was streaming through their hair, their noses were getting slightly sunburned from the warmth of the sun's rays, and whole families—grandparents, children, and grandchildren—were just generally enjoying the feel of taking their ponies and horses for a carriage ride. The day—last Sunday. The event—the 12th annual Lancaster County Horse and Pony Drive held by the Red Rose Horse and Pony Club and headed by Richard Glatfelter, 451 Petersburg Road, Lancaster.

Glatfelter has been organizing carriage drives through Lancaster County for 12 years now, although the club has only been in existence for eight of those 12. This year, Glatfelter routed the parade over country roads leading to and from Lititz, beginning at his farm. There will be 12 or 13

more drives such as this in other parts of Pennsylvania throughout the year with each drive usually 12-15 miles in duration.

"We can put well over 1000 miles on these animals in a year," Glatfelter commented.

Previously he had also said, "This is a family-type club and drive, and a small child driving a little cart is as welcome in the drive as a stately four-in-hand coach."

**READ  
LANCASTER  
FARMING  
FOR FULL  
MARKET  
REPORTS**

Fifty-one carriages took part, coming from places as Mechancisburg, Carlisle, Allentown, Spring Glen and New Jersey. Almost all were club members.

"One thing about this club," pointed out Glatfelter during a brief rest in Lititz Springs Park, "We don't have any competition—it's just for pleasure."

The big draw for the members is the common interest shared by all, and the good, wholesome family atmosphere.

"A club like this is something that grandparents and grandchildren

can share in," Glatfelter noted.

On Sunday's drive, two carriages boasted, "We (the mules) drove a Bicentennial wagon from the state of Washington." One of the teams; owned by Marshall Jones, Westtown, was comprised of a mule from a Washington wagon train and one from an Alabama train.

Other scheduled drives of the Lancaster County Horse and Pony Club will take place near Schaefferstown, Millersville, Lebanon, Pottsville, Stouchsburg; and approximately seven other towns and cities.

## Chester Co. PFA signs 1000th member

WEST CHESTER, Pa.—Dennis Derr, orchard manager of Highland Orchards, 1000 Thorndale Road, West Chester, became the 1000th family member to join the Chester County Farmers' Association recently. Derr, who is also roadside manager for the orchard, joined for several reasons, according to his wife.

"He heard about the organization and realized its value to growers and farmers," she said, pointing out that he was particularly impressed with the organization's legislative effects.

Eugene McDowell, regional organization director for southeast Pennsylvania, noted that of all the 300 lobbying efforts in the government, PFA has been rated one of the 10 most effective by legislators.

The organization in its entirety has 21,000 members in the Commonwealth and strives to be voluntary information organization which is due supported and farmer controlled.

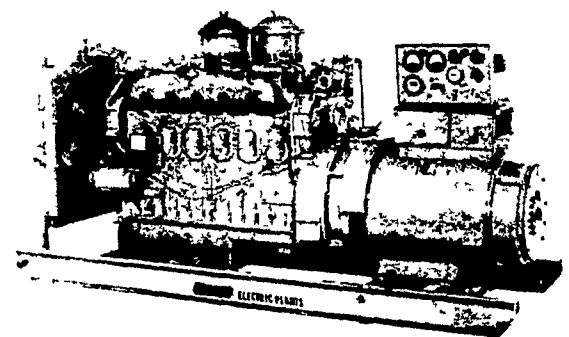
**TRY A  
CLASSIFIED**

### Electric Generating Systems

Built to Your Specifications

Manual or Automatic

L. P. Gas - Diesel - Gasoline



Sales - Service

### Martin Electric Plants

Isaac W. Martin, Owner

Pleasant Valley Rd., RD2  
Ephrata, PA (717) 733-7968

## RIDE THE MIGHTY BRUTE



the  
powerful **LONG R9500**  
*The performer that's tough to Beat!*

**97.7 HORSEPOWER  
TRACTOR**

**WITH 6 CYLINDER  
PERKINS ENGINE . . .**

LIST PRICE

**\$13,346**

F.O.B. and Back Freight and Dealer Prep.



See a demonstration today . . .  
you'll agree that we offer  
more for less money!



**AGROPHILOS, INC.**

RD1, Millerstown, PA.  
717-444-3232

**CLAPPER  
FARM EQUIP.**

RD1 Alexandria, Pa.  
814-669-9015

**COLUMBIA  
EQUIPMENT CO.**

Bloomsburg, Pa.  
717-784-7456

**I. G. AG SALES**

Silverdale, Pa.  
215 257-5136

**MELROSE  
FARM SUPPLY**

Rt. 16 West,  
Greencastle, Pa.  
717-597-3138

**LEISERS, INC.**

3608 Nazareth Pike,  
Bethlehem, Pa.  
215-691-3070

**MAIDENCREEK  
FARM SUPPLY**

Blandon, Pa.  
215-926-3851

**NEVIN N. MYER  
& SONS, INC.**

Chester Springs, Pa.  
215-827-7481

**RHODES  
EQUIPMENT**

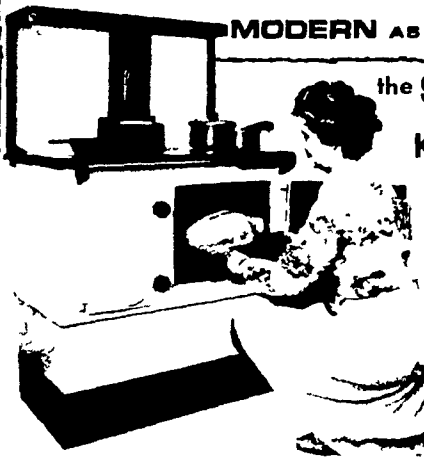
**CO., INC.**  
Southampton, Pa.  
215-677-6000

**WENGER'S INC.**

S. Race St.,  
Myerstown, Pa.  
717-866-2138

## COOK STOVE FOR WOOD OR COAL . . .

Built with Old World Craftsmanship yet  
MODERN AS TOMORROW!



the **STANLEY**

**Kitchen Range**  
from Waterford, Ireland

CHOOSE  
BLACK IRON  
OR  
WHITE PORCELAIN  
Priced  
From **\$599**

Model shown  
White with backsplash warming  
shelf and base extenders options

A household word in Ireland where the use and technology of solid fuels has never ceased the incomparable Stanley is now available to the first time in America

**AMPLE COOKING SPACE** An even heated oven large enough to roast a 25 lb turkey and a finely finished cast iron hot plate that accommodates the everyday needs of most families

**VERSATILITY** Wood coal coke anthracite or peat will give excellent results. The optional hot water unit provides a large reserve of piping hot water while radiant heat provides a gentle warmth to your kitchen. It virtually 3 units in 1 that offers cooking hot water and room heat

**EASY TO CLEAN** Stanley's beautiful vitreous enamel finish needs no pampering—a quick wipe over does the job. Inside the constantly heated oven is virtually self cleaning

**FUEL ECONOMY** Stanley's large airtight firebox maintains a fire for hours—even overnight. Twice a day fueling is economical and convenient

Invest in a lifetime of comfort and service with a Stanley Kitchen Range quality crafted by Waterford Ironfounders Ltd. Write for the name of your local dealer!

Distributed By **WOOD HEAT**  
Rt 212 Pleasant Valley, Quakertown, PA 18951  
Phone (215) 346 7894  
Limited Number of Dealerships Still Available