

# Livestock market and auction news

## Des Moines

April 27, 1977

Compared to Tuesday's close, beef trade closed slow. Demand light to moderate. Steer and heifer steady to 1.00 higher. No reported primal beef cut or cow beef sales. Sales on 81 loads steer and heifer beef confirmed.

### Steer Beef

31 Confirmed Loads  
Choice 2 600-800 lbs. 66.50; Choice 3 600-800 lbs. 64.50-65.50 steady to 50 higher; Choice 4 600-900 lbs. 60.50-61.00 50-1.00 higher.

### Heifer Beef

50 Confirmed Loads  
Choice 2 500-700 lbs. 63.75; Choice 3 500-700 lbs. 62.75 unevenly steady; Choice 4 500-700 lbs. 59.00; Good 2-3 500-700 lbs. 58.75 load.

### Cow Beef

No Confirmed Loads

### Choice 3

Primal Beef Cuts

No Confirmed Loads

### Beef Trimmings

14 Confirmed Loads

BEEF TRIMMINGS 50 per cent Chem lean (fresh) 34.00.

(Compared to Tuesday's close, fresh pork cut trade moderate to slow. Few sales loins 14-17 lbs. 2.00-3.00 higher; picnics 4-8 lbs. 1.00 higher; skinned hams 17-26 lbs. 1.00-2.00 higher; other cuts not well established.

### Fresh Pork Cuts

LOINS 14-DN lbs. 80.00 trimmed, fresh, export; 14-17 lbs. 73.00-74.00 2.00-3.00 higher; 14-17 lbs. 74.50-75.00 ship Friday and next week; 17-20 lbs. 67.25.

PICNICS 4-8 lbs. 42.00 1.00 higher; 8 & up lbs. 40.75-41.50.

BOSTON BUTT 4-8 lbs. 52.50 late Tuesday.

SKINNED HAMS 17-20 lbs. 65.00 1.00-2.00 higher; 20-26 lbs. 64.00-64.50 1.50 higher.

BELLIES, SDLS 12-14 lbs. 56.50-57.75; 14-16 lbs. 56.00-56.50; 16-18 lbs. 53.50-55.00; 18-20 lbs. 51.50-52.75.

BNLS CT BUTT 1<sup>1</sup>/<sub>2</sub>-3 lbs. 85.50 frozen, export; 3-4<sup>1</sup>/<sub>2</sub> lbs. 82.00-82.50 frozen 50-75 higher.

## Joliet Cattle

April 27, 1977

CATTLE: 2900. Trading active. Slaughter steers 1.00 to mostly 1.50 higher. Heifers 1.00-1.50 higher. Supply about 30 per cent heifers. Steers and heifers mostly Choice.

SLAUGHTER STEERS: High Choice and Prime 3-4 1150-1375 lbs. 42.25-42.50. Load 42.75. Choice 2-4 1050-1400 lbs. 41.00-42.25.

SLAUGHTER HEIFERS: High Choice and Prime 3-4 950-1100 lbs. mostly 41.00. Load 41.25. Choice 2-4 900-1100 lbs. 40.00-41.00.

April 28, 1977

Friday through Wednesday salable receipts 7371: 5 days last week 6304: same period last year 8502. Slaughter steers 1.00 to mostly 1.50 higher than last Wednesday. Slaughter heifers 1.00 to 1.50 higher than last Wednesday. Supply mostly Choice steers and heifers.

SLAUGHTER STEERS: High Choice and Prime 3-4 1150-1375 lbs. 41.00-41.25 Monday, 42.25-42.75 Wednesday. Choice 2-4 1050-1400 lbs. 39.50-41.00 Monday, 41.00-42.25 Wednesday. Load Choice Holsteins 2-3 about 1350 lbs. 37.00 Wednesday. Mixed Good and Choice 2-3 900-1250 lbs. 38.00-39.50 Monday, 39.50-41.00 Wednesday. Mixed Good and Choice Holsteins 2 1150-1375 lbs. 35.00-36.50.

SLAUGHTER HEIFERS: High Choice and Prime 3-4 950-1100 lbs. 39.50-40.00 Monday, 41.00-41.50 Wed-

## READ

LANCASTER  
FARMING  
FOR FULL  
MARKET  
REPORTS

## East Coast Carlot Meats

Compared to Tuesday's close: Demand and commitments moderate for most meat items as reported by the USDA. 21 Loads Steer and heifer beef confirmed. Choice 3 steer beef .50 higher. No comparison on heifer beef or cow beef. Boneless beef .50-1.00 higher on 90 PCT chem lean. Veal steady to 2.00 higher, instances 3.00 up. Fresh pork loins firm.

### STEER BEEF

(20 LOADS CONFIRMED)  
Choice 3 selected 600-700 lbs load 6900 no comparison; 3 600-800 lbs 6800-6900 .50 higher; 4 600-900 lbs load 6450 firm.

### HEIFER BEEF

(1 LOAD CONFIRMED)  
Choice 3 550-700 lbs 6600 no comparison.

### COW BEEF

(3 LOADS CONFIRMED)  
Utility BNG 1-3 600 lbs up load selected 5700 no comparison.

Canner-cutter 1-2 350 lbs up load 5950 no comparison; 350 lbs down load 5600 no comparison.

### CHOICE 3

PRIMAL BEEF CUTS (5 LOADS CONFIRMED)... Full Plates 3200-3450 steady  
Short plates 3300-3400 1.00-1.50 higher  
Briskets LTD 4000 firm

Flanks untrimmed 3350 2.00-3.00 higher-

### VEAL CARCASS

#### HIDE ON

Prime (special fed) 180-250 lbs 117.00-118.00 steady  
High standard to low choice Northeastern Suppliers all 1.00-2.00 higher, instances 3.00 higher; 34 lbs down 4800, few 5000; 35-44 lbs 5000, few 5200; 45-54 lbs 5200, few 5400; 55-64 lbs 5400, few 5600; 65-75 lbs 5600, few 5800.

Midwest and west coast suppliers all steady to 2.00 higher; 30-40 lbs 5000-5200; 40-50 lbs 5200-5400; 50-60 lbs 5400-5600; 60-70 lbs 5600-5800; 70-80 lbs 5800-6000.

### FRESH PORK CUTS

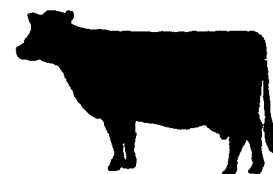
Loins 14-17 lbs 7750 firm.  
Skinned hams 17-20 lbs part load 6750 no comparison.

CURED AND PROCESSED MEATS (14 LOADS CONFIRMED)

Skinned hams 16-19 lbs 7000 3.00 higher.  
Semi boneless hams 17-20 lbs 8700 no comparison  
Picnics 5-7 lbs 5400 generally steady  
Franks 70 beef, 30 pork 1 lb pack 6000 steady  
Bologna 70 beef, 30 pork 1 lb pack 6300 steady  
BONELESS BEEF (4 LOADS CONFIRMED)

TRY A CLASSIFIED

90 pct chem lean, fresh 8100-8200 .50-1.00 lower  
85 pct chem lean, fresh 7100 no comparison  
BEEF TRIMMINGS (4 LOADS CONFIRMED)  
50 pct chem lean, fresh 3500 steady to 1.00 higher



**LIQUID NITROGEN**  
FOR SMALL GRAINS, PASTURE, CORN  
CUSTOM APPLIED FAST AND ACCURATELY  
WITH MODERN EQUIPMENT

- CUSTOM CROP SPRAYING
- SCHLESSMAN SEED CORN
- AGRICULTURAL CHEMICALS & LIME

FOR PROMPT SERVICE  
CALL NOW:  
**L. W. ZIMMERMAN JR.**  
Rehlersburg, Pa. 19550  
PH: 717-933-4360

**Case 1805 MOUNTED CHISEL PLOW, 2 BAR**

Hi-clearance shanks, 1 1/4" x 2" x 32" (32 x 50.8 x 813 mm). spring cushion clamps for shanks, with twisted Shovels.

MODEL	WIDTH	SHANKS
1805-5	5' (1.52m)	5
1805-7	7' (2.13 m)	7
1805-9	9' (2.74 m)	9

TOOTH	FOB OUR LOT	Set up	Not Set up
5-TOOTH	7-TOOTH	9-TOOTH	
Set Up \$660	Set up \$828	Set up \$1010	
Not Set up \$620	Not Set up \$780	Not Set up \$970	

WEIGHT  
620 lbs. (281 kg)  
734 lb. (333 kg)  
870 lb. (397 kg)

ABOVE PRICES DO NOT INCLUDE GAUGE WHEELS

**Special prices now on chisel shovels to fit any make chisel plow**

**SALES & SERVICE**  
**BINKLEY & HURST BROS.**  
133 Rothsville Station Rd. Lititz, PA 17543 Phone (717) 626-4705