

Dauphin COUNTY DHIA MONTHLY REPORT

MARCH 1977

One Dauphin County cow, "Connie," had the high marks for both milk and butterfat for lactations completed during March in 305 days or less. Owned by J. Melvin Brandt, the 9-year old Holstein pumped out 21,030 pounds of milk with a 3.8 test for 802 pounds of butterfat. The high daily average for the month was garnered by John Hertzler.

OWNER BREED	NO. COWS	% COW DAYS IN MILK	MILK LBS.	% FAT	FAT LBS.
John Hertzler H	66	92.4	49.8	4.3	2.13
Robert J. Schaffer H	55	91.8	53.1	4.0	2.12
Larry L. Boyer H	22	95.2	50.8	4.1	2.06
Elwillo Farms H	97	88.8	50.8	3.8	1.93
Stanley R. Long H	61	96.1	48.5	3.9	1.90
Restful Acres H	40	91.3	46.8	4.1	1.90
Paul L. Crissinger H	66	91.2	46.7	4.0	1.88
J. Richard Alwin H	49	88.7	50.0	3.6	1.80
John Roy Book H	48	87.5	45.3	4.0	1.79
Stoney Lawn Farms H	98	93.7	45.3	3.8	1.73
Roy C. Wilbert H	39	95.2	44.0	3.9	1.72
Catalpa Farms H	71	95.9	43.4	4.0	1.72
Harold M. Nissley H	43	87.7	40.9	4.2	1.71
Homer Campbell H	73	94.5	42.8	4.0	1.71
Stanley R. Long H	63	94.1	45.1	3.8	1.71
Conewago Farms H	94	86.5	39.8	4.2	1.67
J. Richard Alwine H	48	86.5	47.0	3.6	1.67
Lytle Farms Inc. H	74	92.0	40.6	4.1	1.65
Floyd Feidt M	61	83.8	42.3	3.8	1.62
Frank & Mary Coover H	39	92.4	45.0	3.6	1.61
Catalpa Farms H	69	91.5	39.7	4.1	1.61
Walter Schaffer H	24	90.5	37.5	4.2	1.58
Pegmar Farm H	30	93.8	39.4	4.0	1.57
Keystone Guernsey Farm G	61	83.6	30.8	5.0	1.54

G. S. Huntzberger H	55	83.1	39.4	3.9	1.52
Grand View Farms H	72	92.9	39.2	3.9	1.52
Great View Farms H	23	87.2	42.0	3.6	1.50
Robert Oellig M	38	91.6	32.4	4.6	1.49
R Own Dairy Inc. H	87	92.6	41.8	3.6	1.49
Robert H. Beach Jr. H	35	82.8	36.1	4.1	1.49
Lebo Brothers G	39	76.2	30.6	4.8	1.48
J Melvin Brandt H	71	80.3	37.5	3.9	1.48
Earl E. Keefer A	64	81.0	35.1	4.1	1.45
Harvey Schroll M	48	78.2	36.1	4.0	1.44
Calvin B. Mauser G	60	76.2	29.0	4.9	1.43
Frank Wagner Jr. M	24	88.1	28.0	5.1	1.43
Lauden Farms H	95	71.0	34.6	4.0	1.38
Stanley Wilt H	52	92.5	35.6	3.8	1.35
Grand View Farms H	67	93.9	37.3	3.6	1.34
Lee R. Sweigard H	20	81.2	33.5	3.9	1.31

[Continued on Page 91]

Neither too **BIG** or too **SMALL**...

KUBOTA® The In-Between TRACTOR

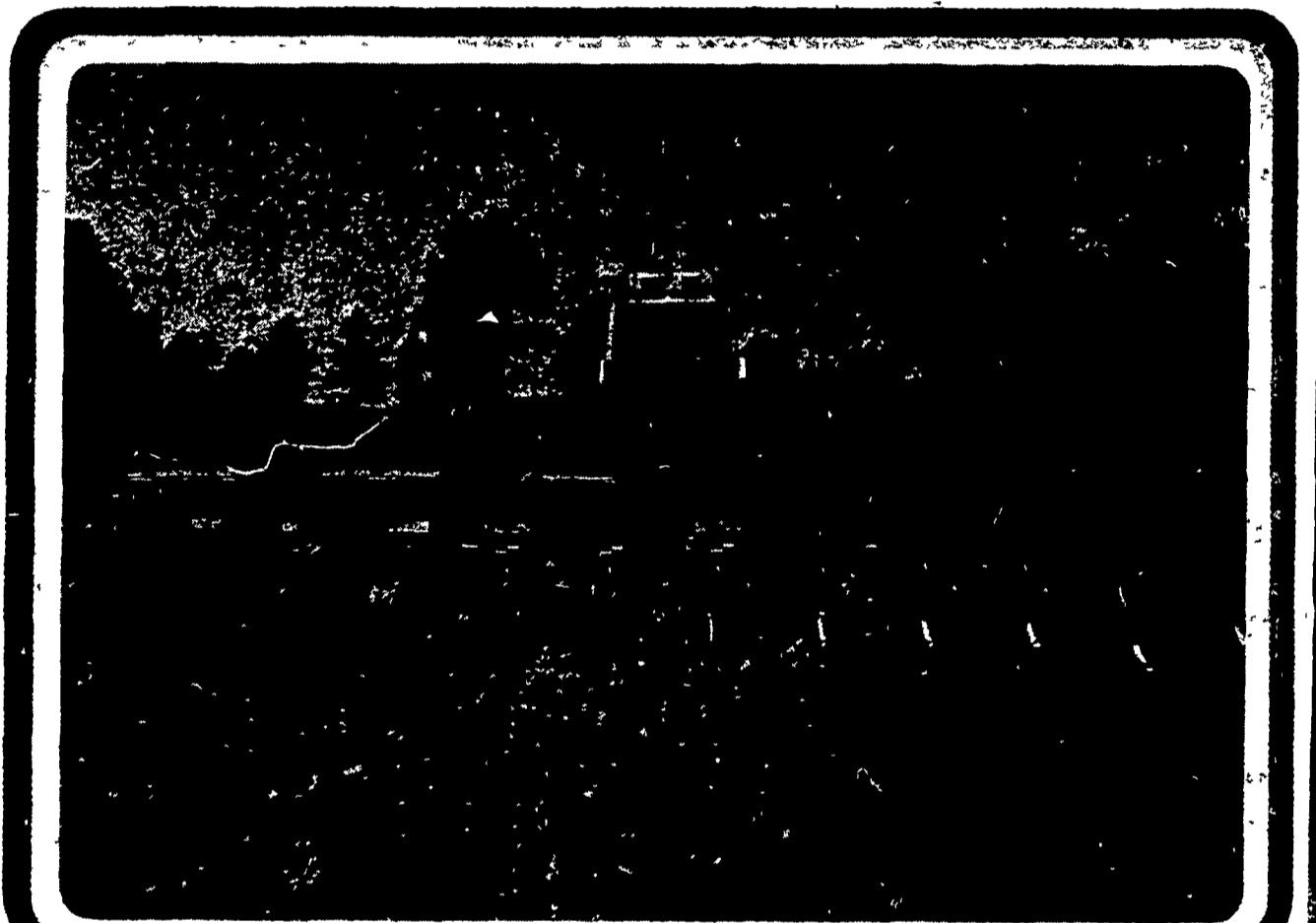
L225
 ■ New Kubota workhorse can be depended upon to perform efficiently, economically day after day

B6000T
 ■ This tractor is big on work, small on fuel. Liquid cooled, 2-cylinder diesel, 2-wheel drive. Takes a full range of implements

KUBOTA®
 85 years of customer satisfaction

SEE US FOR THAT EXTRA SPECIAL DEAL

KELLER BROS. TRACTOR CO.
 Buffalo Springs Call (717) 949-6501
 10 Miles North of Lititz



"Kick" up corn profits with Unipel® Starter Special 13-34-10.

This is the "corn-popper" special...the most imitated pop-up fertilizer on the market. As part of a Unipel corn fertility program, it suits perfectly the young corn plant's immediate craving for nutrients to develop a good root system, the starting point for top yields.

Yet, it's also a complete fertilizer with these key nutrients available in each Unipel pellet:

- * quick-acting, non-volatile nitrate Nitrogen that starts working immediately, even in cool, wet, early-season soils;
- * slow-acting ammoniac Nitrogen that provides continued feeding through the growing season;
- * both quick and slow acting Phosphorus to resist fixation, team with Nitrogen to become more efficient and feed plants for solid growth, help develop strong root systems;
- * vital Potash to furnish young plants with building blocks for strong roots, tough and hardy stalks to resist weather and stress of pests and disease.

We can recommend to you the program details for a sound Unipel fertility program —which, on Starter alone, has returned over \$30 an acre above fertilizer investment more than blend "bargain" programs.

ORTHO FERTILIZERS

P. L. ROHRER & BRO., INC.

SMOKETOWN, PA

PH. 717-299-2571

CHV 976-5-3



Ask about our new FARMOWNER'S policy. It is designed to give you the very broadest coverage at the most reasonable cost. We believe it is the finest policy you can buy. See our agent in your area

GEO. W. BARD & SON
 423 W. James St., Lancaster, PA

ROY L. BOMBERGER
 Elm, PA

ROBERT M. BOOK, INC.
 207 E. State St., Quarryville, PA

WALTER STUMP
 RD2, Pine Grove, PA