

**Help Wanted**

Reliable experienced married man wanted to operate a dairy farm in Hartford Co., near Chur-chville, MD. 2 bedroom house furnished. 301-879-5309.

Man wanted to help with general farm work. Hogs and tobacco. 717-665-4920.

Full-time news person wanted for farm publication. Farm background a must. Formal education or previous writing experience required. Box 266ZZ, c-o Lancaster Farming, Lititz, Pa. 17543

**A NEW PARTY-PLAN CO. Starting This Area.** Part-time (2) evenings weekly. Do Home-Decorating and Floral Designing Shows. Earn \$50 to \$100 per show! Managers also needed. Call 7 days (215) 433-2211 or (215) 435-6711.

**Wanted**

Reliable married man with initiative for job on cattle farm. One man operation working as combination farmer and caretaker. Must be handy with tools or general farm and home maintenance. Four bedroom home provided on premises. Phone 215-384-7592

**Household Goods**

**WOOD HEATERS**

SAVE 75 percent on Heating Bills. Cast iron Norwegian box stoves, Franklin fireplaces, thermostat controlled, cabinet models, air tight construction. An all stainless steel chimney pipe and accessories.

Call 215-346-7894

Rt. 212 Pleasant Valley Quakertown, PA 18951

**FERTILIZER**

Attention Farmers - Big Savings on Broiler Poultry Manure. We will deliver any amount, anytime or place in Lancaster County for \$10.00 per ton net delivery. Send inquiries to Box 266E, c-o Lancaster Farming, Lititz, Pa. 17543

**SPECIAL SALE**

Dry Poultry Manure. Fresh from the broiler houses. \$15.00 per ton plus delivery. Write Box 27, Strasburg, PA 17579

**SPECIAL DRY POULTRY MANURE.**

Fresh from the broiler house. 717-935-2180.

**SAVE FERTILIZER DOLLARS**

By using Poultry Manure. Delivered for \$15.00 per ton.

Peat Moss and Mushroom Soil delivered for \$65.00 per dump trailer load. 717-733-0052

**Trucks**

For Sale - 1958 Chevy cattle truck, 14 ft. body, motor and body good. 215-445-5647.

For Sale - 10 1/2' Wolverine pick-up camper, self-contained. Ph: 717-786-3437.

For Sale - 1971 Ford ton truck with cattle racks, good condition, \$2000. Ph: 717-582-2352.

1972 crew-cab truck with utility body and cap. Will make good camper. 215-562-3966.

For Sale - Int. V-8 18' bed completely reconditioned, new paint. 717-548-3402.

For Sale - 40' Fruehauf aluminum pot cattle trailer. Two 40' Strick vans. Two 40' Gindy vans. 6 hay or tomato trailer-4 storage trailer - \$500 and up. Samuel Keens. 717-626-5420.

**Trucks**

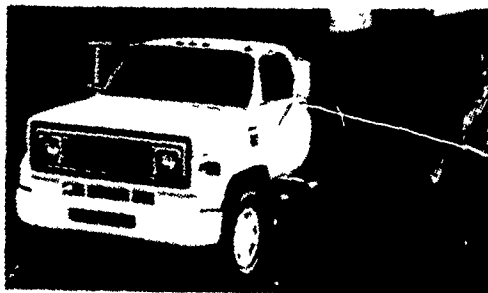
For Sale - 3 trucks, '71 GMC, Vandura, 3/4 ton van, 125 in. wheelbase. '73 International, '74 GMC, both with 14' Morgan insulated bodies. Original owner. Low mileage. Hauled eggs. Retiring. Stroudsburg. 717-992-4743.

**Trucks**

**FOR SALE**

61' cab over Ford truck reconditioned engine, 26,000 GW. Phone 717-392-1583

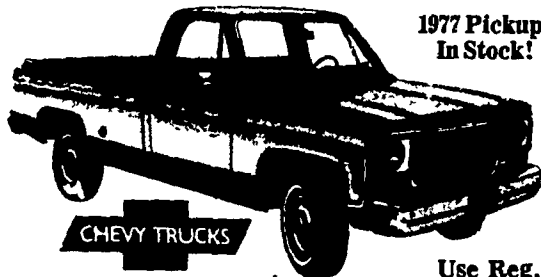
**BUY THIS TRUCK FOR 5% ABOVE DEALER COST!**



65 Series CAB & CHASSIS, 189" Wheel Base, 124" Cab to Axle, 5 Speed Trans., 2 Speed Rear, Power Steering and 1,000 Rubber. IN STOCK & READY TO GO!

**5% ABOVE DEALER COST!**

...That's All You Pay For Any New Car or Truck In Stock or Ordered From Us!



1977 Pickups In Stock!

Use Reg. Gas!

Pay Only 5% Over Invoice!

For More Information Contact Dealer:

**MENTE CHEVROLET INC.**

Kutztown, PA 19530 PH: 215-683-8787

**Make a haul. Buy your truck at Heritage.**



**HERITAGE**

Chevrolet

626-2091

Route 501 1/2 mile south of Lititz

**Trucks**

- 1977 W150, Blue, 4 wheel Drive
- 1977 B 200, V8, Auto, P.S. 127WB, Van
- 1977 3/4 ton four wheel drive Pickup (Special)
- 1976 Hornet Hatchback, 12,000 miles
- 1975 W-200 3/4 ton four wheel drive Dodge pickup
- 1975 Dart, 4 door
- 1973 IH Travelall Station, V8, Auto.
- 1964 Scout 4 x 4, good
- 1964 Wagoneer, 4x4 300 as is.

**Trucks**

**PETTICOFFER DODGE, INC.**

Route 230 East Next to Shopping Center Elizabethtown PA PHONE 717-367-1808

**LARGEST NON-FRANCHISED TRUCK DEALER IN MONTGOMERY COUNTY**

(Toll Free Number - 800-362-7655) Also Good in Area Codes 717 & 215

Drive A Little, Save A Lot... If We Don't Have It, We'll Get It For You! OVER 80 IN STOCK

- 4 WHEEL DRIVE
- '75 Dodge 1/2 ton Pickup, 360 V8, Auto, PS, PB, driven only 9,000 miles - \$5295.
- '74 Jeep Pickup, V8, Auto, QuadraTrack - \$3995.
- '73 GMC Jimmy, V8, 4 Speed, Free Wh Hubs - \$3995.
- '73 Chevy Suburban, V8, Auto, PS, 5 Pass, Custom Delux, Free Wh Hubs - \$4895.
- '72 Jeep Commando, 6 Cyl, 3 Sp, 4 Wheel Drive & Free Wheeling Hubs, 2 Tops, AM Radio - \$2495.
- '68 Int. Scout with Hyd. Plow, V8, 3 Speed, Free Wheeling Hubs - \$2395.

- '73 Ford with Cap, V8, Stick, only 22,000 miles - \$3495.
- '73 Ford 1/2 Ton, Ranger Package, 8 Cyl, 4 Spd, PS, PB - Now \$3195.
- '73 Dodge 1/2 Ton Pickup, Club Cab, V8, Auto, PS, 2-Tone Paint - \$3195.
- '72 Ford 1/2 Ton Pickup, Explorer Package, V8, Auto., PS, PB, AC - \$2995.
- '71 Ford 1 Ton Stake Body, V8, 4 Speed Transmission, dual wheels - \$3195.
- '67 Int. Step Van, 4 cyl, 4 Speed - \$895.

**VANS**

- '77 Dodge 1/2 Ton Van, Sh wheel base, V8, Auto, PS, Rr door windows, Lots of Extras, Driven only 210 miles - \$5695.
- '76 Dodge 1/2 Ton Van, V8, A, PS, short wheel base, high back seats - \$4895.
- '76 Ford Camper Coachwagon, V8, A, PS, PB factory air, stereo-radio, Has all the extras for camping, sleeps 4 - \$9495.
- '76 Ford E150, V8, Auto, PS, Real Clean - \$5195.
- '75 GMC Rally Six, 8 passenger, V8, A, PS, PB, AC - \$5895.
- '75 Ford Econoline 150, 6 Cyl, Auto, PS, PB, 8 Pass. - \$4495.
- '74 Chevy Beauville Van, V8, A, PS, PB, AC, 8 passenger - \$5395.
- '74 Dodge Sportsman, 6 cyl, standard shift, PS, PB, 5 passenger - \$3895.
- '74 Ford 1/2 Ton Van, V8, St Shift, PS, PB, Partially Equipped for Camping, Low Mileage - \$4195.
- '74 Dodge 1/2 Ton Van, 6 Cyl, Auto, PS, Windows Rr Door only - \$3695.
- '74 Chevy Beauville Van, V8, Auto, PS, PB, Dual Fact Air, 12 Pass, Low Mileage - \$5695.
- '73 Dodge Royal Sportman, 5 Pass, V8, Auto, PS, PB, Low Mileage - \$4295.
- '73 Ford Club Wagon, 5 Pass, 6 Cyl, St Shift, Real Clean - \$3395.
- '71 Ford Econoline 1/2 Ton Van, 6 cyl., standard shift, short wheel base, low mileage - \$2995.
- '67 Dodge Van, 6 Cyl, St Shift - \$795.

**TRUCKS**

- '76 Ford 1/2 Ton Super Cab, Bench Seat in Rear, V8, Auto., PS, Driven Only 8,600 Miles - \$5295.
- '76 Ford 1/2 Ton Pickup, Ranger XLT, V8, Auto, PS, AM-FM Stereo, Driven only 10,000 miles - \$5395.
- '76 Chevy El Camino, V8, Auto., PS, Air, AM-FM Stereo, Low Mileage - \$4995.
- '75 Ford Ranger, V8, A, PS, PB, driven only 14,000 miles - \$4695.
- '75 Ford 1/2 Ton Pickup, V8, A, PS, AM with tape player - \$3495.
- '74 Chevy 1/2 Ton Pickup, 6 1/2 Ft Bed, V8, St Shift, Wide Wheels with Spoke Rims, Low Mileage - \$3495.
- '74 Ford 1/2 Ton Pickup, Ranger XLT, 390 V8, Auto, PS, AM-FM Stereo, AC - \$3795.
- '74 Ford 1/2 Ton Pickup, 6 Cyl, St Shift, PS - \$3495.
- '74 Toyota Pickup, Auto, Bucket Seats, Clean - \$3495.
- '74 Chevy 1/2 Ton Pickup, V8, St. Shift, Real Clean - \$2995.
- '74 Dodge 1/2 Ton Pickup, V8, Auto, PS, PB, AC, Driven only 29,000 miles - \$3495.
- '74 Ford 1/2 Ton Pickup, 360 V8, w-Ranger Package, Auto, PS, PB, AM Radio - NOW \$3395.
- '74 Ford 1/2 Ton Pickup, V8, Auto, Explorer Package, PS - \$3795.
- '74 Ford Super Cab, V8, A, PS, factory air, Ranger Package - \$4695.
- '73 Chevy El Camino, V8, Auto, PS, PB, Real Clean - \$3495.

**MIKE RHODES & CO.**

Rt. 663 & Swamp Pike Gilbertsville, Pa. (215) 327-1380