

Order 2 milk price is \$9.13

NEW YORK, N.Y.—Dairy farmers supplying milk plants regulated under the New York-New Jersey marketing orders during March will be paid on the basis of a uniform price of \$9.13 per hundred pounds or 20 cents per quart. Market administrator Thomas A.

Wilson, who announced March's price, also stated that the uniform farm price was \$9.38 per hundred weight in February 1977 and \$9.65 per hundredweight in March 1976. The uniform price is a marketwide weighted average of the value of farm milk used for fluid and

manufactured dairy products.

The seasonal incentive fund (Louisville Plan) removed a total of \$1,664,947.63 or \$.20 per hundred weight from the dairy farmers' uniform price for March. Deductions for this fund will continue

through June and will be returned in the August through November uniform price calculations.

The total amount of milk received from the 19,134 dairy farmers supplying the New York-New Jersey Marketing Area was 832,473,814 pounds during March 1977. This was more than 6 million pounds below

last year. The gross value to dairy farmers for milk deliveries was \$77,198,067.38. Wilson explained that this included differentials required to be paid to dairy farmers but not voluntary premiums of deductions authorized by the farmer.

Regulated milk dealers (handlers utilized 403,240,713 pounds or 48.4 per cent of the total amount of milk for Class I. The Class I milk is used for fluid products such as homogenized, flavored, low-test and skim milks. For March 1977, handlers paid \$10.59 per hundredweight for the milk used in Class I products compared with \$11.30 a year ago.

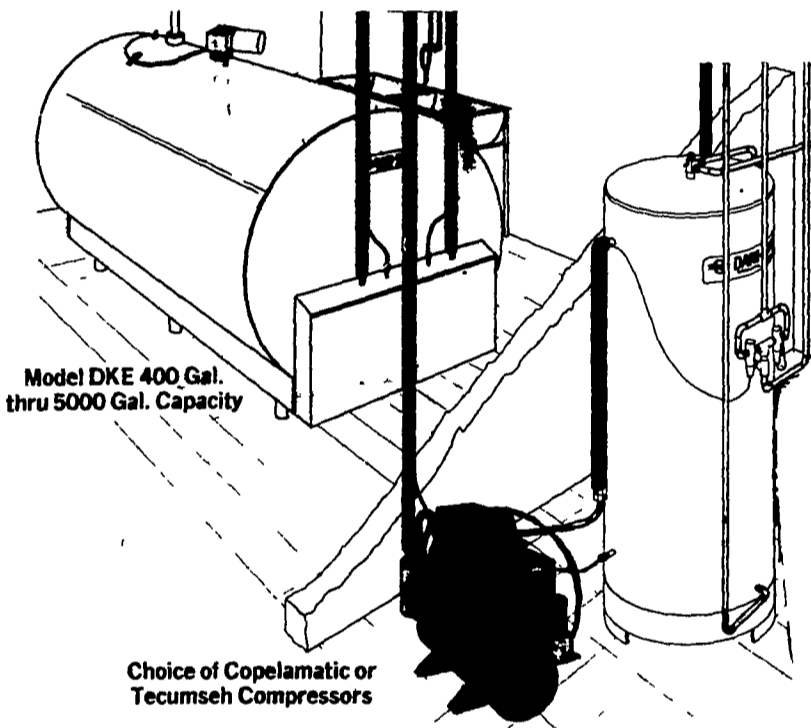
The balance of milk, 51.6 per cent, was used to manufacture Class II products including butter, cheese, ice cream and yogurt. For this milk handlers paid \$8.26 per hundredweight.

The uniform price is based on milk containing 3.5 per cent butterfat. For March 1977, a differential of 10.7 cents was applied to the price for each one-tenth of one per cent that the milk tested above or below the 3.5 per cent standard.

All prices quoted are for milk received within the 201-210 mile zone from New York City.

BOU-MATIC COULD BE THE ANSWER TO SOME OF YOUR MILKING PROBLEMS.

Call us for an explanation of the Bou-Matic concept for good milking



THERMA•STOR THE ENERGY SAVER.

- Makes 50 Gallons Of Hot Water At Up To 190 Degrees Every Time You Milk
- Makes A Gallon Of 110 Degrees Water For Every Gallon Of Milk Cooled
- Completely Eliminates Fan-Cooled Condensers
- Has Stainless-Steel Heat-Exchanger And Storage Sections For Maximum Corrosion Protection

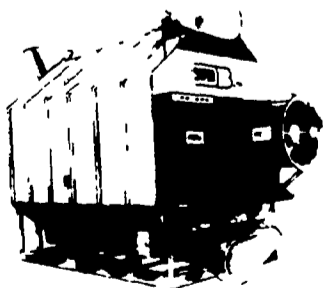
CLEAN USED MILK TANKS

- | | |
|--------------------------------|----------------------------|
| 600 Gal. Mojonner Vacuum | D2 - 400 Gal. Girton |
| (2) 400 Gal. Mojonner vacuum's | (2) D4 - 300 Gal. Girton's |
| 600 Gal. Steinhorst | 500 Gal. Jamesway |
| D2-500 Gal. Girton | |

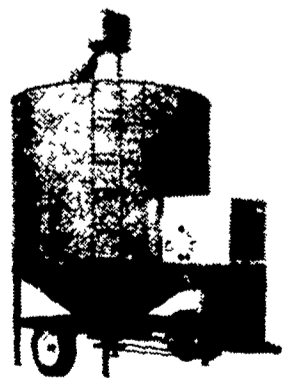
COMPRESSORS

- 5 H.P. Dunham Bush compressor
- 5 H.P. Lehigh compressor
- (2) used 3 H.P. Lehigh compressors, belt driven

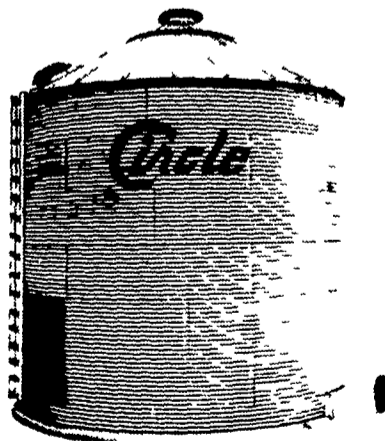
GRAIN DRYING EQUIPMENT



SUPER B AUTOMATED BATCH GRAIN DRYER



GT BATCH RECIRCULATING



CIRCLE GRAIN BINS FEED BINS

SALES—INSTALLATION—SERVICE

SHENK'S FARM SERVICE

501 E. Woods Drive Lititz, PA 17543 Phone 717-626-1151

New Tripoli Area - Phone (215) 767-7611

Quakertown Area - Phone (215) 536-1935

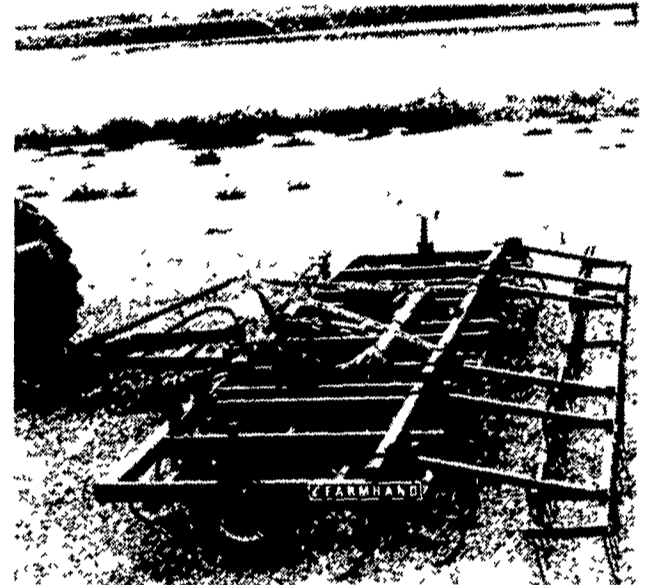
Bulk tanks & Therma-Stor

After 5 P.M. Call Titus Burkholder 717-859-1620

Our Service Trucks Are Radio Dispatched

24 HR. SERVICE OFFERED

What's new



FIELD AND ROW CROP CULTIVATORS

A new line of field and row crop cultivators with S-shaped vibra-tines for high-speed cultivation and soil shattering action has been introduced by Farmhand, Inc., Hopkins, Minn.

Row-crop cultivators of this "S" or Danish tine

design are noted for increased soil shattering action as field speeds rise. Spring action of the tine is concentrated in the S-curve to break up hard ground without rolling up soil clods to cover plants. Tines are staggered on 46 inch long gangs to insure trash flow without plugging. The gang design permits infinite tooth adjustment on individual mounting bars to match field conditions. Each cultivator mounts on category II or III-3-point or quick hitches. Folding wings are hydraulically activated allowing the operator to go from field to transport position without stopping.

Field cultivators are available as pull-type or 3-point hitch units. All models are standardized by an 11 foot center section with wing combinations of three foot and six foot and bolt-on extensions of one foot, two foot, and three foot available. The hydraulically operated folding-wing models transport at 14 foot. for over-the-road safety and convenience. one-coil floating harrows mount on all models. Adjustable gauge wheels on all models assure proper depth control and good flotation in all types of terrain.

COMPLETE FARM PAINTING



We Use Quality PAINT

AERIAL LADDER EQUIPMENT

- Modern and Efficient Method
- Reasonable Prices.
- Spray On and Brush In Method
- Sandblasting if Necessary

FOR FREE ESTIMATES

ESH SPRAY PAINTING

(Daniel S. Esh - C. Ralph Miller)

SPRAY-ON AND BRUSH-IN PAINTER
Box 350A
Ronks, PA 17572

INDUSTRIAL
COMMERCIAL
RESIDENTIAL

More than 36,000 American communities now depend entirely on trucks for delivery of goods and services.

ATTENTION POULTRYMEN

▶▶ Cub 154 International Lo-Boy Tractor with Hyd. Frt. Blade ◀◀

- Very Good Condition - Ideal for Chicken House

KELLER BROS. TRACTOR CO.

949-6501

Buffalo Springs

949-6501