

# County steeped in history and beauty

sometimes called "green stone." Serpentine is found in deposits throughout the world, and in some slavic countries it is considered a sort of jade.

Serpentine varies from dark to light green or mottled with red, yellow, or white, like a serpent's skin, from which the name originates.

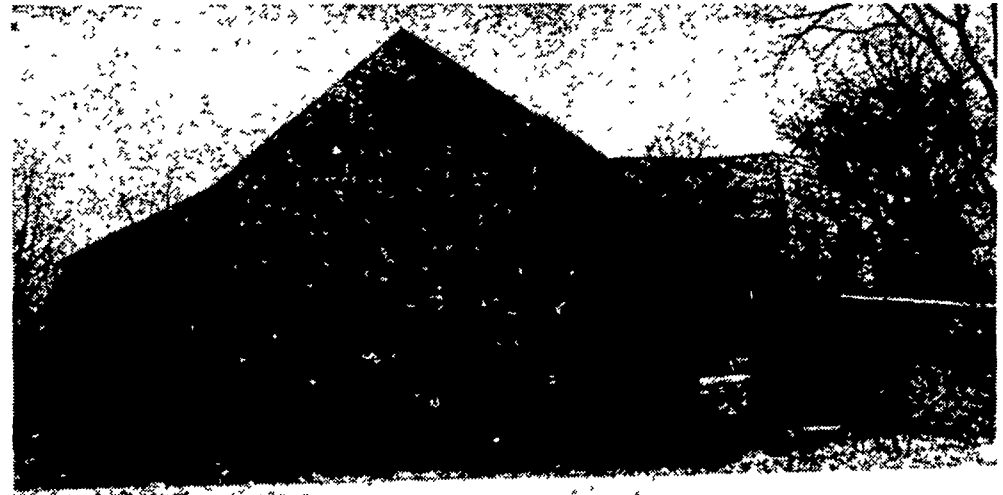
Quarries for this stone were discovered north and south of West Chester and near Unionville, and the farms built within five miles of these quarries were the ones fortunate enough to be able to utilize the material. It was too heavy for a team of horses to pull much further than that.

In a few rare instances, the barns were made of brick, but on the most part were made of stone. Brick barns are located mostly in the West Grove area.

According to local historians, double deckers were built from before the Civil War to the early 1920's when Jamesway barns were erected. The oldest datestone yet located was a 1796 marker, although other double deckers may be older but minus the datestone. From all evidence, datestones on barns weren't added until around the 1800's while many homes in the area carry markers from 1710 and 1720.

One other point of interest, is that local historians believe the barns were built by Quakers, since they are all within driving distance of Quaker meeting houses.

(The second in this series on Chester County barns will be published on April 30.)



A side view of the stone barn in Malvern shows the typical entranceway from the outside. It was almost always on the side opposite

the barnyard. The barn is a double-decker if there is a ramp leading to the top floor with a breezeway underneath.



Adding grace and beauty to the stone barns are archways separating the barnyard areas and also acting as portals. This picture was taken from under the forebay. Note the loose straw between the hand-hewn logs of the straw shed floor.

## Chester Co. 4-H members head to Capitol

WEST CHESTER, Pa. - Two Chester County 4-H members have been selected to participate in State 4-H Capitol Days in Harrisburg on April 18.

While in Harrisburg, they will receive a guided tour of the State Capitol Building, visit their local legislators' offices, and participate in

educational workshops geared to increase their understanding of the legislative process.

The 4-H members also will visit one of the following Commonwealth departments or agencies: Community Affairs, Environmental Resources, Agriculture, Education,

PennDOT Revenue, Justice, Public Utilities Commission, and Health.

Local lawmakers will be guests of the county delegation at a special breakfast on April 19. At this function, 4-H members and legislators will discuss local issues and define the purposes of the 4-H program.

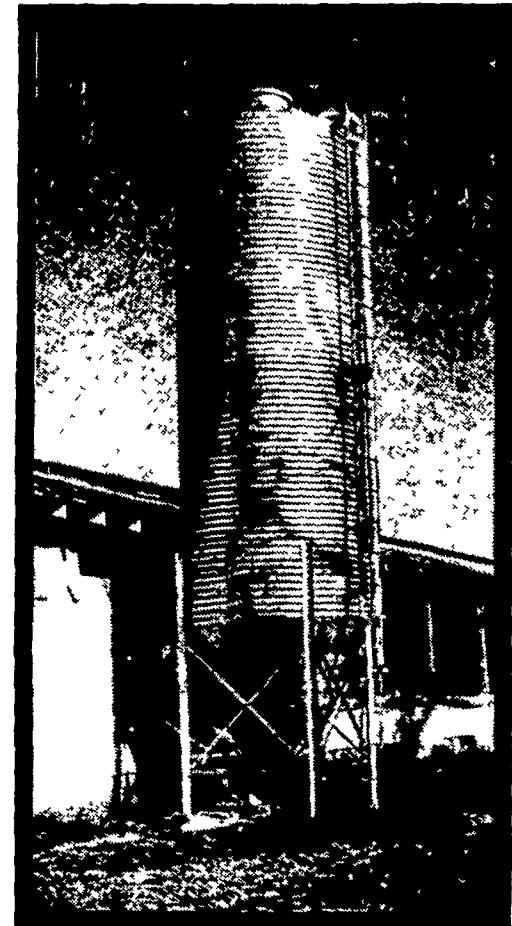
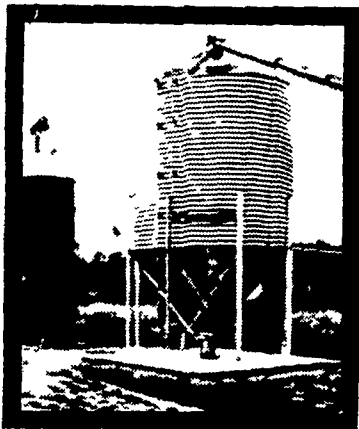
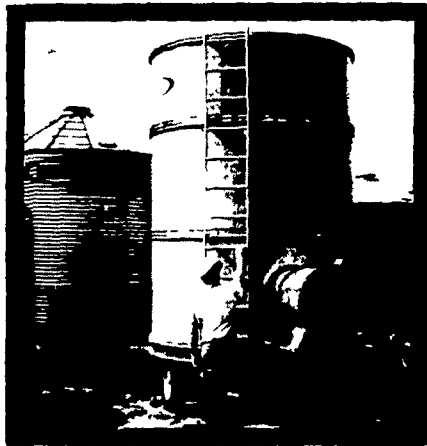
R  
DER

## SPRING SPECIAL



GRAIN DRYER

BINS



LET YOUR AGRI-BUILDER HELP YOU DESIGN YOUR SYSTEM!

ing before you  
ed building by

ifference  
d building and

E.

RY.

### OWNER WHO'S IN BUSINESS TO STAY

'S FARM  
VICE  
D. #1  
Pa. 17889  
7-837-3201

GLENN M. STAHLMAN  
R.R. #1, Cash Valley Road  
Cumberland, Md. 21502  
Phone 301-777-0582

TAM AGRI  
CORPORATION  
R.D. #1, Mountain Road  
Dillsburg, Pa. 17019  
Phone 717-432-3376

TEMCO PARTS CO. INC.  
Route 213 and 544  
Chestertown, Md 21620  
Phone 301-778-4454

C.H. WALTZ SONS INC.  
Cogan Station, Pa. 17728  
Phone 717-435-2921

ITH, INC.  
Pa. 171  
7-436-2131

SUNNY MEAD SALES  
R.D. #3, Box 409  
Ahtona, Pa. 16601  
Phone 814-944-6045

TAP ENTERPRISES INC.  
R.D. #3, Box 256A  
Fleetwood, Pa. 19522

TRI-STATE MARINE  
DIST. INC.  
Route 256  
Deale, Md. 20751  
Phone 301-867-1447

MARK ANTHONY  
& SONS  
R.D. #1  
Rochester Mills, Pa. 15771  
Phone 412-286-9250

### SEE YOUR LOCAL AGRI-BUILDER

P. E. Hess, Butler Mfg. Co.



Box 337, Oxford, PA 19363

I'm interested in more information on Butler products.

Buildings  Bins  Dryers  Bulk-O-Matics

Name \_\_\_\_\_

Address \_\_\_\_\_

County \_\_\_\_\_ Zip \_\_\_\_\_

City \_\_\_\_\_ State \_\_\_\_\_

Phone \_\_\_\_\_

[Include area code]

LF