

# Holstein breeders tour top farms in Virginia

By JOYCE BUPP  
York Co. Reporter

LOUDON COUNTY, Va. - Under leaden skies and pouring rain, a busload of York County Holstein breeders headed for northern Virginia on April 5 for their annual bus tour.

Harvue Farm, owned by Jack Hardesty and sons, near Berryville, Va. was the first stop. The Hardesty family milks 220 cows, currently maintaining a herd average of over 16,000 pounds of milk and 608 of fat.

"We have a low-investment operation here," stressed Hardesty, who worked his herd up from one calf. Milking is done in a double-eight herringbone parlor and cows are fed with a loader scooping from a 4000-ton capacity trench silo. Even the old stanchion dairy barn has a unique purpose in the operation. The top 20 cows are confined there each afternoon and press-fed for higher production. Five head were milking over 100 pounds daily, with several more just under that mark, on tour day.

"Separating the cows daily keeps us familiar with the animals," believes Hardesty, whose two sons are key men in the feeding and management areas.

Every cow, but two in the herd, is home bred and raised. Most trace their pedigrees back to the Oregon Challenger Baron sire. A number of large, heavily-milking Paclamar Astronaut daughters are in the herd, as well as one Round Oak Rag Apple Elevation progeny.

Near the trench silo a pile of bags lay stacked. They contained peanut shells, a prime Virginia bedding commodity. Bedding with the peanut by-product was new to the tour members, but three of the four farms visited were found using them regularly. Because of nationwide fiber shortage, many farmers have begun using them in feed blends, causing the price to skyrocket.

Next farm visited was the

home of E. B. Lee and Sons, at White Post. Lee greeted his guests on the lawn of his plantation-style farm home, then led them to the original milking barn where the best animals were tied for viewing. A new milking parlor and free stall barn for the 200 cows has been added recently to the facilities.

"We freshen our heifers at nearer three than two years of age because of their having to compete in the parlor milking arrangement," Lee explained. Several of the top breeding animals in the herd shown by Lee to the visitors came from Pennsylvania farms.

Lee noted that one crop of growing importance in the area is fescue. Forty acres of the legume wintered 75 of the farm's dry cows, with only four pounds of supplement per head daily.

The home of the popular Round Oak Rag Apple Elevation bull at Purcellville was the third stop. Round Oak farm is owned by John Hope, who has just modernized the milking operation with the construction of a double-six parlor. The main attraction in the long tie-stall barn was the line-up of homebred Elevation daughters, some of the oldest milking animals anywhere, sired by the bull. Also housed at the Hope farm is the famous Harborcrest Mary Hoe cow, 13-year-old maternal sister to all-time great brood cow Harborcrest Rose Milly.

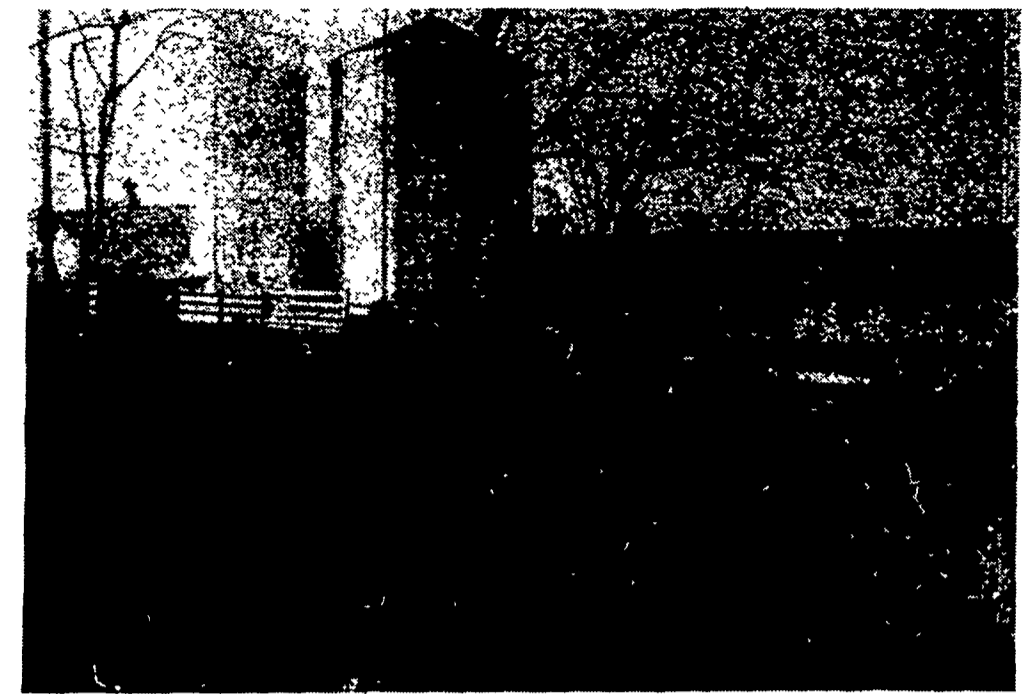
The York countians were also shown Round Oak's two young sons of Elevation, both being sampled by Virginia breeders.

A large lake, with a guest house on the island in the center, elegantly greets visitors to Foxlease Farms at Upperville, the final herd visit. Owner is Mr. Sinclair, vice-president of the Standard Oil company.

Ted Haberland, a German refugee, manages the farm and Holstein breeding herd for Foxlease. Total acreage in the cropping program is 1200, with 800 acres of that owned. Feed for the 100-plus milking animals housed in the long stanchion barn is raised on 400 acres of corn and 200 of hay. Large rolling pastures surround the farm buildings and provide fresh forage for the animals.

There are a number of No-Na-Me Pond Matt milking animals in the herd, as well as several Elevation heifers.

E. B. Lee, who guided the busload of visitors on their Virginia tour, treated them to a surprise drive



Ted Haberland briefs visitors on the breeding and management aspects of Foxlease farms. Haberland left behind a large farm when he fled

Germany many years ago. Several of the Foxlease animals have been exported to the "old country" as he terms it; and he visits there yearly.

around Carter Hall mansion, a huge colonial home set on the rolling Virginia hills. Surrounded with towering old trees and blossoming daffodils, the home has been featured in a Walt Disney movie and on nationally-distributed Carter Hall pipe tobacco packets.

## OUR OWN ANNUAL FARM FEEDER STEER & HEIFER SALE

SATURDAY, APRIL 30, 1977

At 1:00 P.M.

At our Troxelville Farm.  
OFFERING 80 HEAD

About 50 percent Steer Calves

All Steers castrated.  
All Cattle polled or dehorned.  
All bred & raised on our farm.  
All sired by French bred Charolais bull.  
Excellent recorded Charolais heifers. Health charts with heifers.  
Club calf quality steers.

Write or Phone for Brochure:

Dan Baker - Auctioneer

BROOKS END & PAR KAY FARMS

RENO H. THOMAS

PARK F. THOMAS

MARK L. STEHR

Reno H. Thomas, Sales Manager

Beavertown, PA 17813

PH: 717-658-5821, 7007 or 6544

Lunch available by  
UCC Church Women

## PIGS

STATE GRADED  
SALE

FRI., APRIL 22

1:30 P.M.

AT  
WESTMINSTER

LIVESTOCK AUCTION  
Westminster, Md.  
Phone (301) 848-9820

## PUBLIC SALE

The undersigned will offer at public sale located at Port Treverton RD 1 (turn east from Route 104 at Meiserville and north 1/2 mile at sale sign.)

SATURDAY, APRIL 23, 1977

Beginning at 12:00 Noon  
125 HEAD FEEDER STEERS

Varying in weight from 300 to 800 lbs. All are dehorned and fully acclimated since calfhood. A broad selection of Hereford, Charolais, Angus, Holstein and a variety of crosses.

7 GOOD HEREFORD FEEDER HEIFERS  
AND 2 ANGUS BULLS

PIGS

Several brood sows due to farrow on or about sale time and about 75 head good feeder pigs. 1 Yorkshire Boar and 5 Yorkshire gilts.

Terms: Cash.

Owner,  
ROY MARTIN

L. S. Klingler, Auctioneer

## PUBLIC SALE

SATURDAY, APRIL 23, 1977

1:30 P.M.

Location from Mt. Airy to Girl Scout Camp, about 4 miles north of Route 322 in West Cocalico Township, Lancaster County, Pennsylvania.

3 TRACTS OF WOODLAND

TRACT #1 - 3 Acres more or less with Spring, never dry; Heavy Timber along Netzley Road.

TRACT #2 - 12 Acres more or less along Netzley Road.

TRACT #3 - 3 1/2 Acres more or less along Girl Scout Road.

These 3 Tracts join each other.

These tracts are in a good location if you are looking for woodland.

Sale to be held at Tract #3.

Anyone wishing to view these tracts call in the evening, 733-6618.

Sale at 1:30 P.M.

Terms by,  
RAYMOND & LUTHER EDWARDS

Frank and Paul Snyder, Auctioneers.

859-2688 or 733-7052

Shirk, Reist & Buckwalter, Attorneys

## PUBLIC AUCTION

SATURDAY, APRIL 30, 1977

At 11:00 A.M.

At the former Ray Kiefer Farm on Maple Street in Hegins, Pa. (behind Kiefer's Mill)  
FARM EQUIPMENT

Farmall H tractor, M.-M.-R tractor with cultivator, Oliver 13 disk grain drill, good condition; (2) farm wagons on rubber, Oliver No. 5 cornpicker, Oliver 2-row planter, NI 7' mower Brillion 5' rotary cutter, Hardie 200 gal. orchard sprayer with fan, Wisconsin motor & wooden tank, tractor disk, Oliver 4-wheel manure spreader, good condition; Champion single-row potato digger, side-delivery rake, lime drill, 24' bale elevator, PTO seeder, potato grader, cement mixer, small farm trailer, Swab wagon running gear, horse plow & cultivators, wagon seat, apple boxes & fruit baskets, orchard ladders, (2) air pruning guns and other pruning equipment, egg washer, grader & baskets, chicken brooders, feeders and nests, brooder houses, range shelters, 12' metal corn cribs, 5' fencing, snowfence, butcher kettles, wagon jack, rope block, single and double trees, hay hook, sprayer boom, huckster scale, harness, wooden wheelbarrow, water pump with motor, barrels, exhaust & circulating fans, cast iron troughs coal chute, chest-type freezer, pipes, many other items not listed.

Frame bank-type barn approximately 35' x 70' with good timber and aluminum roof. (this barn must be removed by purchaser.)

1950 Chevrolet V-Tag truck. 2-speed Transmission Van-type body. 1946 Chevrolet U-Tag truck. 10:00 x 20 tires and rims.

Sale ordered by,  
PINE CREEK INVESTORS, INC.

Lunch Available.

George N. Deibert, Auctioneer  
(717) 425-3313