

Swine research recommended

WASHINGTON, D.C. - A request for \$2,000,000 in swine research funds and a national PRV (pseudorabies) control program was presented to members of Congress last month by the National Pork Producers Council Board of Directors.

Directors meeting here for their quarterly board meeting visited with members of Congress and USDA officials and asked for their support for supplementary funds to be added to USDA's 1978 fiscal budget which begins October 1, 1977.

The supplementary funds were requested for PRV research and control, TGE (transmissible gastroenteritis) research, pork nutritional research and residue monitoring studies. If the Senate House Appropriations Conference Committee agrees on the matter, the funds will be made available immediately.

In addition, the

Agricultural Research Service (ARS) has granted \$60,000 for PRV research from its emergency contingency funds. The funds were granted one day after ARS officials met with the NPPC's board.

NPPC directors also urged their representatives to support on-going USDA swine research projects. They called for an inquiry into the Internal Revenue Service's position on investment credit for certain specific pork production units.

The National PRV control program presented to Congress was the eight-step plan adopted by NPPC delegates at the recent

American Pork Congress. The plan would: immediately activate in-depth research on skin testing and all other testing and diagnostic procedures necessary for control of PRV.

permit interstate shipment of feeder pigs only from those states where PRV is a reportable and quarantinable disease.

permit interstate movement of only those hogs going direct to slaughter or a slaughter market, or that have tested negative for pseudorabies within the previous 30 days.

design one standard uniform test and reporting procedure for PRV.

allow an anti-serum be produced and approved for interstate movement that will aid in reducing pig death loss in catastrophic outbreaks.

establish an accurate cost-risk-benefit ratio pertaining to the use of vaccines and their effect upon the future control of this disease.

develop a total program of positive actions to control the spread and to bring about the eventual eradication of PRV while protecting the economic rights and stability

of the individual pork producers and the future of the nation's pork industry. cause the USDA budget for fiscal year 1978 to be amended to add supplementary budget items to underwrite those costs of implementing the programs for the control of PRV.

4-H Club reorganizes

NEW HOLLAND - The New Holland Community 4-H Club will hold its reorganizational meeting on April 11 at 7:30 p.m. at the home of Mr. and Mrs. William Fisher, East Earl R2. All interested boys and girls between the ages of 9-19 are invited to attend. Parents are welcome also.

For more information call Mrs. Woodrow Good, 717-354-8706, or Mrs. William Fisher, 717-354-7540.

TRY A CLASSIFIED AD!

WE CAN SAVE YOU TIME AND MONEY!

INSULATE NOW

Insulate any open 24' x 30' ceiling with 6" of blown mineral wool . . .

\$172.80

Now is the time to insulate!

100% Bank Financing



CALL ANYTIME OUT-OF-TOWN CALL COLLECT

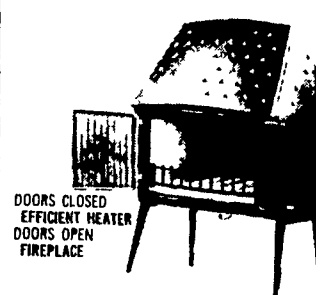


291-9210

FUEL SAVERS-LANC.

Box 9/4, Lancaster, Pa. 17604
See our display at Roof's Auction.

A UNIQUE STOVE and FIREPLACE combination



The Efficient Way To Wood Heat Is With The **MORSØ STOVES**

Franklin stoves and fireplaces allow most of the heat to escape up the flue including volumes of warm air from your home. However, with the Norwegian & Danish light design and unique baffle system, stoves burn highly efficiently. Keeps 75 percent of heat generated right in your home. Burns 8 to 18 hours on one load (depending on size). Mornings are warm. One fire lasts all winter.

- Heats 10,000 Cu Ft Home (24 ft x 45 ft area)
- Burns 16 to 18 Hours Each Loading
- Enamel Finish Black or Green
- All Cast Iron With Brick Lining

SEE THIS STOVE HEAT MY 10 ROOM (17,000 CU FT) HOME

SEND \$1.00 FOR NEW MORSØ WOOD HEAT HANDBOOK!

WOOD HEAT

Rt. 212 Pleasant Valley Quakertown, PA. 18951

Daily 9 to 9 Call 215-346-7894

FRIDAY & SATURDAY AT ZERNS MARKET, GILBERTSVILLE Sat. 11 to 11

STOVE SIZES FOR 1 TO 10 ROOMS

20 Models in Stock including MORSØ & JETUL

ALL STAINLESS STEEL CHIMNEY PIPE & ACCESSORIES

SUTAN - LASSO ATRAZINE

Apply Sutan Atrazine 18-6-G, with our Gandy disk-mounted granular applicator.

Spray Sutan, Lasso & Atrazine or liquid nitrogen with our sprayer.

Furadan and Dyfonate for root worm control.

Butyrac 118 for weeds in Alfalfa.

JONAS S. EBERSOL

1 1/2 miles North of Bird-in-Hand on Stumptown Rd.

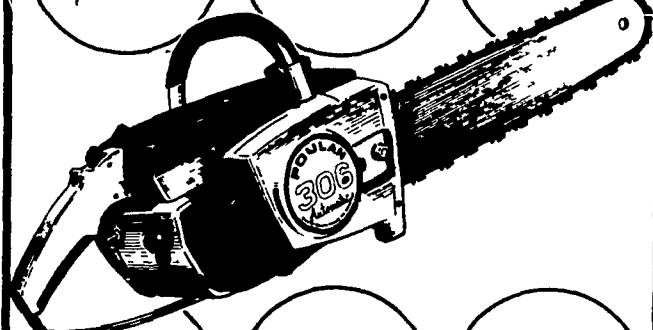
Poulan Chain Saws

306 Automatic

3.6 cubic inch engine

Automatic and manual chain oiling

100% bearing construction



Quiet-tone spark arresting muffler

All-position carburetor. Saw cuts in any position

Push-Button throttle-lock for easier starting

ADAMS CO.
REEDY BROS. COMPANY
RD 4 Gettysburg, Pa.
717-334-3710

CUMBERLAND CO.
WEBER'S HARDWARE
100 W. Main St.
Mechanicsburg, Pa
717-766-3451

CHESTER CO.
M. S. YEARSLEY & SONS
West Chester, Penna.
215-696-2990

LANCASTER CO.
ANDREW BEILER
196 Eastbrook Rd
Smoketown, Pa.

C. H. LAUSCH
Ephrata, Pa.
717-733-3749

LAWN CARE OF PENNA.
Martindale, Pa
215-445-6650

LONG'S MOWER SERVICE & SALES
Lititz, Pa
717-626-8180

NISSLEY'S FARM SERVICE
Washington Boro, Pa.
717-285-4844

OBERTHOLTZER'S
Lititz, Pa.
717-733-8506

AMOS STOLTZFUS
Box 67 Hensel Road
Kinzers

R. P. WILLIAMS & SONS, INC.
Columbia, Pa.
717-684-2019

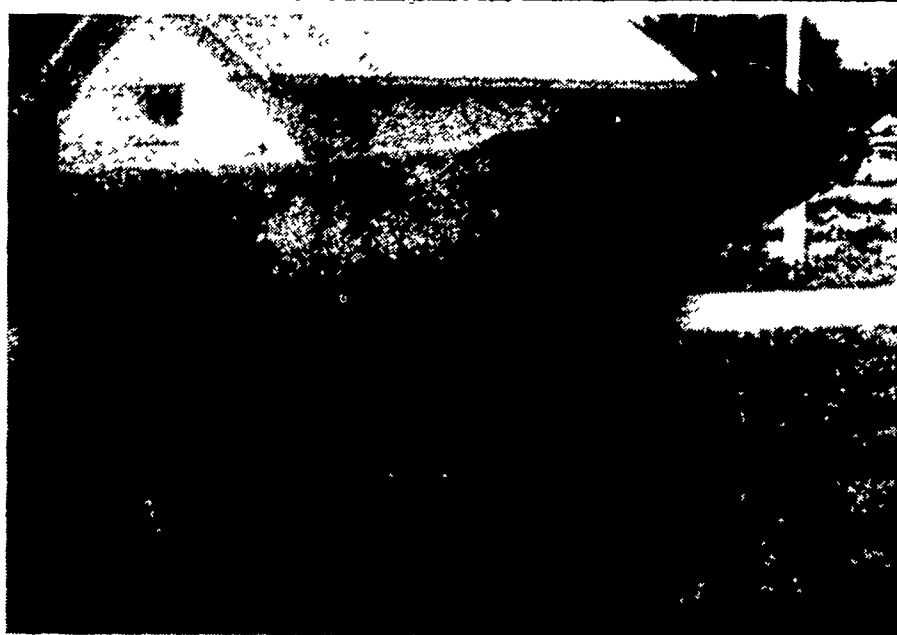
LEBANON CO.
NEUJIN'S SALES & SERVICE
333 W. Market St.
Jonestown, Pa.
717-865-3487

PAT & SON
Jonestown, Pa
717-867-2998

YORK CO.
MAUSS SHARPENING SERVICE
524 N. Pershing Ave.
York, Penna.
717-843-1716

STRICKLERS HOME & GARDEN
Red Lion, Pa.
717-244-8187

Start With Quality Sires:



1J183 Blanton Tristram Generator

Very Good
\$6 per service

Mate-Rite Strengths:
dairyness with strength
very good udders
teats have correct shape and placement
rumps are long and wide
legs & feet are correct

USDA [1/77]-23 Daughters in 5 Herds Average
Predicted Difference [34% rpt.]
AJCC Type: 21 Classified Daughters Average 84.1
Sire: Milestone's Generator-VG
Dam: Mermaid Tristram Sarah-VG

12,437M 4.71% 586F
+578M +\$55 +20F

Tris Gen - and more Profit-Makers - are available daily from all our Professional Technicians.



Atlantic

LIVESTOCK BREEDERS COOPERATIVE SERVICES

Member - NAL Affiliated Breeders

24-Hour Toll-Free Phone Nos. for Service:
Pennsylvania 800-732-0391

Lancaster 569-0411

Del. & Md. 800-233-0216