

**We're
concerned
where you're
concerned**

**FOR BETTER PROTECTION
KEEP YOUR EGGS
TOGETHER**



SERVICE FROM SHENK'S IS TOPS



**WE NOW OFFER ROUTE
SERVICE FOR
DAIRY SUPPLIES**

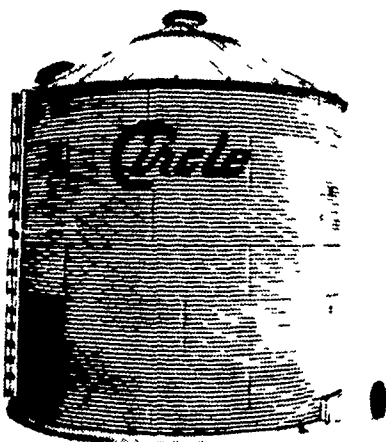
FOR ADDITIONAL INFORMATION.
CALL 717-626-1151

GRAIN DRYING EQUIPMENT



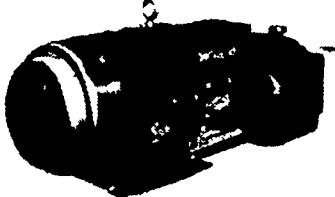
GT Batch Recirculating
SUPER B AUTOMATED

Make Plans Now
for Next Seasons
Grain-Handling Equipment
Bins - Augers - Dryers, etc.



Circle Grain Bins Feed Bins

Got Prepared With Standby Power



**WECO
GENERATORS**

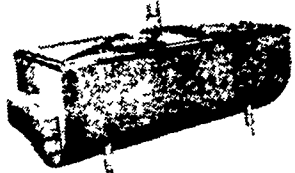
PTO - Sizes 15 KW to 65 KW
Portable Units 1000 Watts to 7300 Watts
Stationary Units 25 KW to 100 KW

USED MILK TANKS

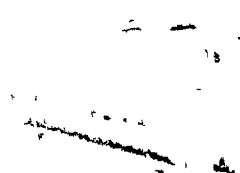
- 1 - 1000 Gal. Girton
- 1 - 600 Gal. Mojonmer
- 1 - 600 Gal. Steinhorst
- 1 - D2 - 500 Gal. Girton SOLD
- 1 - 400 Gal. Mojonmer
- 1 - D2 - 400 Gal. Girton
- 1 - D2 - 300 Gal. Girton
- 1 - 500 Gal. Jamesway

Above Tanks in nice clean condition

Several Used 4-Can Can Coolers
To install with milk tanks
Use as refrigeration for most anything



MILKKEEPER
500 Gal., 600 Gal.
In Stock Ready For
Immediate Installation



MODEL DKE
400 Gal. thru 5000 Gal.
Capacity

- 1 - Used 20 ft. Jamesway silo unloader, late model
- 1 - Used Shuttle Zimm-A-Matic barn cleaner

SALES—INSTALLATION—SERVICE

SHENK'S FARM SERVICE

501 E. Woods Drive Lititz, PA 17543 Phone 717-626-1151

New Tripoli Area - Phone (215) 767-7611

Quakertown Area - Phone (215) 536-1935

Bulk tanks
& Therma - Stor

After 5 P.M. Call Titus Burkholder 717-859-1620

Our Service Trucks Are Radio Dispatched

24 HR. SERVICE
OFFERED

**Energy, food
system discussed**

HARRISBURG, Pa. - The Pennsylvania Department of Agriculture hosted several high priority representatives of Pennsylvania agribusiness, the P.A. Department of Commerce, and university research and Extension personnel at several meetings held recently in Harrisburg to examine the energy problem and the future of the food system in the Commonwealth.

According to Agriculture Secretary Kent D. Shelhamer, the issues discussed were: food system energy use, short run price and supply outlook for electricity and petroleum products, plus the impact on consumer food prices, employment and how agribusiness firms might reduce their vulnerability to rising energy prices and supply shortages in the future.

A food System Energy Task Force, under the chairmanship of James Adams, Jr., Dauphin

Distribution Services, Inc., Camp Hill recommended several high priority measures for food processors, wholesalers, retailers, and service agencies in the state. Shelhamer said the recommendations called for the establishment of an energy management team in each business to seek better ways to utilize energy within their organization. A training program for that group was also stressed.

The task force urged firms to develop immediate plans to deal with future possible energy shortages of fuels and electricity and that an energy inventory for the food processing and distribution industries be developed to point up the interdependency of the various components of the food sector.

Other members of the task force are: James Oyler, George Wolff, Jack McNellis, Albert Vicks, and Donald Parke.

Know Where the Activities Will Be?
Read the Farm Women Calendar.



LAND PUZZLE...What is it? Scene appears to be aerial view of unique irrigation project. Actually, it is a basin near Tuzigoot National Monument in Arizona, terraced to catch run-off from nearby mines. Area is rich in copper, gold and silver and highly acid run-off must be contained.

Mr. Farmer:

IF YOU'RE
LOOKING FOR
A GOOD USED
TRACTOR TO
SEE YOU
THROUGH
YOUR BUSY SPRING,



Check this list:

- Stock # 3057 - Ford - 4000 Row Crop (gas)
- 3194 - Ford - 6000 Row Crop (diesel)
- 3263 - Ford - 5000 All Purpose (diesel)
- 3265 - Ford - 4000 S.U. (gas)
- 3283 - Ford - 801 All Purpose (gas)
- 3308 - Ford - 5000 All Purpose (late model diesel)
- 3369 - Ford - 900 Row Crop (gas)

SPECIAL THIS MONTH

Ford 501 Mowers - Clearance Sale

Picked up here - dealer cost

Lancaster Ford wants to be your tractor company



**LANCASTER FORD
TRACTOR, INC.**

Take Flory Mill Exit off 283 and go
mile toward East Petersburg

The New Home Of The Friendly People

1655 Rohrerstown Road