

Livestock market and auction news

Lebanon Valley Auction

FREDERICKSBURG, Pa.

April 5, 1977

CATTLE 298. Compared with last Tuesday's market, slaughter steers grading Good & Choice steady. Slaughter cows uneven, Utility 75 cents to \$1 lower, Canner & Cutter 50 cents to 75 cents higher. Slaughter bulls steady to 75 cents lower. Choice No. 2-4 1000-1200 lbs. slaughter steers 37.00-38.35, one at 38.50, Good 34.10-37.00, few Standard 30.00-33.50. High Choice slaughter heifers 36.75-37.85, Choice 35.00-36.50, Good 33.10-34.00, few Standard 29.00-32.10. Utility & High Dressing Cutter slaughter cows 27.75-30.50, one at 30.50, cutters 27.60-29.00, Canners 28.00-27.50, few shells down to 24.85. Few good slaughter bullocks 32.85-34.25, few Standard 31.50-33.25, few Utility 29.50-31.50. Yield Grade No. 1 1100-2350 lbs. slaughter bulls 32.75-37.10.

CALVES 148. Vealers grading Good & Choice

steady to \$4 higher Standard & Good 70-110 lbs. steady to \$1.50 lower. One Prime vealer at 71.00, Choice 55.00-69.00, Good 39.00-54.00, few Standard & Good 110-130 lbs. 35.00-42.00, 90-110 lbs. 26.50-30.00, Standard 70-85 lbs. 21.00-27.50, few Utility 50-65 lbs. 10.00-21.00. Farm calves, holstein bulls 100-110 lbs. 36.00-47.50.

HOGS 349. Barrows & Gilts 50 cents lower. US No. 1-2 200-220 lbs. barrows & gilts 36.10-36.70, one lot 37.00, No. 1-3 200-240 lbs. 35.50-36.10, No. 2-3 240-260 lbs. 34.10-35.35. US No. 1-3 350-500 lbs. sows 28.00-30.75. One Boar at 20.50.

FEEDER PIGS 18. Not enough of any one grade to establish a market.

SHEEP 265. Bulk of supply to the Easter trade. Choice 25-40 lbs. spring slaughter lambs 71.00-104.00, 50-80 lbs. 59.00-71.00, Good 15-30 lbs. 60.00-90.00. Slaughter ewes 6.00-14.00.

Middleburg Auction

MIDDLEBURG, Pa.

April 5, 1977

CATTLE 276. Compared with last Tuesday's market; Choice 110-1300 lbs. slaughter steers 37.25-38.75, Good 35.00-37.35, Standard 33.75-35.00, Utility 29.50-33.75. Choice slaughter heifers 34.00-36.60, Good 30.00-34.00, Standard 28.00-30.00, Utility 25.00-28.50. Utility & High Dressing Cutter slaughter cows 26.00-30.85, Cutters 26.00-28.75,

Canners 24.00-26.00, Shells down to 22.00. Good slaughter bullocks 35.50-38.50. Yield Grade number 1 1200-2445 lbs. slaughter bulls 32.85-37.10; yield grade No. 2 800-1200 lbs. 28.00-33.00. Medium & Good 350-700 lbs. feeder steers 32.50-42.75.

CALVES 188. Prime vealers 70.00-75.00, choice 62.00-70.00, Good 55.00-62.00, Standard & Good 110-130 lbs. 32.00-52.00, 90-110 lbs. 25.00-

Oklahoma Cattle

April 7, 1977

Estimated receipts 7,800 Same day last week 4,666 Active, feeder cattle and calves generally steady: Majority receipts choice 350-850 lb feeder steers and 350-750 lb feeder heifers. Moderate attendance buyers.

FEEDER STEERS: Choice 300-500 lb. 45.00-50.00; 509-600 lb. 41.25-46.50; one small lot and near 3 loads 533-536 lb 46.90: 600-700 lb. 39.50-43.25: Part load 620 lb. at 44.25; 700-800 lb. 38.75-40.25; 800-1075 lb 36.25-39.25; Mixed Good and Choice 500-790 lb. 38.00-41.25; Part load this 436 lb. at 44.80; few good 700-800 lb 34.00-39.00.

32.00, standard 70-85 lbs. 20.00-25.00. Farm calves, holstein bulls 95-115 lbs. 32.00-42.00.

HOGS 511. US No. 1-2 200-225 lbs. barrows & gilts 36.25-37.70, No. 1-3 190-250 lbs. 35.00-36.25, No. 2-3 250-300 lbs. 33.75-35.00, few No. 1-3 150-185 lbs. 30.00-34.00. US No. 1-3 300-600 lbs. sows 26.00-33.50. Boars 200-650 lbs. 20.50-25.25.

FEEDER PIGS 245. US No. 1-3 10-20 lbs. feeder pigs 12.00-20.00 per head, No. 1-3 20-40 lbs. 20.00-35.00, No. 1-3 40-60 lbs. 30.00-42.00, No. 1-3 60-100 lbs. 42.00-72.50 per head.

SHEEP 45. Choice 20-40 lbs. spring slaughter lambs 70.00-91.00, Good 40-60 lbs. 50.00-65.00, Utility 60-100 lbs. 40.00-55.00. Slaughter ewes 12.00-21.00

FEEDER HEIFERS: Choice 300-500 lb. 33.75-37.50; two part loads 316.378 lb at 38.00; 500-700 lb 34.00-35.50; part load 529 lb. at 36.20; few 700-8.00-34.25; few mixed good and choice 500-620 lb. 33.00-34.25; part load good 460 lb at 32.30.

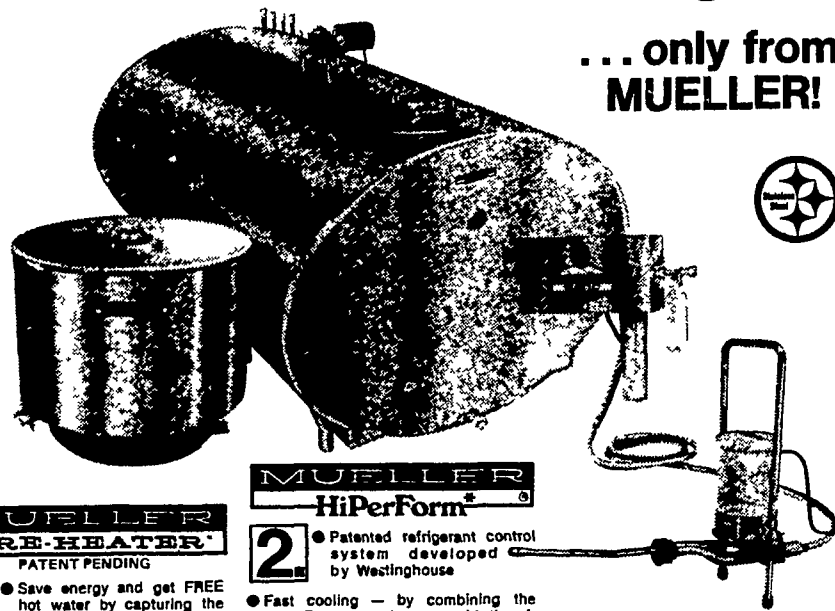
for the week; Compared to late last week, feeder cattle and calves closed firm to

50 cents higher, instances 1.00 higher; slaughter cows closed 75 cents to 1.50 lower, bulls closed steady: Salable receipts near 16,600 head compared to 12,042 head last week and 18,714 head the comparable week a year ago. Cows and Bulls totaled near 9 per cent of cattle receipts with feeder cattle and calves comprising 88 per cent of the total.



1. Free Hot Water
2. HiPerForm Cooling
3. Mueller-Matic Washing

... only from
MUELLER!



MUELLER
FRE-HEATER
PATENT PENDING



Save energy and get FREE hot water by capturing the heat you're wasting when cooling milk!

In the Fre-Heater the refrigerant is routed to a specially designed condenser/heat exchanger and its heat is transferred to the water.

A thermostatically controlled valve delivers 140° F water to the storage tank. A mixing valve also delivers 'prepping' temperature water.

Tests indicate the Fre-Heater consumes 10% less power than an air-cooled system and you get Free hot water!

Eliminates the most common causes of slow cooling: cold weather starting problems and compressor fail ures because

- 1 There is no air-cooled condenser to become clogged or fans to fail or generate noise
- 2 The Fre-Heater is installed in doors
- 3 The head pressure is very stable assuring longer compressor life

A Fre-Heater operating on 60° F well water will produce a volume of 140° F water similar to the amount of milk produced during a milking

MUELLER
HiPerForm

Patented refrigerant control system developed by Westinghouse



Fast cooling — by combining the HiPerForm control system with the efficient Mueller Temp-Plate evaporator (cooling plate) Split evaporator and controls for dual condensing units

Gentle but thorough agitation aids cooling and an automatic interval timer assures uniform blend of temperature and butterfat

Service-free dependability and longer compressor life due to unique control system and factory-sealed, pre-charged refrigerant tubing

Wall-mounted control cabinet for both cooler and Mueller-Matic controls

Mueller Craftsmanship 100% stain less steel construction, lower, elliptical design, and large radius corners for easy cleaning

A refrigerant control system licensed under and covered by Westinghouse Patent 3,264,837 and perhaps others

MUELLER
MATIC

If you're still hand washing your cooler, your valuable time is "going down the drain" with the wash water

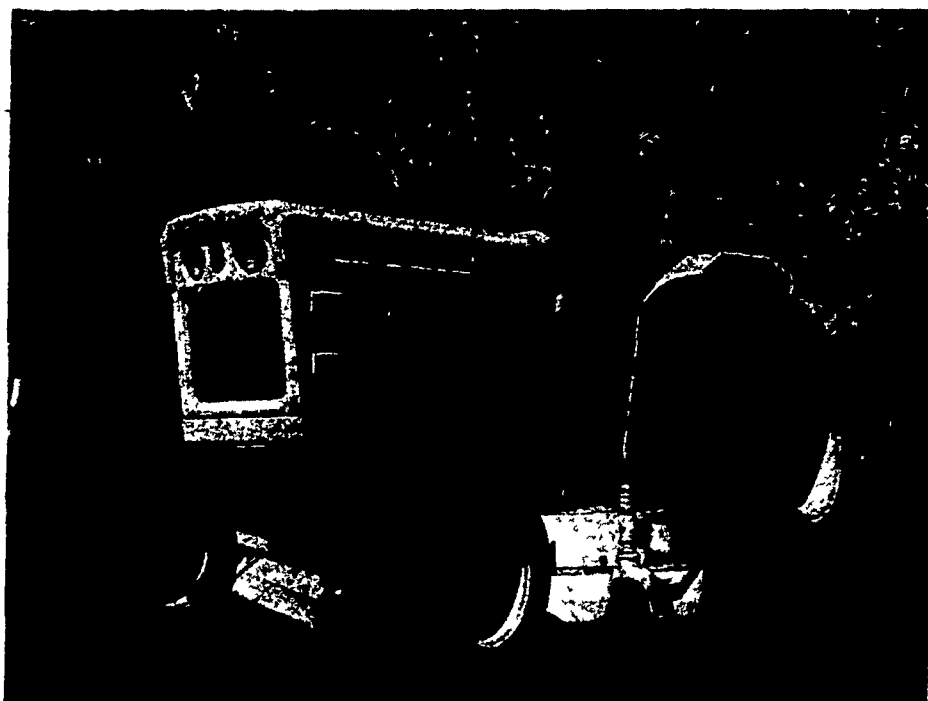
- Simple, 3-step operation
- 1 Insert the jet-tube
- 2 Fill detergent container and check acid level
- 3 Switch unit "on" for automatic operation

Daily use on thousands of dairy farms has proved that Mueller-Matic cleans the cooler consistently better than hand scrubbing

Mueller-Matic gives your cooler a hot water pre-rinse, hot-water and detergent wash, hot water rinse, and a cold water acid rinse—all automatically

Unique Mueller-Matic jet-tube spray action and precision-metered acid rinse sanitizes every inch of cooler interior. Milk stone build-up is eliminated and bacteria count is sharply reduced

FREE MOWER NOW with purchase of a new SATOH ELK



Take advantage of this great offer on a new 19½ HP Satoh Elk right now. Buy the Elk and get the 60-inch mid-mount mower free.

Or... buy a Satoh Elk and get a big \$800 discount on one of these three attachments: a 60-inch Master rear mower, a National loader, or a 48-inch Satoh tiller.

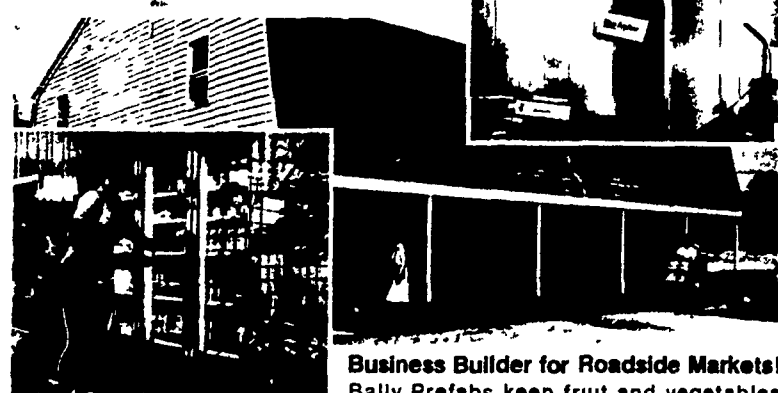
That's a lot of value and a lot of tractor for the money. Around the grounds, on the farm, or in the plant, the long-lasting Satoh tractor stands up to a lifetime of trouble-free service.

Ask your participating dealer about financing, and buy now. Offer expires May 14, 1977.

ABRACZINSKAS FARM EQUIPMENT
Catawissa, Pa.

WENGER IMPLEMENT, INC.
Quarryville, Pa.

BALLY PREFAB WALK-IN COOLERS



Business Builder for Roadside Markets!
Bally Prefabs keep fruit and vegetables "dewy" fresh With efficient refrigeration you can handle other products... keep loads of stock on hand... make more sales. Extra profits, and savings from spoilage elimination, quickly pay for a Bally Walk-In.

Assemble any size for indoor or outdoor use... for normal or low temperature Fast to erect. Easy to enlarge or relocate. Subject to investment tax credit and fast depreciation. (Ask your accountant) Write for free literature and urethane wall sample



RUFUS BRUBAKER REFRIGERATION

RD5, Manheim, PA 17545
PH: 717-665-3525

We've Been in Business Since 1946 & Selling Milk Tanks Since 1955.