

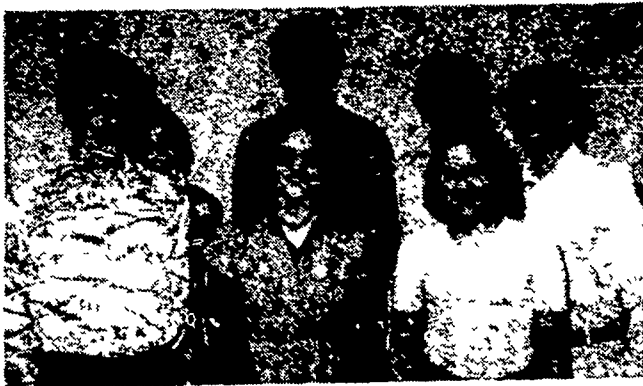
Food buying guide available to public

WASHINGTON, D.C. If you find it difficult to judge quality in the foods you buy, the U.S. Department of Agriculture has help for you.

The help comes in the form of a small publication, entitled, "How to Use USDA Grades in Buying Food." The recently revised and updated publication shows the official grade marks used on meat, eggs, poultry, dairy products, and fresh, canned, and frozen fruits and vegetables. It explains what the grades mean for each of these products and gives tips on how to use the various grades.

The booklet advises consumers that "...if you learn to recognize the grade mark when it is used and know what it means, it can help you to know more about what you are buying, to compare prices of foods in different stores, and to get the most for your money."

Single copies of Home and Garden Bulletin No. 196, "How to Use USDA Grades in Buying Food," (G-196) may be obtained by postcard request to the Office of Communication, U.S. Department of Agriculture, Washington, D.C. 20250. Please use your zipcode.



The newly elected officers of the Lancaster County 4-H Dairy Club are: (front row left to right) Larry Hershey, president; Joyce Stoltzfus, secretary; Jewel Hess, song and game leader; (back row left to right) Alice Stauffer, news reporter; Dennis Kulp, treasurer; Arlin Keener, vice president; and Doug Hershberger, song and game leader.

READ LANCASTER FARMING FOR FULL MARKET REPORTS

Food basket costs averaged

HARRISBURG, Pa. — Pennsylvania's average retail "food basket" cost for the month of March was \$10.26, according to the monthly food basket survey report released this week by Kent D. Shelhamer, Pennsylvania Secretary of Agriculture.

Shelhamer said the average retail cost of the food basket was based on a sampling of 14 food items, intended to provide consumers with retail food price information.

"Prices have been consistently on the rise over the past six months," Shelhamer noted, "but the increased food prices for our Pennsylvania consumers only reflect a steady climb in the average shopping bag cost which is nationwide in scope."

Of key importance to consumers, Shelhamer pointed out, "is our finding that the cost of selected storebrand items was seven

per cent below the cost of namebrand items."

According to the survey, prepared by the Department's Bureau of Rural Affairs, the average food basket price for March was highest in the northeastern part of the state at \$10.55. Lowest prices were recorded in the southeast central part of the state at \$10. All six regions of the Commonwealth reported prices averaging over \$10 for the 14 items.

The difference in cost of the food basket in rural and urban areas remained at about four per cent in March, showing that rural communities continue to take the brunt of inflation.

Items in the food basket which increased in price during March were coffee, from \$2.67 to \$2.87 a pound; fresh pears, from 39 to 40 cents a pound; canned corn, from 34 to 35 cents a pound; sugar, from 21 to 22 cents a pound; shortening, from 54

to 55 cents a pound; corn-flakes, from 59 to 61 cents a pound; chicken, from 55 to 57 cents a pound; and ground beef, from 95 to 96 cents a pound.

Items decreasing in price were potatoes, from 16 to 13 cents a pound; cabbage, from 41 to 38 cents a pound; eggs, from \$1.01 to 91 cents a dozen large eggs; and

American cheese, from \$1.61 to \$1.60 a pound.

Bread remains about the same at 38 cents a pound loaf.

PUBLIC SALE

OF 40 ACRE FARM, IMPLEMENTS, HOUSEHOLD GOODS ANTIQUES AND BUTCHER EQUIPMENT SATURDAY, APRIL 16, 1977

Along Blimeline Road leading from Mikes Diner at Route 222 to Knauers at 625 in Brecknock Township, Berks Co., Pa.

All that certain tract of land with aprox. 1800 feet of frontage and containing 40 acres more or less, with 2 acres wood land; with 2½ story frame shingled dwelling with 8 rooms and bath; elec. water and coal fired hot air heat; frame bank barn and wagon shed; block butcher shop and smoke house and other out buildings; this property is located next to a new development and is ripe for development; for inspection of buildings call 215-777-3157 for appointment.

Implements consist of 2 Allis Chalmers tractors; grass mower; hay loader; disc harrows; trailer plows; side rake; 2 wagons; corn planter; New Idea No. 18 manure spreader; wooden grain windmill. KRAUSE BROS: BUCKS CO: threshing machine; grain binder; lot of small barn items; scalding trough; meat fork; butcher spoons; hog scrapers; 2 iron kettles; meat grinders; lard presses; copper kettle and stirrer; sleigh bells; twin maple beds springs and mattresses; blanket chest; wooden kitchen cabinet; 6 legged drop leaf table; 2 piece pine corner cupboard; wash stand; round dining room table; dresser; trunk and loads of other items not listed.

Sale at 9:30 A.M.

Real Estate at 2 P.M.

Barn items and implements will be sold first. Gouglersville Grange Lunch Stand.

Terms by,

MRS. HELEN KESSLER

H. H. Leid Auction Service

PUBLIC AUCTION

DELAWARE STATE POLICE VEHICLES SATURDAY, APRIL 16, 1977

At 11:00 A.M.

(11) 1973 Ply. Fury 4 dr. Sedans; (28) 1974 Ply. Fury 4 dr. Sedans; (1) 1962 Cadillac Sedan; (1) 1972 Chev. 2 dr. HT; (1) 1969 Ford Mustang; (1) 1975 Utility Trailer. Public Service Commission - (1) 1971 AMC Matador Sedan.

Office State Fire Marshall - (1) 1972 AMC Amb. Sedan; (1) 1973 AMC Amb. Sedan.

SPECIAL MENTION: (1) 1970 Triumph Motorcycle, mileage 8,829.

Location: Delaware State Police Headquarters, Rt. 13 (North bound lane), Dover, DE (signs posted)

Inspection: Morning of sale from 9 A.M. 'til time of sale.

Terms: Cash or check approved by Auctioneer.

Sold by the,

Department of Administrative Services

Division of Purchasing

Auctioneer: Donald R. Fenimore

PUBLIC SALE

OF ANTIQUES, HOUSEHOLD GOODS, TOOLS, COINS & GUNS SATURDAY, APRIL 16, 1977

At 12:00

Located at 2200 Old Philadelphia Pike, East LAMPETER Twp. Lanc., Pa.

Unico upright freezer, Maytag auto. washer, Hotpoint 2 dr. refrig., GE elec. stove, walnut Sheraton chest of drawers, pine 4 leg dropleaf table, 6 orig. dec. plank bottom chairs, pie cupboard, plank bottom high chair, 6 plank bottom chairs, 2 blanket chests, cottage dresser, Lots of oak & other furniture. Copper, iron, tin, & wooden articles. Crocks & jugs. Elgin watches, German, Nippon, Noratake, blue willow, milk glass, pressed, depression & other glassware & china. Household articles. Rotary mower, lawn sweeper, shell well pump, wheelbarrel, skillsaw, Hand & Garden tools. Guns: 12 ga. single barrel shotgun. Coins: silver dollars & other coins. Guns & coins to be sold at 2:00. Other misc. articles not listed. Food Served.

Sale by,

ABRAM M. HESS ESTATE

A. W. Reese, Atty.

Howard Shaub Auctioneer and Roy C. Probst

PUBLIC SALE

FRANKLIN O. MEYERHOFFER, SR. ESTATE 10 A.M.

SATURDAY, APRIL 16, 1977

Earlys Mill Road, 1 mile East of Sand Beach Road, 1¼ miles West of Rt. 743, 3 miles NE of Hershey Airport.

REAL ESTATE

To be offered first as separate tracts of approx. 88A & 46A, then as 1 tract of 134A. 2½ story brickface over brick 7 room house with improvements. 35' x 60' bank barn with attached machinery shed. Great location—5½ miles from Penn National Racetrack. Approx. 5,100' of hard road frontage.

PERSONAL PROPERTY

Solid walnut corner cupboard & gate leg table, 6 rough walnut boards, M.S. Hershey plate, small safe, scale w/weights & brass scoop, Sessions mantel clock, butcher furnace, Hotpoint refrigerator w/top freezer, washer, dryer, dishwasher, Wizard 21 cu. ft. chest freezer, oak & other furniture, Remington 870 12 ga. pump gun, Remington 760 .30-06 rifle w/Leupold scope, Winchester .22 rifle, 1964 Ford 4 WD 8 cyl 8' bed pickup truck, 1965 Mercury 4 dr. sedan, riding mower, rototiller, propane operated noise-making device to frighten birds, upright wooden feed bin (3' x 3½' x 8'), Homelite chain saw, B&D 7¼" circ. saw, ¼" & ½" elec. drills, ½" bolt cutter, Hershey Coin Club medals (some silver), 1971 uncirculated silver dollar, Buffalo nickels, silver coins, & many other items.

Terms: Real estate, 10% down, bal. at settlement. Other items, cash.

Real estate at 1 P.M. Guns, truck, car, coins, bird cannon, feed bin at Noon.

FARMERS BANK & TRUST CO.

Of Hummelstown

Executor, 566-3206

Ralph Wenrich & Cal Hoover, Auctioneers

944-6260—545-3983

Food stand by Faith United Church of Christ

MRS. HARRY McCURDY PUBLIC SALE

SATURDAY, APRIL 23, 1977 9:30 A.M.

Located on the premises at route 2, Palmyra, South Londonderry Township. Turn South off route 322 in Campbelltown at the Valley Pools sign onto Lawn road and travel appx. 1 mile to premises.

FARM MACHINERY TOOLS ANTIQUES

John Deere Mt. tricycle tractor with 3 pt. hitch, John Deere side mounted mower for Mt; Wiard plow, manure spreader, 2 bottom 3 pt. Ferguson plow, barrel sprayer with boom, potato plow, 3 pt. cultivator, belt drive cement mixer, 3 pt. 4 row scorer, disc harrow, 3 pt. rotary mower, 2 wheel trailer, 4" grain auger, Sears 10" hammermill, Sears corn sheller, Mountville 2 hole corn sheller, MH 3 pt. corn planter, Non-pareil line spreader, 25' wooden grain elevator, peg harrow, Dearborn Woods Brothers 1 row corn picker, rubber tire trailer with model T chassis, tractor saw, roller harrow and Henderson front loader with fork bucket and dirt attachment with mountings for MT.

BUCKEYE 10' x 13' metal grain bin

Standard Twin garden tractor with sulky, potato plow and disc harrow, King-Wise walk behind garden tractor, 6 hp. and 7 hp. Wheel Horse tractors with mowers, small 4' disc harrow, rotary mower, lawn spreader, lawn roller, scythe, hand pruner, walking cultivator, rakes, forks, and shovels.

Apple Cider press and grinder

Marquette welder, ½" elect. drill press, belt drive bench grinders, elec. hack saw, F.E. Reed metal lathe, table saw, Mighty Mite Remington chain saw, acetylene outfit complete with gauges and tanks, B & D 3/8 drill, anvil, Weller solder gun, Craftsman comb. metal and wood lathe, ¼" to 2" pipe threader, metal stand, pipe wrenches, hammers, motors, tin shears, small barrel air compressor, saw horses, GT Corporation tap and die set, endless belt and lots of misc. hand tools and shop items.

Iron kettles, old wooden meat grinder, Belleville Amber stove, 2 drawer spool cabinet, Bywater wooden brace, kettle hanger, wooden barrels, barn hinges, bag cart, fish gigs, buggy shafts, wooden clamp, iron trough, scalding trough, 1 man saw, Enterprise meat grinder, glass butter churn, No. 35 sausage stuffer, cream separator, antique hand corn planter, apple butter stirrer, flax combs, meat fork and iron belt pulleys.

Appx. 300' ½" plastic pipe, chicken crates, platform scale, iron and wooden wheels, small paint sprayer, Model A transmission, 1917 and 1927 Chevrolet radiators, and lots of other items too numerous to be mentioned.

Conditions by,

MRS. HARRY McCURDY

Harry H. Bachman - Auctioneer

Lunch by Farm Women No. 3