

## Heritage Trail Home Tour to visit A touch of Williamsburg can be found in Lancaster Co.

By JOANNE SPAHR

Editor's note: For the third year, the Lancaster County Farmers' Association (associated with the Pennsylvania Farmers' Association) Women's Committee will sponsor their Heritage Trail Home Tour on April 20. Guests will tour five homes in the Manheim area which contain a legacy of Americana, farming history, and beauty. The following article deals with one of the homes to be visited. The other four homes will be featured in the upcoming weeks prior to Ladies Day Out.

**EAST PETERSBURG, Pa.** — At right angles to and hugging the porch of the oversized but gracious red brick farm house stands the diminutive colonial dwelling. It's as though a tornado stole the little green building right out of Williamsburg, Va., and planted it near the protective porch wings of the maternal farm house in Lancaster County for security. And, liking its surroundings, the house stayed and flourished where it landed.

The actual history, of course, is not nearly as romantic as this fictionalized version, but it may be equally as interesting.

The colonial house in question belongs to Mr. and Mrs. Earl Landis, Manheim R7, dairy farmers, who

recently restored it to its original state.

Built in the late 1700's, the home constructed for the purpose of housing retiring farm couples when "the younger generation" took over the family business. The last person to live in the home was Maria (pronounced Mar-eye-a) Bassler. She and her husband Jacob farmed the land until he died, and their son, Young Jacob, took over the business. When this happened, Maria retired to the "old house" as it was always called, and lived there until she passed away in 1878.

From that time on, the house was not lived in by humans except for a short span in the 1900's when the big brick house was being remodeled.

However, just because humans did not live in it does not mean that it was totally uninhabited for all those years. On the contrary, as the century of its dormancy slowly ticked away, many a brood of peeps and rabbits were reared in what is now the upstairs bedrooms.

And, during the T.B. testing period in 1938 to 1940, the dairy cows were tied in it when the testing was taking place on the farm.

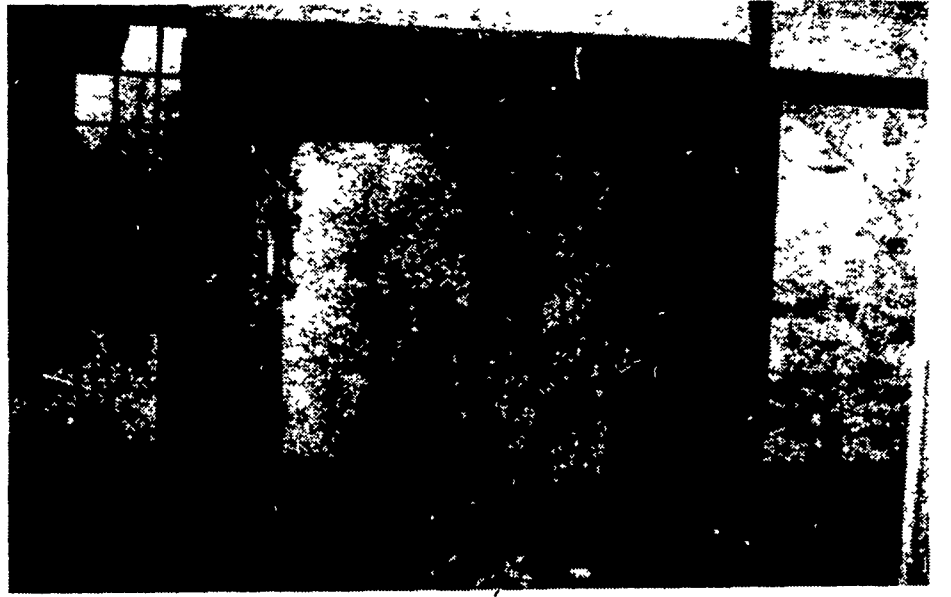
Also, through the years it has served as a playhouse, wood shop, storage room, and garage for the different owners using it.

Then, in 1975 Mr. and Mrs. Earl Landis bought the farm from his father and some changes began to take place.

"When we were sandblasting our home (the adjacent red brick structure, the sandblaster said that he would like to do the outside of the little house sometime," Mrs. Landis explains. Then, with a modest grin and a chuckle she adds, "At first I thought it was a joke, then Earl and I started thinking seriously about it, and we decided to do it."

Before the sandblaster ever came to do the outside of the stone dwelling, the Landis's had committed themselves in their minds to redo the entire building inside and out, a process that

(Continued on Page 50)



The above is the "before" picture of the fireplace in the Landis guest house.

**SUTAN + ATRAZINE** Lets Your Corn Grow Free From Weeds

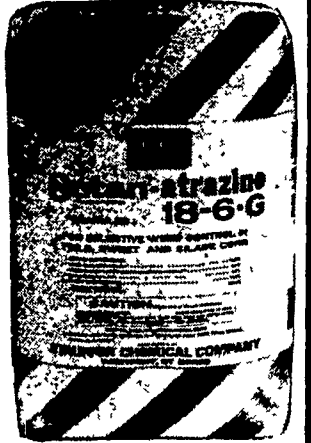
**DYFONATE** - For Root Worm Control

**FOR RENT** - GANDY Applicator or Sprayer for SUTAN + ATRAZINE Application

Liquid N. (Applicator Available)

**CONTACT**  
**JONAS S. EBERSOL**

1 1/2 Miles North of Bird in Hand on Stumptown Road.



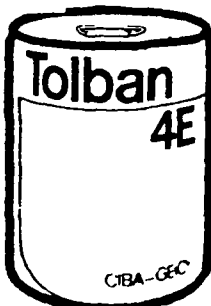
**In seedling alfalfa, would a first cutting of pure alfalfa be enough to make you change your ways?**

If so, we'd like you to know that now you can economically control most annual grasses and some broadleaf weeds with Tolban™

Let us tell you more about how Tolban can help you get a first cutting of pure alfalfa.

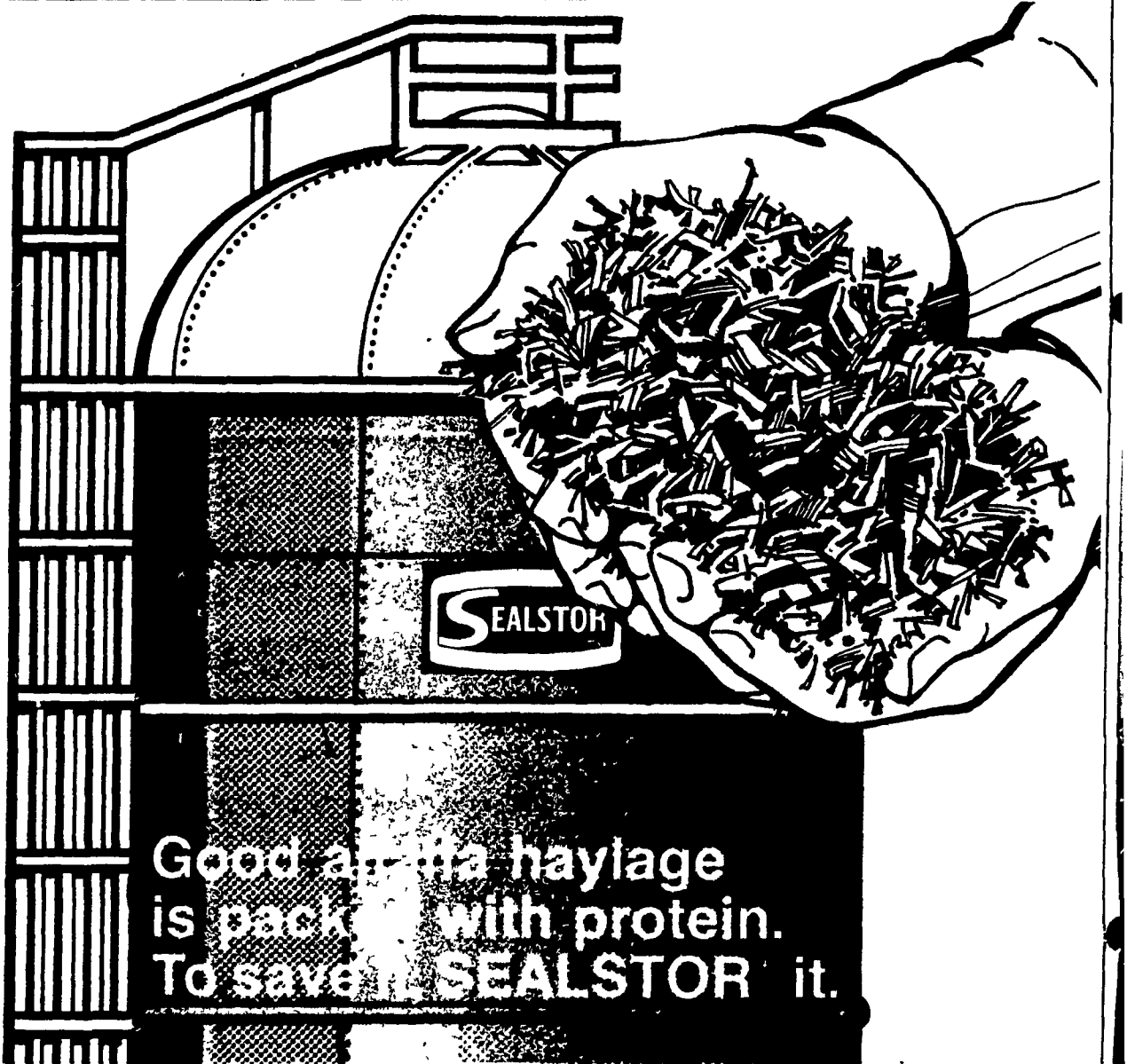
Tolban™ trademark of CIBA-GEIGY for profluralin

**CALL US FOR CUSTOM SPRAYING OR DIRECT SALES OF PESTICIDES**



**MARTIN'S  
LIQUID SERVICE**

**JOHN Z. MARTIN**  
RD 1 NEW HOLLAND, PA.  
phone 717-354-5848



When handled and stored properly, alfalfa is the most complete livestock ration you can grow. When alfalfa is baled, leaves shatter. Protein is lost. Nutrients disappear

With the Sealstor System you harvest alfalfa as medium-moisture haylage. There's less field loss, less storage loss, less labor, fewer weather worries. You can often windrow, chop and Sealstor haylage within 24 hours

Sealstored haylage is protected in a glass-steel, oxygen limiting structure. Nutrients are preserved. You get a mildly fermented, sweet-smelling, palatable ration. You get more tonnage, TDN and protein. You eliminate baling. You push a button to feed. Figure it out. To Sealstor alfalfa haylage, is to save time, labor and feed value.

Sealstor products are manufactured by Southwestern Porcelain Inc. P.O. Box 8 Sand Springs Oklahoma 74063



**FREE**

8-page full-color brochure explains the benefits of a Sealstor System

NAME \_\_\_\_\_  
ADDRESS \_\_\_\_\_  
TOWN \_\_\_\_\_ STATE \_\_\_\_\_ ZIP \_\_\_\_\_  
PHONE \_\_\_\_\_ CHECK IF STUDENT \_\_\_\_\_  
No of animals \_\_\_\_\_ Dairy \_\_\_\_\_  
Beef \_\_\_\_\_ Hogs \_\_\_\_\_ Acreage \_\_\_\_\_

Clip and mail the coupon to:

**PENN DUTCH FARM SYSTEMS INC.**

RD1 BOX 77 KINZER, PA MEL STOLTZFUS - PH: 717-768-3873

(Formerly Stoltzfus Silo Equipment)