

Livestock market and auction news

Lancaster Market

Monday March 28, 1977
Cattle Calves Hogs Sheep
Today 1401 125 1077 413
Last Monday 1223 101 557 110
Last Year 929 123 1047 230
Monday's Auction 1357 136 1082 442
Last Monday's Auction 1309 116 593 110

CATTLE: Compared to last Wednesday slaughter steers 25-75 lower; slaughter heifers steady to 50 lower; cows 50-1.00 lower, few Commercial yield grade 4 1.00-2.00 lower; bullocks steady to 50 lower, although few Choice fully steady; bulls 50-1.00 lower.

SLAUGHTER STEERS: High Choice and Prime 3-4 1150-1350 lb. 38.50-39.35; Choice and Prime 4-5 1250-1400 lb. 35.00-38.50; Choice mainly 2 1100-1375 lb. 38.75-39.50; Choice 2-4 1000-1350 lb. 37.25-38.85; high Good and low Choice 2-3 36.00-37.60; Good 2-3 34.00-36.50; Standard 1-2 32.00-34.50.

SLAUGHTER HEIFERS: Choice 2-3 850-1000 lb. 35.50-37.25; Good 2-3 32.00-35.00.

COWS: Utility and Commercial 1-3 29.50-31.25, few 31.35-31.50; Commercial yield grade 4 27.00-28.50; Cutter 1-2 27.25-29.50; Canner and low Cutter 25.50-27.50.

BULLOCKS: Choice 1000-1300 lb. 37.00-39.75, few 40.75-41.50; Good 1000-1250 lb. 32.00-37.75.

BULLS: Yield grade 1 1100-1800 lb. 33.60-36.50, few 36.50-38.10; yield grade 2 1000-1300 lb. 31.00-34.50.

VEAL CALVES: Vealers generally steady, although Standard and Good 85-110 lb. firm to 2.00 higher.

VEALERS: Choice 65.00-76.00; high Good and low Choice 54.00-64.00; Good 42.00-53.00; Standard and Good 85-115 lb. 30.00-39.00, few Standard 65-90 lb. 23.00-30.00.

SHEEP: Supply mainly 30-60 lb. spring lambs sold to the Easter trade. Few sales Choice 60-85 lb. spring lambs fully steady.

SPRING LAMBS: Supply

Vintage Market

Tuesday, March 29, 1977
Cattle Calves Sheep Goats
Today 1110 535 255 24
LAST TUESDAY 911 544 15
LAST YEAR 888 519 41

CATTLE: Compared to last Tuesday slaughter steers 1.00-1.50 lower; slaughter heifers steady, instances 50 lower on Good; cows 1.00 lower, instances 1.50 lower; bullocks steady; bulls weak to 1.00 lower. Supply included 58 per cent slaughter steers and 26 per cent cows.

SLAUGHTER STEERS: High Choice and Prime 3-4 1175-1400 lb. 38.35-38.75; Choice mainly 2 1000-1325 lb. 38.50-39.00, few 39.25-40.00; Choice 2-4 1000-1425 lb. 37.00-38.50, few 950-1025 lb. 36.50-37.25; high Good and low Choice 2-3 34.50-37.50; Good 2-3 33.50-36.50; Standard 1-2 30.00-34.00.

SLAUGHTER HEIFERS: Choice 2-3 875-1200 lb. 35.00-37.50; Good 2-3 775-1000 lb. 30.00-34.50.

COWS: Utility and Commercial 1-3 28.00-30.50, few 30.50-31.50; Cutter 1-2 27.00-28.75; Canner and low Cutter 24.00-26.60.

BULLOCKS: Good 975-1250 lb. 33.50-35.75, couple Choice 37.00-38.25.

BULLS: Yield grade 1 1100-1700 lb. 35.50-36.50; yield grade 2 1000-1250 lb. 30.75-33.50.

VEAL CALVES: Vealers mostly steady. Supply included 318 in graded sale of which 32 per cent sold to return to farm.

VEALERS: Choice 63.00-72.00, couple 72.00-76.00; high Good and low Choice 52.00-62.00; Good 38.00-48.00; Standard and Good 85-110 lb. 28.00-36.00, few Standard 60-85 lb. 21.50-29.00.

RETURNED TO FARM: 20 head Standard and Good 120-125 lb. Holstein bulls 50.00-52.50, 85 head 100-115 lb. 45.50-47.00.

mainly 30-60 lb. 88.00-91.50, one lot 33 lb. 95.00, 55-85 lb. 60.00-71.50; Good 55-85 lb. 55.00-62.00.

Lancaster Auction

Wednesday, March 30, 1977
Cattle Calves Hogs Sheep
Today 758 73 550 159
Last Wednesday 962 49 748 43
Last Year 794 76 965 20

Wednesday's Auction
816 73 601 294
Last Wednesday's Auction
978 48 726 43

CATTLE: Compared Monday slaughter steers weak to 50 lower with late trading mostly 50 lower, instances 75 lower; slaughter heifers fully steady; cows uneven, Utility and Commercial 1.00-2.00 lower, Canner and Cutter weak to 50 lower; bullocks steady to 50 lower; few sales yield grade 1 bulls steady.

SLAUGHTER STEERS: High Choice and Prime 3-4 1075-1250 lb. 37.75-38.25; Choice mainly 2 1075-1325 lb. 38.25-39.00, few 39.00-39.50; Choice 2-4 1000-1350 lb. 37.00-38.10, few late sales 36.75-37.25; high Good and low Choice 2-3 36.00-37.50; Good 2-3 34.00-37.00; Standard 1-2 31.00-33.50.

SLAUGHTER HEIFERS: Choice 2-3 850-1100 lb. 35.75-37.50, one lot 780 lb. 32.00; Good 2-3 750-1000 lb. 31.00-35.75.

COWS: Utility and Commercial 1-3 27.00-29.00, couple 29.00-30.10; Cutter 1-2 26.75-28.00.

BULLOCKS: Choice 1000-1300 lb. 35.25-37.50, few 38.85-40.00; Good 1000-1200 lb. 31.50-35.75.

BULLS: Yield Grade 1 1100-1600 lb. 34.60-36.75, three head 1885-2065 lb. 35.35-36.75.

VEAL CALVES: Vealers mostly steady.

VEALERS: Choice 65.00-

SHEEP: Supply mainly 25-60 lb. spring lambs sold to the Easter trade.

SPRING LAMBS: Choice 25-35 lb. 88.00-100.00, few 102.50-110.00; Choice 40-50 lb. 79.00-95.00, 55-75 lb. 65.00-80.00; few Good 35-55 lb. 68.00-80.00.

GOATS: Supply sold by the head mainly 19.00-28.00, few head 31.00-36.00.

New Holland

Thursday, March 24, 1977
Cattle Calves Sheep
Today 821 486 522
Last Thursday 1077 507 71
Last Year 1078 488 35

CATTLE: 821. Compared to last Thursday slaughter steers 1.00 lower, instances 1.25 lower; cows weak to 1.00 lower; bullocks 1-1.50 lower; bulls steady. Supply included 44 per cent slaughter steers, 36 per cent cows and 12 per cent bulls.

SLAUGHTER STEERS: High Choice and Prime 3-4 1100-1350 lb. 38.00-39.00; Choice mainly 2 1000-1300 lb. 38.00-38.75, few head 38.75-39.25; Choice 2-4 975-1350 lb. 36.50-38.25, load 1375-1425 lb. 36.25-37.85; high Good and low Choice 2-3 34-75-37.50; Good 2-3 33.00-36.00, few Standard 1-2 30.00-32.50.

SLAUGHTER HEIFERS: Good 2-3 680-975 lb. 30.00-34.25, few head Choice 35.50-36.35.

COWS: Utility and Commercial 1-3 27.50-29.00, few 29.00-29.75, couple 30.25-31.25; Cutter 1-2 26.00-28.00; Canner and low Cutter 23.00-25.50.

BULLOCKS: Choice 1000-1300 lb. 34.50-36.75, couple 37.25-38.50; Good 975-1200 lb. 31.00-34.75.

BULLS: Yield grade 1 1100-1700 lb. 34.25-36.50; yield grade 2 1000-1300 lb. 30.00-34.00.

VEAL CALVES: 486. Vealers 1-2.00 lower; instances 6.00 lower on Standard and Good 70-95 lb. 74.00; high Good and low Choice 54.00-60.00; Good 43.00-53.00; Standard and Good 90-110 lb. 30.00-38.00, few Standard 70-90 lb. 25.00-32.00.

RETURNED TO FARM: Few Good to low Choice 90-110 lb. Holstein bulls 40.00-45.00.

SHEEP: Supply mainly 30-70 lb. spring lambs sold to Easter trade.

SPRING LAMBS: Choice 30-50 lb. 88.00-96.00, 12 head 25-40 lb. 103.00-116.00, 50-75 lb. 65.00-75.00.

SLAUGHTER EWES: Utility and Good 16.00-19.00.

Lancaster Weekly

Friday April 1
Cattle Calves
This Week 4900 1300
Last Week 4907 1275
Last Year 4390 1273

CATTLE: Slaughter steers 1.00 to 1.50 lower; slaughter heifers steady, instances 50 lower; cows weak to 1.00 lower, instances 2.00 lower; bullocks steady to 1.00 lower; bulls 50 to 1.00 lower. Supply included 56 per cent slaughter steers, 15 per cent cows, 6 per cent bulls, 6 per cent heifers with the balance feeder steers.

VEALERS: Choice 62.00-76.00, few Prime 74.00-80.00, three head 81.50-84.00; high Good and low Choice 49.00-62.00; Good 33.00-45.00; Standard and Good 90-110 lb. 22.00-30.00, few Standard 70-90 lb. 18.00-23.00.

SHEEP: 522. Supply mainly 20-65 lb. spring lambs sold to Easter Trade. Slaughter ewes weak to 2.00 lower.

SPRING LAMBS: Choice 20-35 lb. 95.00-115.00, around 70 head 10-35 lb. 120.00-130.00; Choice 35-50 lb. 80.00-100.00, 50-65 lb. 69.00-80.00, few early sales 62.00-70.00; Choice 70-85 lb. 61.00-64.00.

SLAUGHTER STEERS: High Choice and Prime 1075-1350 lb. 37.50-38.50, early part of week Choice and Prime 1400 lb. 35.00-38.50, mainly 2 1000-1300 lb. 39.00, few head 39.50-40.00; Choice 2-4 1000-1350 lb. 38.50, few 36.50-37.50; Good and Low Choice 36.00-37.50; Good 2 36.50; Standard 1 34.00.

SLAUGHTER HEIFERS: Choice 2-3 850-1100 lb. 37.50, 1 lot 780 lb. 32.00; 2-3 750-1000 lb. 30.00.

COWS: Utility Commercial 1-3 27.00-28.50, few mainly early week 29.50-31.50; Canner 26.00-28.50; Canner Cutter 23.00-26.50.

BULLOCKS: Choice 1000-1300 lb. 35.00-38.50, 38.50-40.00 with couple 40.75-41.50; Good 1000-1300 lb. 31.00-35.00.

BULLS: Low grade 1800 lb. 33.75-36.75; 36.75-38.10; yield grade 1 1000-1300 lb. 30.00-34.00.

VEAL CALVES: weak to 2.00 lower, 6.00 lower on Standard and Good at the close.

B & R CATTLE CO.

Washington Boro, PA
17582
Office Phone
(717) 872-5491

Specializing in
Stockers & Feeders

John Bowman
Ph: (717) 653-5728

Ron Ranck
Ph: (717) 656-9849

LEBANON VALLEY LIVESTOCK MARKET

1 mile East
Fredericksburg
along Route 101

PHONE JONES
865-2881

Sale every Tuesday
P.M. starting with feed
and pigs.

HAY, STRAW AND EAR CORN SALES

Every Wednesday at 12 Noon

HARVEY Z. MARTIN

North Maple Ave., Leola, PA
Home Phone 215-445-5383

We Buy On Orders.
Bus. Phone Wed. Only
717-656-7270

At David Good's Farm Equipment Sales
Leola, PA

We also buy hay and straw privately.

NEW HOLLAND The Action Auction

AUCTIONS make the difference in
marketing livestock!

NEW HOLLAND makes the difference
in auctions!

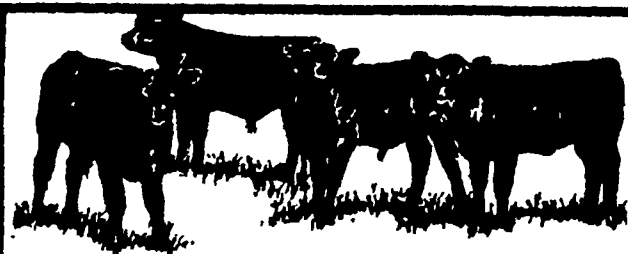
MONDAY'S ACTION:
8:00 A.M. - Fat Hogs
10:00 A.M. - Horse Sale
11:00 A.M. - Hay, Straw & Ear Corn
1:30 P.M. - Fat Steers, Bulls, Cows & Veal

WEDNESDAY'S ACTION:
12:00 Noon - Hay Straw & Ear Corn
12:30 P.M. - Dairy Sale
1:00 P.M. - Feeder Pig Sale

THURSDAY'S ACTION:
11:00 A.M. - Beef Sale
Order of Sale - Bulls, Fat Steers, Cows, Veal
6:30 P.M. - Calf Sale

NEW HOLLAND SALES STABLES INC.

New Holland, PA
Abram W. Dittenbach, Manager Phone: 717-356-1111



LANCASTER STOCKYARDS WEEKLY SALES

Slaughter Sales - Mon. & Wed. 11:00 A.M.
Vealers, Lambs, Hogs - Mon. & Wed. 11:00 A.M.
Stocker & Feeder Sale - Friday 12 Noon
Hogs Sold Sat. - Private Treaty 7-12 Noon
NO SALE GOOD FRIDAY, APRIL 8

Notice

Easter Spring Lamb Sale Monday, April 4

Equipped To Receive Your Livestock
24 Hours A Day, 365 Days A Year.

PRIVATE TREATY DAILY

LANCASTER STOCKYARDS, INC.
(717) 394-2611



VINTAGE SALES STABLES, INC.

BULLS, STEERS,
BUTCHER COWS,
LAMBS AND VEAL CALVES
SOLD ON COMMISSION

SALE EVERY TUESDAY 11 A.M.

HOG SALES
WEEKLY - WED. & SAT. 9 A.M.

STATE GRADED FEEDER PIG SALE -
1ST & 3RD THURSDAY, 1:00 P.M.

(\$1.00 a head Commission)

EVERY THURSDAY - 12:00 P.M.

HAY & STRAW SALE

Get calves in early for grading & weighing. No
weight loss.

FOR MARKETING INFORMATION
PHONE AREA CODE 717-768-8204

Home Phone 215-458-5060

L. Robert Frame, Manager

Box 100

Paradise PA

10 miles East of Lancaster on Rt 30