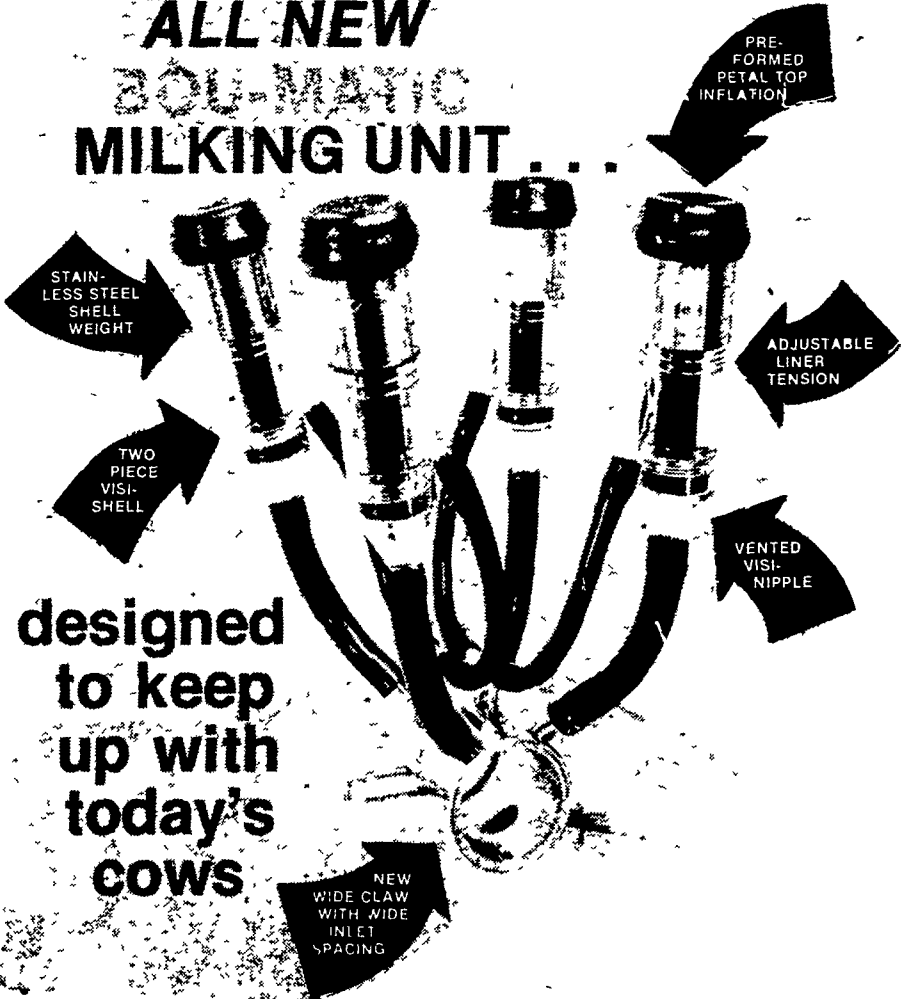


ALL NEW BOU-MATIC MILKING UNIT



designed to keep up with today's COWS

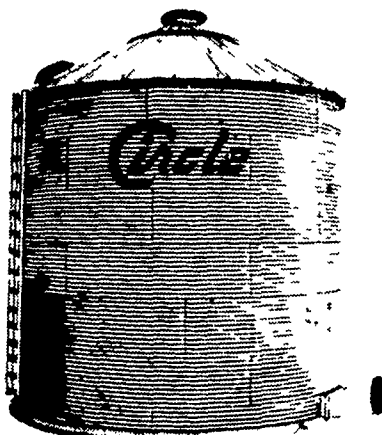
GREATER CAPACITY, WIDER REACH AND THE MILKING PERFORMANCE OF STRETCH-BORE LINERS. DESIGNED TO DO A BETTER JOB OF MILKING TODAY'S HIGH-PRODUCTION, WIDE-UDDER COWS.

GRAIN DRYING EQUIPMENT



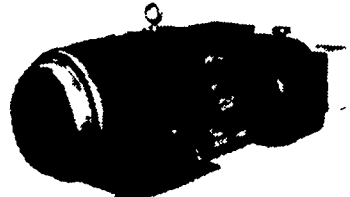
GT Batch Recirculating & New Continuous Flow

Make Plans Now for Next Seasons Grain-Handling Equipment Bins - Augers - Dryers, etc.



Circle Grain Bins Feed Bins

Get Prepared With Standby Power



WINCO GENERATORS

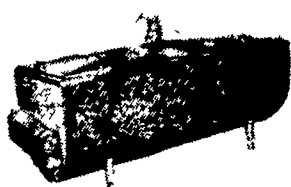
PTO - Sizes 15 KW to 65 KW
Portable Units 1000 Watts to 7300 Watts
Stationary Units 25 KW to 100 KW

USED MILK TANKS

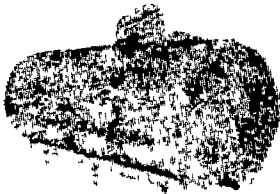
- 1 - 1000 Gal. Girton
- 1 - 600 Gal. Mojonmier
- 1 - 600 Gal. Steinhorst
- 1 - D2 - 500 Gal. Girton
- 1 - 400 Gal. Mojonmier
- 1 - D2 - 400 Gal. Girton
- 1 - D2 - 300 Gal. Girton
- 2 - 400 Gal. Jamesway
- 1 - 500 Gal. Jamesway

Above Tanks in nice clean condition

Several Used 4-Can Can Coolers To install with milk tanks Use as refrigeration for most anything



MILKKEEPER
500 Gal., 600 Gal.
In Stock Ready For Immediate Installation



MODEL DKE
400 Gal. thru 5000 Gal. Capacity

SHENK'S FARM SERVICE OFFERS



ON-THE-FARM DELIVERY SERVICE TO OUR BOU-MATIC MILKING EQUIPMENT CUSTOMERS WITH BOU-MATIC MILKER PARTS AND MILKING EQUIPMENT CLEANING SUPPLIES.

FOR ADDITIONAL INFORMATION. CALL 717-626-1151

SALES—INSTALLATION—SERVICE

SHENK'S FARM SERVICE

501 E. Woods Drive Lititz, PA 17543 Phone 717-626-1151

New Tripoli Area - Phone (215) 767-7611 Quakertown Area - Phone (215) 536-1935
Bulk tanks & Therma - Stor After 5 P.M. Call Titus Burkholder 717-859-1620 24 HR. SERVICE OFFERED
Our Service Trucks Are Radio Dispatched



George Heath, left, Patz district manager for Maryland, Delaware and parts of Pennsylvania, receives the Super Manager Award from Paul Patz, president of the company.

Patz manager cited

GREEN BAY, Wis.—his 1975 sales by more than 10 per cent, the Super Company district manager, was one of a handful of district managers that walked away with an armful of honors at the Patz Annual Sales Meeting held here recently. Heath is district manager for Maryland, Delaware and part of Pennsylvania and supervises the selling activities of 27 Patz dealers.



2008 HORSESHOE RD.
2436 CREEKHILL RD.

LANCASTER, PA. 17601

FOR THE BEST DOLLAR VALUE IN FARM SILAGE STORAGE —

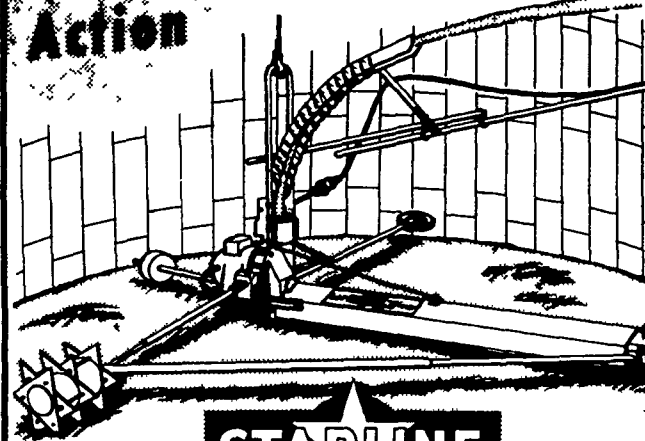
BUY THE

CONCRETE STAVE SILO

FROM LANCASTER SILO CO.

SILO UNLOADER

Fast Action



STARLINE

Boosts your silage output . . . 50% OR MORE!

Contact Us For Early Delivery Quotations

Larry Hiestand
Office 299-3721
Home 273-7394

Ken Groff
Sales - 299-3722
Home - 687-6668

MAIL MORE DETAILS

- Please send silo information and price [size]
- Please send silo unloader or feeding equipment details

NAME _____

ADDRESS _____

ZIP CODE _____

PHONE: _____